

# NATIONAL PATIENT AND PROCEDURE VOLUME TRACKER<sup>TM</sup>

Version 8.03.2020



## National Patient and Procedure Volume Tracker™

Biweekly update Aug 3, 2020

Overall volumes are continuing to grow in Northeast and Midwest regions. Inpatient admissions are higher than 2019 in the South. Admission volumes are only marginally negative in the other regions revealing a rebound. Outpatient visits are growing in all census regions except in the West. Emergency visits are still significantly down versus 2019 as people are likely seeking other channels of support or avoiding care.

Likely due to the holiday all service lines are down over the last two weeks of reported data (data as of July 4th). More broadly, we are seeing medical service lines (eg cancer and certain cardiology areas) and preventative care and screenings rebounding to near 2019 levels. We will look for confirmation in later July data to be published in Mid August. We continue to see elective procedural areas and those related to traumas continuing to track well below 2019.

Self pay has been stable but continues to be well above normal in all regions.

The data science team at Strata aggregated data from a cohort of 257 hospitals in 56 healthcare delivery systems. The breakdown of hospitals by U.S. Census Region is below.

Census Region				
Midwest	Northeast	South	West	Grand Total
104	36	83	34	257

## Section 1

## Admission Stays and Visits Recent Volume Changes

Data as of July 25, 2020

	30 Day Change Compare to 2019	14 Day Change Compare to 2019
DailyInpatientAdmissions	▼ -2.2%	▼ -3.6%
DailyObservationVisits	▼ -9.4%	▼ -10.0%
DailyEmergencyVisits	▼ -14.5%	▼ -15.1%
DailyOutpatientVisits	▲ 23.6%	▲ 23.8%

	Change in Last 30 Days	Change in Last 14 Days
DailyInpatientAdmissions	▲ 1.1%	▼ -1.0%
DailyObservationVisits	▲ 4.7%	▲ 0.9%
DailyEmergencyVisits	▲ 9.9%	▼ -1.6%
DailyOutpatientVisits	▲ 0.1%	▲ 1.5%

Census Region	Metric	30 Day Change Compared to Same Period 2019	14 Day Change Compared to Same Period 2019
Midwest	DailyInpatientAdmissions	▼ -3.8%	▼ -3.4%
	DailyObservationVisits	▲ 3.0%	▲ 2.2%
	DailyEmergencyVisits	▼ -15.2%	▼ -14.3%
	DailyOutpatientVisits	▲ 28.2%	▲ 29.7%
Northeast	DailyInpatientAdmissions	▼ -6.6%	▼ -5.9%
	DailyObservationVisits	▼ -10.2%	▼ -9.8%
	DailyEmergencyVisits	▼ -18.2%	▼ -17.2%
	DailyOutpatientVisits	▲ 27.1%	▲ 30.6%
South	DailyInpatientAdmissions	▲ 8.7%	▲ 5.7%
	DailyObservationVisits	▼ -13.4%	▼ -15.8%
	DailyEmergencyVisits	▼ -14.6%	▼ -16.5%
	DailyOutpatientVisits	▲ 12.4%	▲ 11.1%
West	DailyInpatientAdmissions	▼ -7.3%	▼ -10.9%
	DailyObservationVisits	▼ -16.9%	▼ -16.4%
	DailyEmergencyVisits	▼ -10.1%	▼ -12.4%
	DailyOutpatientVisits	▲ 27.0%	▲ 23.8%

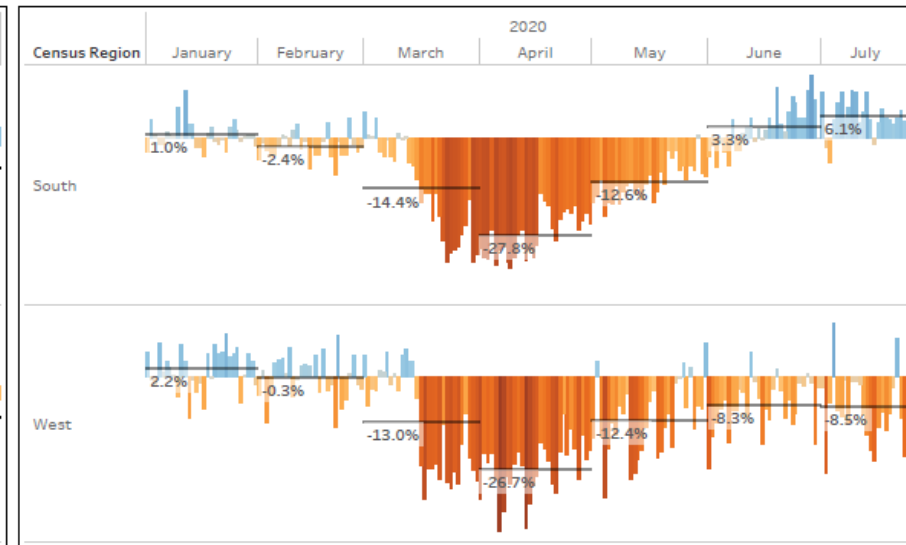
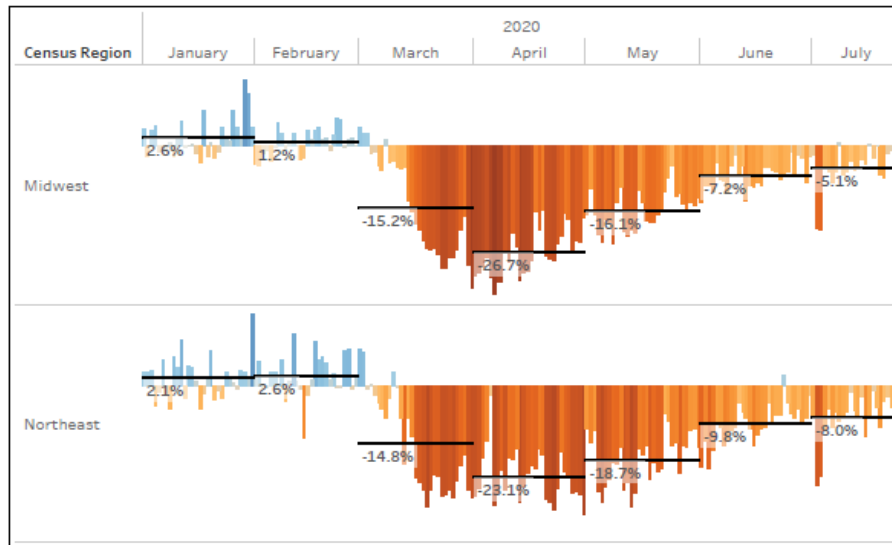
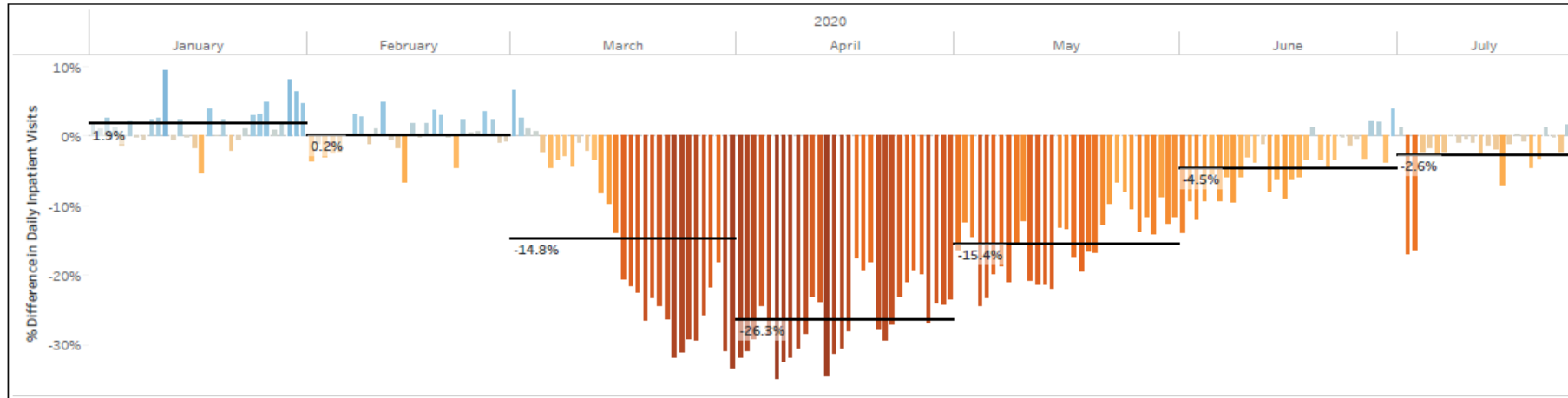
Census Region	Metric	Change in Last 30 Days	Change in Last 14 Days
Midwest	DailyInpatientAdmissions	▲ 0.5%	▲ 2.5%
	DailyObservationVisits	▲ 4.6%	▲ 2.6%
	DailyEmergencyVisits	▲ 8.5%	▲ 0.6%
	DailyOutpatientVisits	▲ 3.2%	▲ 0.2%
Northeast	DailyInpatientAdmissions	▲ 2.5%	▲ 2.6%
	DailyObservationVisits	▲ 15.8%	▲ 3.3%
	DailyEmergencyVisits	▲ 14.1%	▲ 1.5%
	DailyOutpatientVisits	▲ 3.9%	▲ 7.9%
South	DailyInpatientAdmissions	▲ 4.4%	▼ -3.3%
	DailyObservationVisits	▼ -2.2%	▼ -3.8%
	DailyEmergencyVisits	▲ 8.5%	▼ -4.7%
	DailyOutpatientVisits	▼ -4.0%	▲ 2.1%
West	DailyInpatientAdmissions	▼ -2.9%	▼ -5.9%
	DailyObservationVisits	▲ 0.6%	▲ 1.6%
	DailyEmergencyVisits	▲ 8.5%	▼ -3.8%
	DailyOutpatientVisits	▼ -2.8%	▼ -4.2%



## Section 2

## Inpatient Admissions Daily Percent Change Compared to 2019

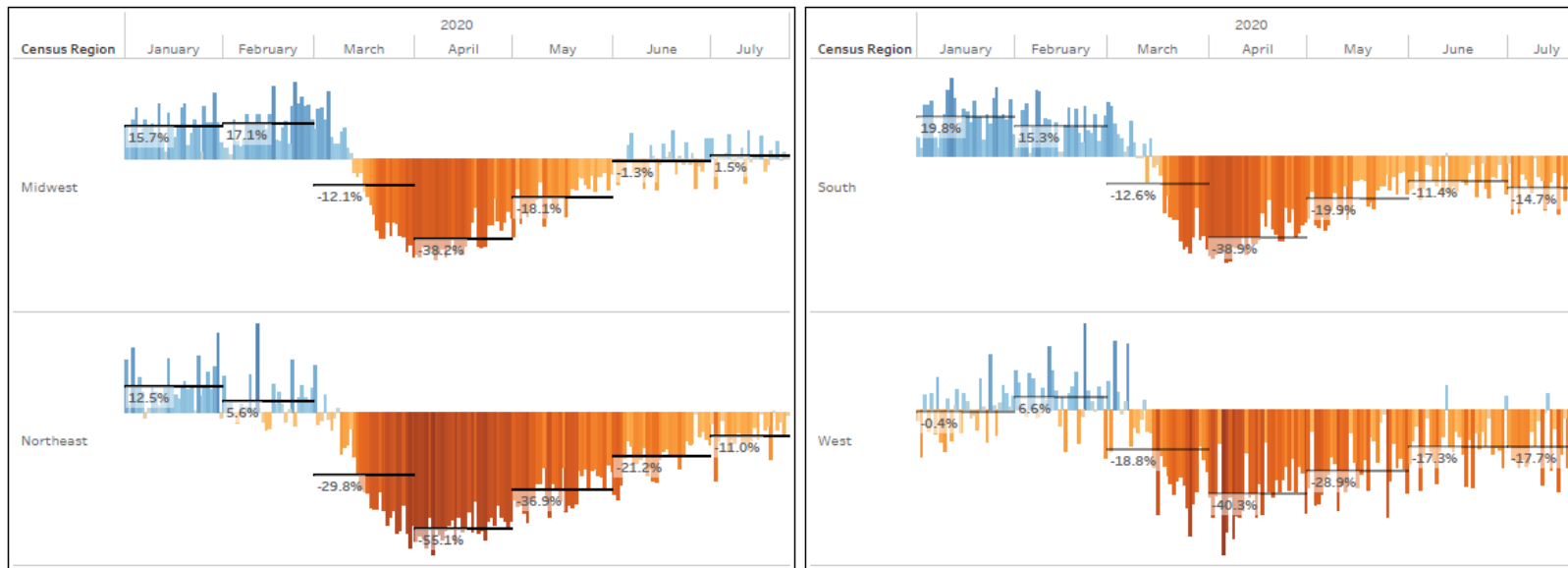
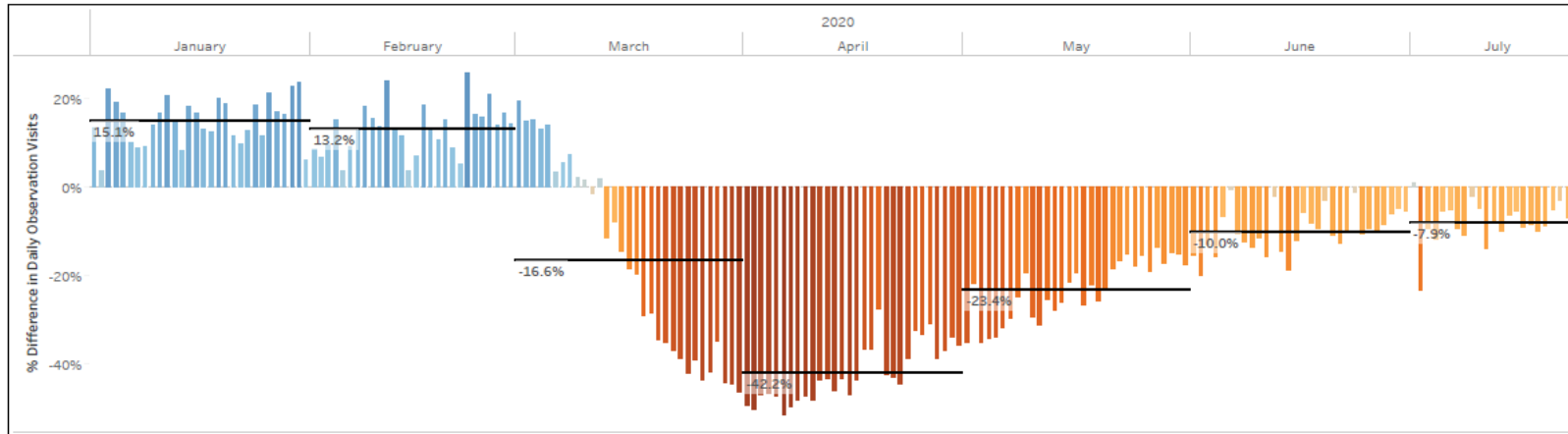
Data as of July 25, 2020



## Section 3

## Observation Visits Daily Percent Change Compared to 2019

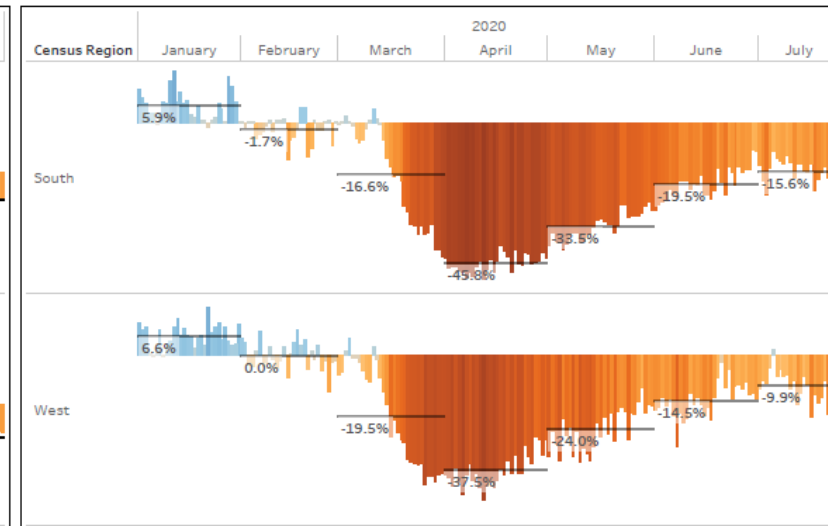
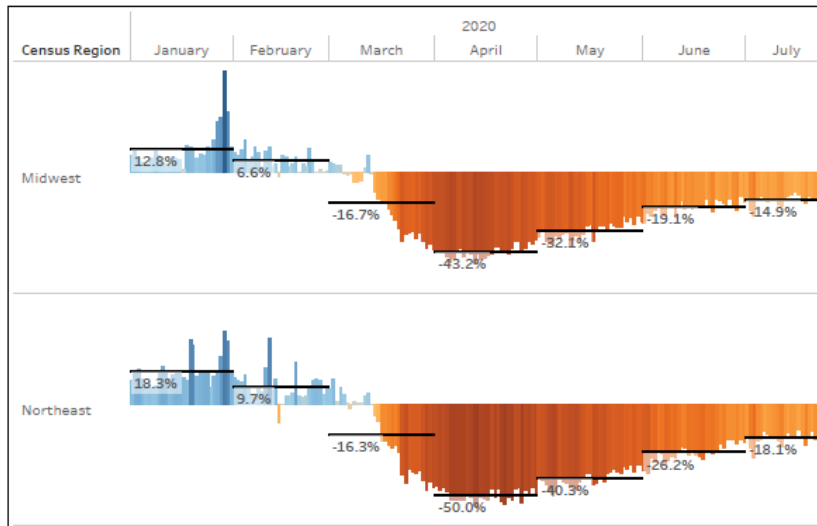
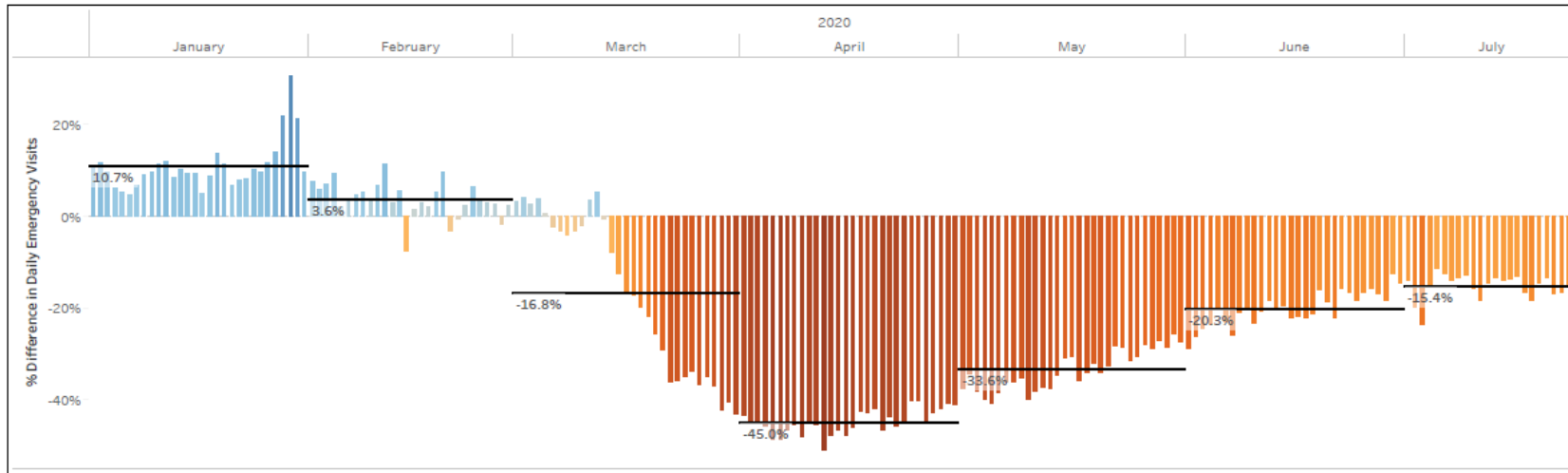
Data as of July 25, 2020



## Section 4

## Emergency Visits Daily Percent Change Compared to 2019

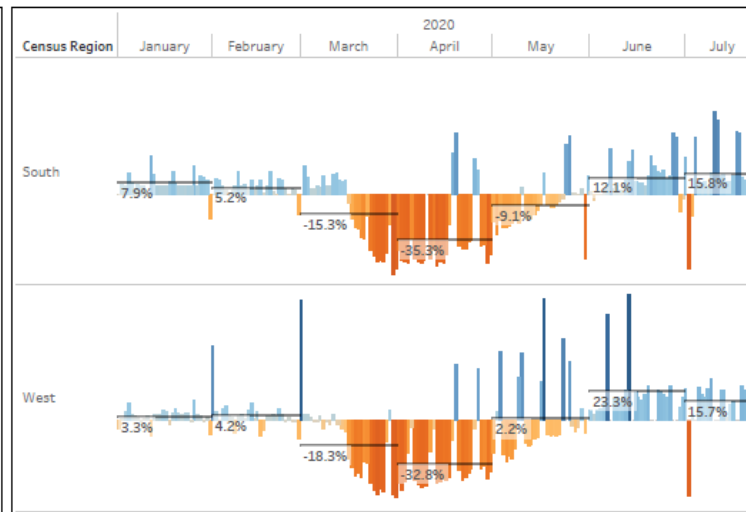
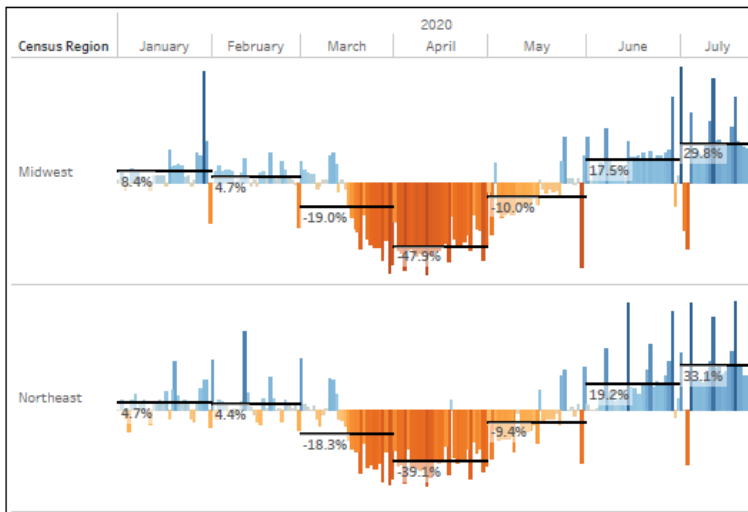
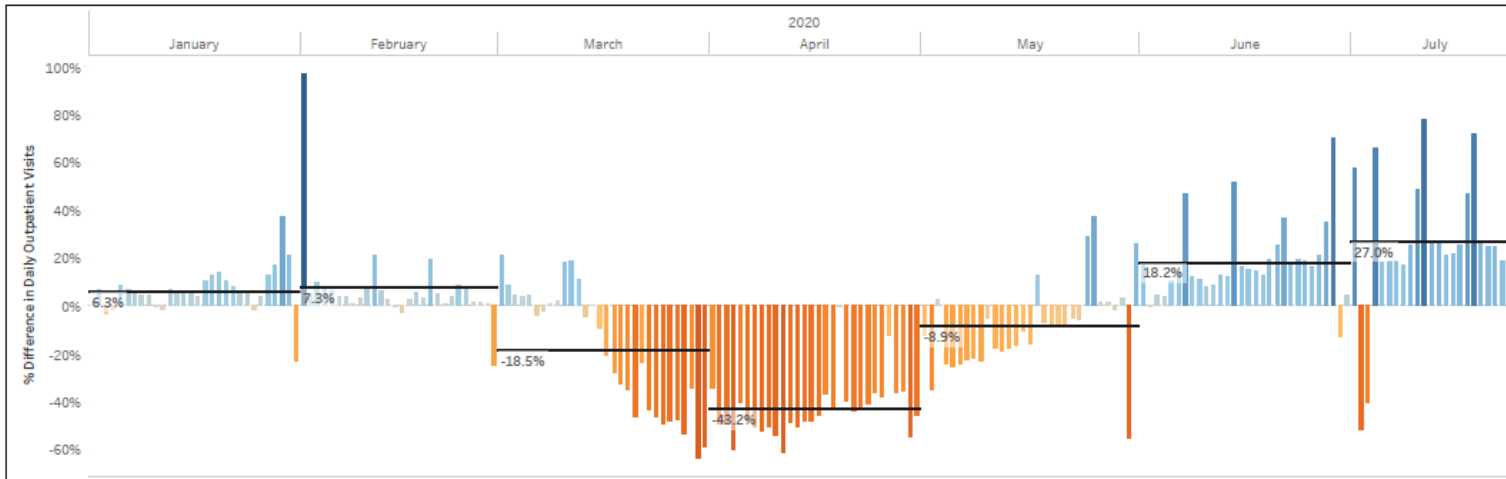
Data as of July 25, 2020



## Section 5

## Outpatient Visits Daily Percent Change Compared to 2019

Data as of July 25, 2020



## Section 6

## Sg2 Service Line Percent Change Last 14 Days

 Data Compares Service Line Volume Changes for the weeks of 6/7  
 -6/20/2020 to the weeks of 6/21 - 7/4/2020

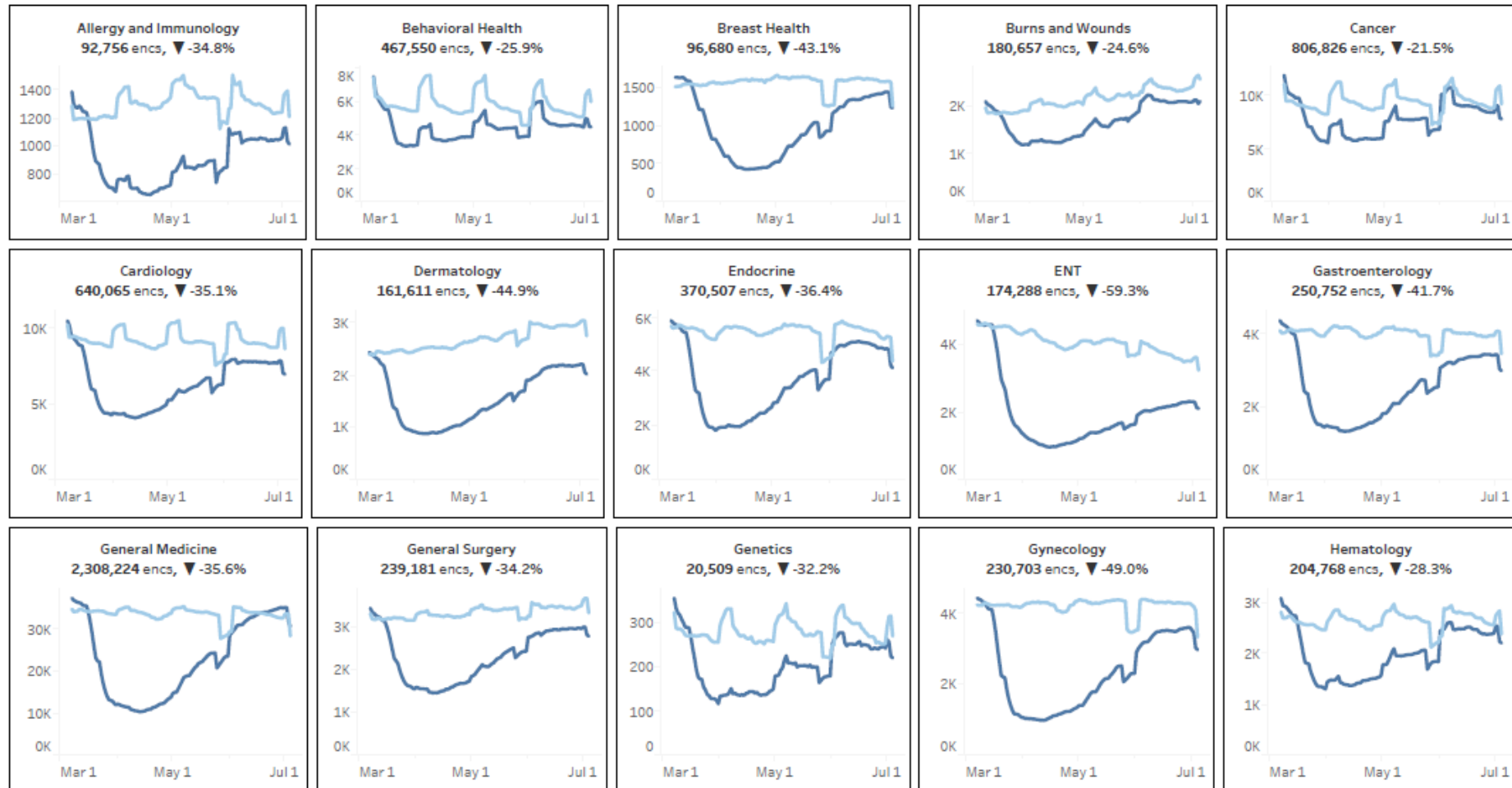
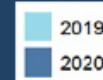
Allergy and Immunology	▼ -3.3%	Hepatology	▼ -11.6%
Behavioral Health	▼ -1.8%	Infectious Disease	▲ 3.6%
Breast Health	▼ -12.9%	Neonatology	▼ -2.2%
Burns and Wounds	▲ 0.3%	Nephrology	▼ -7.0%
Cancer	▼ -7.4%	Neurosciences	▼ -8.8%
Cardiology	▼ -9.7%	Normal Newborn	▼ -5.3%
Dermatology	▼ -7.3%	Obstetrics	▼ -7.3%
Endocrine	▼ -15.2%	Ophthalmology	▼ -17.1%
ENT	▼ -7.8%	Orthopedics	▼ -9.6%
Gastroenterology	▼ -12.9%	Pulmonology	▼ -12.5%
General Medicine	▼ -12.0%	Rheumatology	▼ -10.6%
General Surgery	▼ -5.9%	Spine	▼ -12.1%
Genetics	▼ -9.5%	Urology	▼ -10.0%
Gynecology	▼ -16.9%	Vascular	▼ -9.8%
Hematology	▼ -7.2%		

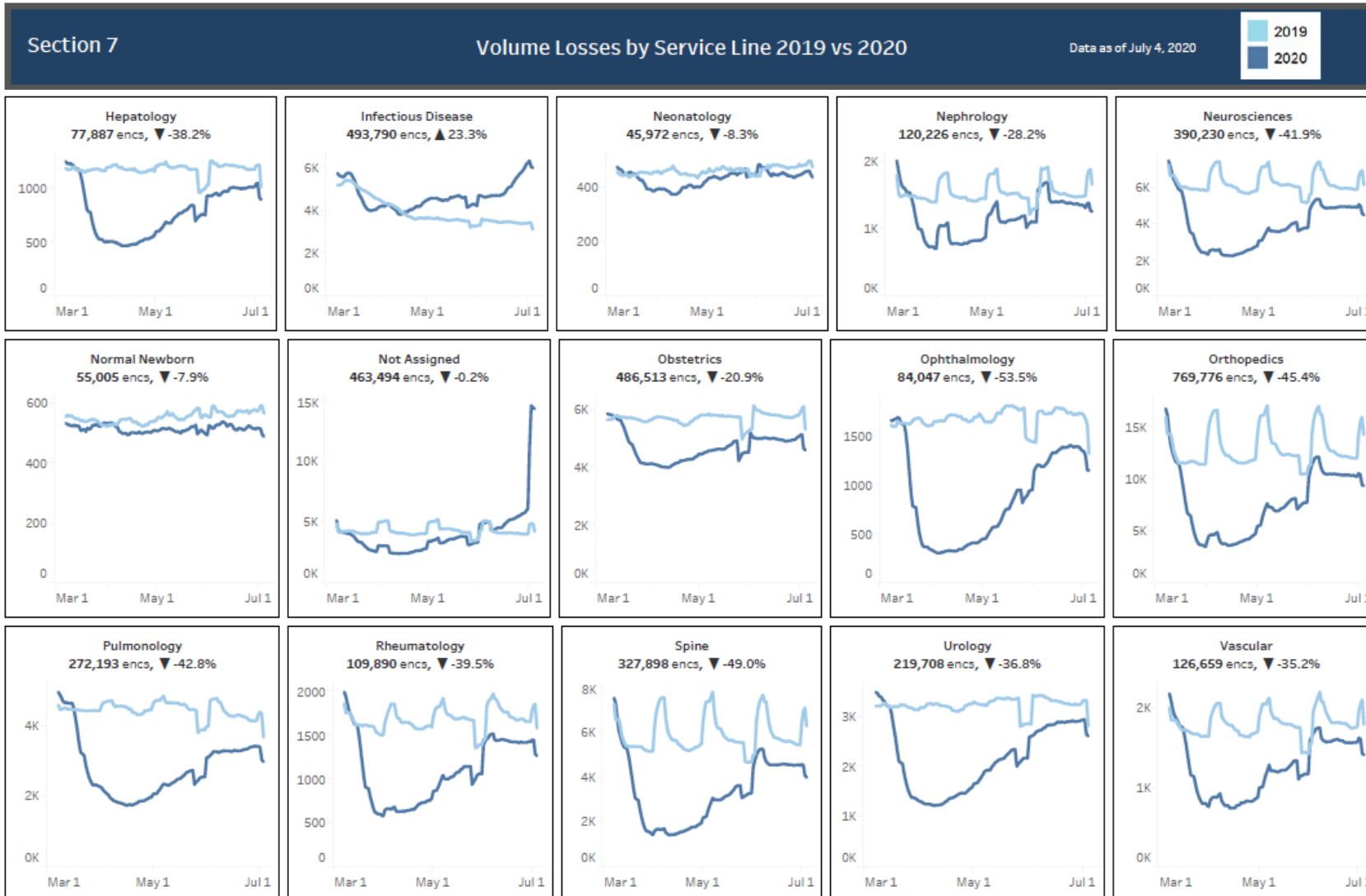


## Section 7

## Volume Losses by Service Line 2019 vs 2020

Data as of July 4, 2020

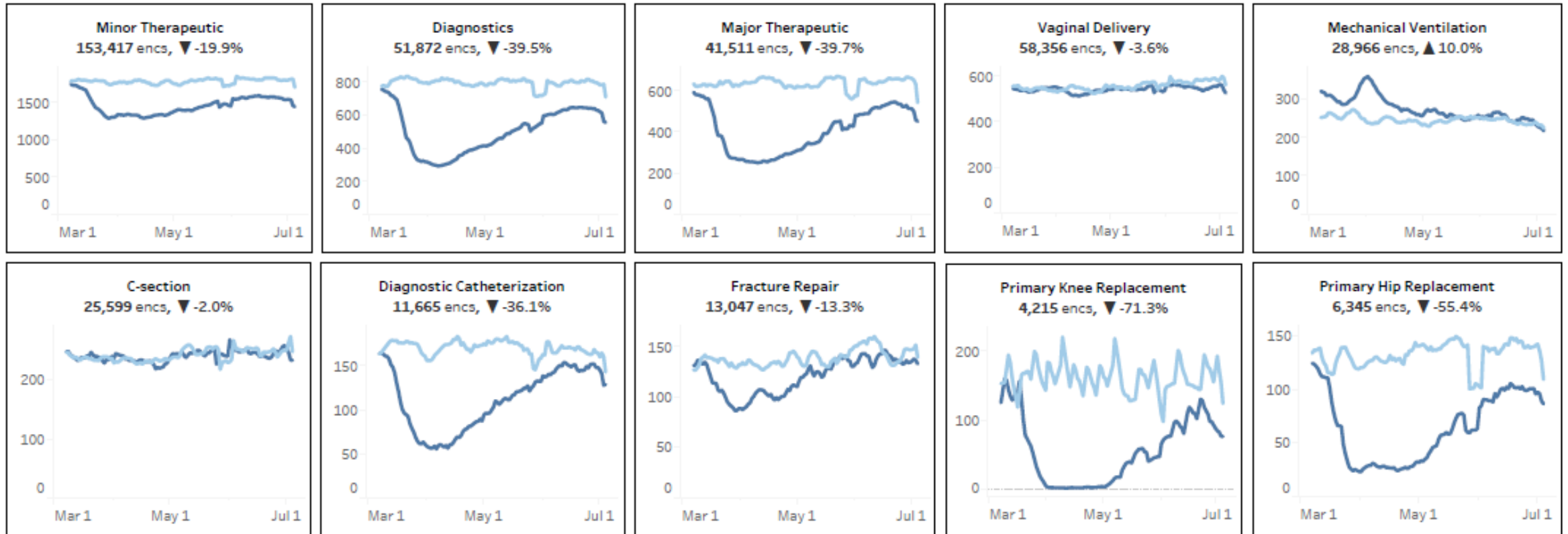
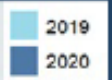




## Section 8

## Impact to Inpatient Procedures and Surgeries

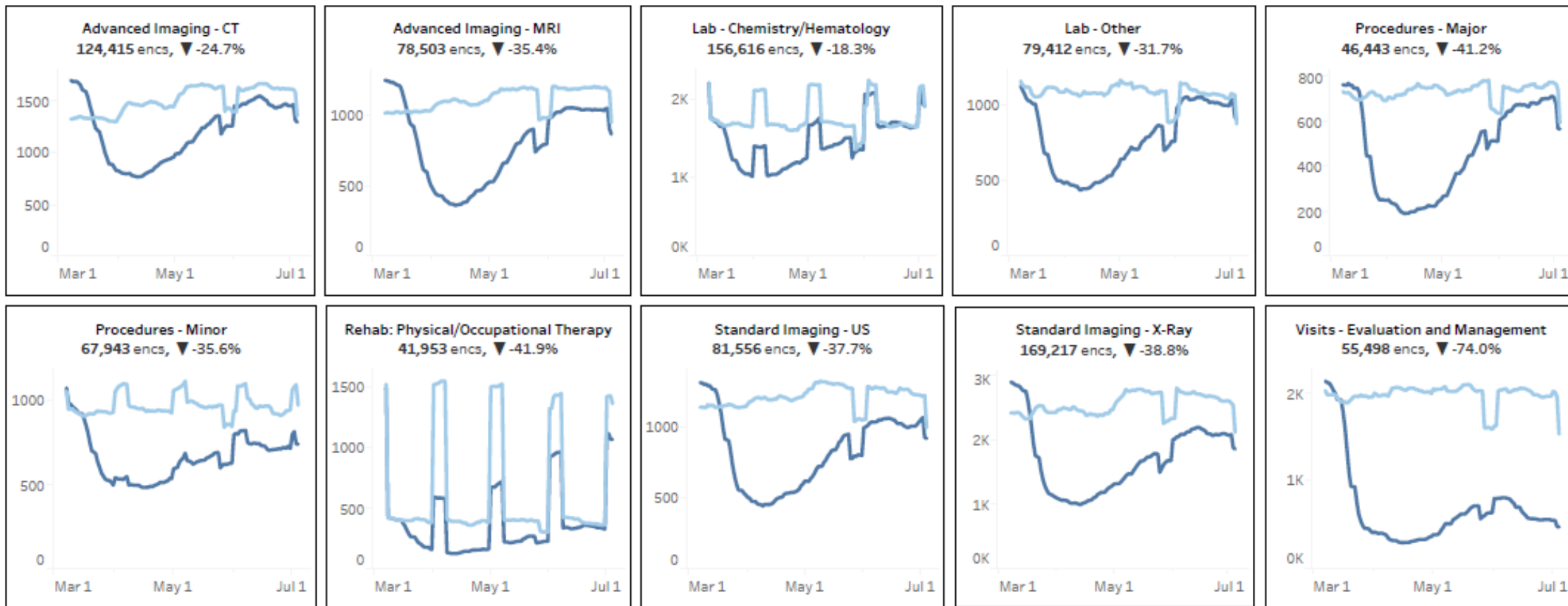
Data as of July 4, 2020



## Section 9

## Impact to Hospital Outpatient Visits

Data as of July 4, 2020

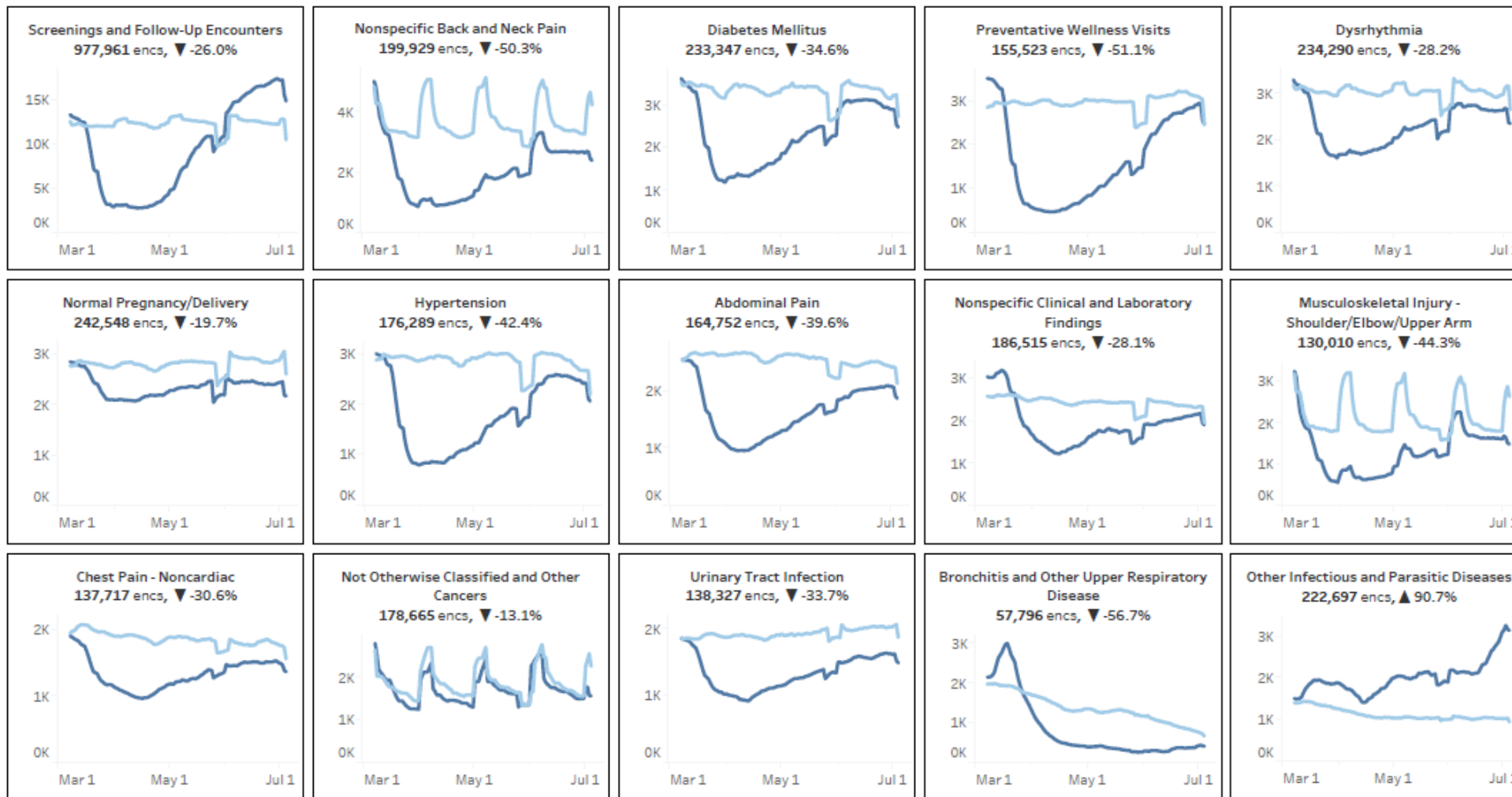




## Section 10

## Impact to Top 15 Hospital Visits by Care Family

Data as of July 4, 2020



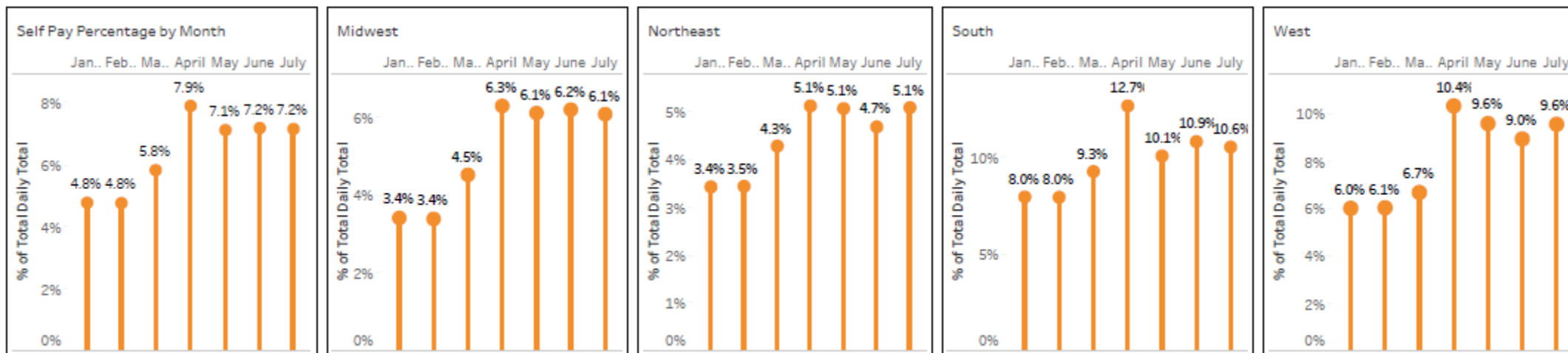
## Section 11

## Increase in Self Pay and Uninsured

Data as of July 25, 2020

The study found that the number of uninsured or self-pay patients has increased mirroring the rise in the national unemployment rate.

Nightly updates are received for encounter information. As providers validate or obtain insurance for patients it is added to the data set. Self Pay is still increased, however we expect self pay data for the most recent month to decrease from initially reported numbers as more insurance is found.



**Data Source:** 56 StrataSphere health systems with decision support and valid costed encounter data available for both 2019 and 2020. Strata reviewed a total of 10 million encounters for matching timeframes in 2019 and 2020. All hospital billing encounters with nonzero charges were pulled.

**Analysis of volumes and payer source of admissions, observation stays, emergency room and hospital outpatient visits trends 2020 compared to 2019.**

•Timeframe: January 1, 2020 to July 25, 2020.

**Data Processing Considerations:**

•Self Pay: The hospital billing encounter's primary insurance plan and financial class were analyzed to identify patients that did not have insurance.

**Analysis of impact of COVID-19 on volumes and revenue by clinical service line and sub service lines**

•Timeframe:

•Baseline: Admit dates between March 20 and July 4, 2019.

•COVID era: Admit dates between March 20 and July 4, 2020.

•The COVID era timeline was chosen to reflect the first full weeks of widespread closures and shelter-in-place orders. The end date was chosen to ensure sufficient time for patient discharge and diagnosis coding to take place. The time frame will be expanded as time passes.

•Data Processing: All encounters were run through the [2020 Sq2 Care Grouper™](#) to obtain service lines and CARE families.

**Methodology and Output**

For all columns, data was aggregated by either service line or CARE family, and the metrics were calculated using the aggregate values.

The columns in the output were calculated as follows:

•Baseline encounters: Total number of encounters in the 2019 time frame.

•COVID-era encounters: Total number of encounters in the 2020 time frame.

•Volume loss: Baseline encounters minus COVID-era encounters.

•Percent volume loss: Volume loss divided by baseline encounters.