

National Patient and Procedure Volume Tracker™

Biweekly update November 2, 2020

At first glance, this week's report would suggest more of the new normal but there are some underlying trends that give us concern about what we will see the rest of the year.

Outpatient volumes (Sections 1 and 5) are back above 2019, however, the past 14 days has shown considerable weakness across regions.

Admissions are still modestly below 2019 levels but all volumes are weakening. The exception to this slight weakening is Infectious Disease which is surging across the country due to COVID-19 (Section 10). Our concern is whether or not this surge starts to crowd out the recovery in chronic, cancer and other essential care. (Note service line data includes outpatient and inpatient hospital services). We will continue to monitor this with future reports.

The data science team at Strata aggregated data from a cohort of 295 hospitals in 59 healthcare delivery systems. The breakdown of hospitals by U.S. Census Region is below.

Census Region				
Midwest	Northeast	South	West	Grand Total
124	35	101	35	295

Section 1 Admission Stays and Visits Recent Volume Changes

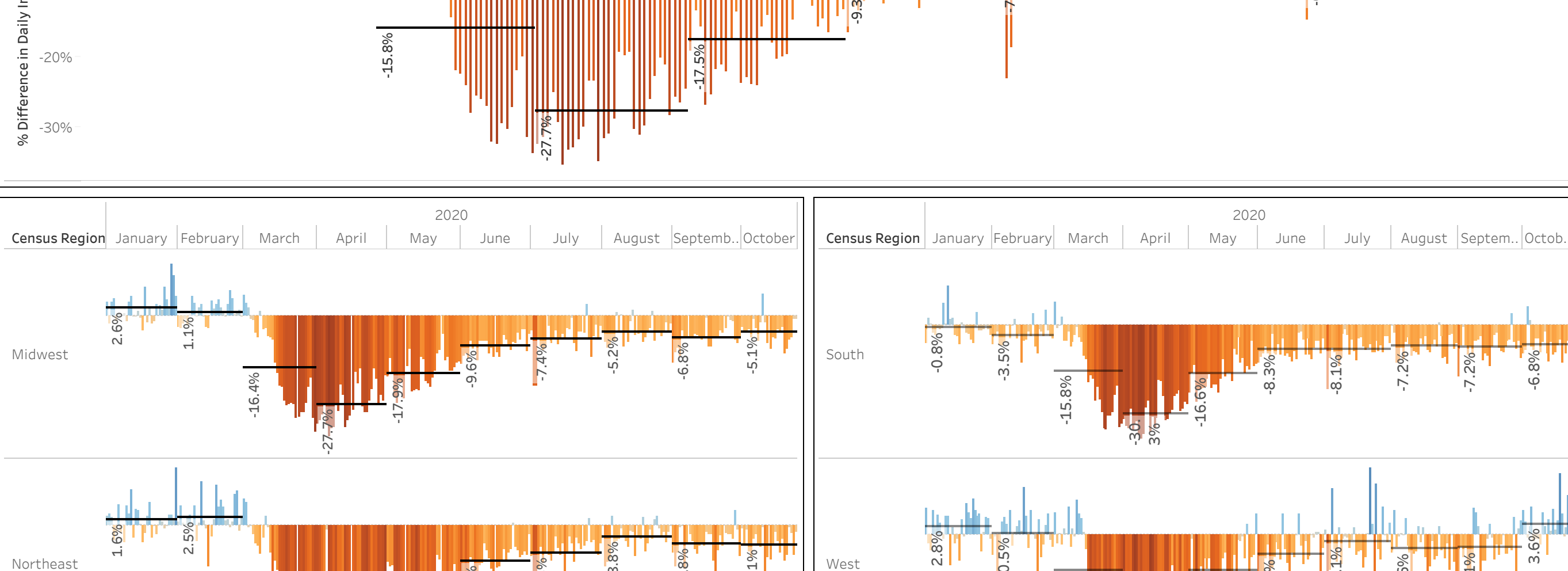
Data as of October 24, 2020

		30 Day Change Compare to 2019	14 Day Change Compare to 2019		
Daily	InpatientAdmissions	▼-3.7%	▼-4.0%	Daily	InpatientAdmissions
	ObservationVisits	▼-11.4%	▼-11.4%		ObservationVisits
	EmergencyVisits	▼-18.8%	▼-18.7%		EmergencyVisits
	OutpatientVisits	▲4.1%	▲4.4%		OutpatientVisits
		Change in Last 30 Days	Change in Last 14 Days		
Daily	InpatientAdmissions	▼-1.0%	▼-0.9%	Daily	InpatientAdmissions
	ObservationVisits	▼-0.5%	▼-2.8%		ObservationVisits
	EmergencyVisits	▼-1.1%	▼-2.4%		EmergencyVisits
	OutpatientVisits	▼-2.2%	▼-6.4%		OutpatientVisits

Census Region	Metric	30 Day Change Compare to 2019	14 Day Change Compare to 2019	Census Region	Metric	Change in Last 30 Days	Change in Last 14 Days
Midwest	DailyInpatientAdmissions	▼-4.3%	▼-5.1%	Midwest	DailyInpatientAdmissions	▼-2.2%	▼-1.2%
	DailyObservationVisits	▲3.1%	▲3.5%		DailyObservationVisits	▼-0.7%	▲1.4%
	DailyEmergencyVisits	▼-18.7%	▼-19.0%		DailyEmergencyVisits	▼-3.6%	▼-3.0%
	DailyOutpatientVisits	▲4.3%	▲4.8%		DailyOutpatientVisits	▼-4.1%	▼-6.7%
Northeast	DailyInpatientAdmissions	▼-5.5%	▼-6.8%	Northeast	DailyInpatientAdmissions	▼-0.6%	▼-1.8%
	DailyObservationVisits	▼-15.4%	▼-18.5%		DailyObservationVisits	▼-2.2%	▼-7.3%
	DailyEmergencyVisits	▼-24.4%	▼-24.8%		DailyEmergencyVisits	▼-0.2%	▼-3.5%
	DailyOutpatientVisits	▲4.7%	▲4.5%		DailyOutpatientVisits	▲0.3%	▼-5.8%
South	DailyInpatientAdmissions	▼-7.0%	▼-8.3%	South	DailyInpatientAdmissions	▼-3.9%	▼-2.8%
	DailyObservationVisits	▼-15.3%	▼-13.9%		DailyObservationVisits	▼-2.4%	▼-1.4%
	DailyEmergencyVisits	▼-20.6%	▼-18.9%		DailyEmergencyVisits	▼-2.3%	▼-2.0%
	DailyOutpatientVisits	▼-2.2%	▼-2.1%		DailyOutpatientVisits	▼-4.6%	▼-6.2%
West	DailyInpatientAdmissions	▲1.8%	▲4.0%	West	DailyInpatientAdmissions	▲2.7%	▲2.8%
	DailyObservationVisits	▼-17.7%	▼-16.7%		DailyObservationVisits	▲3.5%	▼-3.1%
	DailyEmergencyVisits	▼-11.6%	▼-12.2%		DailyEmergencyVisits	▲0.9%	▼-1.2%
	DailyOutpatientVisits	▲9.4%	▲10.5%		DailyOutpatientVisits	▼-0.3%	▼-5.9%

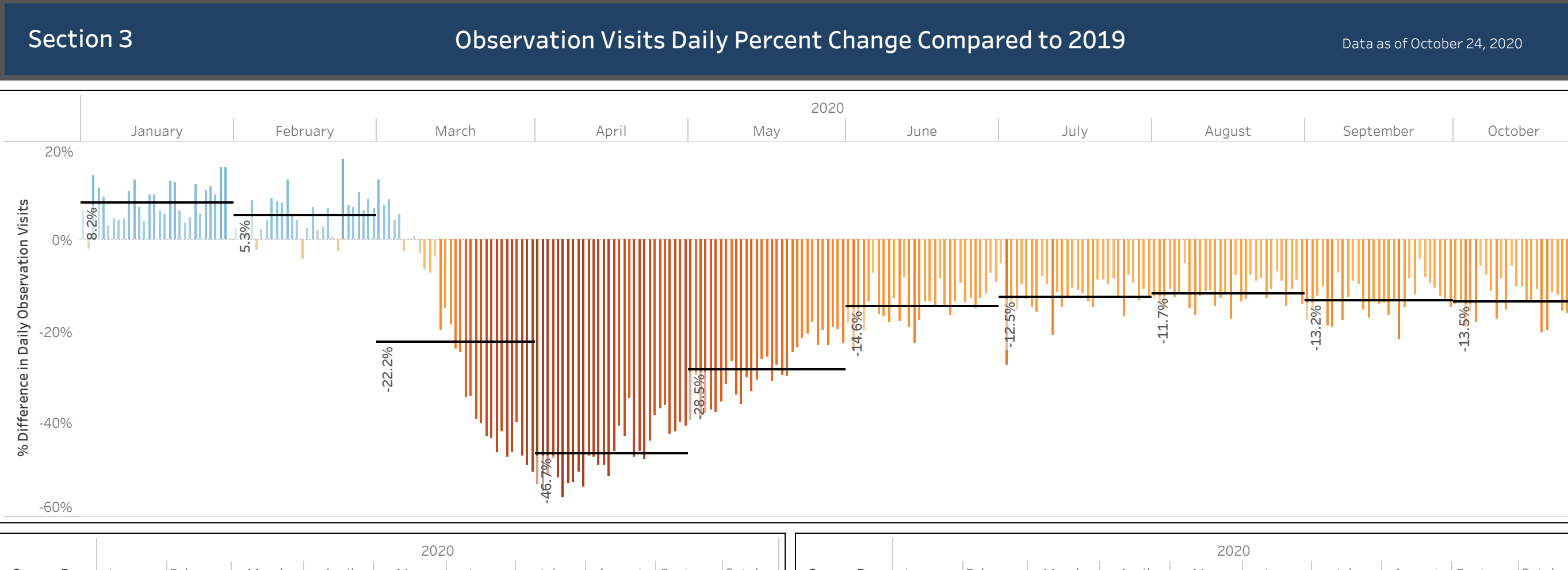
Section 2 Inpatient Admissions Daily Percent Change Compared to 2019

Data as of October 24, 2020



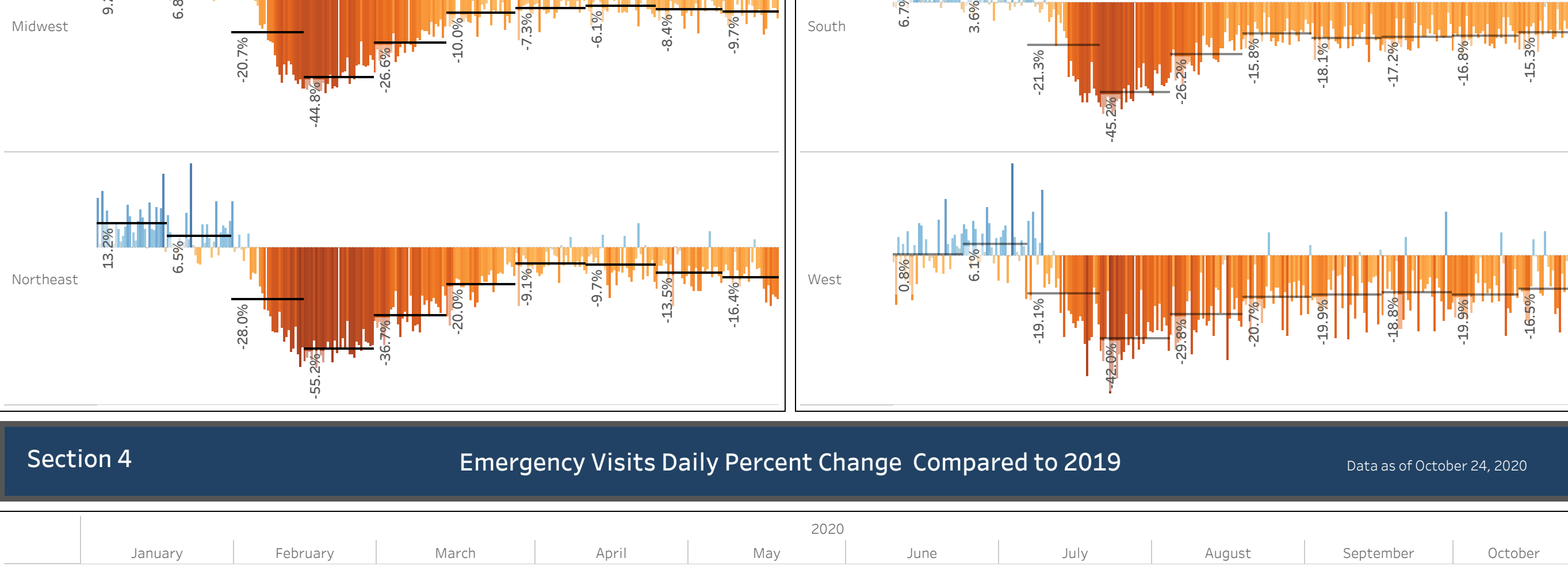
Section 3 Observation Visits Daily Percent Change Compared to 2019

Data as of October 24, 2020



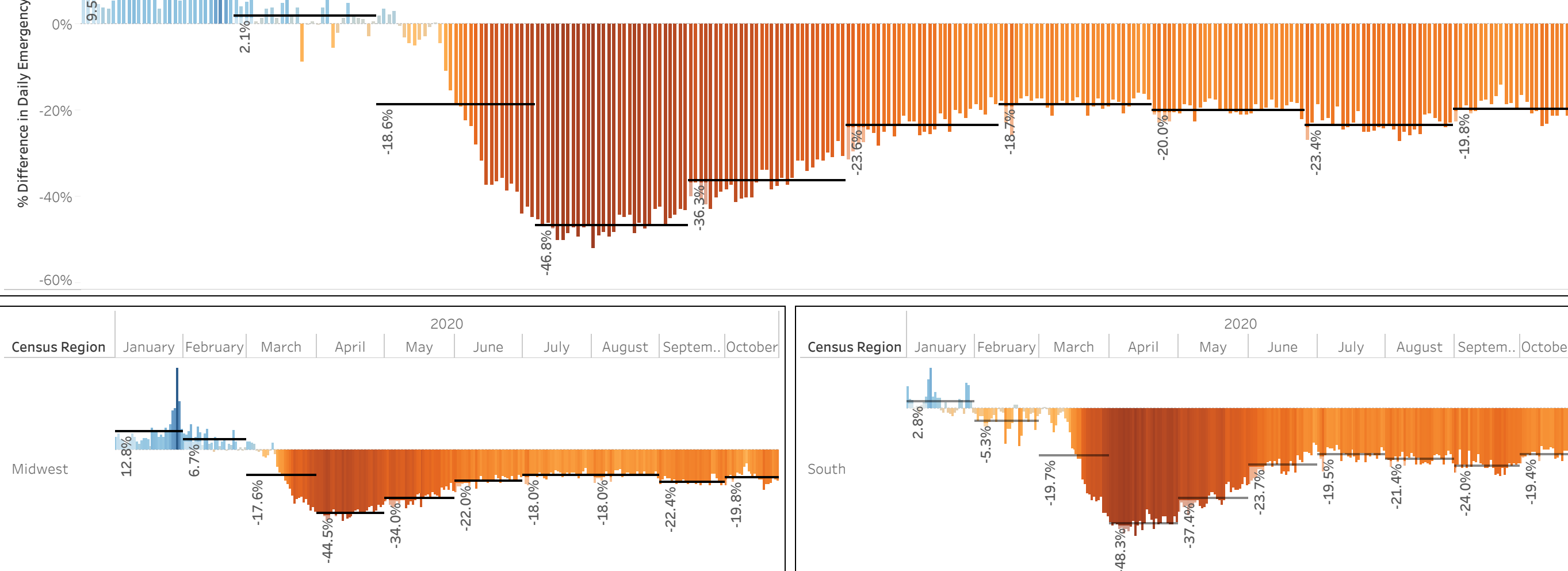
Section 4 Emergency Visits Daily Percent Change Compared to 2019

Data as of October 24, 2020



Section 5 Outpatient Visits Daily Percent Change Compared to 2019

Data as of October 24, 2020



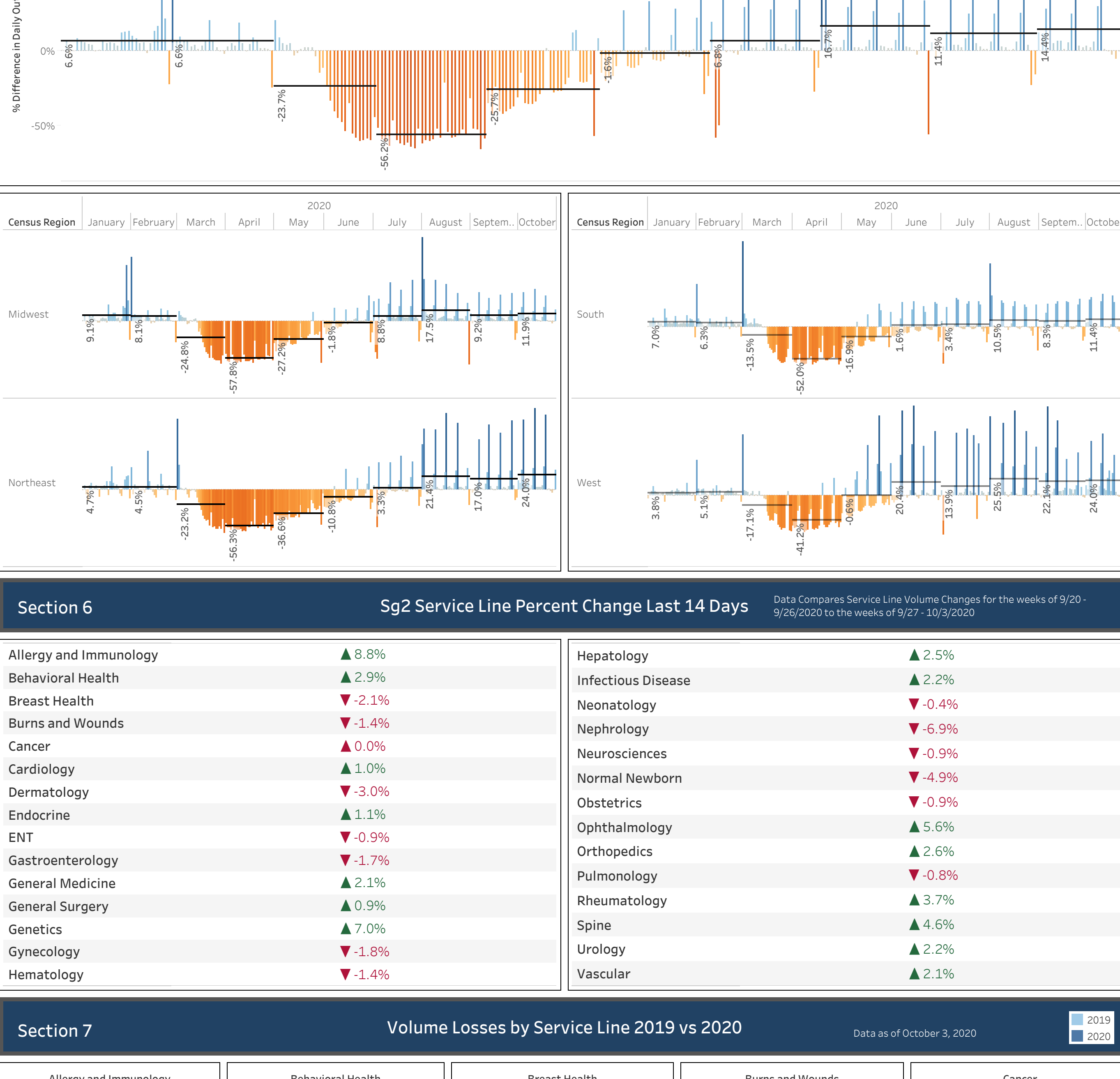
Section 6 Sg2 Service Line Percent Change Last 14 Days

Data Compares Service Line Volume Changes for the weeks of 9/20-9/26/2020 to the weeks of 9/27-10/3/2020

Allergy and Immunology	▲8.8%	Hepatology	▲2.5%
Behavioral Health	▲2.9%	Infectious Disease	▲2.2%
Breast Health	▼-2.1%	Neonatology	▼-0.4%
Burns and Wounds	▼-1.4%	Nephrology	▼-6.9%
Cancer	▲0.0%	Neurosciences	▼-0.9%
Cardiology	▲1.0%	Normal Newborn	▼-4.9%
Dermatology	▼-3.0%	Obstetrics	▼-0.9%
Endocrine	▲1.1%	Ophthalmology	▲5.6%
ENT	▼-0.9%	Orthopedics	▲2.6%
Gastroenterology	▼-1.7%	Pulmonology	▼-0.8%
General Medicine	▲2.1%	Rheumatology	▲3.7%
General Surgery	▲0.9%	Spine	▲4.6%
Genetics	▲7.0%	Urology	▲2.2%
Gynecology	▼-1.8%	Vascular	▲2.1%
Hematology	▼-1.4%		

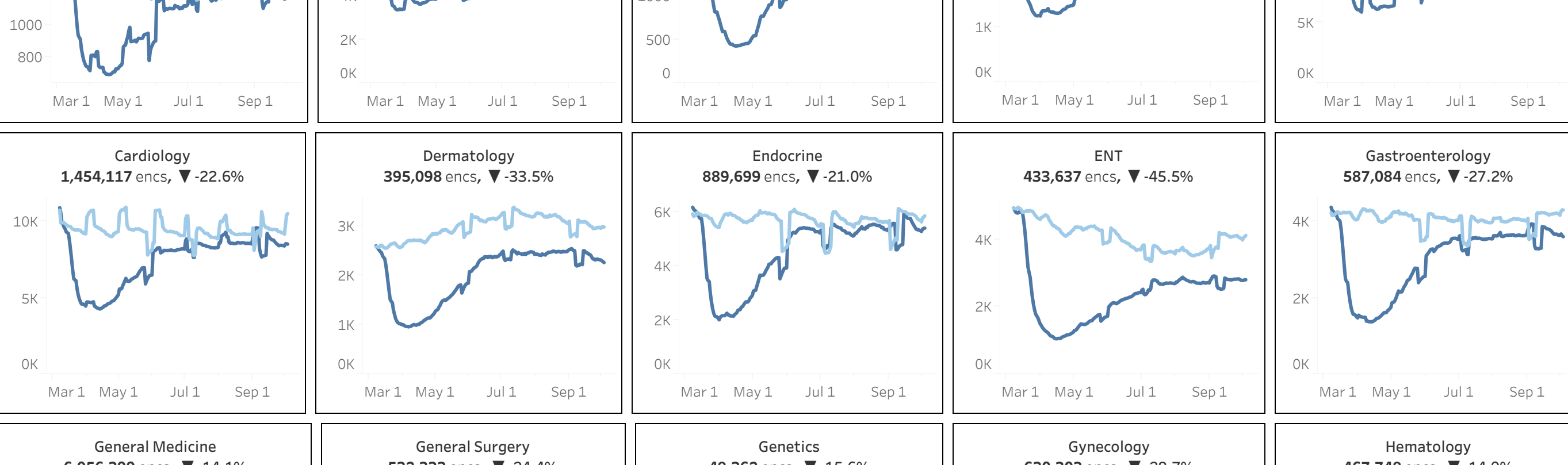
Section 7 Volume Losses by Service Line 2019 vs 2020

Data as of October 3, 2020



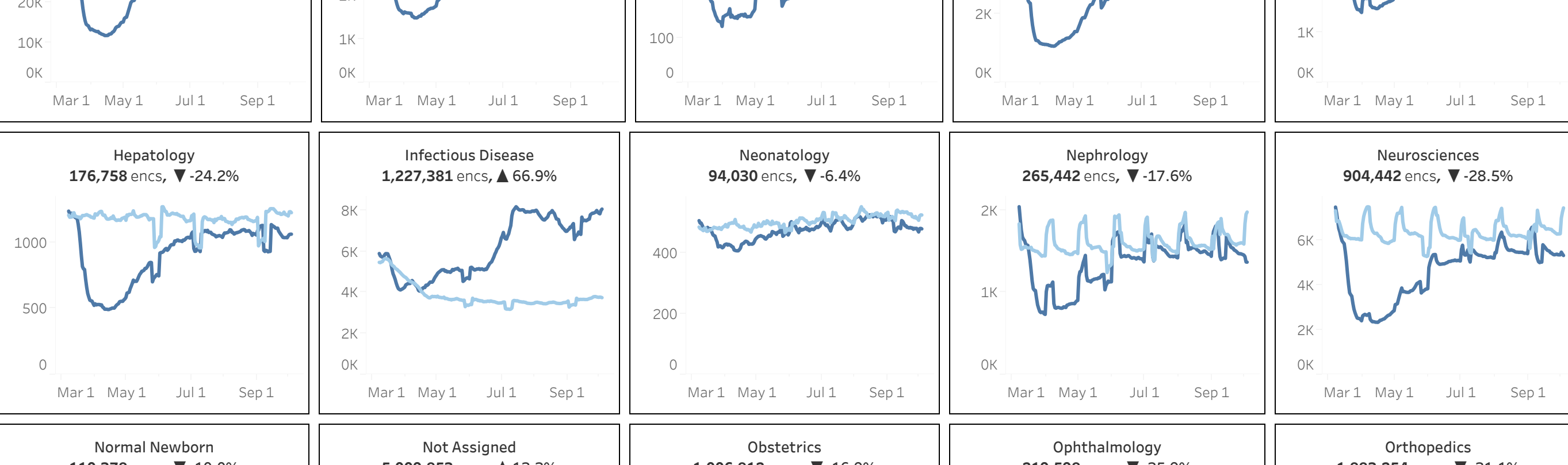
Section 8 Impact to Inpatient Procedures and Surgeries

Data as of October 3, 2020



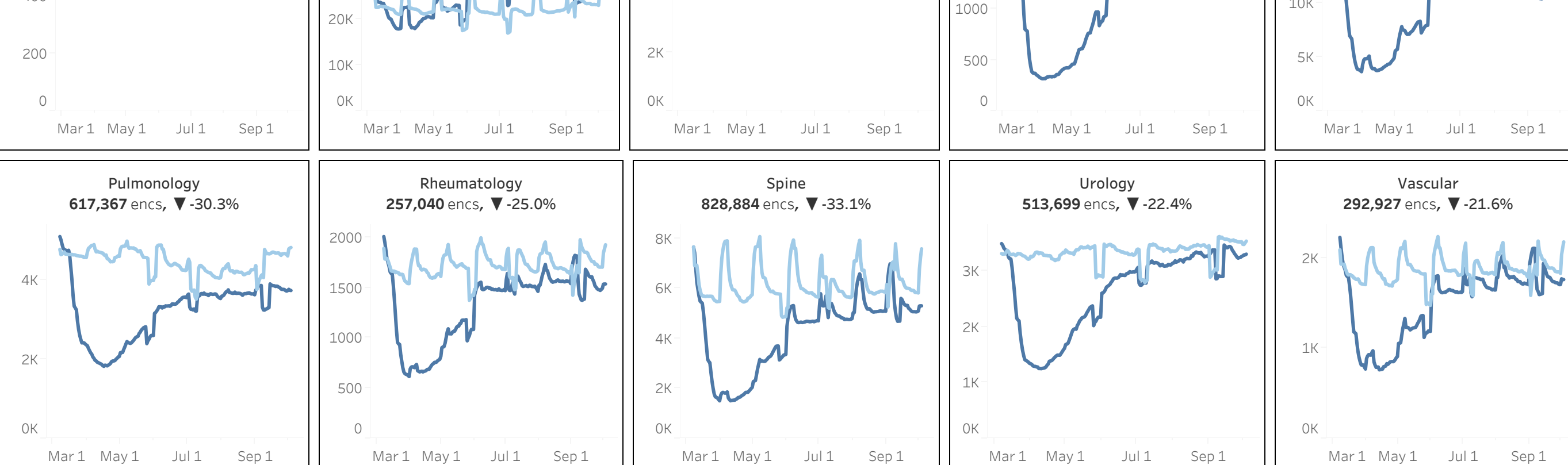
Section 9 Impact to Hospital Outpatient Visits

Data as of October 3, 2020



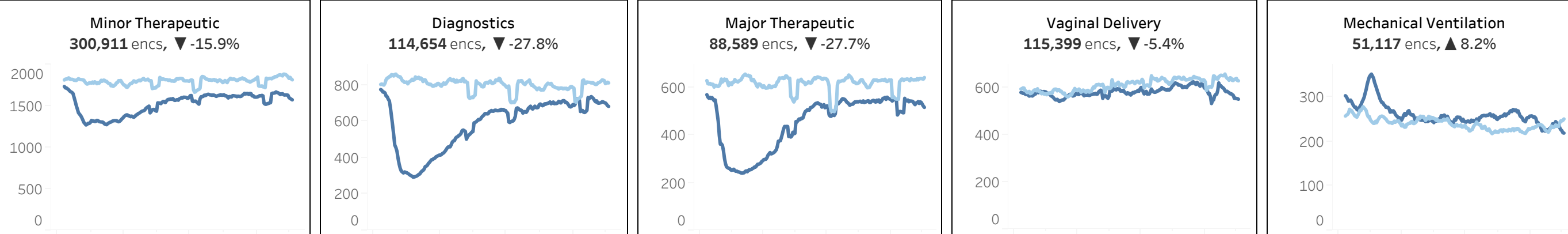
Section 10 Impact to Top 15 Hospital Visits by Care Family

Data as of October 3, 2020



Section 11 Increase in Self Pay and Uninsured

Data as of October 24, 2020



Section 12 Analysis of Impact of COVID-19 on volumes and revenue by clinical service line and sub service lines

•Timeframe: January 1, 2020 to October 24, 2020.
•Data Processing Considerations:
-All encounters with Total Charge = 0 are removed from the encounter count.
Once the encounter has charges greater than 0 it will then be included in the encounter count.
-Self Pay: The hospital billing patient's primary insurance plan and financial class were analyzed to identify patients that did not have insurance.

Analysis of Impact of COVID-19 on volumes and revenue by clinical service line and sub service lines
•Timeframe: January 1, 2020 to October 24, 2020.
•Data Processing Considerations:
-All encounters with Total Charge = 0 are removed from the encounter count.
Once the encounter has charges greater than 0 it will then be included in the encounter count.
-Self Pay: The hospital billing patient's primary insurance plan and financial class were analyzed to identify patients that did not have insurance.

Analysis of Impact of COVID-19 on volumes and revenue by clinical service line and sub service lines
•Timeframe: January 1, 2020 to October 24, 2020.
•Data Processing Considerations:
-All encounters with Total Charge = 0 are removed from the encounter count.
Once the encounter has charges greater than 0 it will then be included in the encounter count.
-Self Pay: The hospital billing patient's primary insurance plan and financial class were analyzed to identify patients that did not have insurance.

Analysis of Impact of COVID-19 on volumes and revenue by clinical service line and sub service lines
•Timeframe: January 1, 2020 to October 24, 2020.
•Data Processing Considerations:
-All encounters with Total Charge = 0 are removed from the encounter count.
Once the encounter has charges greater than 0 it will then be included in the encounter count.
-Self Pay: The hospital billing patient's primary insurance plan and financial class were analyzed to identify patients that did not have insurance.

Analysis of Impact of COVID-19 on volumes and revenue by clinical service line and sub service lines
•Timeframe: January 1, 2020 to October 24, 2020.
•Data Processing Considerations:
-All encounters with Total Charge = 0 are removed from the encounter count.
Once the encounter has charges greater than 0 it will then be included in the encounter count.
-Self Pay: The hospital billing patient's primary insurance plan and financial class were analyzed to identify patients that did not have insurance.

Analysis of Impact of COVID-19 on volumes and revenue by clinical service line and sub service lines
•Timeframe: January 1, 2020 to October 24, 2020.
•Data Processing Considerations:
-All encounters with Total Charge = 0 are removed from the encounter count.
Once the encounter has charges greater than 0 it will then be included in the encounter count.
-Self Pay: The hospital billing patient's primary insurance plan and financial class were analyzed to identify patients that did not have insurance.

Analysis of Impact of COVID-19 on volumes and revenue by clinical service line and sub service lines
•Timeframe: January 1, 2020 to October 24, 2020.
•Data Processing Considerations:
-All encounters with Total Charge = 0 are removed from the encounter count.
Once the encounter has charges greater than 0 it will then be included in the encounter count.
-Self Pay: The hospital billing patient's primary insurance plan and financial class were analyzed to identify patients that did not have insurance.

Analysis of Impact of COVID-19 on volumes and revenue by clinical service line and sub service lines
•Timeframe: January 1, 2020 to October 24, 2020.
•Data Processing Considerations:
-All encounters with Total Charge = 0 are removed from the encounter count.
Once the encounter has charges greater than 0 it will then be included in the encounter count.
-Self Pay: The hospital billing patient's primary insurance plan and financial class were analyzed to identify patients that did not have insurance.

Analysis of Impact of COVID-19 on volumes and revenue by clinical service line and sub service lines
•Timeframe: January 1, 2020 to October 24, 2020.
•Data Processing Considerations:
-All encounters with Total Charge = 0 are removed from the encounter count.
Once the encounter has charges greater than 0 it will then be included in the encounter count.
-Self Pay: The hospital billing patient's primary insurance plan and financial class were analyzed to identify patients that did not have insurance.

Analysis of Impact of COVID-19 on volumes and revenue by clinical service line and sub service lines
•Timeframe: January 1, 2020 to October 24, 2020.
•Data Processing Considerations:
-All encounters with Total Charge = 0 are removed from the encounter count.
Once the encounter has charges greater than 0 it will then be included in the encounter count.
-Self Pay: The hospital billing patient's primary insurance plan and financial class were analyzed to identify patients that did not have insurance.

Analysis of Impact of COVID-19 on volumes and revenue by clinical service line and sub service lines
•Timeframe: January 1, 2020 to October 24, 2020.
•Data Processing Considerations:
-All encounters with Total Charge = 0 are removed from the encounter count.
Once the encounter has charges greater than 0 it will then be included in the encounter count.
-Self Pay: The hospital billing patient's primary insurance plan and financial class were analyzed to identify patients that did not have insurance.

Analysis of Impact of COVID-19 on volumes and revenue by clinical service line and sub service lines
•Timeframe: January 1, 2020 to October 24, 2020.
•Data Processing Considerations:
-All encounters with Total Charge = 0 are removed from the encounter count.
Once the encounter has charges greater than 0 it will then be included in the encounter count.
-Self Pay: The hospital billing patient's primary insurance plan and financial class were analyzed to identify patients that did not have insurance.

Analysis of Impact of COVID-19 on volumes and revenue by clinical service line and sub service lines
•Timeframe: January 1, 2020 to October 24, 2020.
•Data Processing Considerations:
-All encounters with Total Charge = 0 are removed from the encounter count.
Once the encounter has charges greater than 0 it will then be included in the encounter count.
-Self Pay: The hospital billing patient's primary insurance plan and financial class were analyzed to identify patients that did not have insurance.

Analysis of Impact of COVID-19 on volumes and revenue by clinical service line and sub service lines
•Timeframe: January 1, 2020 to October 24, 2020.
•Data Processing Considerations:
-All encounters with Total Charge = 0 are removed from the encounter count.
Once the encounter has charges greater than 0 it will then be included in the encounter count.
-Self Pay: The hospital billing patient's primary insurance plan and financial class were analyzed to identify patients that did not have insurance.

Analysis of Impact of COVID-19 on volumes and revenue by clinical service line and sub service lines
•Timeframe: January 1, 2020 to October 24, 2020.
•Data Processing Considerations:
-All encounters with Total Charge = 0 are removed from the encounter count.
Once the encounter has charges greater than 0 it will then be included in the encounter count.
-Self Pay: The hospital billing patient's primary insurance plan and financial class were analyzed to identify patients that did not have insurance.

Analysis of Impact of COVID-19 on volumes and revenue by clinical service line and sub service lines
•Timeframe: January 1, 2020 to October 24, 2020.
•Data Processing Considerations:
-All encounters with Total Charge = 0 are removed from the encounter count.
Once the encounter has charges greater than 0 it will then be included in the encounter count.
-Self Pay: The hospital billing patient's primary insurance plan and financial class were analyzed to identify patients that did not have insurance.

Analysis of Impact of COVID-19 on volumes and revenue by clinical service line and sub service lines
•Timeframe: January 1, 2020 to October 24, 2020.
•Data Processing Considerations:
-All encounters with Total Charge = 0 are removed from the encounter count.
Once the encounter has charges greater than 0 it will then be included in the encounter count.
-Self Pay: The hospital billing patient's primary insurance plan and financial class were analyzed to identify patients that did not have insurance.

Analysis of Impact of COVID-19 on volumes and revenue by clinical service line and sub service lines
•Timeframe: January 1, 2020 to October 24, 2020.
•Data Processing Considerations:
-All encounters with Total Charge = 0 are removed from the encounter count.
Once the encounter has charges greater than 0 it will then be included in the encounter count.
-Self Pay: The hospital billing patient's primary insurance plan and financial class were analyzed to identify patients that did not have insurance.