

# National Patient and Procedure Volume Tracker™

Biweekly update October 13, 2020

Inpatient volumes continue to run 5-7% below 2019 for several months. It would appear we may have a new normal (Section 2) and this is generally true across regions. We will be carefully watching the rise in COVID-19 admissions "Other Infectious and Parasitic Diseases" Care Family is still going up - this report shows volumes are up 17.1% compared to the same time period in 2019. In our previous report this Care Family was up 166.6% (Section 10).

Observation Visits (Section 3) are consistently down 9-12% versus 2019 with regional differences. Emergency Visits (Section 4) are down even further with a decline of 20% for the past few months with the Northeast running near 25% less volume than 2019. Outpatient visit volume continues to show gains compared to 2019.

Service Line Data (Sections 6) shows strong growth but is related to the fact that the Labor Day holiday is in the two-week period that recent volumes are being compared to. Growth continues in services that are outpatient, chronic and preventative care.

Self pay has started to tick up slightly in all regions. We are watching this carefully to understand whether continued unemployment, furloughs becoming unemployment or people unable to afford COBRA is work.

The data science team at Strata aggregated data from a cohort of 295 hospitals in 59 healthcare delivery systems. The breakdown of hospitals by U.S. Census Region is below.

Census Region				
Midwest	Northeast	South	West	Grand Total
124	35	101	35	295

## Section 1

### Admission Stays and Visits Recent Volume Changes

Data as of October 10, 2020

30 Day Change Compare to 2019				14 Day Change Compare to 2019				Change in Last 30 Days				Change in Last 14 Days			
DailyInpatientAdmissions	▼-5.5%			▼-4.7%				▲0.0%				▼-3.9%			
DailyObservationVisits	▼-12.7%			▼-13.3%				▲0.5%				▲0.9%			
DailyEmergencyVisits	▼-21.5%			▼-19.6%				▼-1.0%				▼-3.2%			
DailyOutpatientVisits	▲2.4%			▲0.5%				▼-0.2%				▲9.6%			

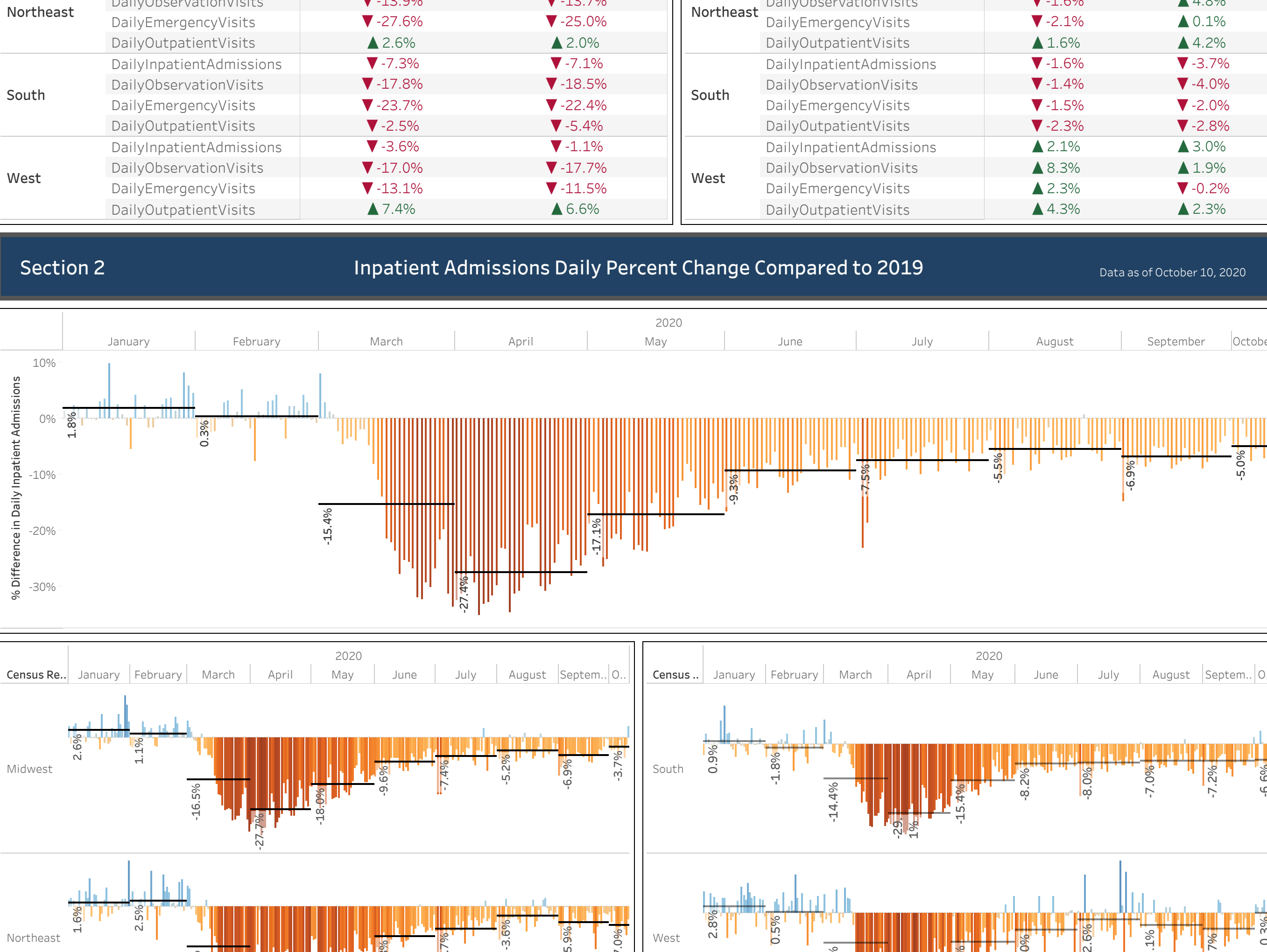
Census Region	Metric	30 Day Change Compare to 2019	14 Day Change Compare to 2019
Midwest	DailyInpatientAdmissions	▼-5.4%	▼-4.6%
	DailyObservationVisits	▼-2.1%	▼-3.5%
	DailyEmergencyVisits	▼-21.5%	▼-19.5%
	DailyOutpatientVisits	▲2.2%	▼-1.0%
Northeast	DailyInpatientAdmissions	▼-5.7%	▼-5.9%
	DailyObservationVisits	▼-13.9%	▼-13.7%
	DailyEmergencyVisits	▼-27.6%	▼-25.0%
	DailyOutpatientVisits	▲2.6%	▲2.0%
South	DailyInpatientAdmissions	▼-7.3%	▼7.1%
	DailyObservationVisits	▼17.8%	▼18.5%
	DailyEmergencyVisits	▼23.7%	▼22.4%
	DailyOutpatientVisits	▼-2.5%	▼-5.4%
West	DailyInpatientAdmissions	▼-3.0%	▼-1.1%
	DailyObservationVisits	▼-17.6%	▼-17.7%
	DailyEmergencyVisits	▼-13.1%	▼-11.5%
	DailyOutpatientVisits	▲7.4%	▲6.6%

Census Region	Metric	Change in Last 30 Days	Change in Last 14 Days
Midwest	DailyInpatientAdmissions	▼-0.7%	▼-0.6%
	DailyObservationVisits	▼-3.1%	▼-1.9%
	DailyEmergencyVisits	▼-2.9%	▼-1.2%
	DailyOutpatientVisits	▼-4.3%	▲5.9%
Northeast	DailyInpatientAdmissions	▲0.3%	▼-2.7%
	DailyObservationVisits	▼-1.6%	▲4.8%
	DailyEmergencyVisits	▼-2.1%	▲0.1%
	DailyOutpatientVisits	▲1.6%	▲4.2%
South	DailyInpatientAdmissions	▼-1.6%	▼-3.7%
	DailyObservationVisits	▼-1.4%	▼-4.0%
	DailyEmergencyVisits	▼-1.5%	▼-2.0%
	DailyOutpatientVisits	▼-2.3%	▼-2.8%
West	DailyInpatientAdmissions	▲2.1%	▲3.9%
	DailyObservationVisits	▲8.3%	▲1.9%
	DailyEmergencyVisits	▲2.3%	▼-0.2%
	DailyOutpatientVisits	▲4.3%	▲2.3%

## Section 2

### Inpatient Admissions Daily Percent Change Compared to 2019

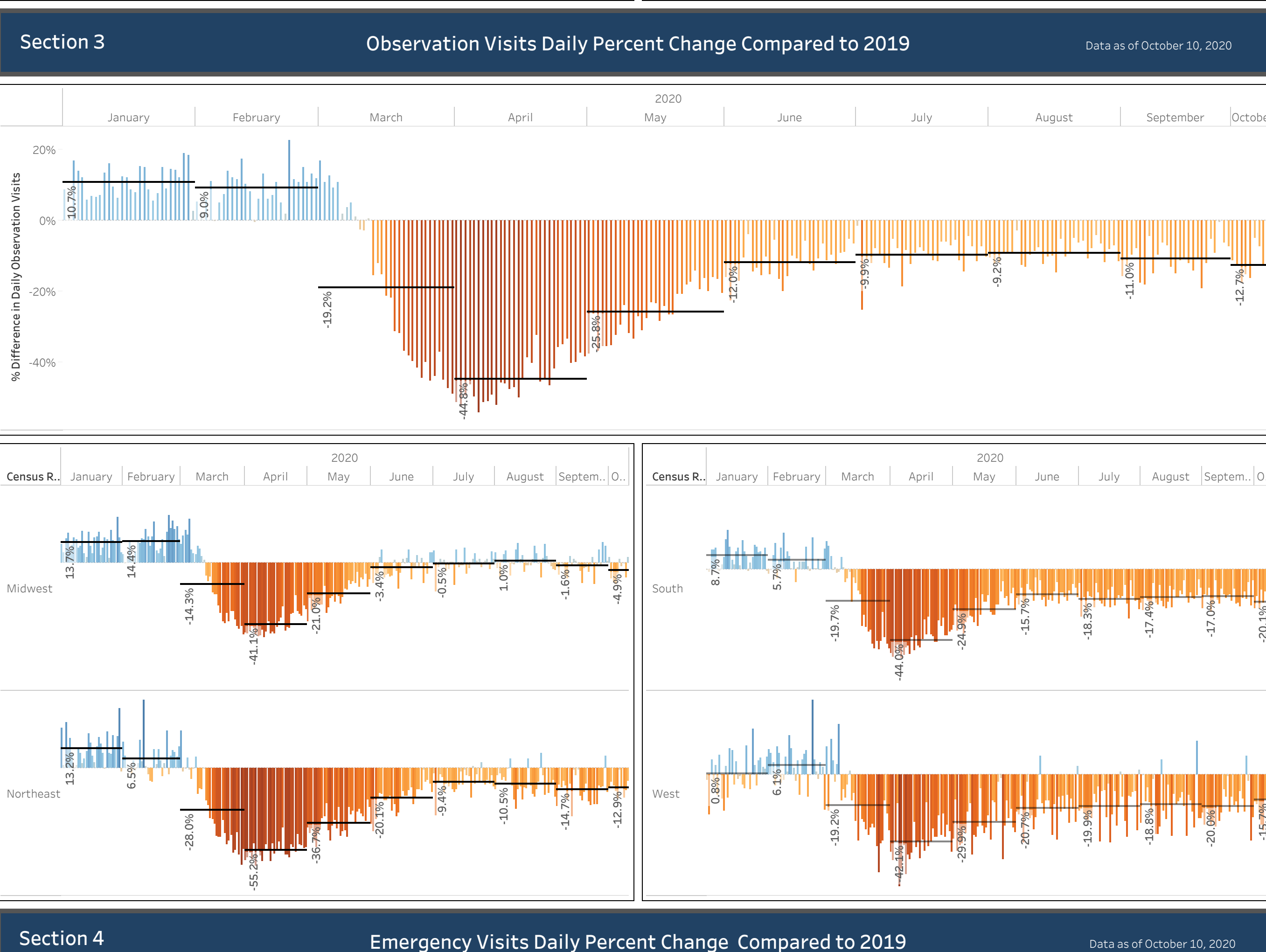
Data as of October 10, 2020



## Section 3

### Observation Visits Daily Percent Change Compared to 2019

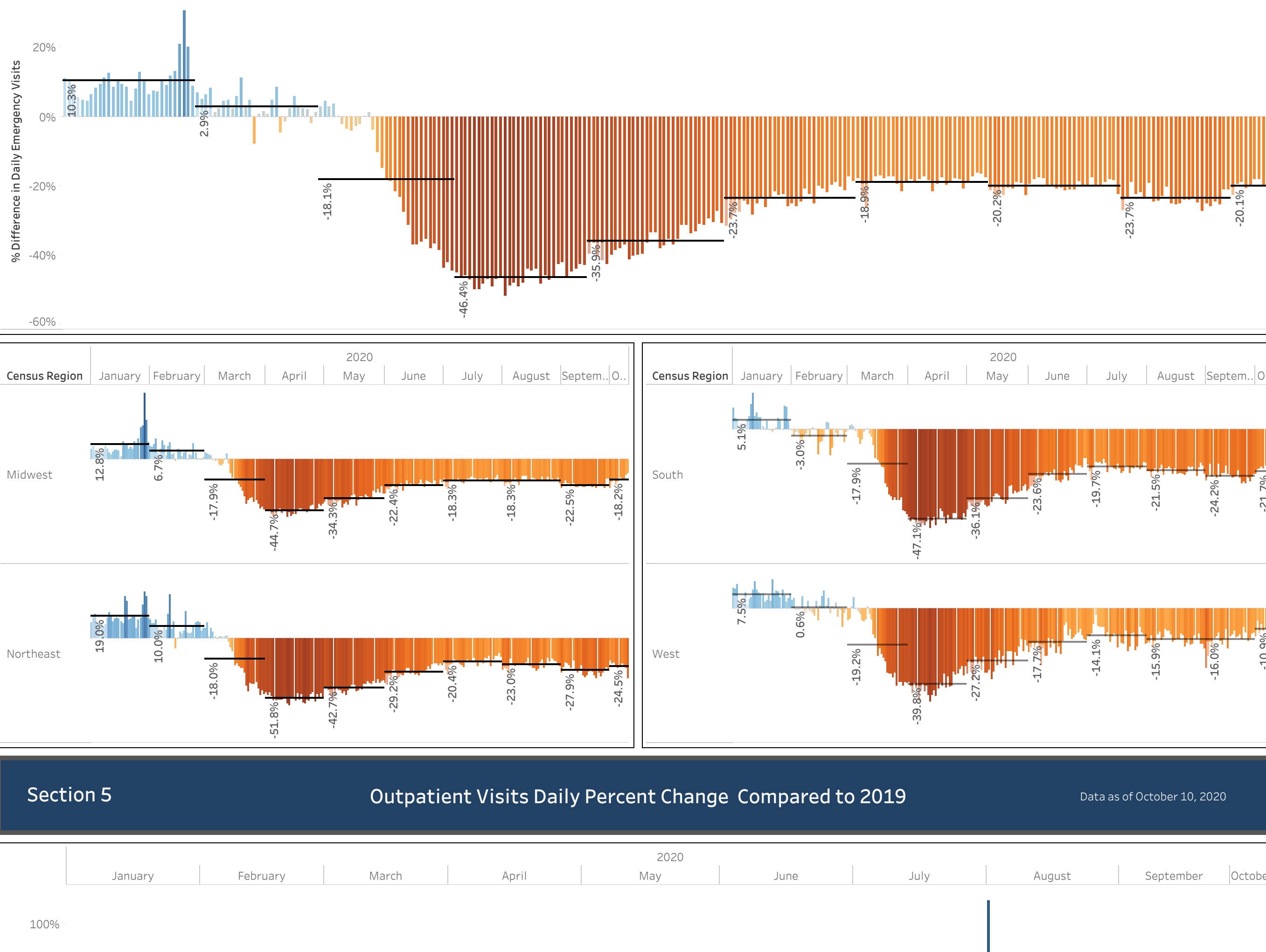
Data as of October 10, 2020



## Section 4

### Emergency Visits Daily Percent Change Compared to 2019

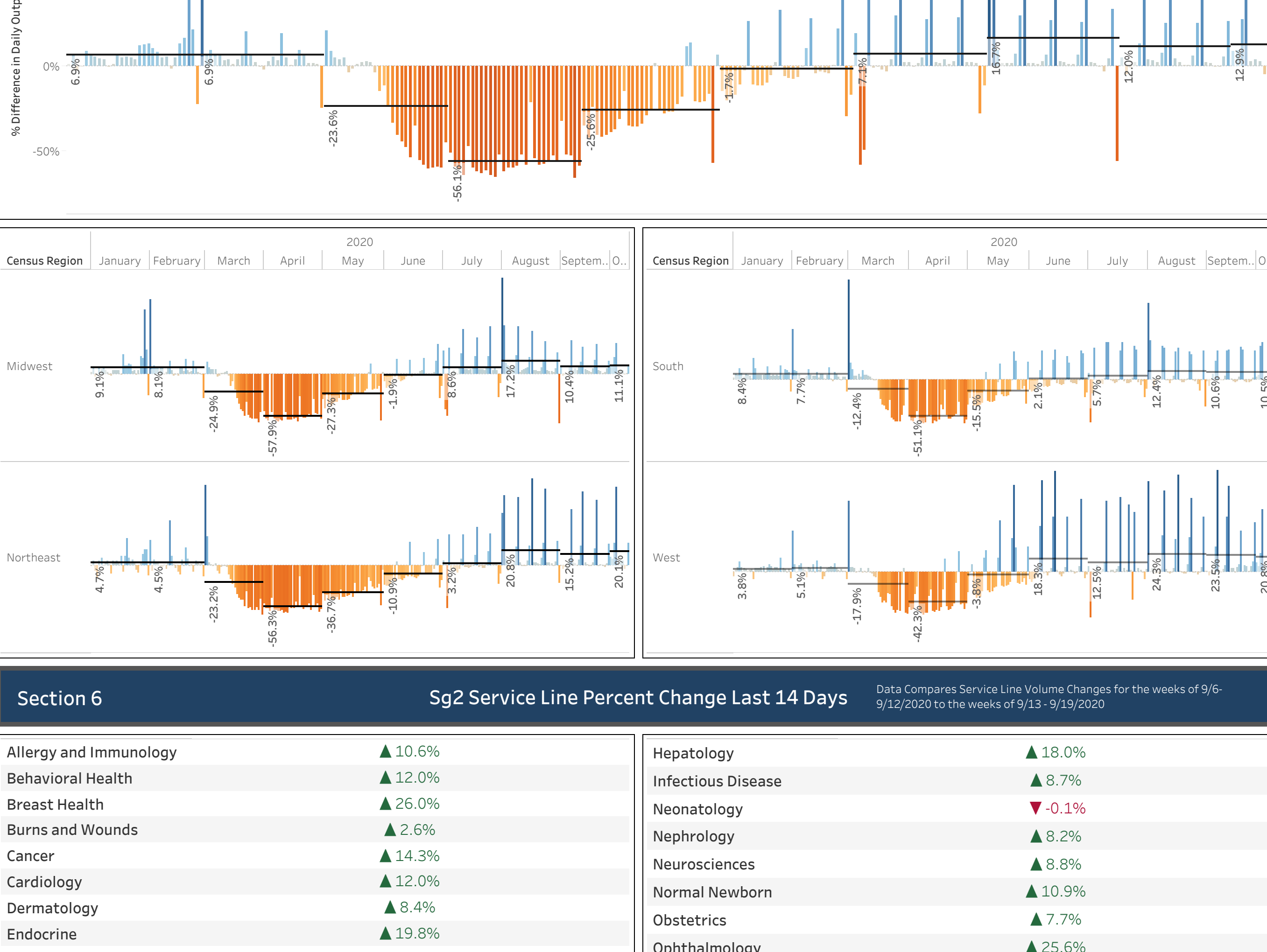
Data as of October 10, 2020



## Section 5

### Outpatient Visits Daily Percent Change Compared to 2019

Data as of October 10, 2020



## Section 6

### Sg2 Service Line Percent Change Last 14 Days

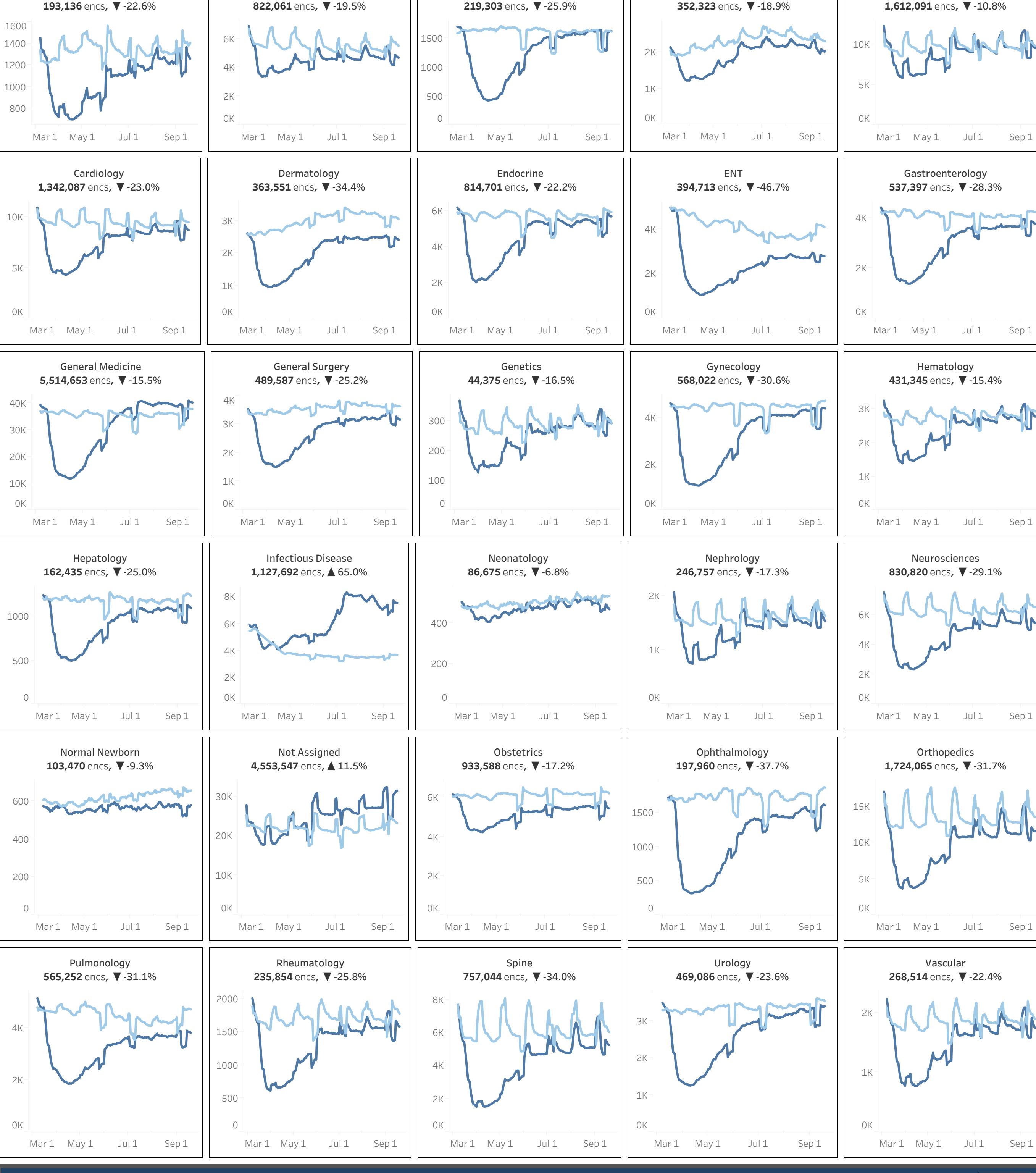
Data Compares Service Line Volume Changes for the weeks of 9/6-9/12/2020 to the weeks of 9/13-9/19/2020

Allergy and Immunology	▲10.6%	Hepatology	▲18.0%
Behavioral Health	▲12.0%	Infectious Disease	▲8.7%
Breast Health	▲26.0%	Neonatology	▼-0.1%
Burns and Wounds	▲2.6%	Nephrology	▲8.2%
Cancer	▲14.3%	Neurosciences	▲8.8%
Cardiology	▲12.0%	Normal Newborn	▲10.9%
Dermatology	▲8.4%	Obstetrics	▲7.7%
Endocrine	▲19.8%	Ophthalmology	▲25.6%
ENT	▲10.4%	Orthopedics	▲12.0%
Gastroenterology	▲14.4%	Pulmonology	▲15.8%
General Medicine	▲17.0%	Rheumatology	▲15.0%
General Surgery	▲6.0%	Spine	▲12.1%
Genetics	▲16.7%	Urology	▲18.0%
Gynecology	▲24.1%	Vascular	▲10.4%
Hematology	▲14.9%		

## Section 7

### Volume Losses by Service Line 2019 vs 2020

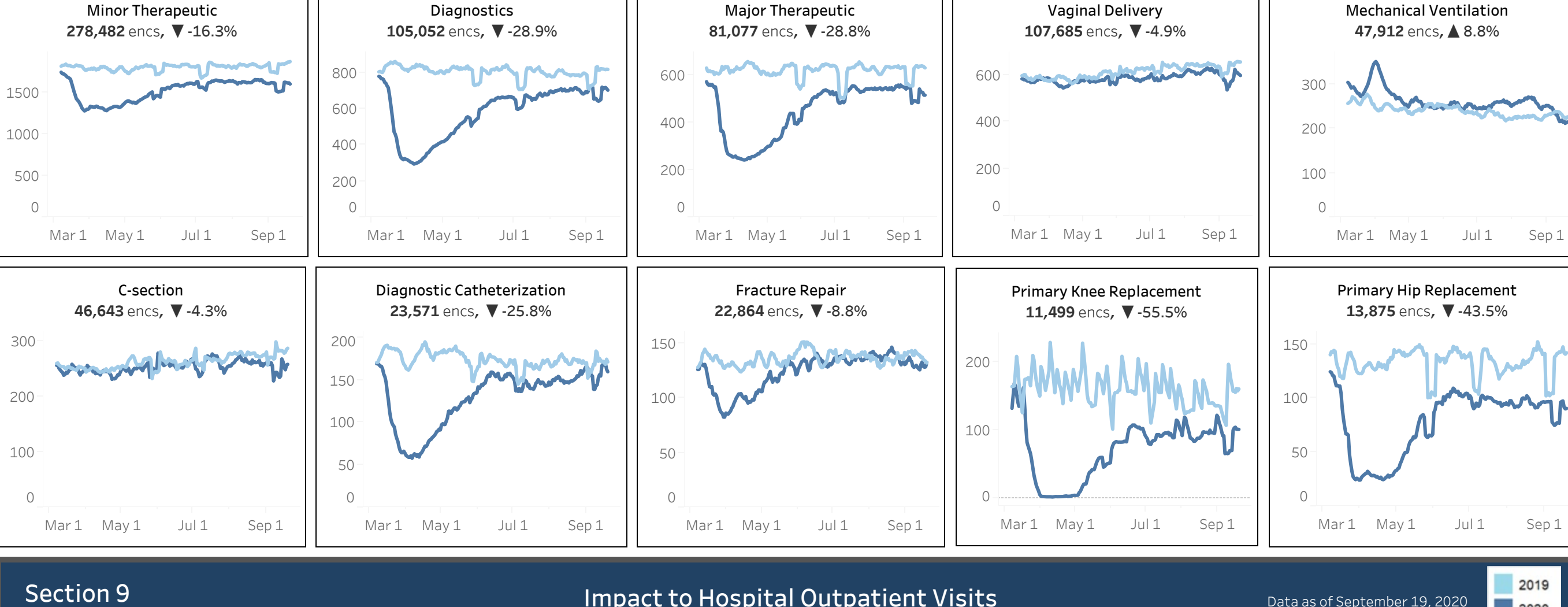
Data as of September 19, 2020



## Section 8

### Impact to Inpatient Procedures and Surgeries

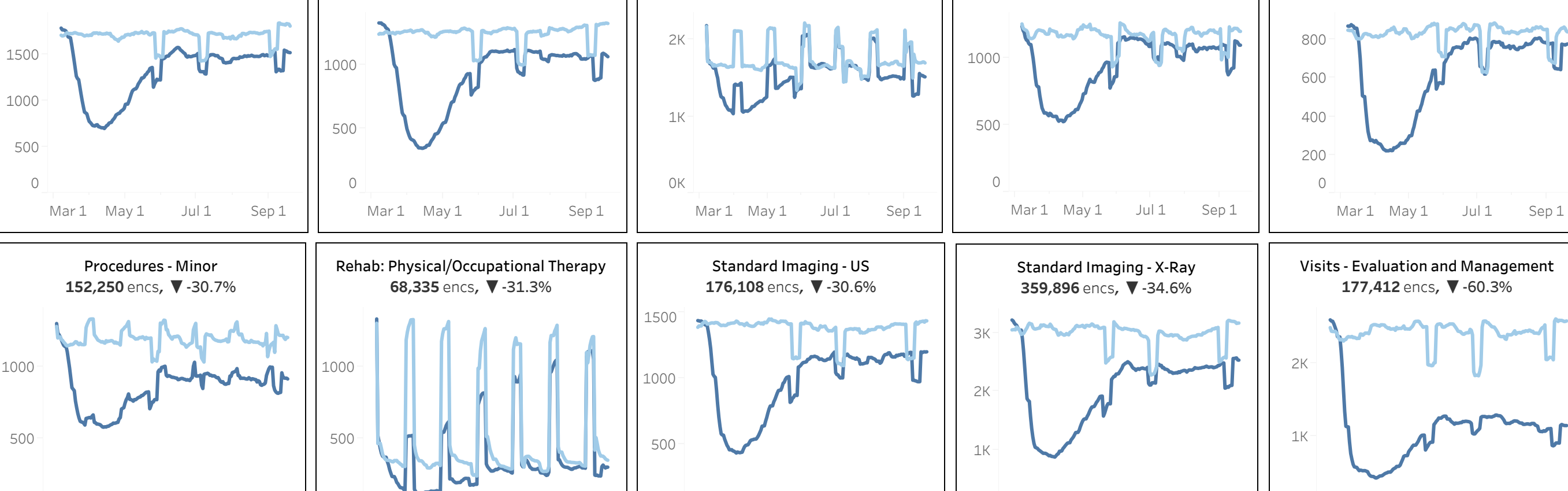
Data as of September 19, 2020



## Section 9

### Impact to Hospital Outpatient Visits

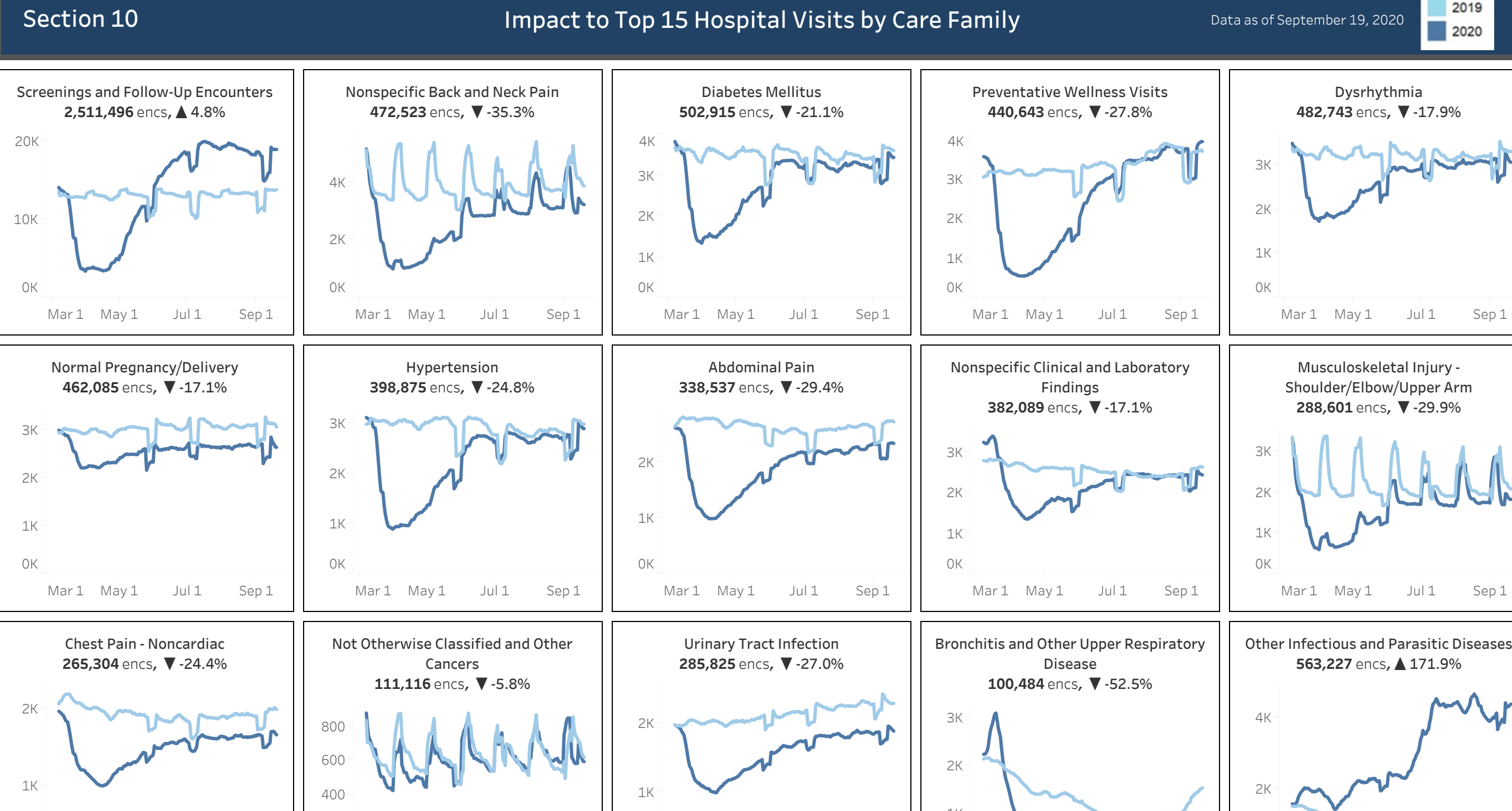
Data as of September 19, 2020



## Section 10

### Impact to Top 15 Hospital Visits by Care Family

Data as of September 19, 2020



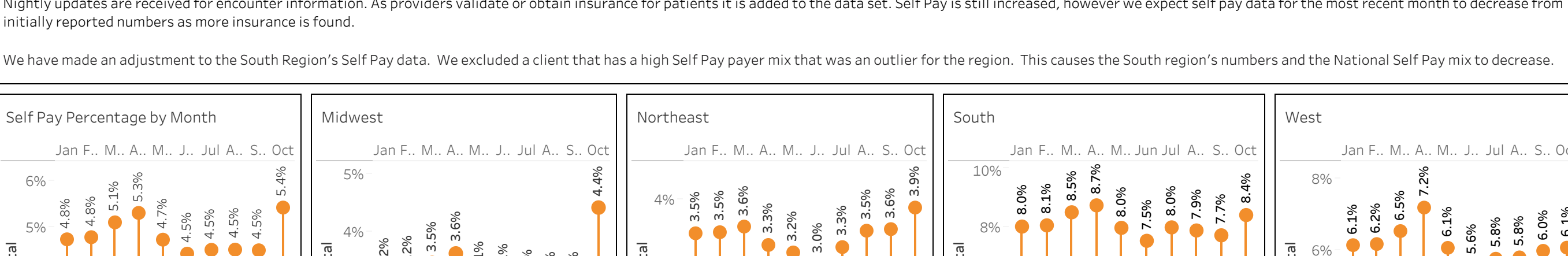
## Section 11

### Increase in Self Pay and Uninsured

Data as of October 10, 2020

Nightly updates are received for encounter information. As providers validate or obtain insurance for patients it is added to the data set. Self Pay is still increased, however we expect self pay data for the most recent month to decrease from initially reported numbers as more insurance is found.

We have made an adjustment to the South Region's Self Pay data. We excluded a client that has a high Self Pay payer mix that was an outlier for the region. This causes the South region's numbers and the National Self Pay mix to decrease.



Data Source: 59 StrataSphere health systems with decision support and valid coded encounter data available for both 2019 and 2020. Strata reviewed a total of 10 million encounters for matching timeframes in 2019 and 2020. All hospital billing encounters with nonzero charges were pulled.

Analysis of Impact of COVID-19 on volumes and revenue by clinical service line and sub service lines

Timeframe: January 3, 2020 to October 10, 2020.

Data Processing Considerations: -All encounters with Total Charge = 0 are removed from the encounter count. Once the encounter has charges greater than 0 it will then be included in the encounter count.

-Self Pay: The hospital billing patient's primary insurance plan and financial class were analyzed to identify patients that did not have insurance.

Baseline: Baseline dates between March 20 and September 19, 2019.

COVID-era: Admit dates between March 20 and September 19, 2020.

The COVID-era timeline was chosen to reflect the first full weeks of widespread closures and shelter-in-place orders. The end date was chosen to ensure sufficient time for patient discharge and diagnosis coding to take place. The time frame will be expanded as time passes.

Data Processing: All encounters were run through the 2020 Sg2 Care Grouping™ to obtain service lines and CARE families.

Methodology and Output: For all columns, data was aggregated by either service line or CARE family, and the metrics were calculated using the aggregate values.

Baseline encounters: Total number of encounters in the 2019 time frame.

COVID-era encounters: Total number of encounters in the 2020 time frame.

Volume loss: Baseline encounters minus COVID-era encounters.

Percent volume loss: Volume loss divided by baseline encounters.