

strata

National Patient and Procedure Volume Tracker™

Monthly Update 2/8/2021

Volumes are down for January, this is likely due to the New Year’s holiday that is included in the past 30 days. There is a deceleration to 0% over the past few weeks in Outpatient volumes as well as Emergency visits. Inpatient has been down but only slightly (Section 1.2). Notable: Children’s’ Hospitals volumes have been stable to trending upward (Section 6.2).

Service line data is through 1/9/21 and the rapid increases are largely due to the post-holiday volumes (Section 7.1). Note that the “Not Assigned” service line is higher than normal. This tends to mean that there have been delays in coding, likely related to the holidays.

For the first time the Infectious Disease service line is decreasing (Section 7.2). However, COVID-19 specific data (Section 9), shows an increase. The discrepancy between the two charts is related to other Infectious Disease types decreasing (for example Septicemia). It is also possible that as the “Not Assigned” category decreases, more volume will be added to the Infectious Disease service line in the next report.

COVID-19 inpatient volumes as a percentage of hospitalization are decreasing in all U.S. Census Regions except for the West (Section 9). COVID-19 inpatient volumes are also declining for all but the 65 and over age group. We hope vaccination progress will start to see the older age groups also trend down. Note, we found a processing error with the GMLoS calculation code from January. This report better reflects trends in COVID-19 LOS and we have also corrected the January report.

We continue to watch the outpatient shift in Total Joint Replacements (Section 8). With the coming changes to site of care differentials and the end of the inpatient only list, the inpatient to outpatient shift will be something to watch carefully. Health Systems will need to continue to prepare and adjust for increasing shift and competition.

Our January report was two weeks ago, therefore for **this report only** the new data is for two weeks but we are reporting the standard 30-day changes. Our March report (scheduled for 3/8/21) will align visually between the new data and 30-day changes.

Since our previous report, we have added two new health systems to the data set – we are now reporting data from 333 hospitals, the breakdown by U.S. Census Region is below. As a reminder, historical numbers will change. First because of the addition of 4 hospitals and also because we exclude encounters until charges are added. As charges are added, we add them to the count. For example, in Section 1.2 if you compare the week of 1/3/21 from this report vs the previous report you will see that IP admissions changed from 1.7% to 1.6%. The changes are nominal, but we want updated data to be as accurate as possible.

Midwest	Northeast	South	West	Grand Total
129	36	124	44	333

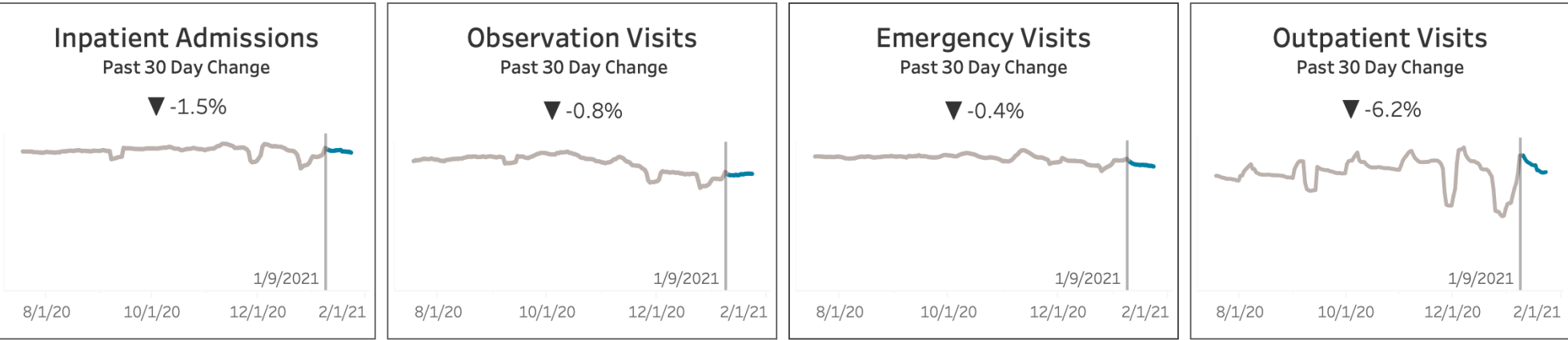
Section 1.1

National Level Recent Volume Changes

Data as of 1/23/2021

Historical Data

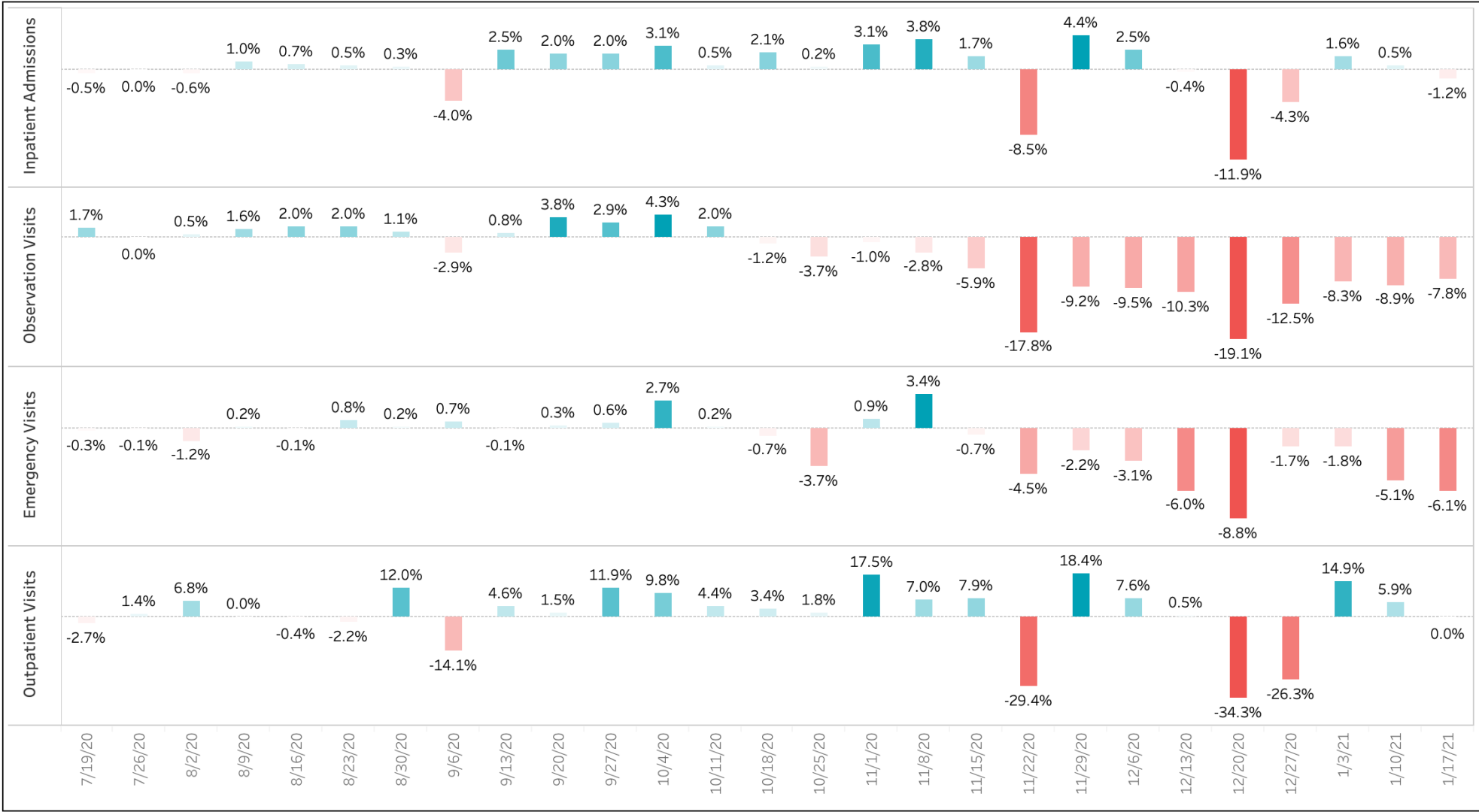
New Data



Section 1.2

National Level Weekly Volume Changes Compared to Previous 26 Weeks Rolling Average

Data as of 1/23/2021



Section 1.3

National Level Inpatient Conversion Rate

Data as of 1/23/2021

Historical Data

New Data



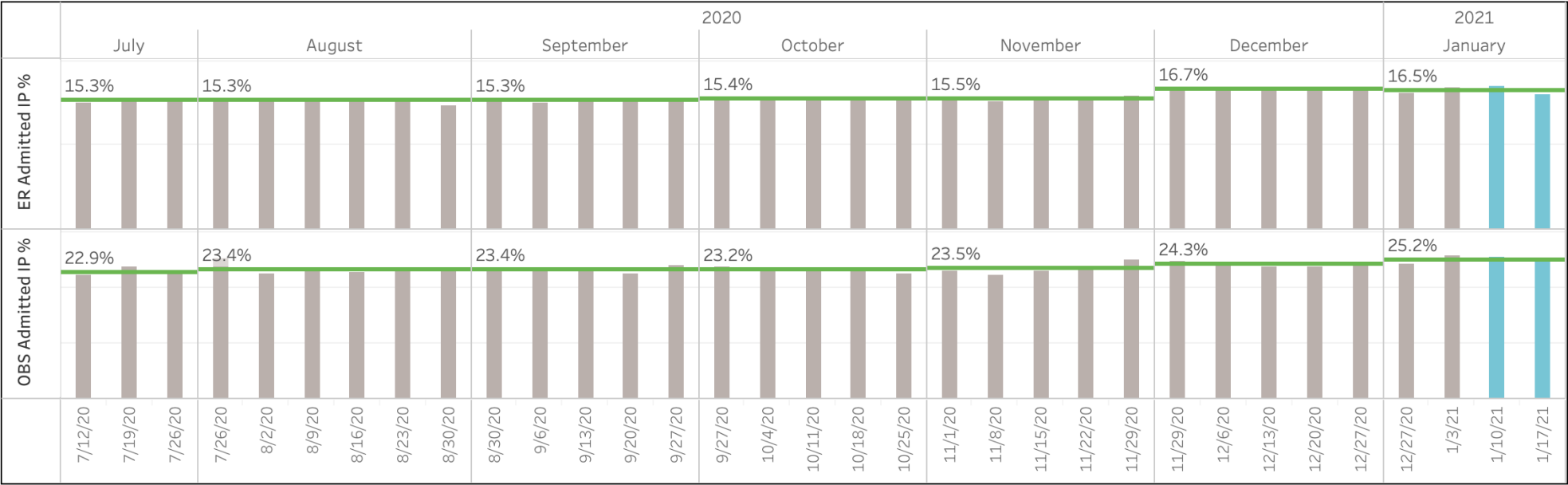
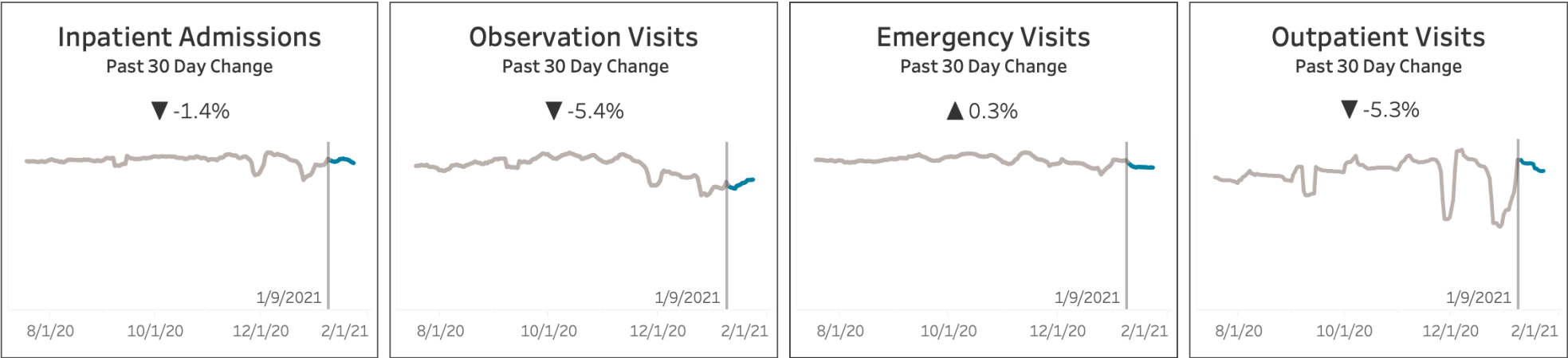
Section 2.1

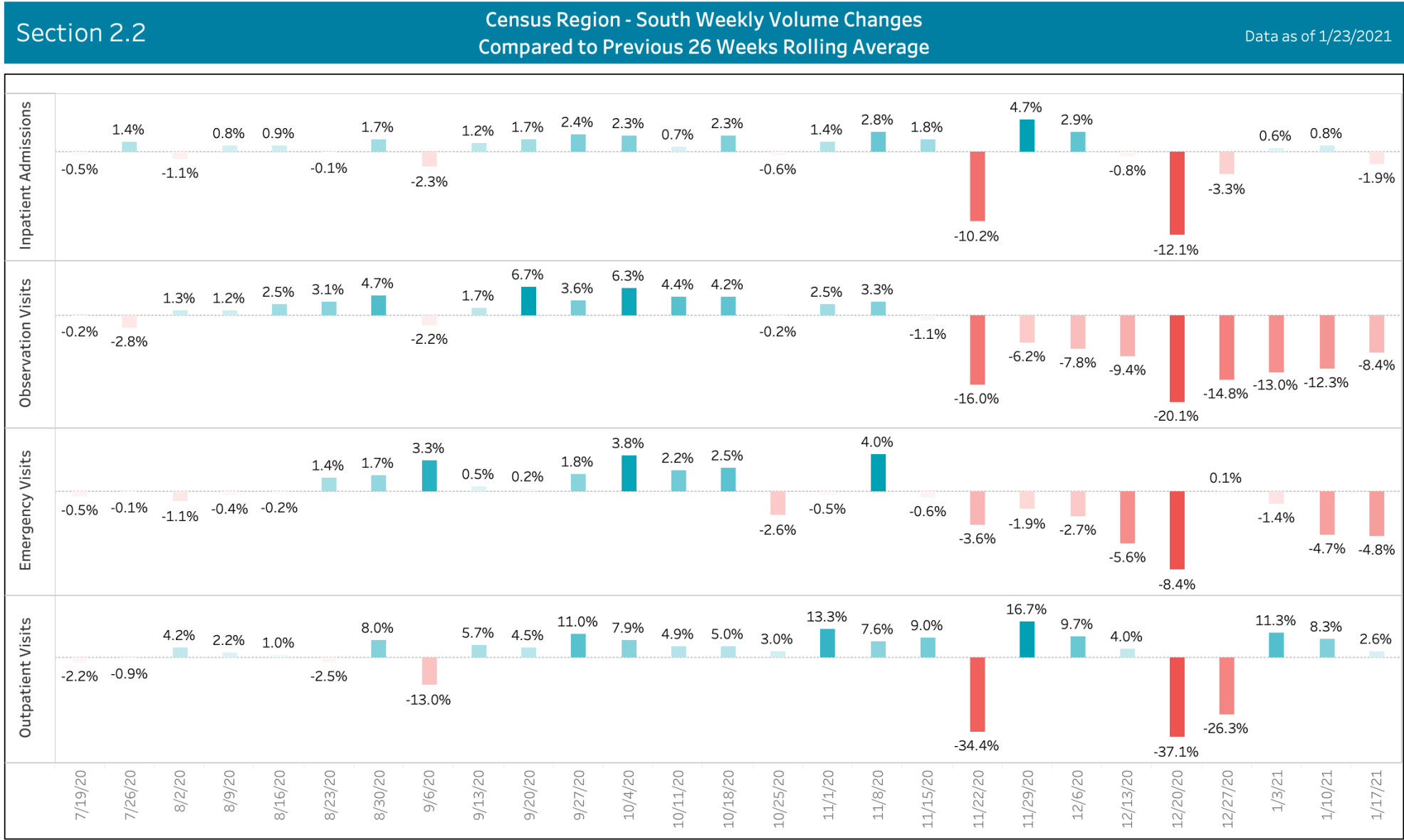
Census Region-South Recent Volume Changes

Data as of 1/23/2021

Historical Data

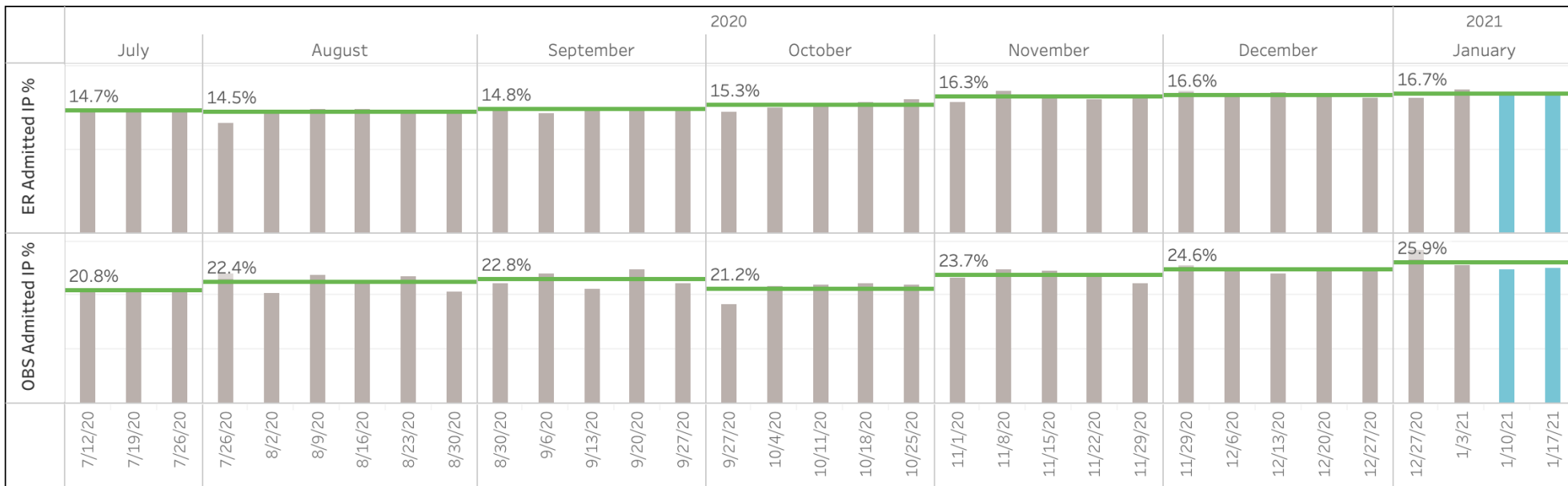
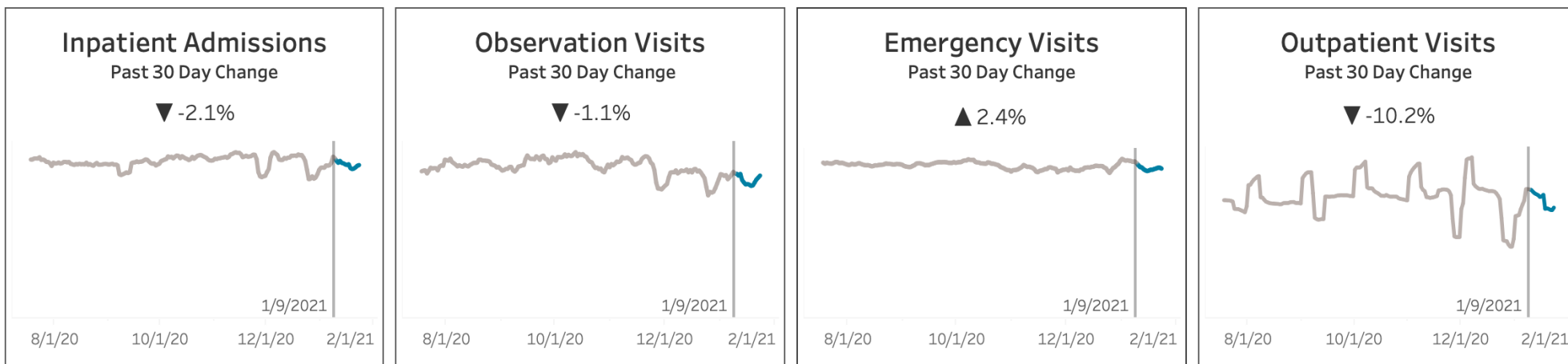
New Data





Data as of 1/23/2021

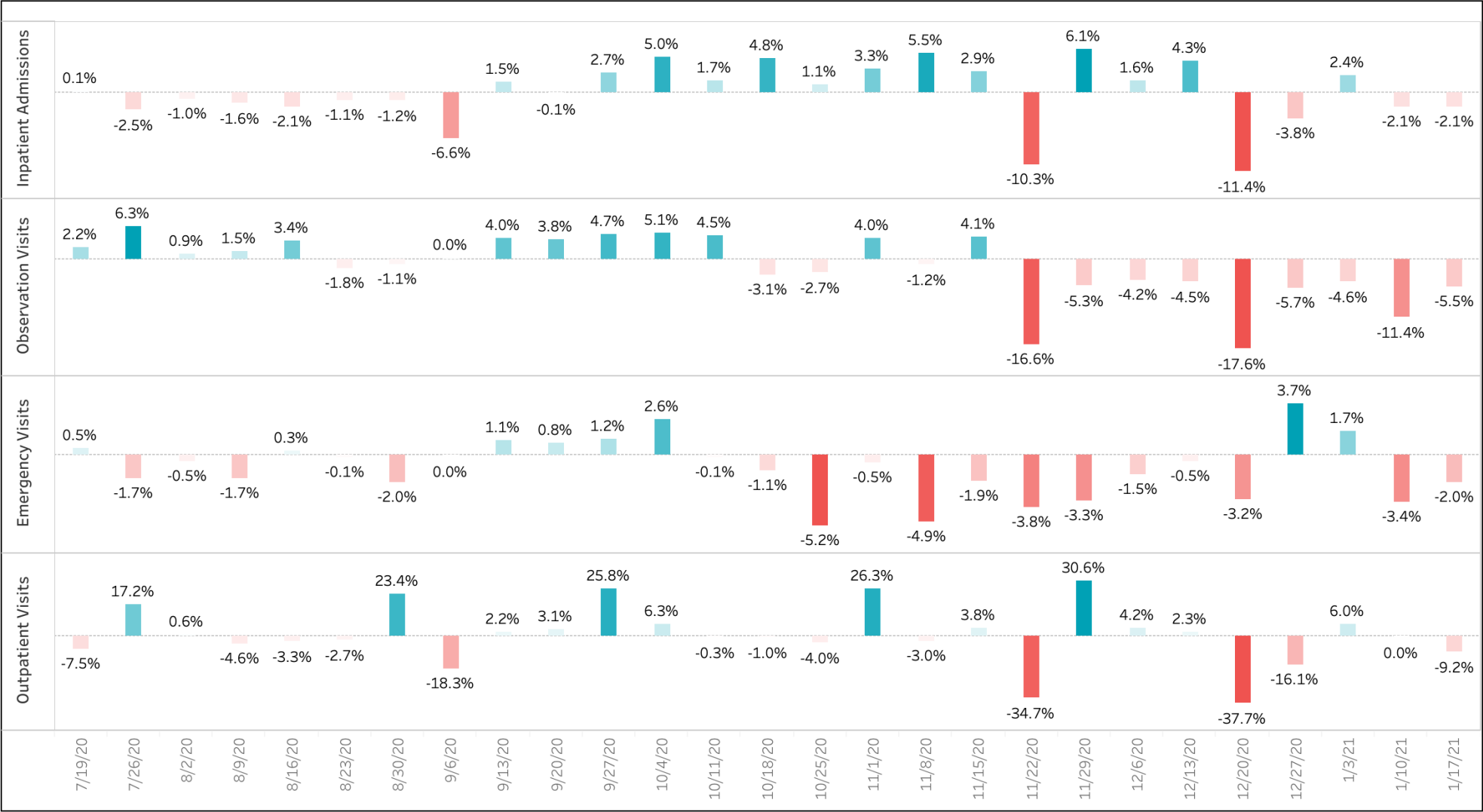
- Historical Data
- New Data



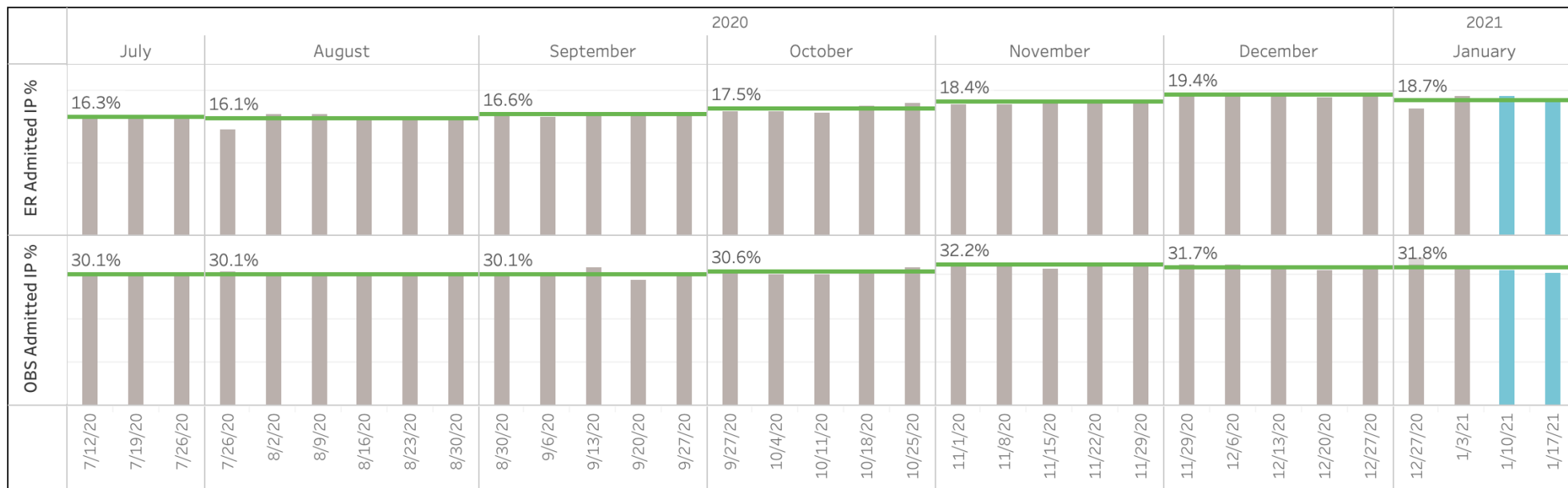
Section 3.2

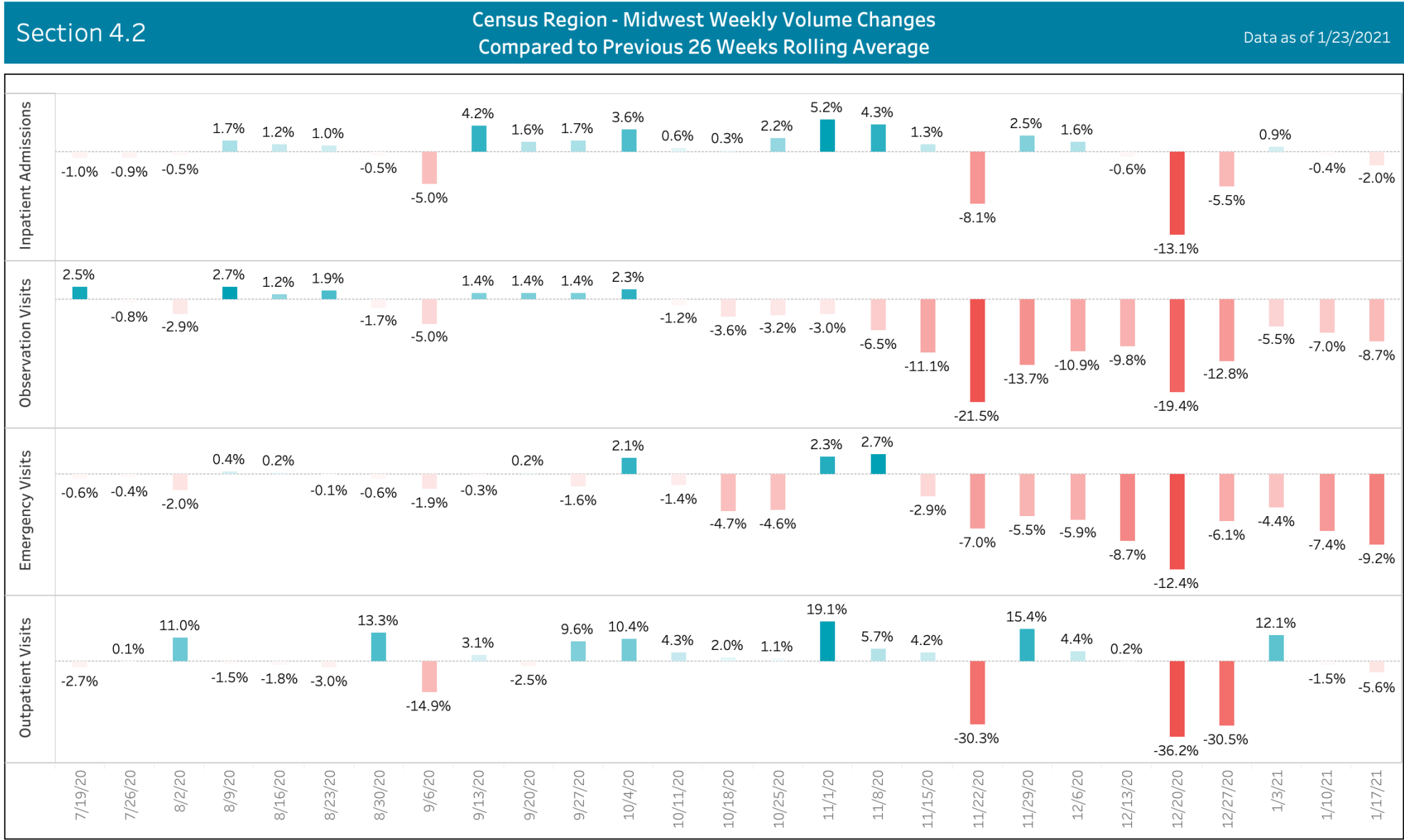
Census Region - West Weekly Volume Changes
Compared to Previous 26 Weeks Rolling Average

Data as of 1/23/2021

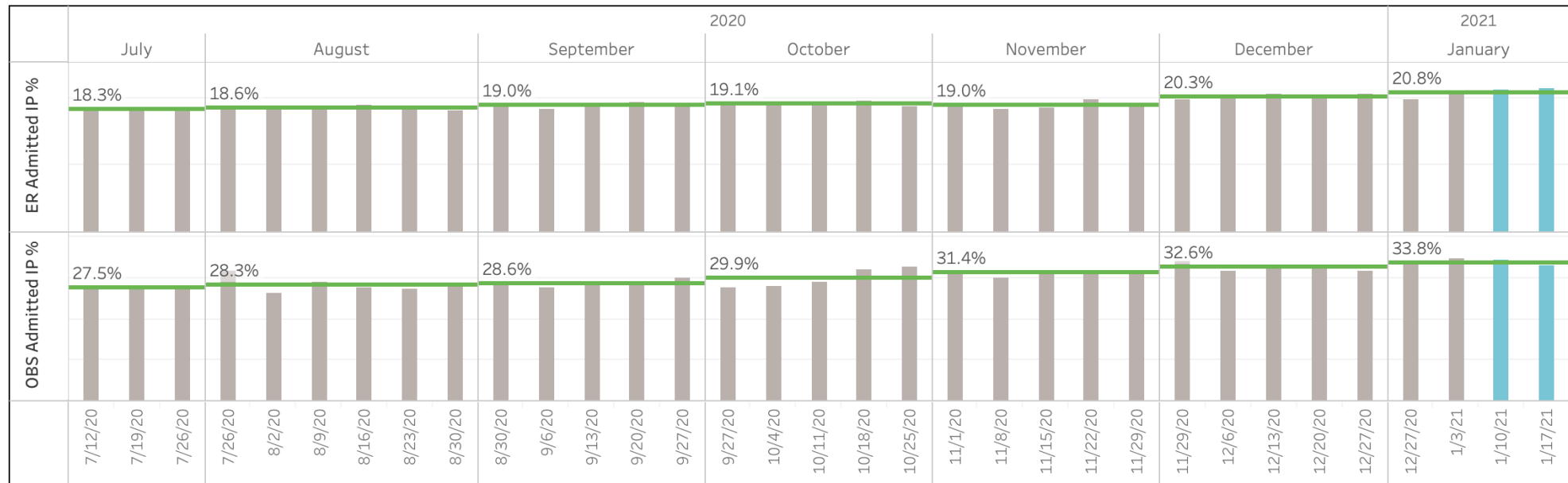


- Historical Data
- New Data





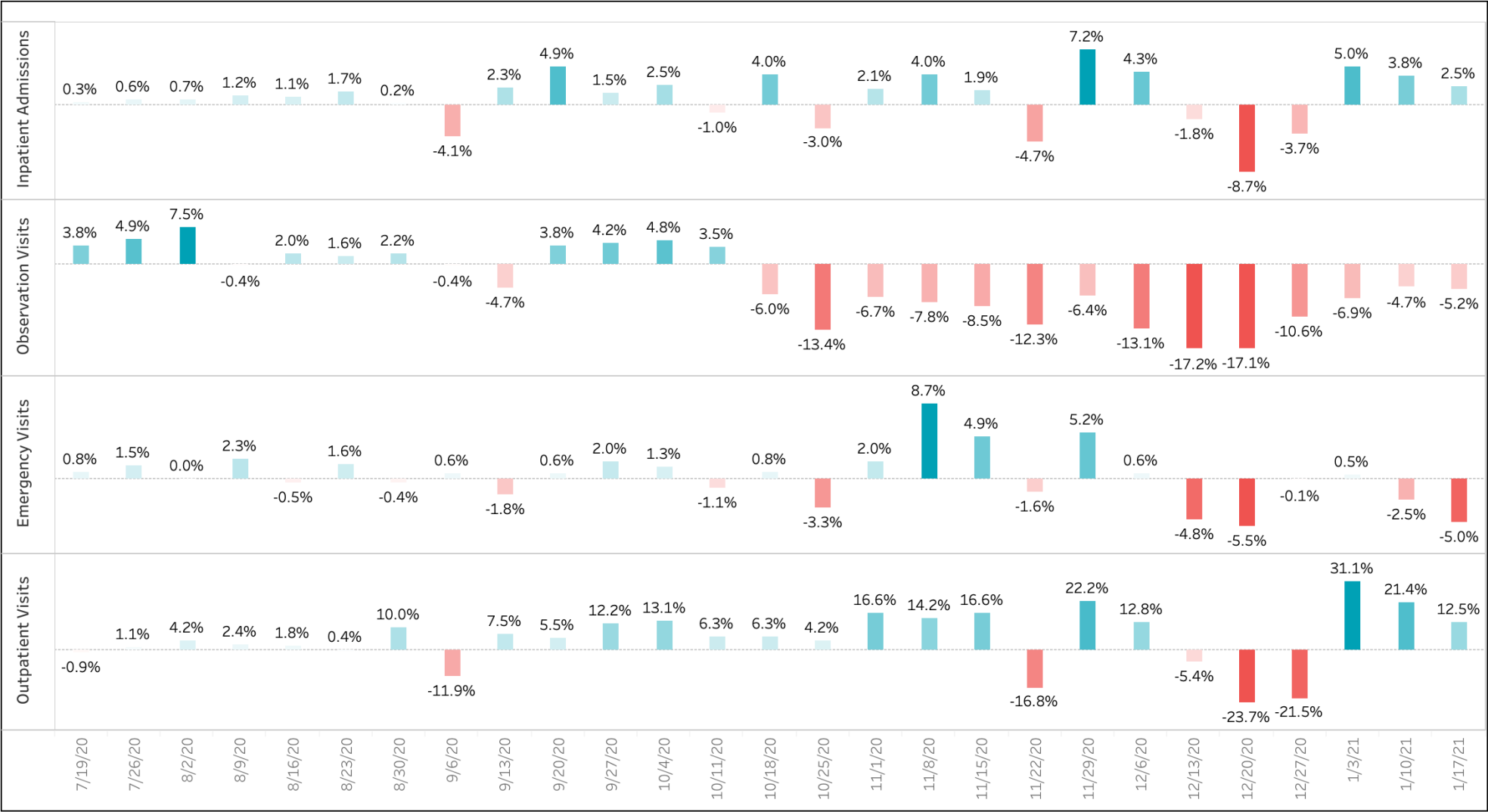
- Historical Data
- New Data



Section 5.2

Census Region - Northeast Weekly Volume Changes
Compared to Previous 26 Weeks Rolling Average

Data as of 1/23/2021



Section 6.1

National Level Children’s Hospitals Recent Volume Changes

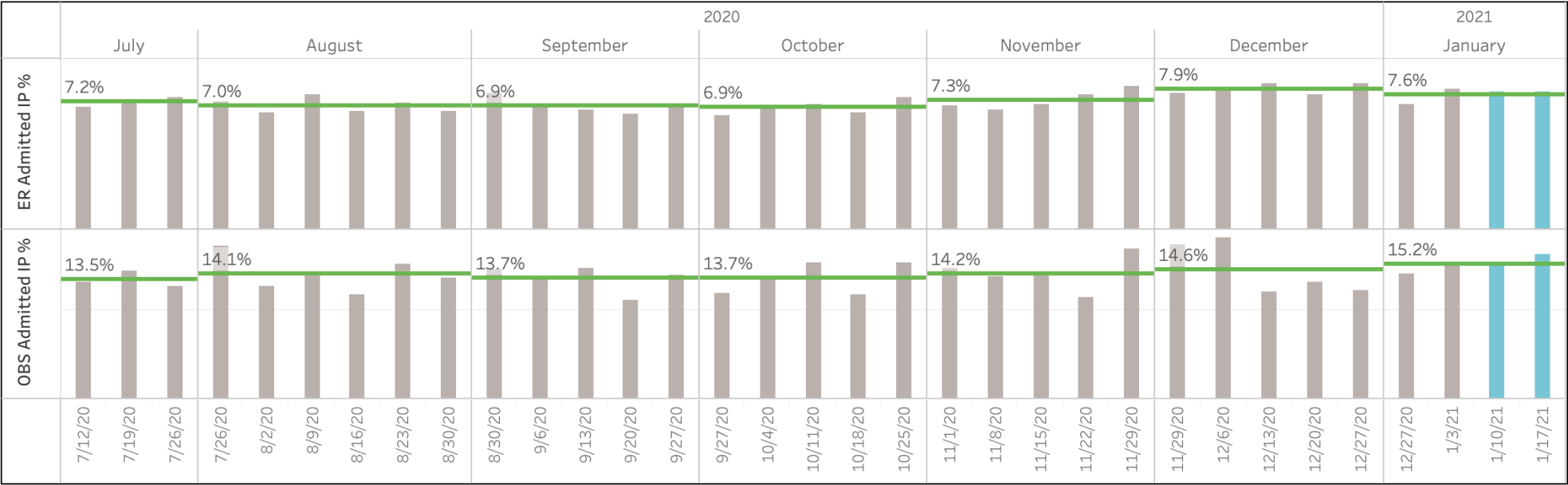
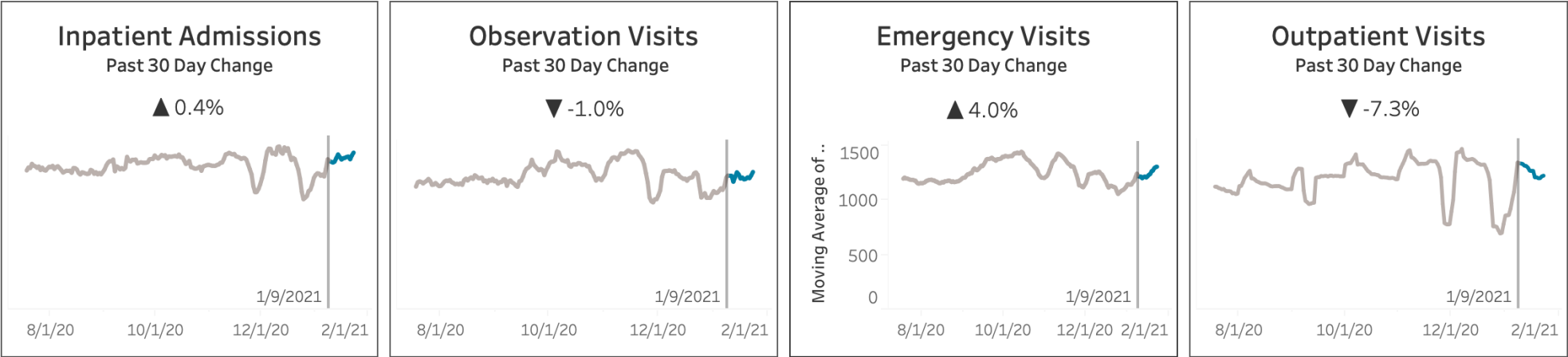
Data as of 1/23/2021

Children’s Hospital #

12

Historical Data

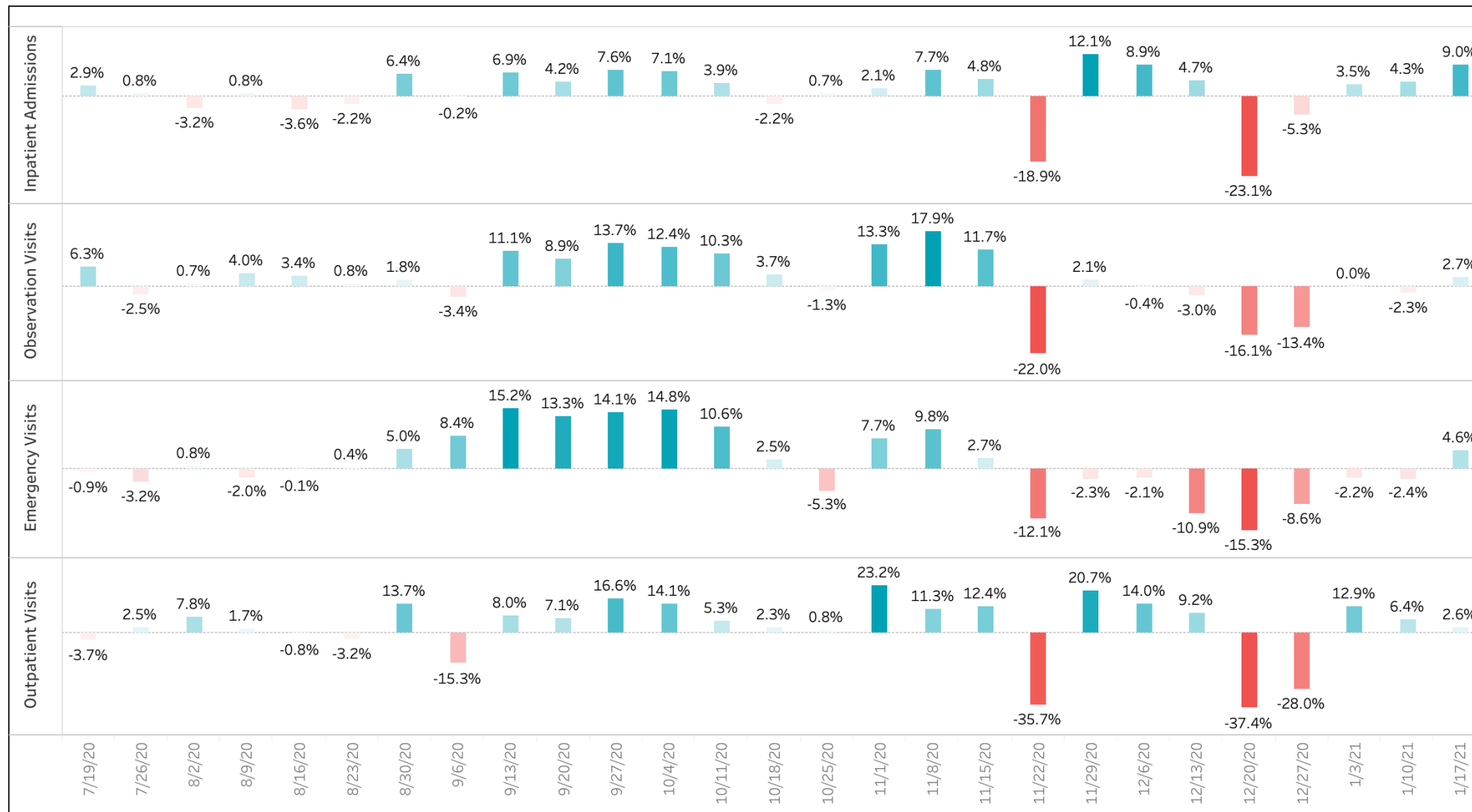
New Data



Section 6.2

Children's Hospital Weekly Changes Compared to Previous 26 Weeks Rolling Average

Data as of 1/23/2021



Section 7.1

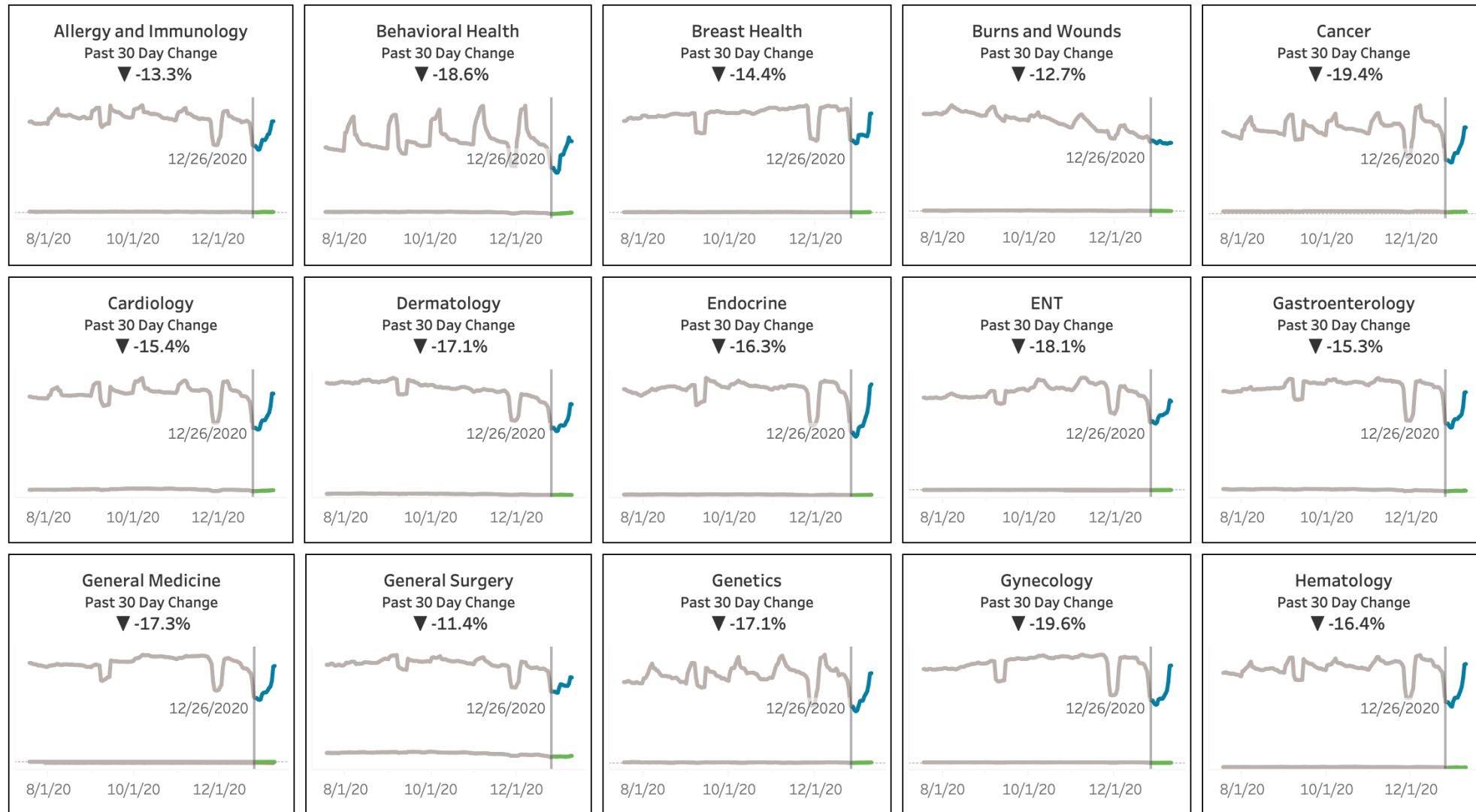
National Volume Changes by Service Line

Data as of 1/9/2021

Historical Data

Outpatient

Inpatient

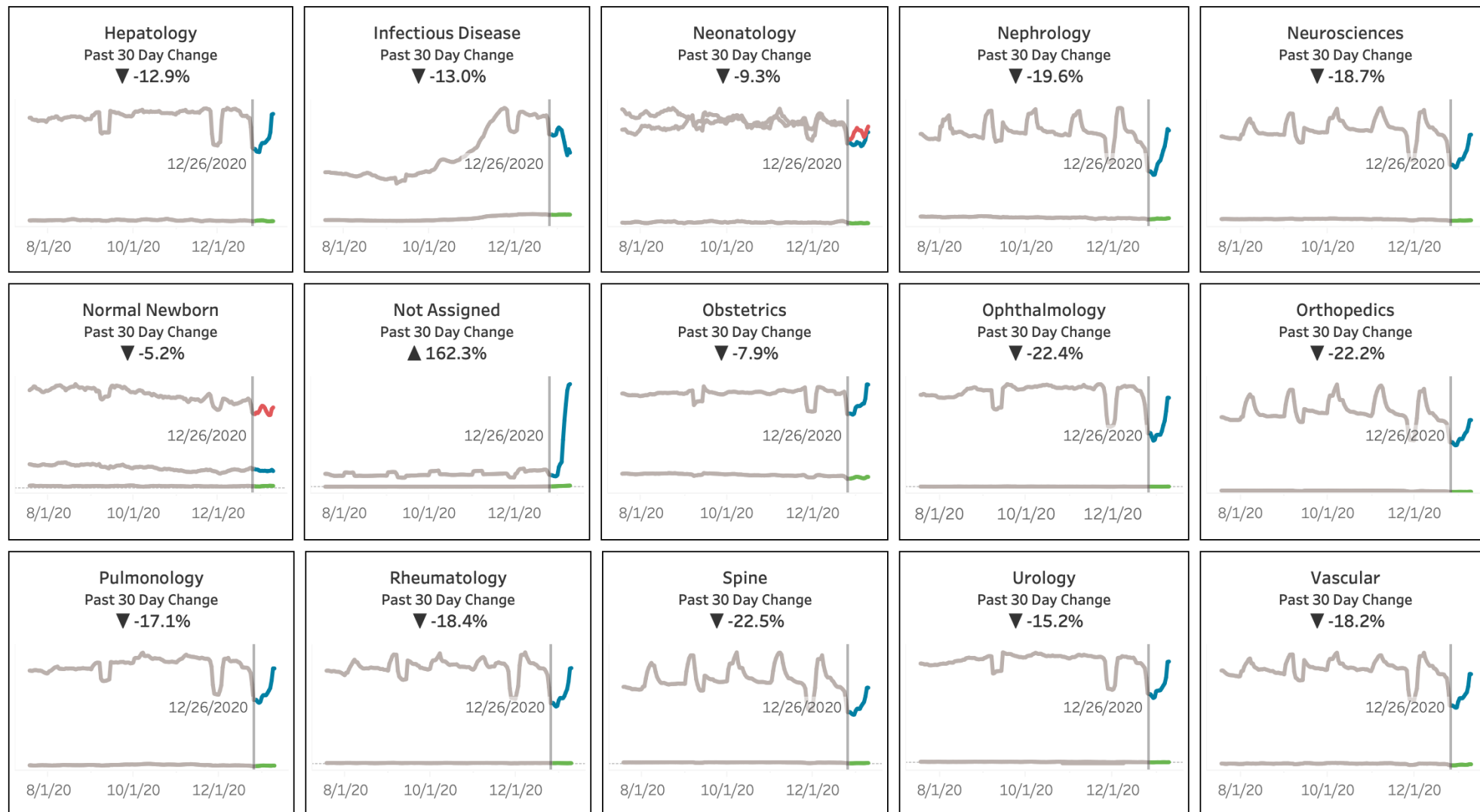


Section 7.2

National Volume Changes by Service Line

Data as of 1/9/2021

Historical Data
Inpatient
Newborn
Outpatient



Section 8

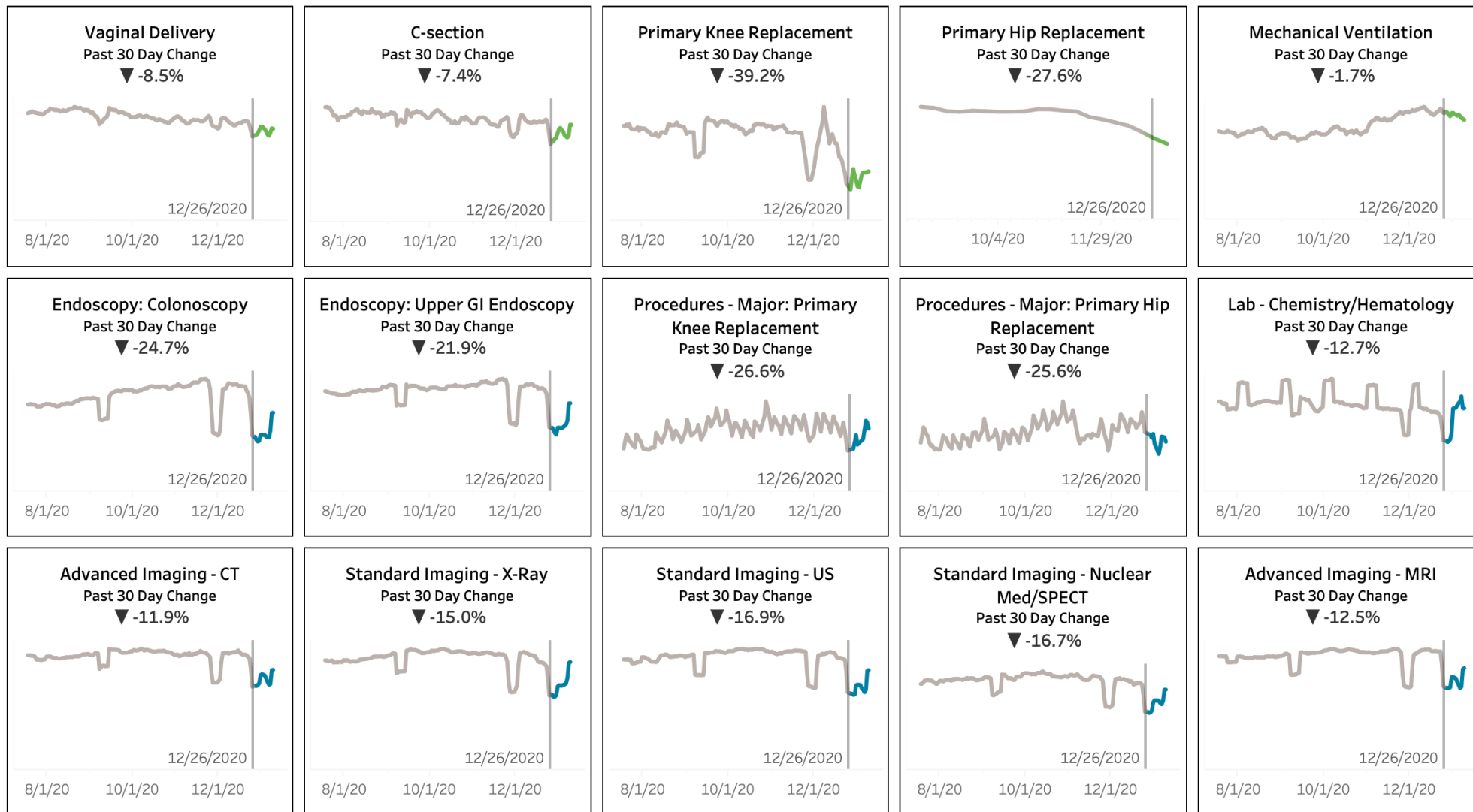
National Volume Changes by Procedure Type

Data as of 1/9/2021

Historical Data

Outpatient

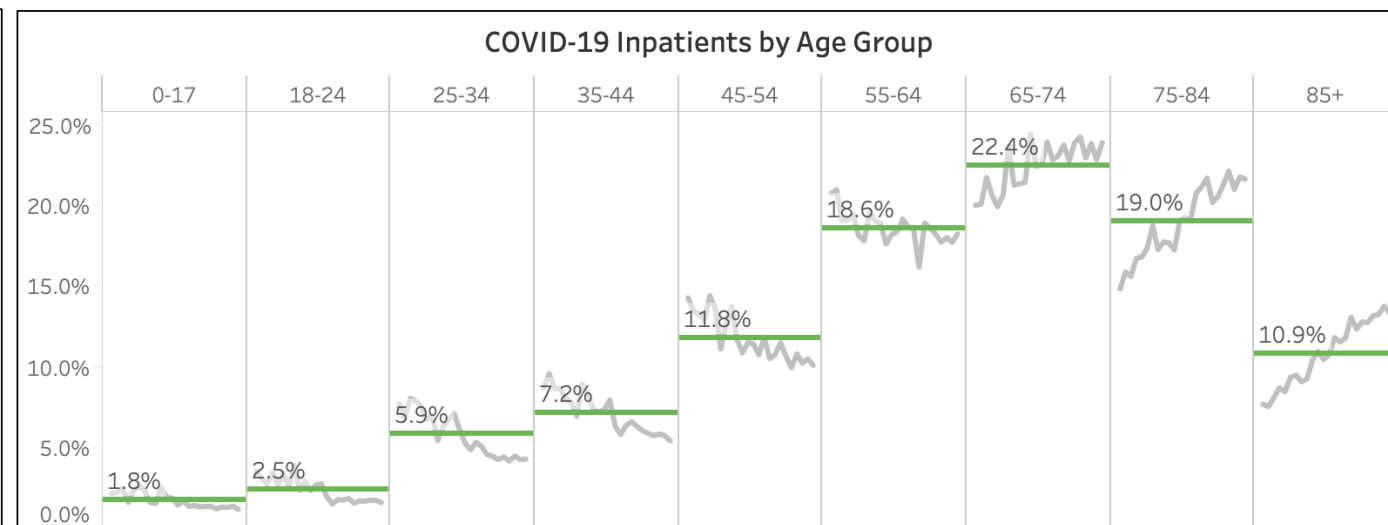
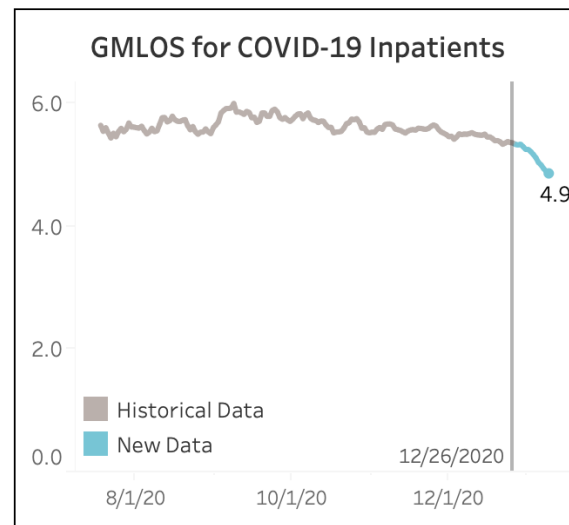
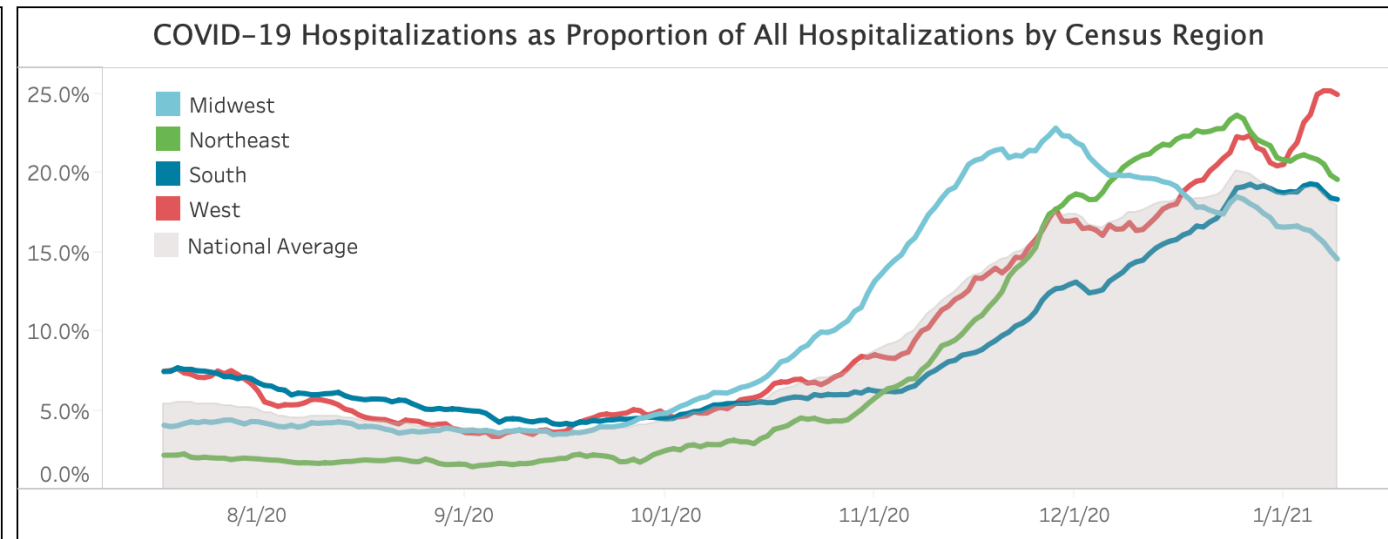
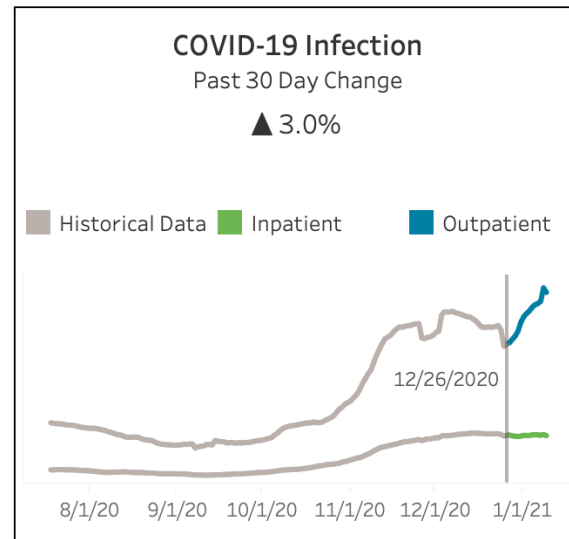
Inpatient



Section 9

COVID-19 Summary

Data as of 1/9/2021



Section 10

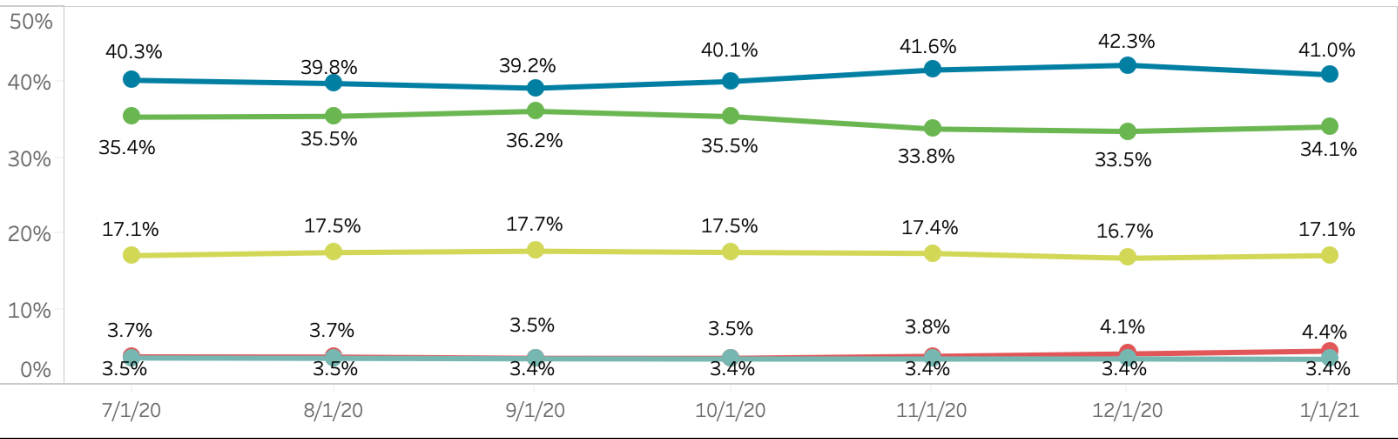
Payor Mix Monthly Analysis

Data as of 1/23/2021

Payor Mix is calculated based on encounter volume and the patient’s primary insurance plan.

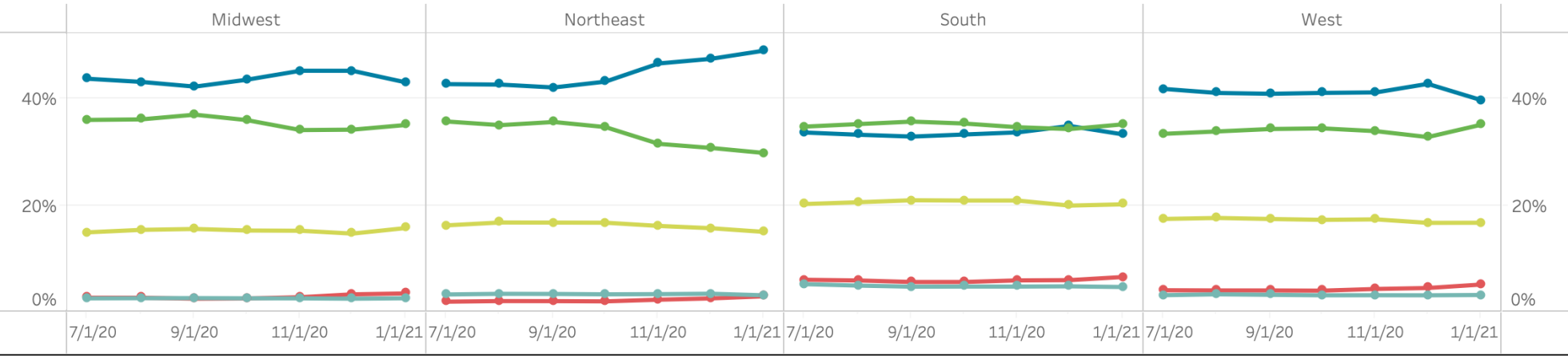
Nightly updates are received for encounter information. As providers validate or obtain insurance for patients it is added to the data set. We expect recent Self Pay numbers to be higher and to decrease over time as the insurance is updated.

Monthly Trend in Payor Mix Percentage to Total



Medicaid/Medicaid Managed Care Medicare/Medicare Managed Care Other Self Pay Private Health Insurance

Monthly Trend in Payor Mix Percentage to Total by Region



Methodology

Data Source: 70 StrataSphere® health systems with StrataJazz® Decision Support. All hospital billing encounters with nonzero charges were included. Once the encounter has charges greater than zero, it will then be included in the encounter count.

Patient Types include inpatient, observation patient, emergency patient, outpatient and newborn, which are determined by the presence of associated UB revenue codes in encounter charges.

Weekly change percentage is calculated by comparing current week patient volume with past 26 weeks rolling average volume.

Past 30 Day Change refers to the percentage difference between the sum encounter volume of the last 30 days of data, compared to the volume of the 30 days before that.

For the service line and procedure graphs: Service line and procedure groups provided by the Sg2 CARE Grouper™, based on the ICD-10 diagnosis and procedure codes, DRG codes, and CPT codes of each encounter.

For the COVID-19 summary graphs: COVID-19 infection status provided by the Sg2 CARE Grouper. Only encounters with ICD-10 diagnosis code U07.1 (indicating verified infection) are included.

GMLOS (Geometric mean length of stay) represents the nth root of the product of the LOS values for every COVID-19 inpatient admitted per day, where n is the number of patients per admit date. We chose this metric over average length of stay as it is less influenced by very high outliers.

For the payor mix analysis: the primary insurance plan is normalized by the StrataSphere machine learning payor model, encounters with a "not specified" payor are excluded.

Note: In the service line and procedure graphs observation and emergency patients are included in the outpatient volume for chart clarity.