

Section 1

Monthly National and Regional Volume Changes

Data as of 7/31/2025

WEST (n = 86)		
	from Previous Month	from Previous Year
Inpatient Admissions	▲ 2.9%	▲ 1.6%
Observation Visits	▲ 0.7%	▲ 2.2%
Emergency Visits	▲ 0.5%	▼ -1.4%
Outpatient Visits	▲ 3.9%	▲ 5.2%

NORTHEAST (n = 103)		
	from Previous Month	from Previous Year
Inpatient Admissions	▲ 4.6%	▲ 6.1%
Observation Visits	▼ -0.5%	▼ -5.7%
Emergency Visits	▼ -1.3%	▼ -4.4%
Outpatient Visits	▲ 3.4%	▲ 3.2%

MIDWEST (n = 245)		
	from Previous Month	from Previous Year
Inpatient Admissions	▲ 4.0%	▲ 2.5%
Observation Visits	▲ 0.8%	▼ -0.6%
Emergency Visits	▲ 0.8%	▼ -1.6%
Outpatient Visits	▲ 5.4%	▲ 7.8%

NATIONAL (n = 699)		
	from Previous Month	from Previous Year
Inpatient Admissions	▲ 3.8%	▲ 3.8%
Observation Visits	▲ 1.0%	▲ 0.0%
Emergency Visits	▲ 0.1%	▼ -2.0%
Outpatient Visits	▲ 4.7%	▲ 6.6%

SOUTH (n = 265)		
	from Previous Month	from Previous Year
Inpatient Admissions	▲ 3.8%	▲ 4.7%
Observation Visits	▲ 1.8%	▲ 2.2%
Emergency Visits	▼ -0.1%	▼ -1.6%
Outpatient Visits	▲ 5.0%	▲ 8.0%

Section 2.1

Inpatient Admissions  
Data as of 7/31/2025

2023 2025  
2024

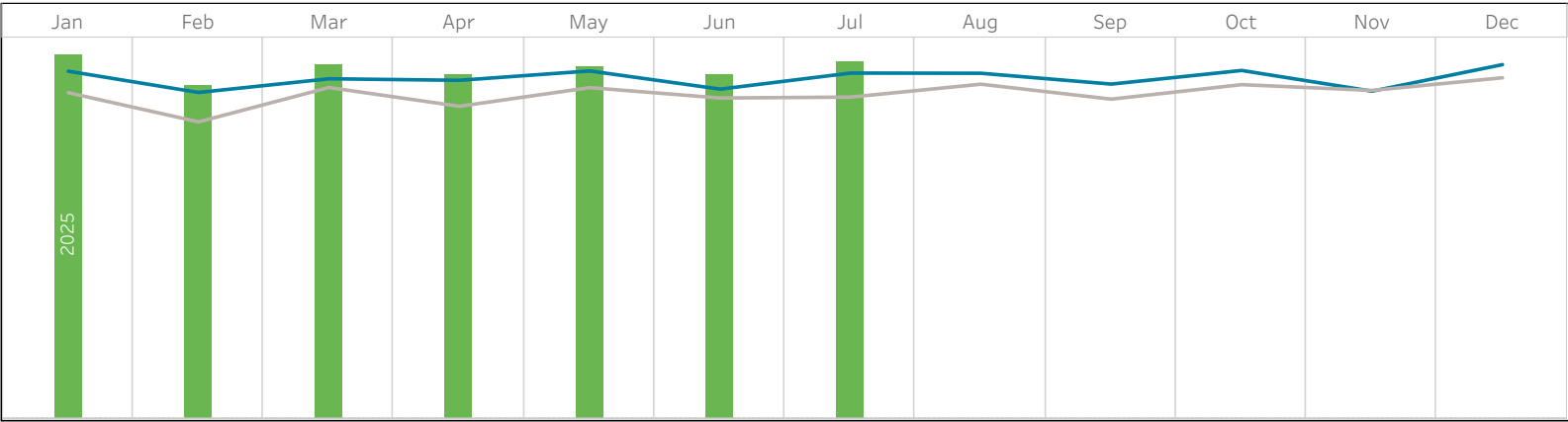
2025  
YTD Volumes

▲ 3.3%  
from 2024  
(n = 690)

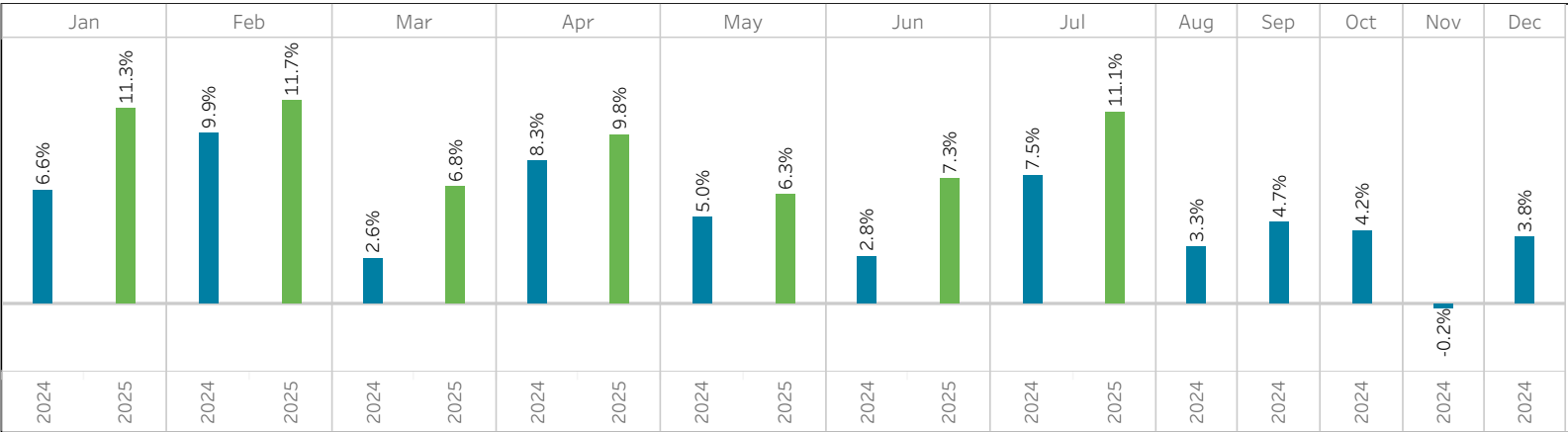
▲ 9.1%  
from 2023  
(n = 689)

▲ 15.4%  
from 2022  
(n = 661)

Monthly Volumes



Monthly Volume Changes Compared to 2023



Section 2.2

Outpatient Visits  
Data as of 7/31/2025

2023 2024 2025

2025  
YTD Volumes

▲ 5.3%  
from 2024  
(n = 690)

▲ 10.8%  
from 2023  
(n = 689)

▲ 13.3%  
from 2022  
(n = 661)



Section 3.1

National Volume Changes by Service Line (IP & OP)  
Data as of 6/30/2025

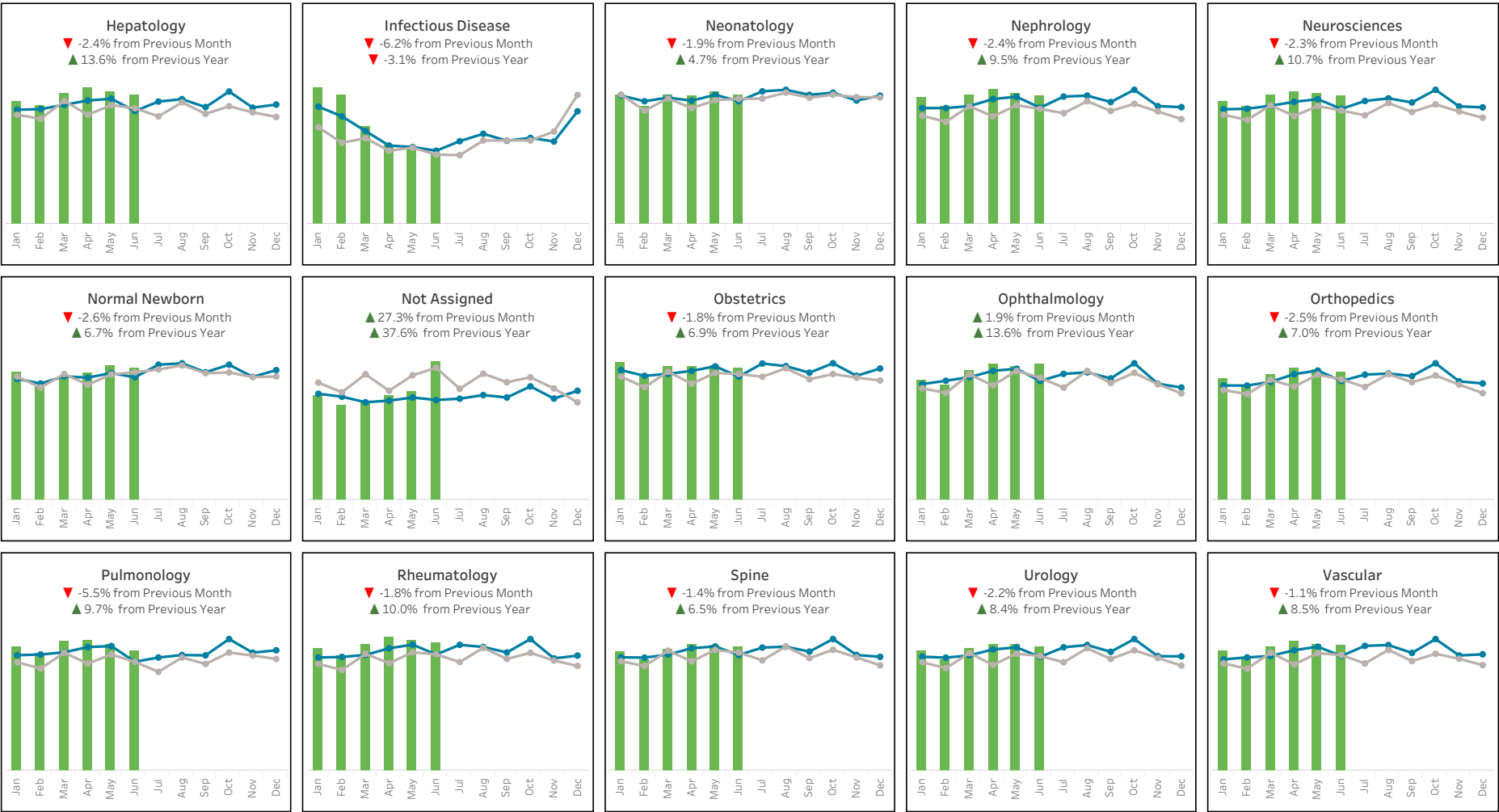
2023 2025  
2024



Section 3.2

National Volume Changes by Service Line (IP & OP)  
Data as of 6/30/2025

2023 2025  
2024



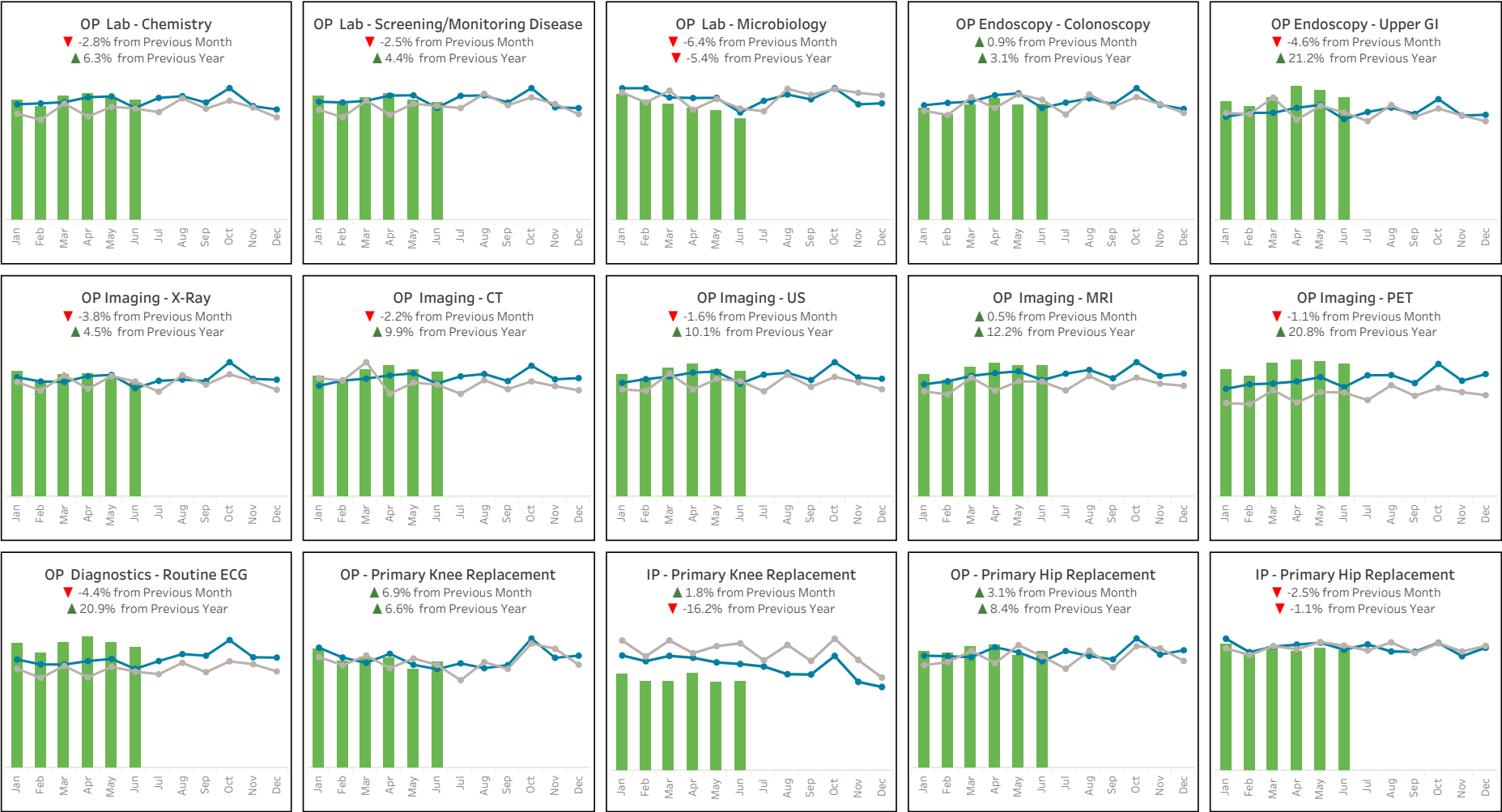
Section 4

National Volume Changes by Procedure Type

Data as of 6/30/2025

2023 2025

2024



Section 5.1

Children's Hospitals Recent Volume Changes

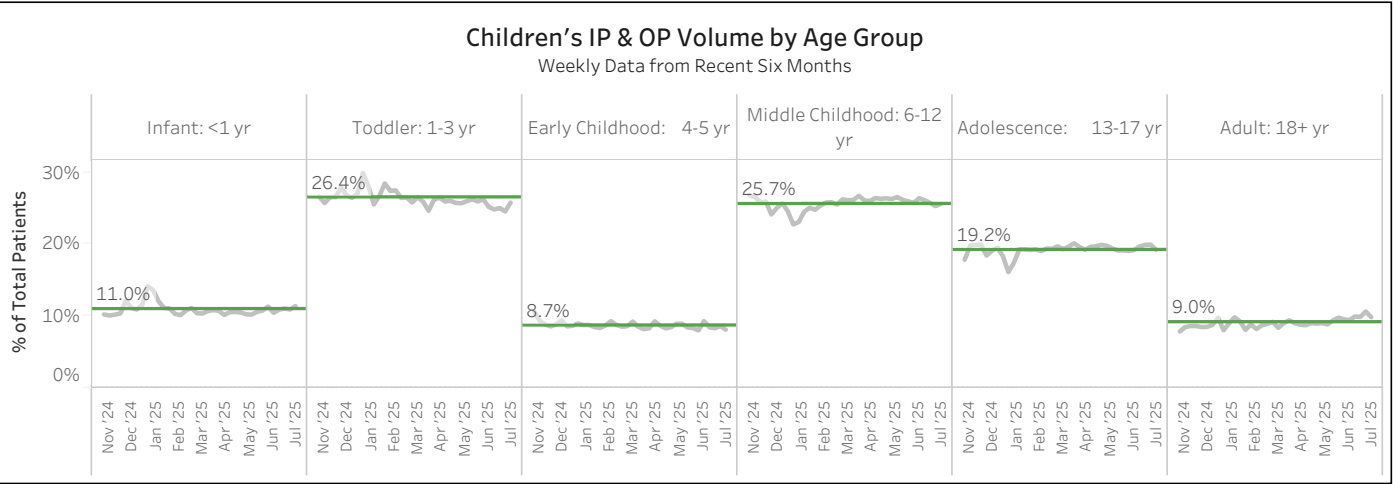
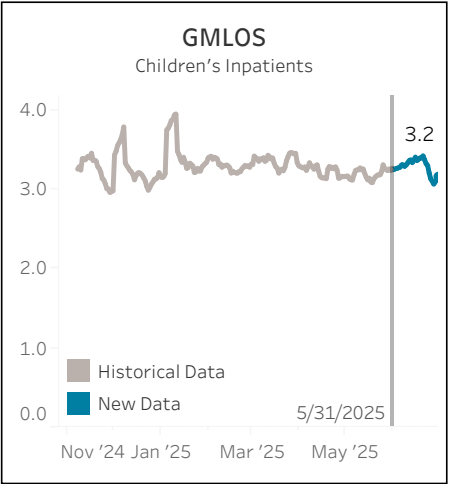
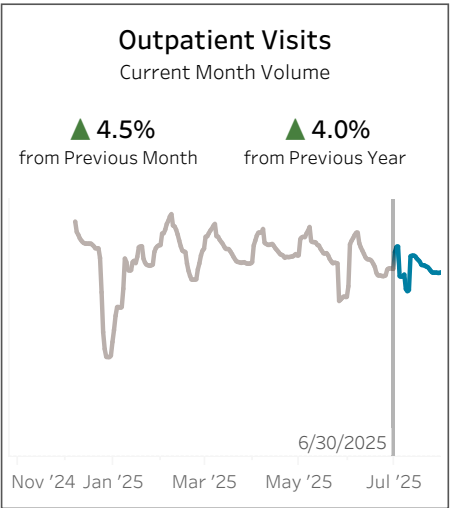
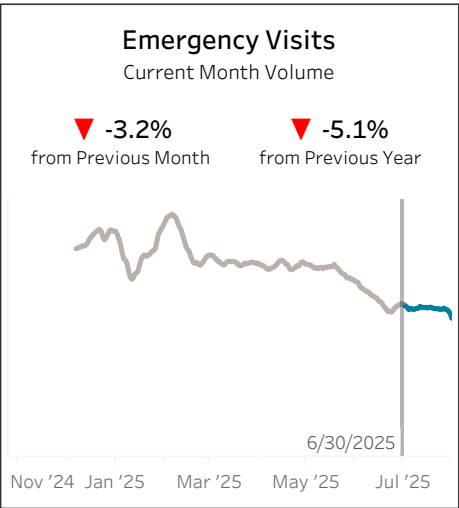
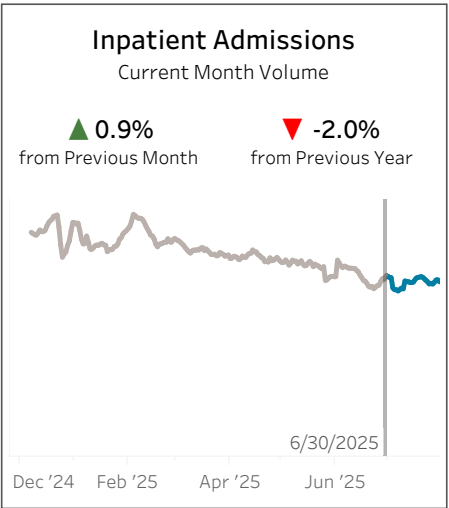
Data as of 7/31/2025

Childrens Hospital

21

Historical Data

New Data



## Methodology

Data Source: 699 hospitals from 141 StrataSphere® health systems with StrataJazz® Decision Support. Compared to last month, we have added 2 health systems and 8 hospitals. We also removed 2 health systems and 5 hospitals. All hospital billing encounters with nonzero charges were included. Once the encounter has charges greater than zero, it will then be included in the encounter count.

The census regions outlined in section 1 of this report follow the definitions established by the U.S. Census Bureau.

Patient Types include inpatient, observation, emergency, and outpatient, which are determined by the presence of associated UB revenue codes in encounter charges. We are only pulling encounters with charges greater than zero.

Percentage change from previous month refers to the percentage difference between the current month and previous month. Percentage change from previous year refers to the percentage difference between the current month and the same month in the previous year.

For sections 3.1-4: Service line and procedure groups are provided by the Sg2 CARE Grouper™, based on the ICD-10 diagnosis and procedure codes, DRG codes, and CPT codes of each encounter.

GMLOS (Geometric mean length of stay) represents the  $n$ th root of the product of the LOS values for every inpatient admitted per day, where  $n$  is the number of patients per admit date. We chose this metric over average length of stay as it is less influenced by very high outliers.