

This National Patient and Procedure Volume Tracker (NPPVT) report marks the first time a national holiday (Memorial Day) is in the data series which impacts both 2019 and 2020 trend data. Despite this, there are clear trends.

Year over year, Emergency and Observation volumes continue to be down double digit percentages while Inpatient Admissions are only slightly down. Outpatient visits are up nearly 20 percent for the last 30 days (through June 27th) versus the prior year with many service lines showing the same or better growth (through June 6th). The Outpatient increases slowed dramatically the last 14 days (which was after the holiday). The last 30 and 14 days show Admissions, Observation and Emergency are climbing with a large surge in the South (which includes Florida and Texas). Overall, the Outpatient visit surge shows up across service lines (through June 6th) which is good news for addressing the forgone care challenge. There is some resurgence in surgical procedures as well.

The data science team at Strata aggregated data from a cohort of 243 hospitals in 54 healthcare delivery systems. The breakdown of hospitals by U.S. Census Region is below.

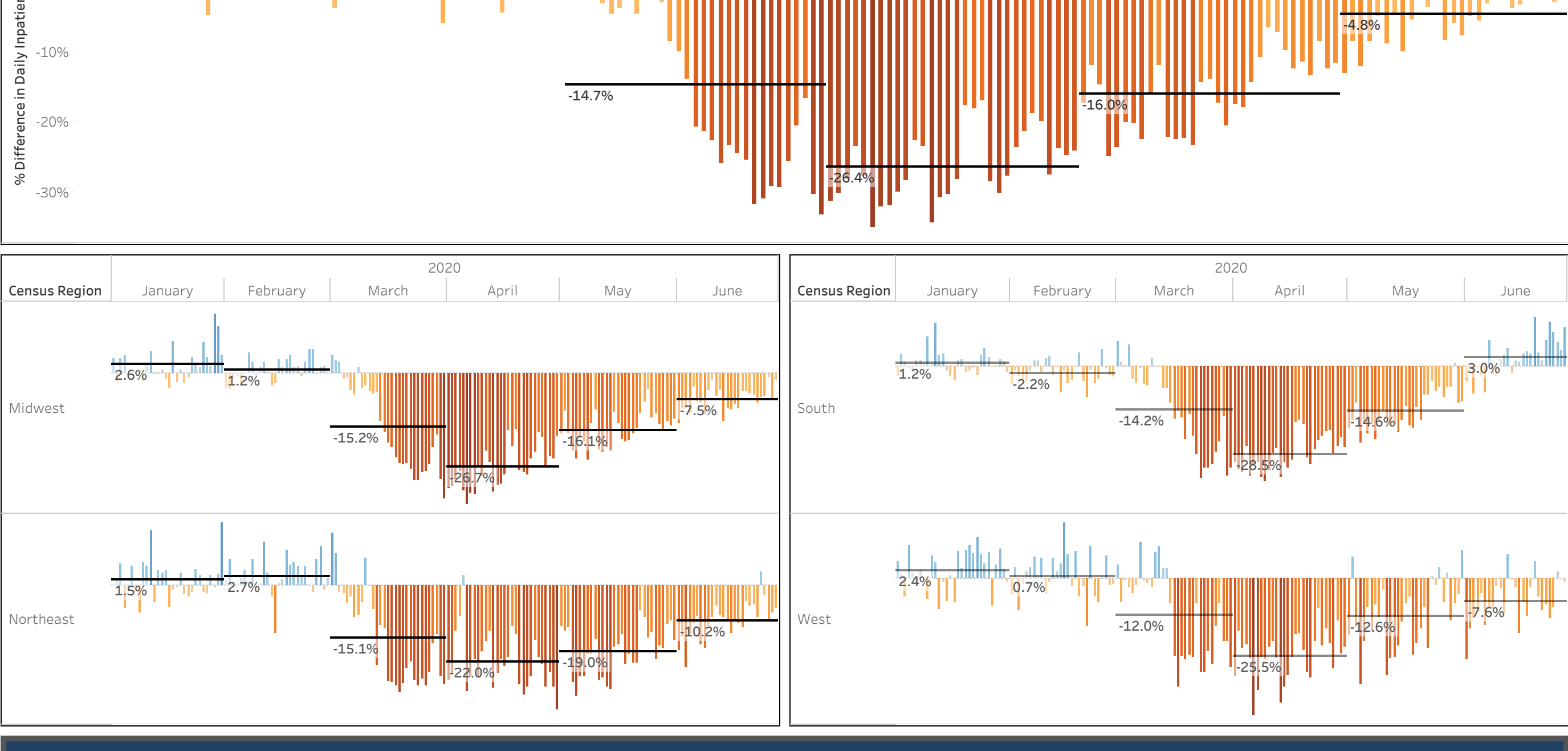
Census Region	Midwest	Northeast	South	West	Grand Total
	104	30	78	31	243

**Section 1 Admission Stays and Visits Recent Volume Changes** Data as of June 27, 2020

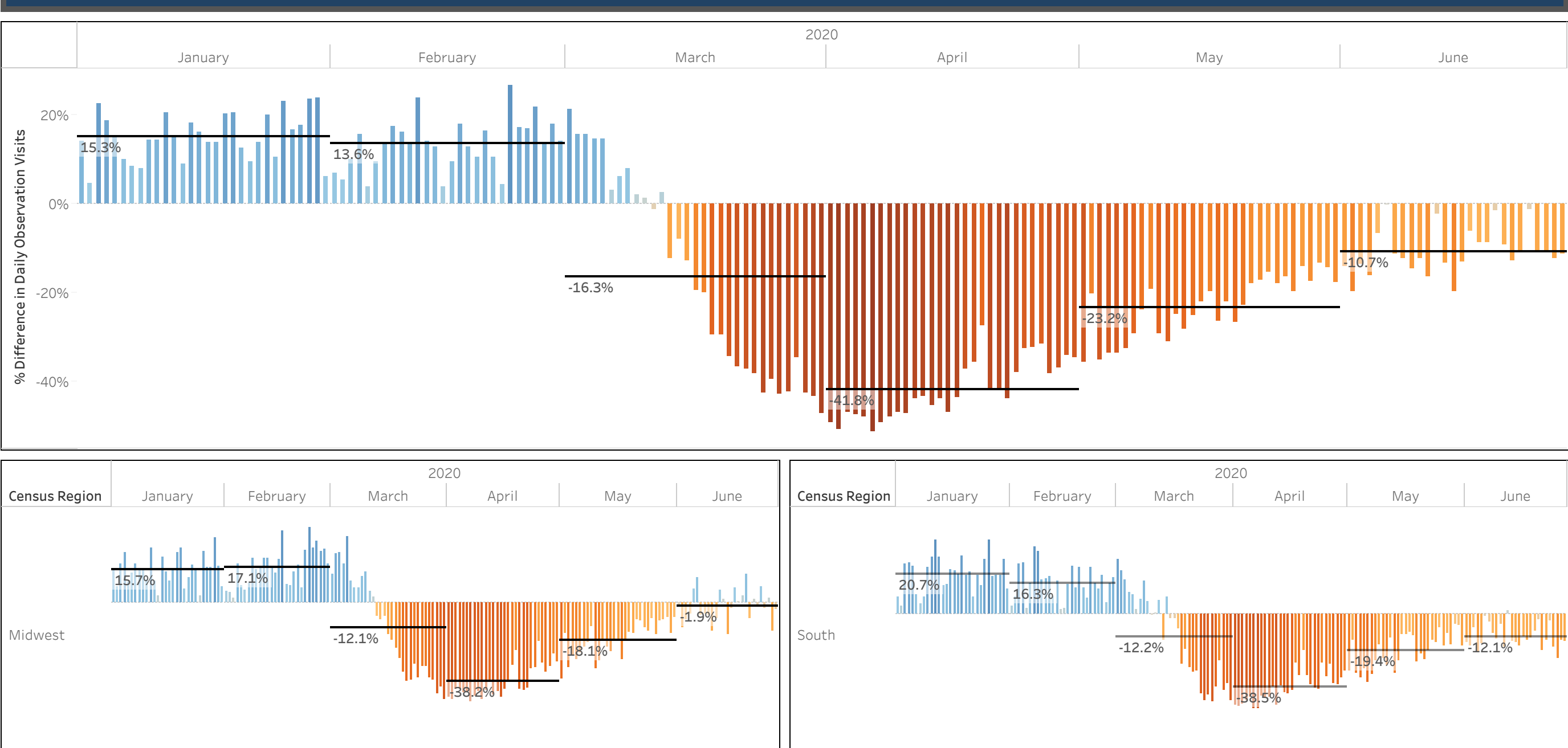
Daily Metric	30 Day Change Compare to 2019		14 Day Change Compare to 2019		Change in Last 30 Days		Change in Last 14 Days	
	%	Value	%	Value	%	Value	%	Value
Daily Inpatient Admissions	▼ 6.4%	-1,234	▼ 3.7%	-712	▲ 13.2%	2,543	▲ 18.2%	3,876
Daily Observation Visits	▼ 15.1%	-3,456	▼ 13.1%	-2,987	▲ 18.8%	4,123	▲ 28.4%	5,678
Daily Emergency Visits	▼ 22.4%	-5,678	▼ 19.8%	-4,901	▲ 19.5%	5,234	▲ 23.1%	6,789
Daily Outpatient Visits	▲ 13.4%	2,345	▲ 19.8%	4,567	▲ 29.4%	7,890	▲ 0.7%	1,234

Census Region	Metric	30 Day Change Compared to Same Period 2019	14 Day Change Compared to Same Period 2019	Census Region	Metric	Change in Last 30 Days	Change in Last 14 Days
Midwest	Daily Inpatient Admissions	▼ 8.4%	▼ 7.1%	Midwest	Daily Inpatient Admissions	▲ 9.7%	▲ 1.9%
	Daily Observation Visits	▼ 3.0%	▼ 0.5%		Daily Observation Visits	▲ 23.2%	▲ 6.4%
	Daily Emergency Visits	▼ 20.3%	▼ 17.8%		Daily Emergency Visits	▲ 18.8%	▲ 4.6%
	Daily Outpatient Visits	▲ 13.4%	▲ 19.0%		Daily Outpatient Visits	▲ 36.5%	▼ 4.2%
Northeast	Daily Inpatient Admissions	▼ 10.9%	▼ 7.8%	Northeast	Daily Inpatient Admissions	▲ 12.1%	▲ 4.4%
	Daily Observation Visits	▼ 26.4%	▼ 20.7%		Daily Observation Visits	▲ 24.9%	▲ 16.1%
	Daily Emergency Visits	▼ 33.5%	▼ 30.5%		Daily Emergency Visits	▲ 24.6%	▲ 7.2%
	Daily Outpatient Visits	▲ 17.2%	▲ 26.2%		Daily Outpatient Visits	▲ 28.1%	▲ 2.0%
South	Daily Inpatient Admissions	▲ 1.8%	▲ 6.6%	South	Daily Inpatient Admissions	▲ 22.1%	▲ 9.2%
	Daily Observation Visits	▼ 12.4%	▼ 13.7%		Daily Observation Visits	▲ 15.0%	▲ 2.3%
	Daily Emergency Visits	▼ 21.8%	▼ 19.6%		Daily Emergency Visits	▲ 19.4%	▲ 5.2%
	Daily Outpatient Visits	▲ 4.3%	▲ 9.1%		Daily Outpatient Visits	▲ 26.9%	▼ 1.0%
West	Daily Inpatient Admissions	▼ 8.0%	▼ 6.5%	West	Daily Inpatient Admissions	▲ 8.9%	▲ 2.7%
	Daily Observation Visits	▼ 18.6%	▼ 17.6%		Daily Observation Visits	▲ 12.0%	▲ 3.6%
	Daily Emergency Visits	▼ 14.0%	▼ 11.3%		Daily Emergency Visits	▲ 15.2%	▲ 5.1%
	Daily Outpatient Visits	▲ 18.5%	▲ 25.0%		Daily Outpatient Visits	▲ 26.2%	▲ 3.9%

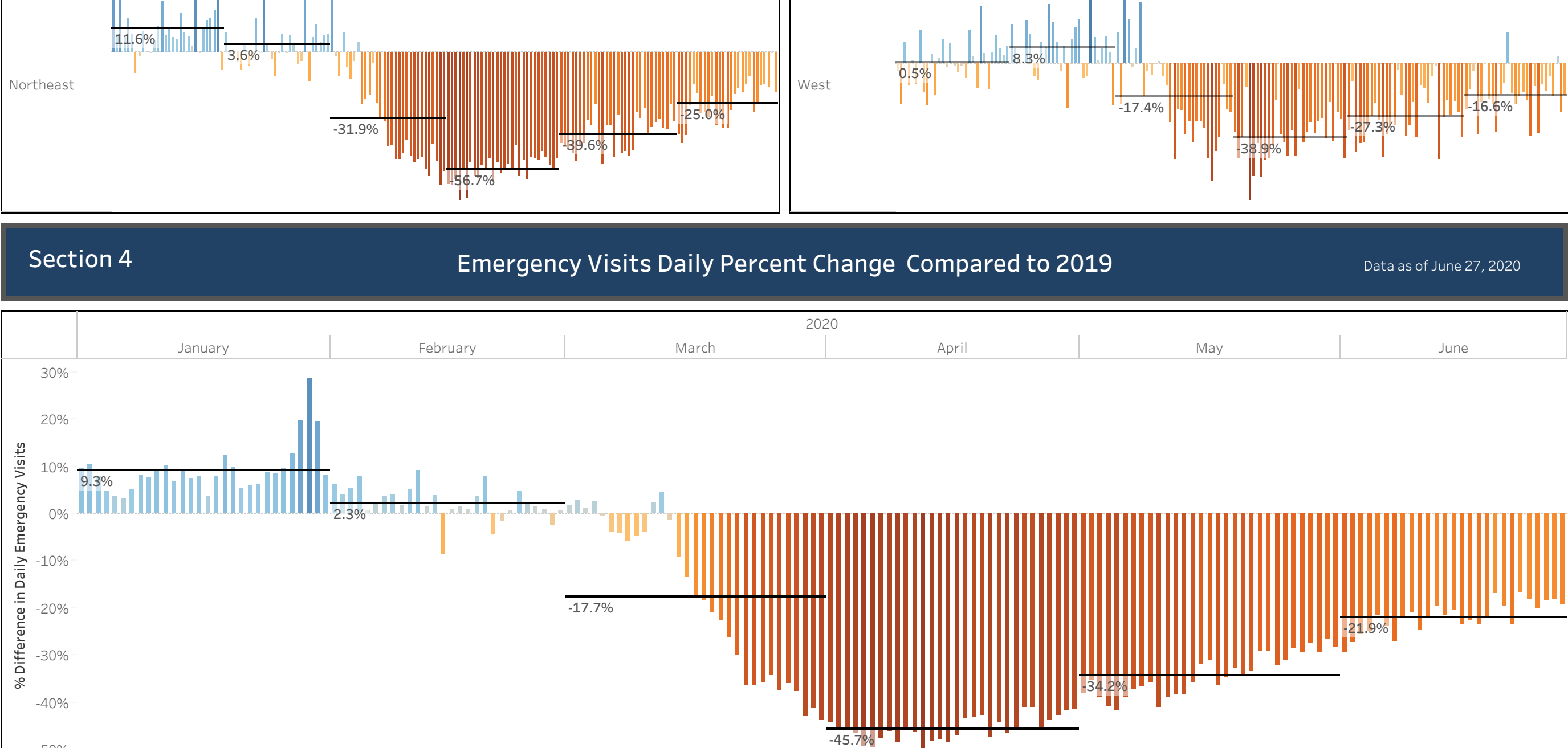
**Section 2 Inpatient Admissions Daily Percent Change Compared to 2019** Data as of June 27, 2020



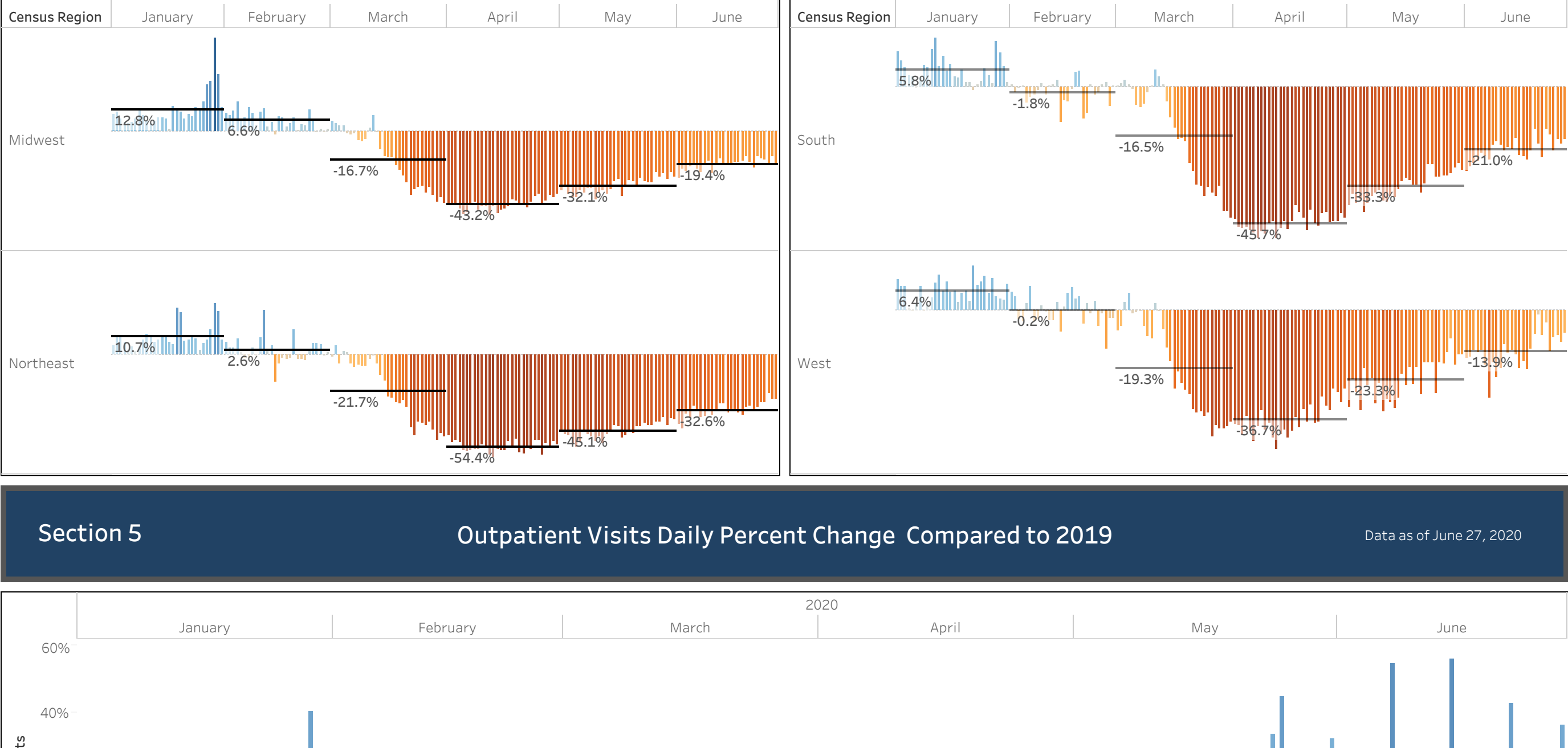
**Section 3 Observation Visits Daily Percent Change Compared to 2019** Data as of June 27, 2020



**Section 4 Emergency Visits Daily Percent Change Compared to 2019** Data as of June 27, 2020



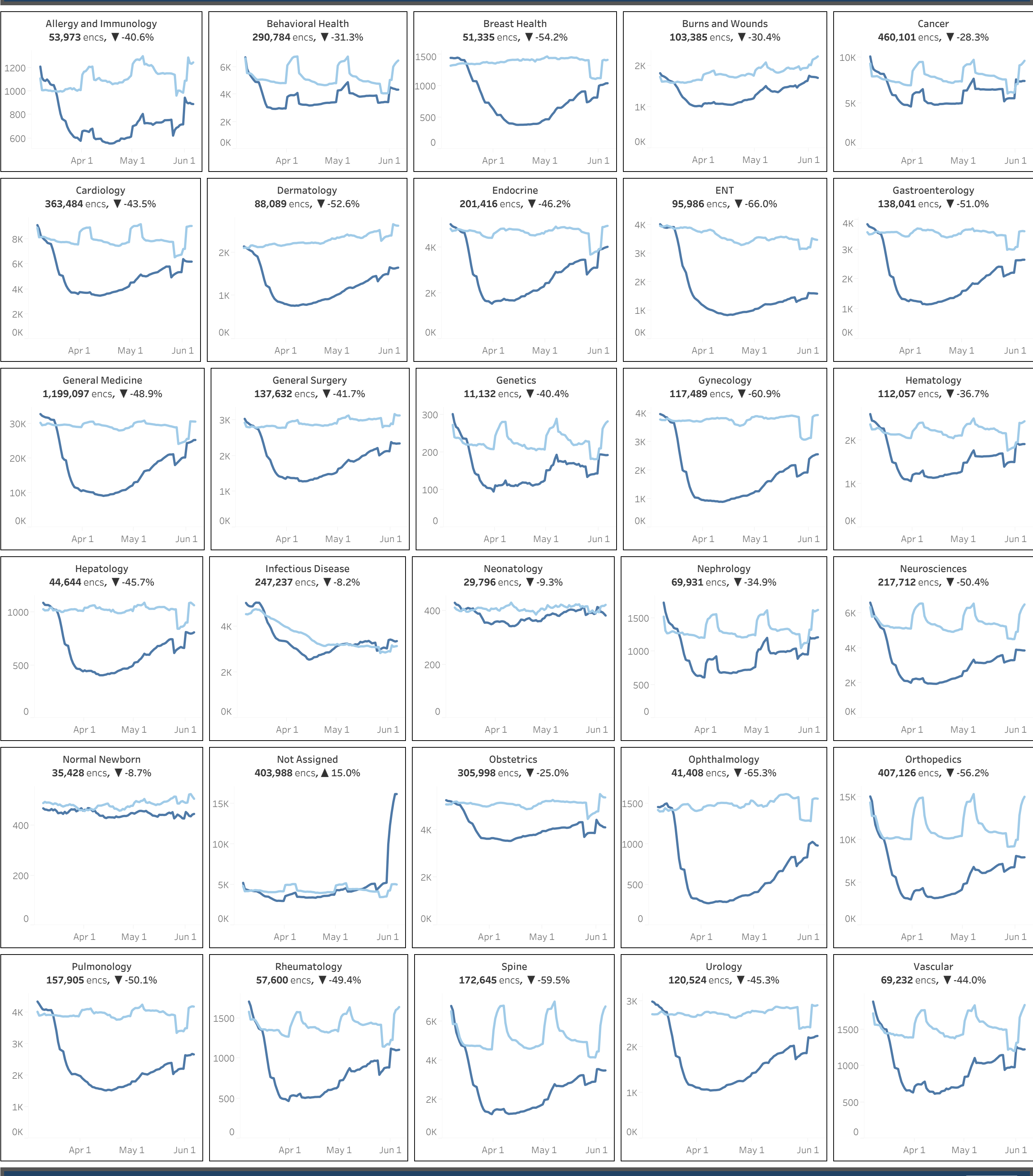
**Section 5 Outpatient Visits Daily Percent Change Compared to 2019** Data as of June 27, 2020



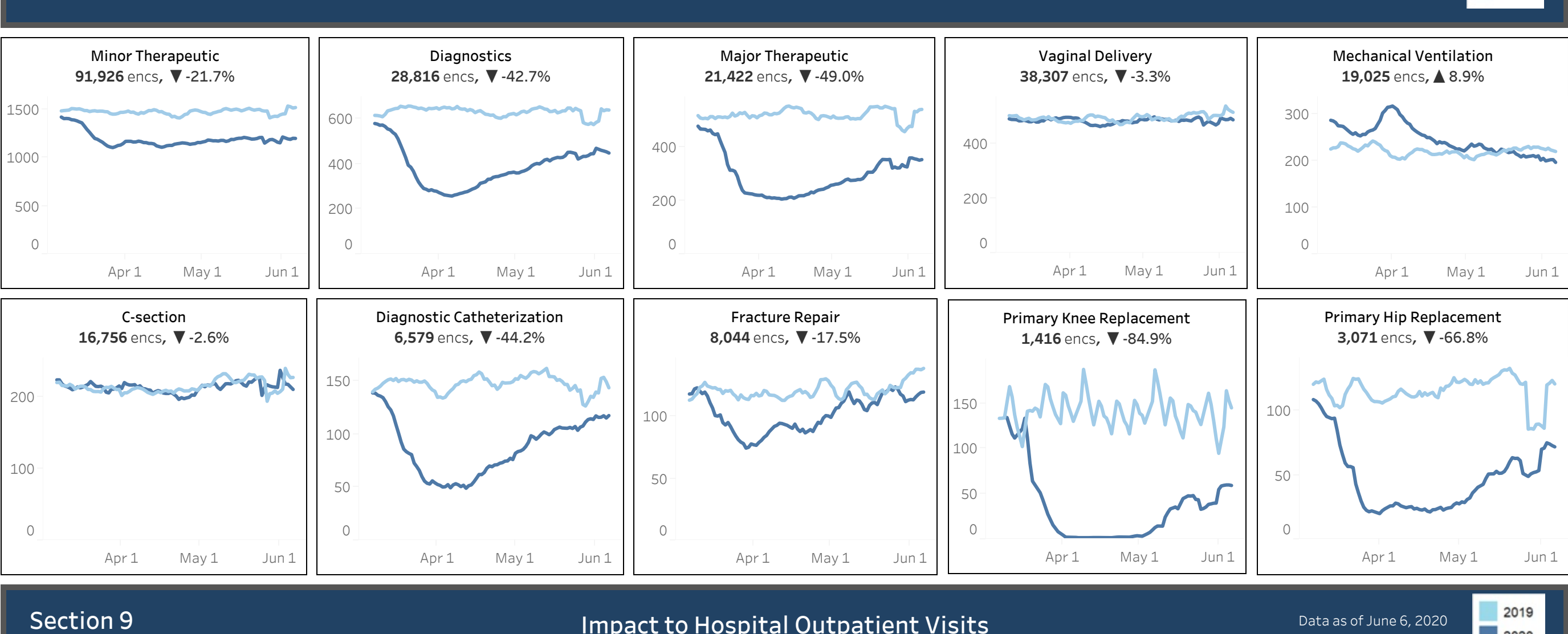
**Section 6 Sg2 Service Line Percent Change Last 14 Days** Data Compares Service Line Volume Changes for the weeks of 5/19-5/23/2020 to the weeks of 5/24-6/6/2020

Allergy and Immunology	▲ 24.2%
Behavioral Health	▲ 26.3%
Breast Health	▲ 27.9%
Burns and Wounds	▲ 5.2%
Cancer	▲ 34.1%
Cardiology	▲ 15.7%
Dermatology	▲ 9.9%
Endocrine	▲ 29.4%
ENT	▲ 11.9%
Gastroenterology	▲ 19.5%
General Medicine	▲ 25.0%
General Surgery	▲ 10.0%
Genetics	▲ 34.1%
Gynecology	▲ 33.1%
Hematology	▲ 27.3%
Hepatology	▲ 21.9%
Infectious Disease	▲ 9.7%
Neonatology	▼ -1.5%
Nephrology	▲ 26.7%
Neurosciences	▲ 16.8%
Normal Newborn	▲ 4.2%
Obstetrics	▲ 6.0%
Ophthalmology	▲ 17.8%
Orthopedics	▲ 17.3%
Pulmonology	▲ 20.5%
Rheumatology	▲ 24.8%
Spine	▲ 20.1%
Urology	▲ 20.0%
Vascular	▲ 25.0%

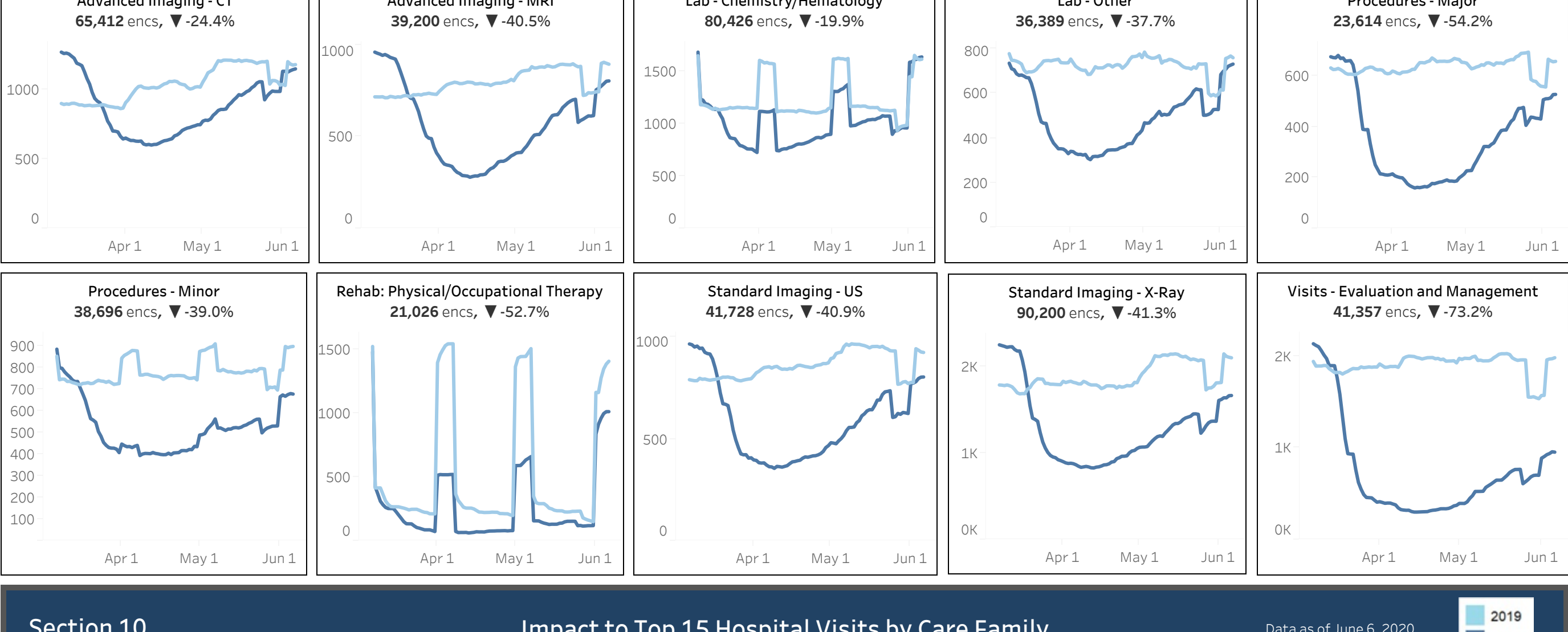
**Section 7 Volume Losses by Service Line 2019 vs 2020** Data as of June 6, 2020



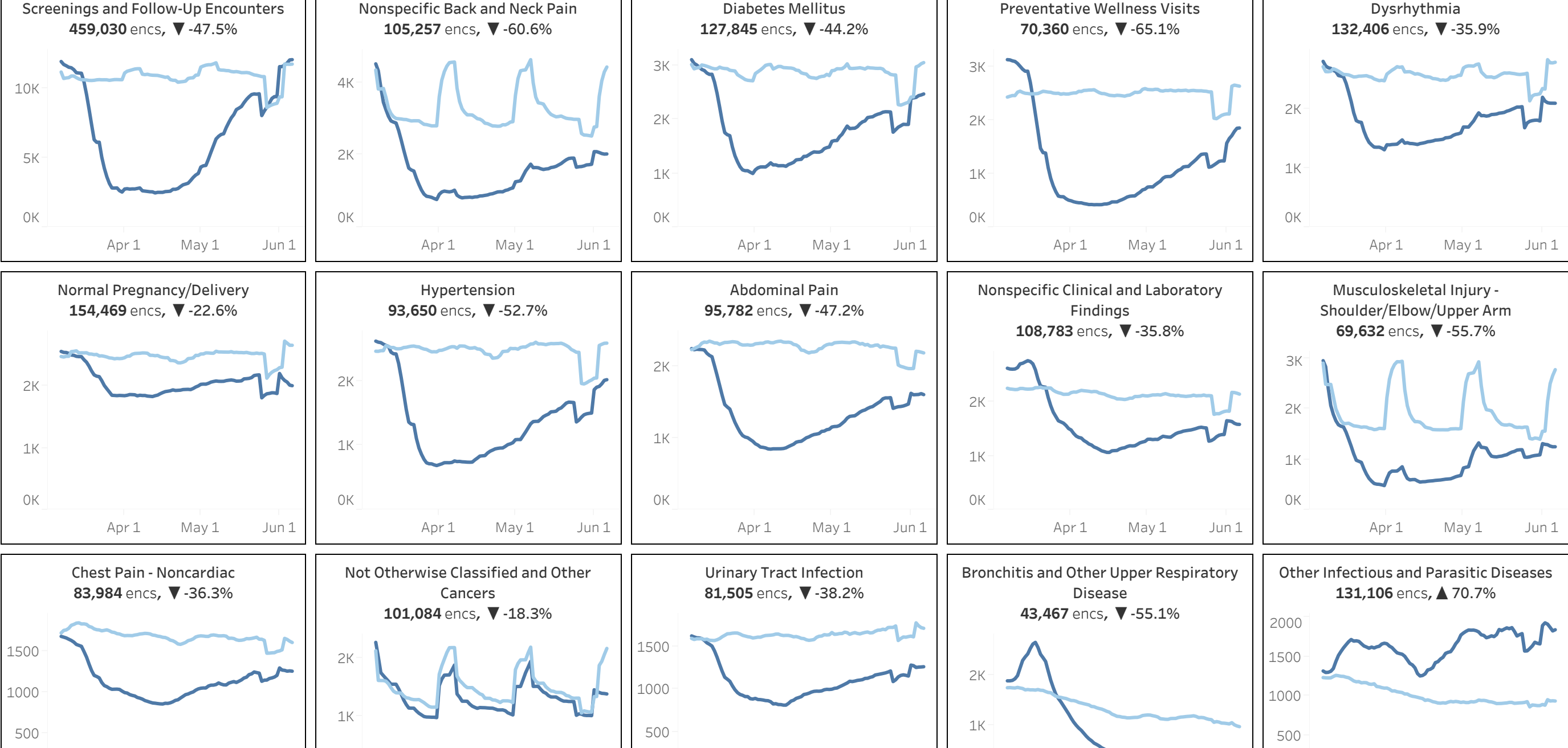
**Section 8 Impact to Inpatient Procedures and Surgeries** Data as of June 6, 2020



**Section 9 Impact to Hospital Outpatient Visits** Data as of June 6, 2020



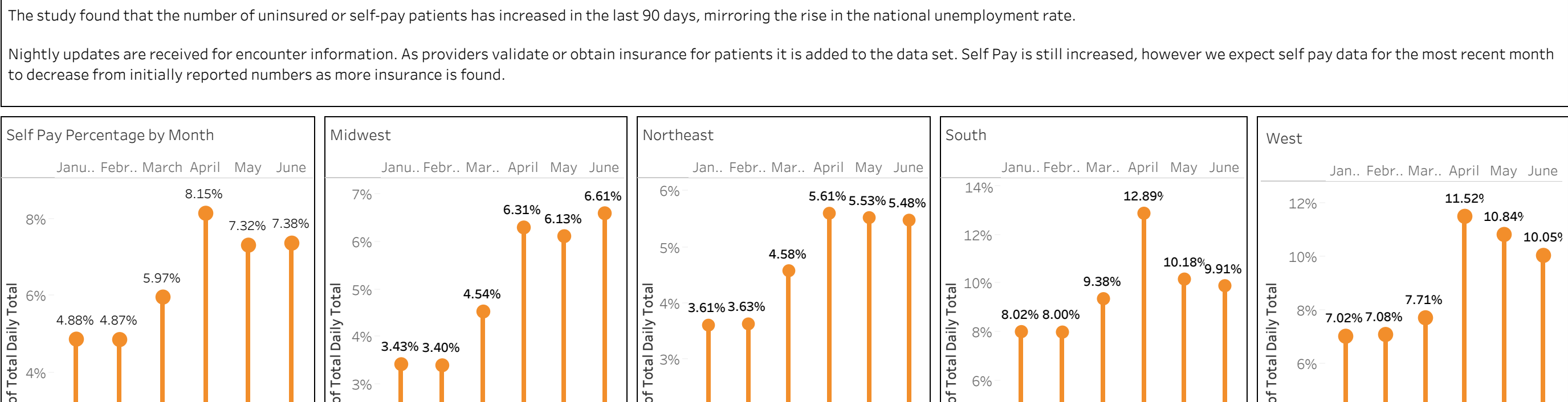
**Section 10 Impact to Top 15 Hospital Visits by Care Family** Data as of June 6, 2020



**Section 11 Increase in Self Pay and Uninsured** Data as of June 27, 2020

The study found that the number of uninsured or self-pay patients has increased in the last 90 days, mirroring the rise in the national unemployment rate.

Nightly updates are received for encounter information. As providers validate or obtain insurance for patients it is added to the data set. Self Pay is still increased, however we expect self pay data for the most recent month to decrease from initially reported numbers as more insurance is found.



**Data Source:** 54 StrataSphere health systems with decision support and valid costed encounter data available for both 2019 and 2020. Strata reviewed a total of 10 million encounters for matching timeframes in 2019 and 2020. All hospital billing encounters with nonzero charges were pulled.

**Analysis of volumes and payer source of admissions, observation stays, emergency room and hospital outpatient visits trends 2020 compared to 2019.**

**Data Processing:** The hospital billing encounter's primary insurance plan and financial class were analyzed to identify patients that did not have insurance.

**Methodology and Output:**

For all columns, data was aggregated by either service line or CARE family, and the metrics were calculated using the aggregate values.

The columns in the output were calculated as follows:

- Baseline encounters: Total number of encounters in the 2019 time frame.
- COVID era encounters: Total number of encounters in the 2020 time frame.
- Volume loss: Baseline encounters minus COVID era encounters.
- Percent volume loss: Volume loss divided by baseline encounters.