

This week's macro data on Admissions, Outpatient, ED and Observation ended on September 5th, Labor Day weekend. We hesitate to read too much into the trends but growth did stall and even drop some in August. Outpatient volume dropped dramatically but we believe it is related to the holiday.

The detailed service line data, through August 15th, is somewhat alarming due to the uptick in Infectious Disease cases, likely all COVID-19. We continue to see hips and knees and many other procedural areas stay below 2019 levels. It is unclear if a new level of review on the necessity of procedures vs. the risk of exposure is at play here.

The data science team at Strata aggregated data from a cohort of 275 hospitals in 58 healthcare delivery systems. The breakdown of hospitals by U.S. Census Region is below.

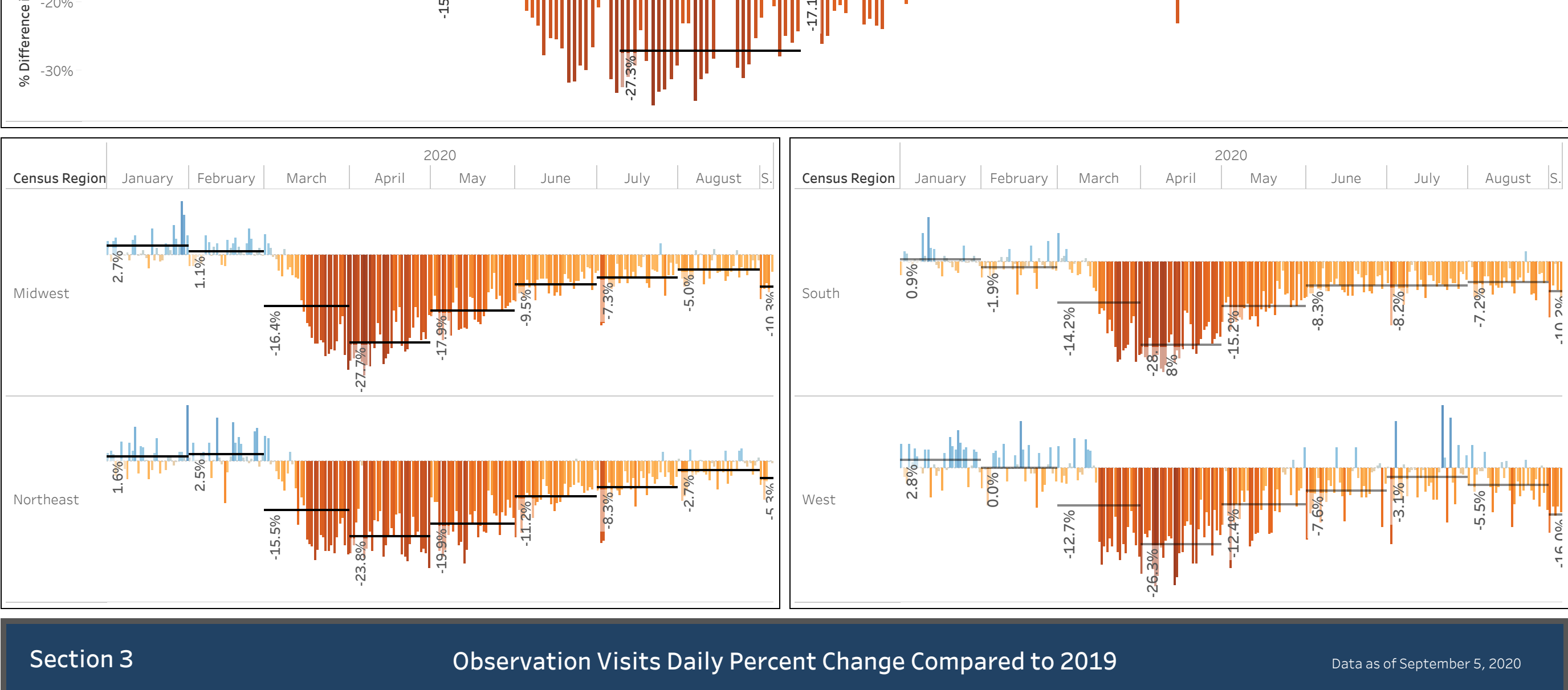
We have made a methodology change and are only reporting volume related to short term acute care hospitals. Previous reports included Behavioral Health, LTAC, Rehab and other types of standalone facilities that were part of larger health systems. This change will be seen mostly in the service line volume data as some of the overall counts will be decreased from previous reports. Although counts may be lower, overall trends have not changed.

Census Region	Midwest	Northeast	South	West	Grand Total
	110	35	95	35	275

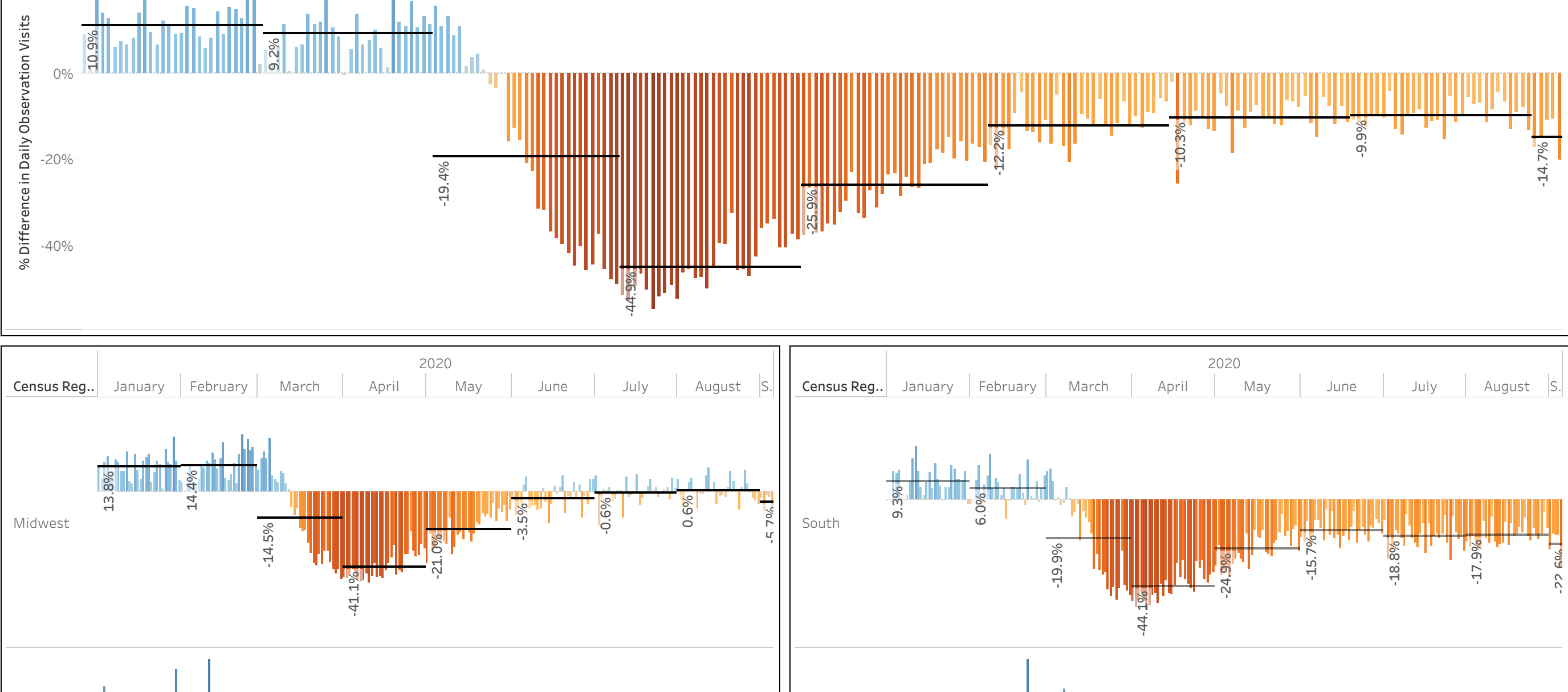
Section 1 Admission Stays and Visits Recent Volume Changes Data as of September 5, 2020

Census Region	Metric	30 Day Change Compare to 2019		14 Day Change Compare to 2019		Change in Last 30 Days		Change in Last 14 Days	
		%	%	%	%	%	%	%	%
Midwest	DailyInpatientAdmissions	▼6.3%	▼7.0%	▼0.7%	▼1.3%	▼1.5%	▼7.6%	▼0.7%	▼1.3%
	DailyObservationVisits	▼13.3%	▼13.9%	▲0.2%	▼2.1%	▼2.4%	▼2.7%	▼2.4%	▼2.7%
	DailyEmergencyVisits	▼20.4%	▼21.5%	▼18.7%	▼19.9%	▼1.0%	▼1.7%	▼1.0%	▼1.7%
	DailyOutpatientVisits	▼1.5%	▼5.9%	▲2.0%	▼2.7%	▼6.6%	▼1.8%	▼6.6%	▼1.8%
Northeast	DailyInpatientAdmissions	▼2.9%	▼2.5%	▼2.9%	▼2.5%	▲0.7%	▼0.8%	▲0.7%	▼0.8%
	DailyObservationVisits	▼13.9%	▼12.2%	▼23.3%	▼23.4%	▲0.1%	▼2.1%	▲0.1%	▼2.1%
	DailyEmergencyVisits	▼2.9%	▼2.4%	▲0.7%	▼2.4%	▼2.9%	▼2.1%	▼2.9%	▼2.1%
	DailyOutpatientVisits	▼3.2%	▼8.5%	▼3.2%	▼8.5%	▼4.5%	▼2.2%	▼4.5%	▼2.2%
South	DailyInpatientAdmissions	▼22.1%	▼22.4%	▼22.1%	▼22.4%	▼1.6%	▼0.4%	▼1.6%	▼0.4%
	DailyObservationVisits	▼4.6%	▼9.0%	▼4.6%	▼9.0%	▼5.6%	▼7.4%	▼5.6%	▼7.4%
	DailyEmergencyVisits	▼8.5%	▼10.6%	▼8.5%	▼10.6%	▼4.3%	▼3.3%	▼4.3%	▼3.3%
	DailyOutpatientVisits	▼21.4%	▼20.2%	▼17.4%	▼20.2%	▼3.1%	▼1.3%	▼3.1%	▼1.3%
West	DailyInpatientAdmissions	▼4.1%	▼9.6%	▼4.1%	▼9.6%	▼9.3%	▼1.0%	▼9.3%	▼1.0%
	DailyObservationVisits	▼4.1%	▼9.6%	▼4.1%	▼9.6%	▼9.3%	▼1.0%	▼9.3%	▼1.0%
	DailyEmergencyVisits	▼4.1%	▼9.6%	▼4.1%	▼9.6%	▼9.3%	▼1.0%	▼9.3%	▼1.0%
	DailyOutpatientVisits	▼4.1%	▼9.6%	▼4.1%	▼9.6%	▼9.3%	▼1.0%	▼9.3%	▼1.0%

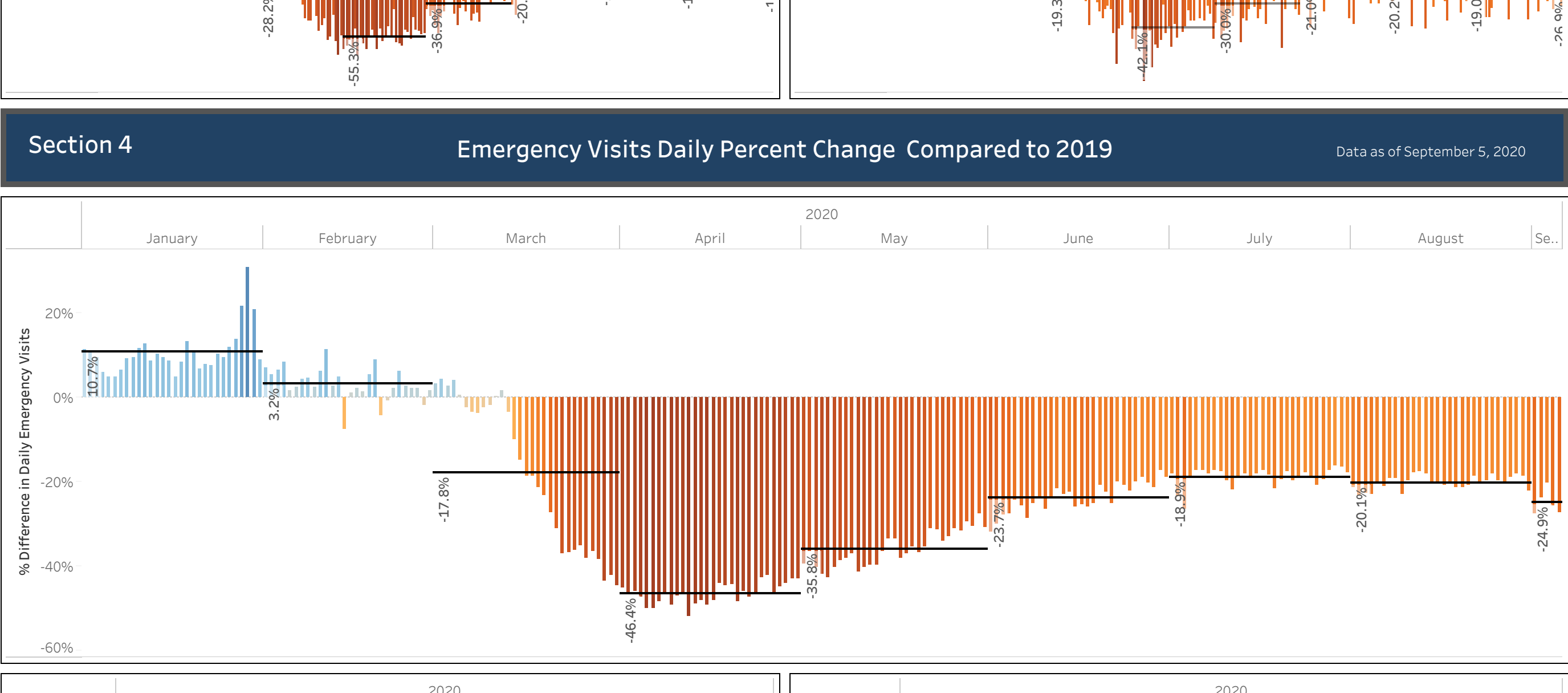
Section 2 Inpatient Admissions Daily Percent Change Compared to 2019 Data as of September 5, 2020



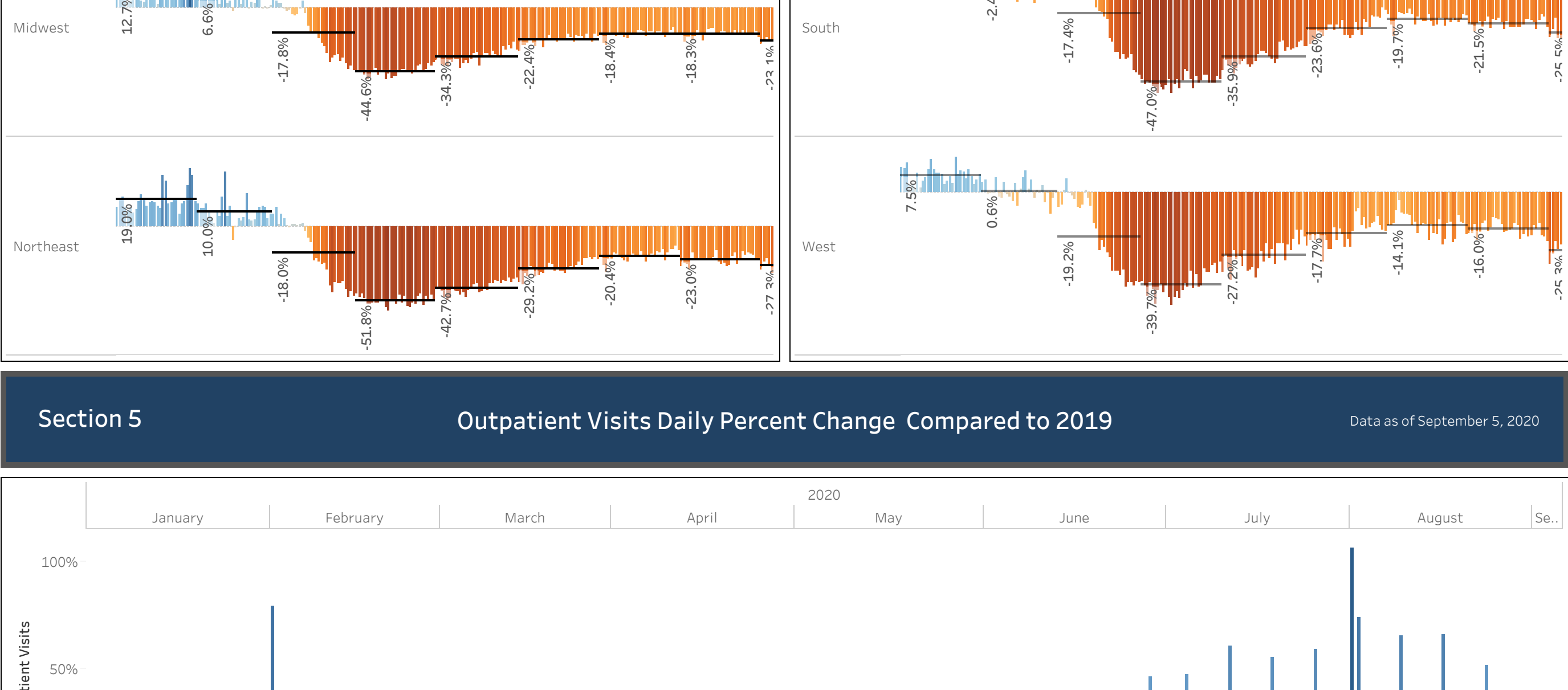
Section 3 Observation Visits Daily Percent Change Compared to 2019 Data as of September 5, 2020



Section 4 Emergency Visits Daily Percent Change Compared to 2019 Data as of September 5, 2020



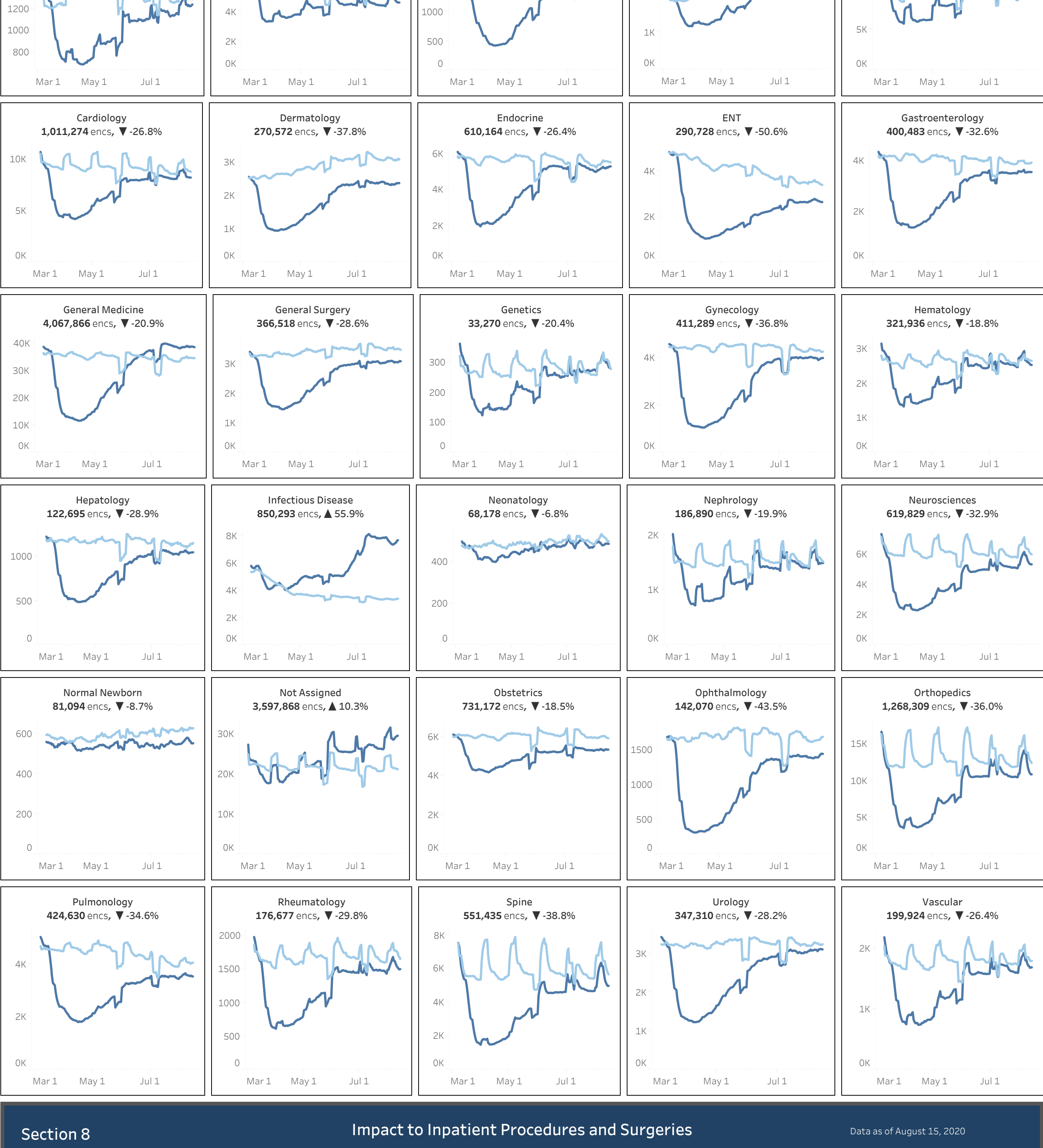
Section 5 Outpatient Visits Daily Percent Change Compared to 2019 Data as of September 5, 2020



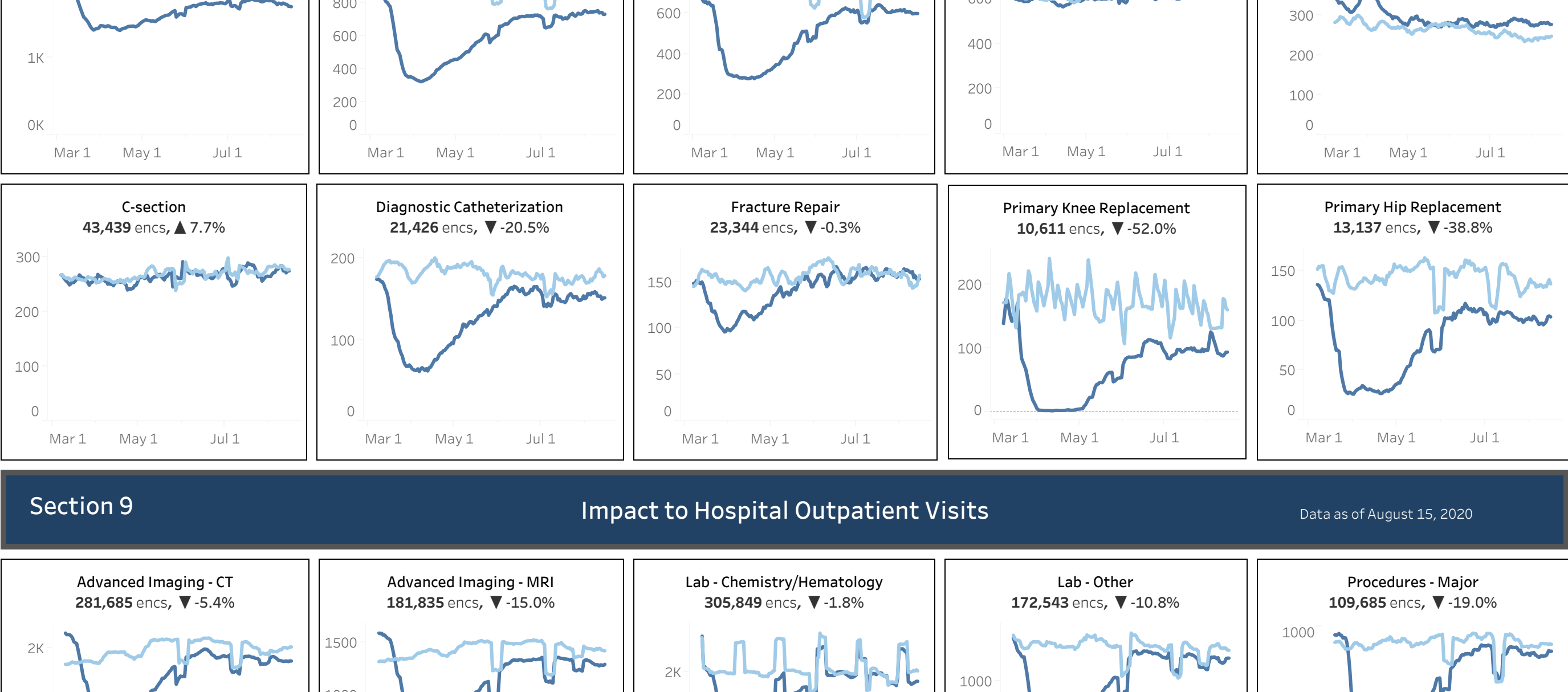
Section 6 Sg2 Service Line Percent Change Last 14 Days Data Compares Service Line Volume Changes for the weeks of 7/17-7/31/2020 to the weeks of 8/1-8/15/2020

Allergy and Immunology	▲0.2%	Hepatology	▲0.0%
Behavioral Health	▼8.5%	Infectious Disease	▲3.8%
Breast Health	▼0.9%	Neonatology	▲1.6%
Burns and Wounds	▼5.9%	Nephrology	▼3.4%
Cancer	▼7.8%	Neurosciences	▼10.1%
Cardiology	▼5.5%	Normal Newborn	▼4.7%
Dermatology	▲2.0%	Obstetrics	▲0.1%
Endocrine	▲1.8%	Ophthalmology	▲3.6%
ENT	▼3.9%	Orthopedics	▼20.6%
Gastroenterology	▲0.4%	Pulmonology	▼1.5%
General Medicine	▼0.5%	Rheumatology	▼7.6%
General Surgery	▲1.4%	Spine	▼19.1%
Genetics	▼8.8%	Urology	▲0.3%
Gynecology	▲0.3%	Vascular	▼6.4%
Hematology	▼5.2%		

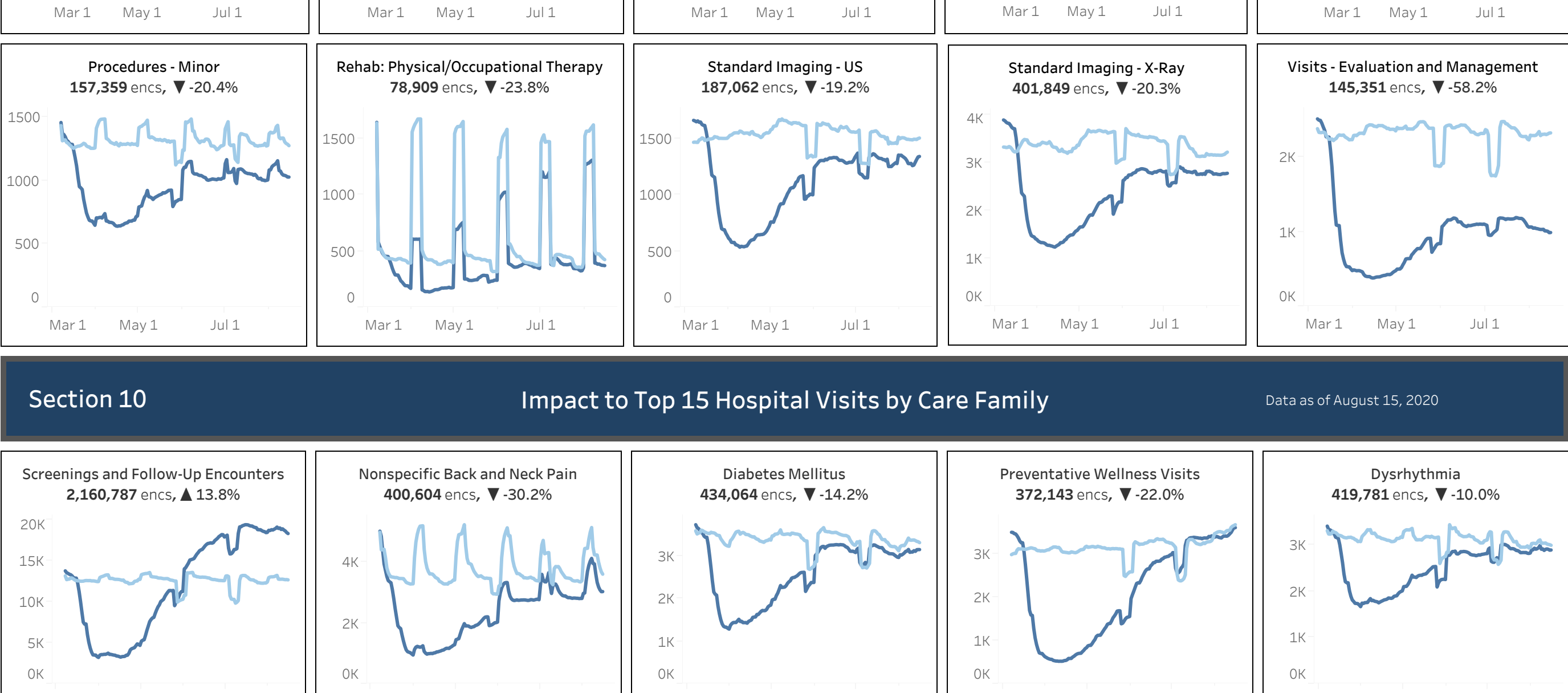
Section 7 Volume Losses by Service Line 2019 vs 2020 Data as of August 15, 2020



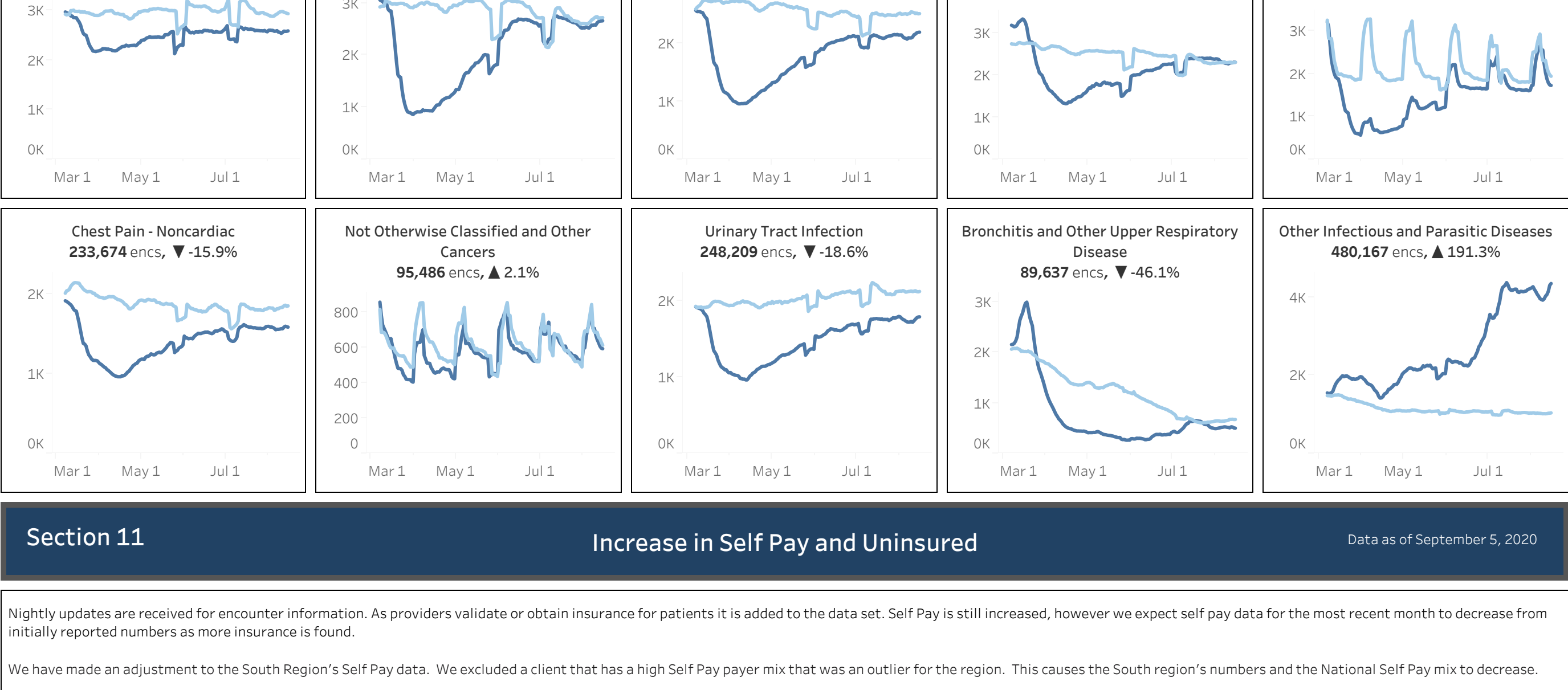
Section 8 Impact to Inpatient Procedures and Surgeries Data as of August 15, 2020



Section 9 Impact to Hospital Outpatient Visits Data as of August 15, 2020



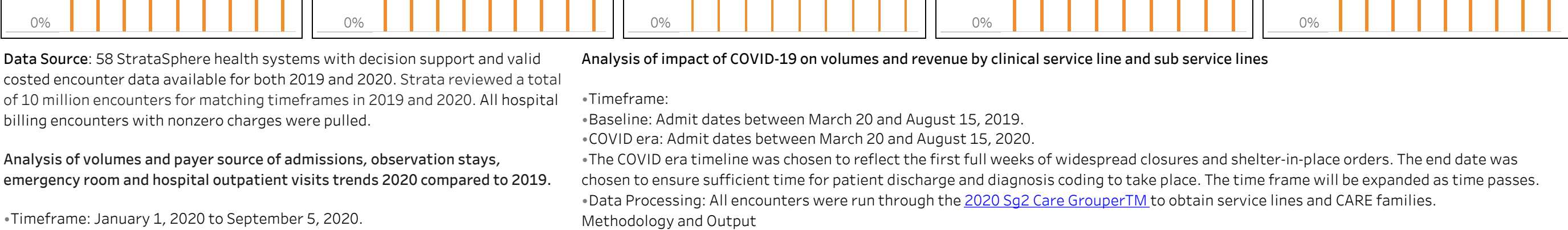
Section 10 Impact to Top 15 Hospital Visits by Care Family Data as of August 15, 2020



Section 11 Increase in Self Pay and Uninsured Data as of September 5, 2020

Nightly updates are received for encounter information. As providers validate or obtain insurance for patients it is added to the data set. Self Pay is still increased, however we expect self pay data for the most recent month to decrease from initially reported numbers as more insurance is found.

We have made an adjustment to the South Region's Self Pay data. We excluded a client that has a high Self Pay payer mix that was an outlier for the region. This causes the South region's numbers and the National Self Pay mix to decrease.



Data Source: 58 StrataSphere health systems with decision support and valid costed encounter data available for both 2019 and 2020. Strata reviewed a total of 10 million encounters for matching timeframes in 2019 and 2020. All hospital billing encounters with nonzero charges were pulled.

Analysis of impact of COVID-19 on volumes and revenue by clinical service line and sub service lines

- Timeframe: Baseline: Admit dates between March 20 and August 15, 2019.
- COVID era: Admit dates between March 20 and August 15, 2020.
- The COVID era timeframe was chosen to reflect the first full weeks of widespread closures and shelter-in-place orders. The end date was chosen to ensure sufficient time for patient discharge and diagnosis coding to take place. The time frame will be expanded as time passes.
- Data Processing: All encounters were run through the 2020 Sg2 Care Grouping™ to obtain service lines and CARE families.
- Methodology and Output: For all columns, data was aggregated by either service line or CARE family, and the metrics were calculated using the aggregate values.
- Self Pay: The hospital billing encounter's primary insurance plan and financial class were analyzed to identify patients that did not have insurance.
- Baseline encounters: Total number of encounters in the 2019 time frame.
- COVID-era encounters: Total number of encounters in the 2020 time frame.
- Volume loss: Baseline encounters minus COVID-era encounters.
- Percent volume loss: Volume loss divided by baseline encounters.