

National Patient and Procedure Volume Tracker™

Biweekly Update December 7th, 2020

Section 1: Across the country on both a year-over-year basis and last 14 and 30 days we are starting to see volumes fall. Year-over-year volumes are down double digits for observation and emergency encounters. 2020 volume is down for the last 14 and 30 calendar days. Even inpatient is down slightly (losses likely offset by increases in COVID-19 cases) in most of the country. Please note, the 6.3% drop in Inpatient across three regions for the last 14 days is correct. The numbers are different but all round to 6.3%.

Section 5: Despite the rise in COVID-19 cases, OP volume still exceeds 2019 volume across the board. Patients and providers are navigating how to continue care during the pandemic.

Section 6: Service line volume is up for the first week of November across most specialties with Infectious Disease up 15%. We would expect to see inpatient service lines and procedures deteriorate given the trends in the patient volume data through the end of November.

Section 7: The Infectious Disease service line is up 86% compared to 2019. In our last report Infectious Disease was up 73% and we expect this number to continue climbing. The more precise Orth Infectious and Parasitic Diseases Care Family (Section 10) is up 222% versus 2019. Nephrology is also up 6% but still down year-over-year. We are watching carefully all COVID-19 related "complication" service lines.

Service Line data uses Sg2's recently updated 2021 Care Groupers. We re-ran this on historical data and found minimal impact.

The patient volume report ends on Thanksgiving weekend which may account for some of the volume drop. However, we have normalized the data to compare the same day of the week between 2020 and 2019. Thanksgiving on Thursday, November 26, 2020 is being directly compared to Thanksgiving on Thursday, November 28, 2019. Decreases for inpatient, observation and emergency encounters due to the Thanksgiving holiday were greater in 2020 than 2019.

		Census Region				
		Midwest	Northeast	South	West	Grand Total
		124	35	101	35	295

Section 1 Admission Stays and Visits Recent Volume Changes

Data as of November 28, 2020

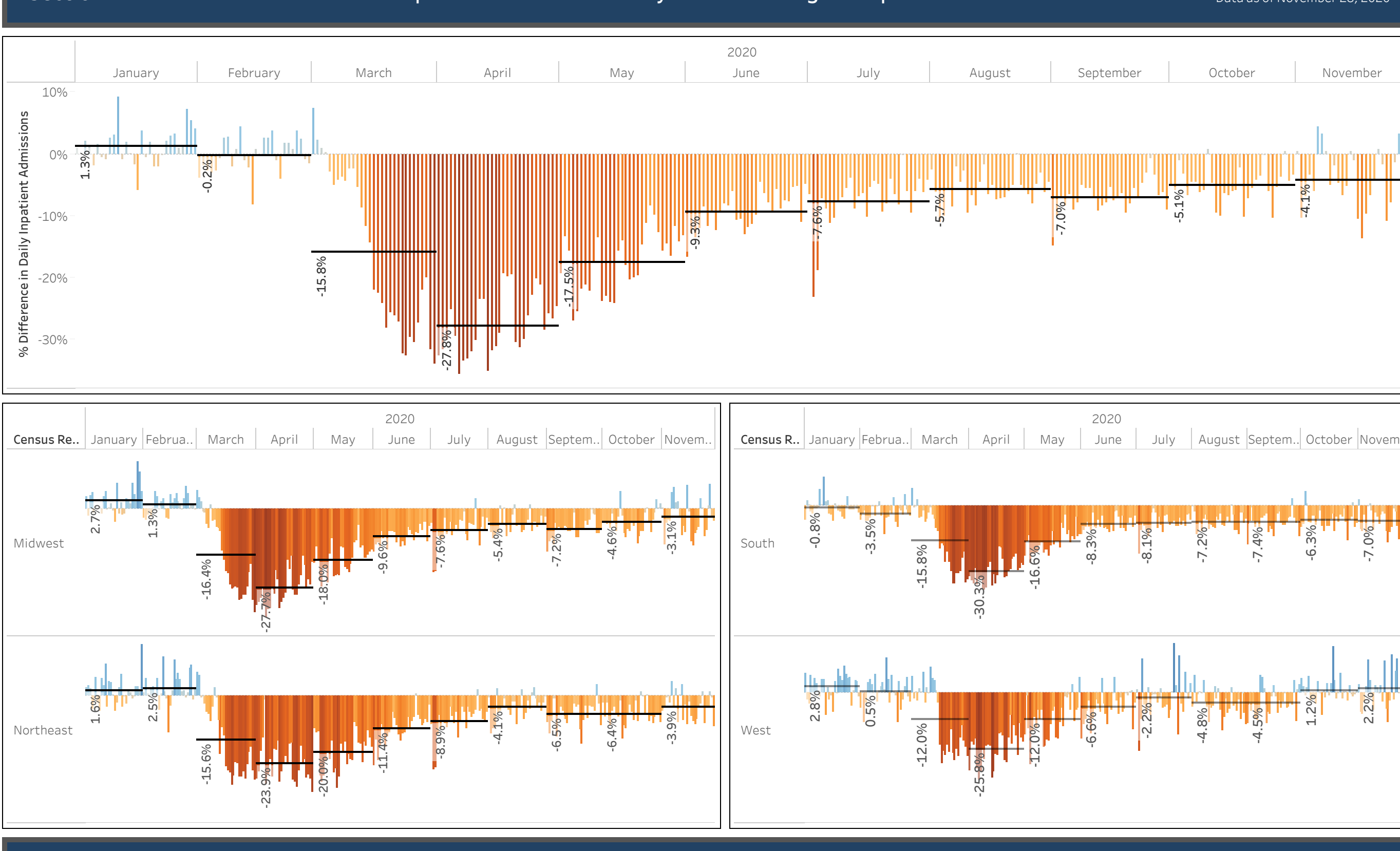
		30 Day Change Compare to 2019	14 Day Change Compare to 2019	Census Region	
				Midwest	Northeast
Daily Inpatient Admissions		▼ -3.7%	▼ -4.4%	▼ -1.7%	▼ -6.3%
Daily Observation Visits		▼ -18.6%	▼ -22.3%	▼ -12.7%	▼ -12.6%
Daily Emergency Visits		▼ -18.7%	▼ -21.0%	▼ -0.7%	▼ -8.4%
Daily Outpatient Visits		▲ 4.7%	▲ 5.8%	▼ -11.1%	▼ -22.1%

		Change in Last 30 Days	Change in Last 14 Days
Daily Inpatient Admissions		▼ -2.1%	▼ -6.2%
Daily Observation Visits		▼ -10.1%	▼ -8.4%
Daily Emergency Visits		▼ -0.6%	▼ -3.7%
Daily Outpatient Visits		▼ -9.3%	▼ -18.4%

		30 Day Change Compare to 2019	14 Day Change Compare to 2019	Census Region	
				Midwest	Northeast
Daily Inpatient Admissions		▼ -3.6%	▼ -4.8%	▼ -1.7%	▼ -6.3%
Daily Observation Visits		▼ -11.5%	▼ -17.3%	▼ -12.7%	▼ -12.6%
Daily Emergency Visits		▼ -18.1%	▼ -22.6%	▼ -0.7%	▼ -7.6%
Daily Outpatient Visits		▲ 4.3%	▲ 3.1%	▼ -11.1%	▼ -22.1%

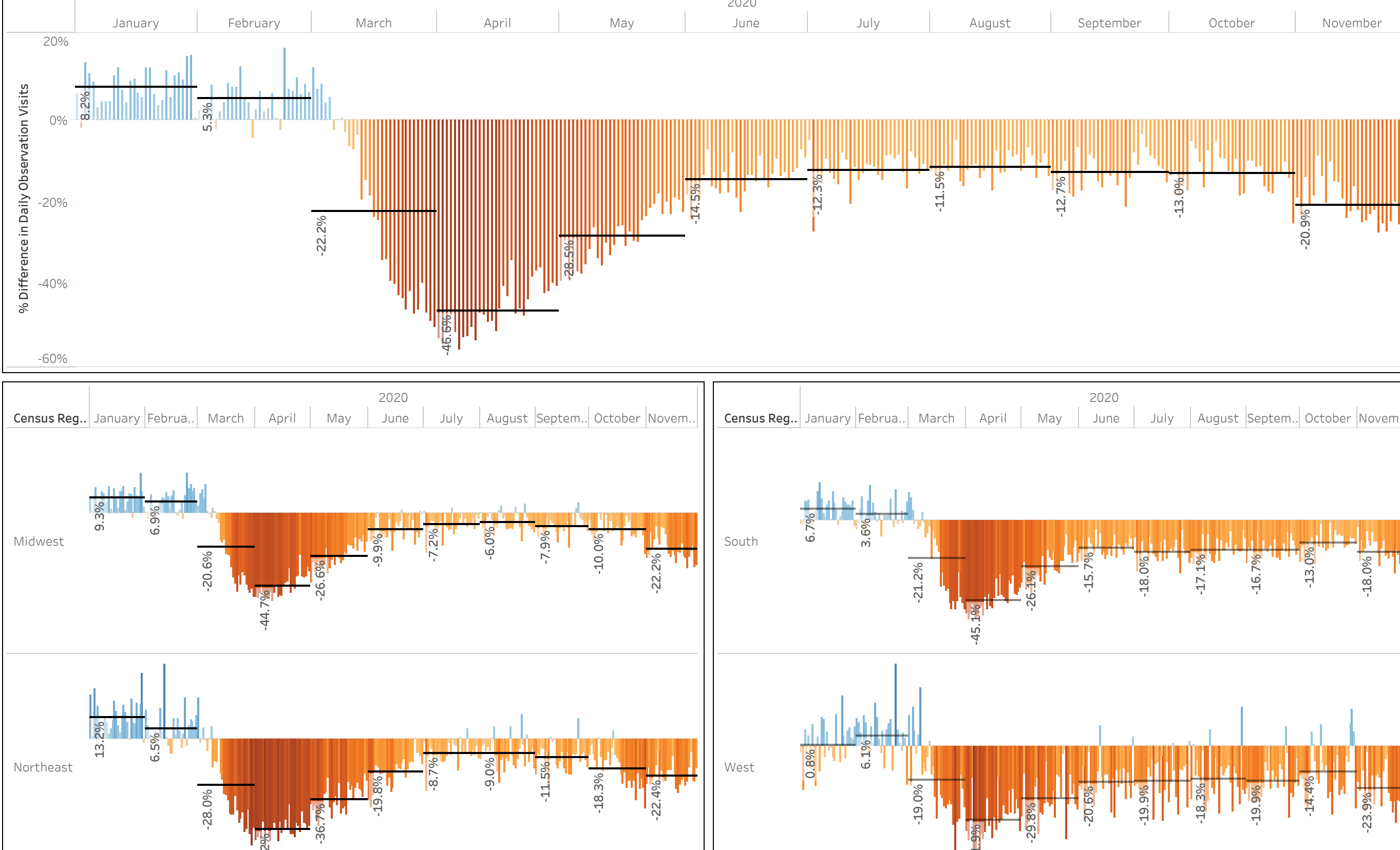
Section 2 Inpatient Admissions Daily Percent Change Compared to 2019

Data as of November 28, 2020



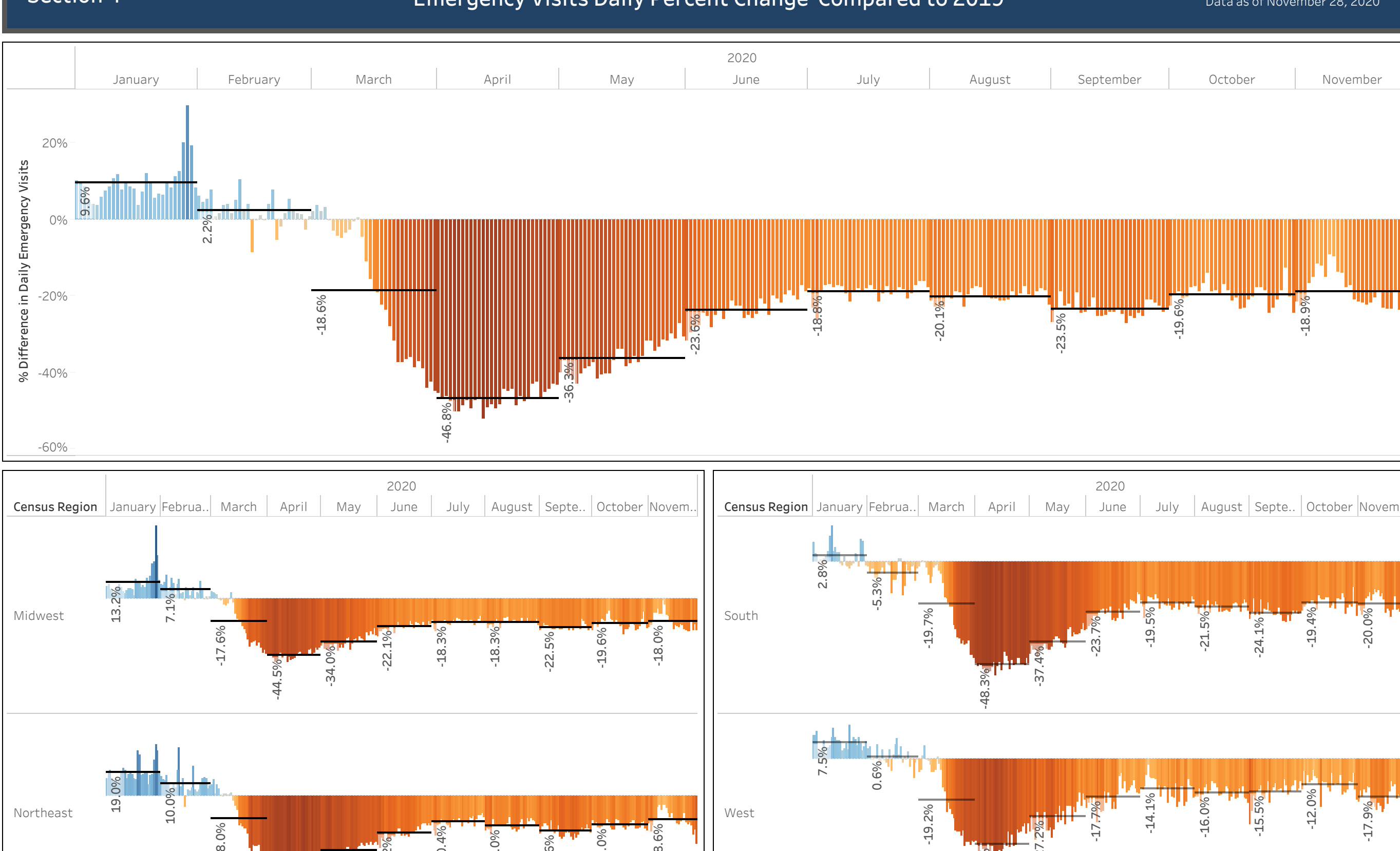
Section 3 Observation Visits Daily Percent Change Compared to 2019

Data as of November 28, 2020



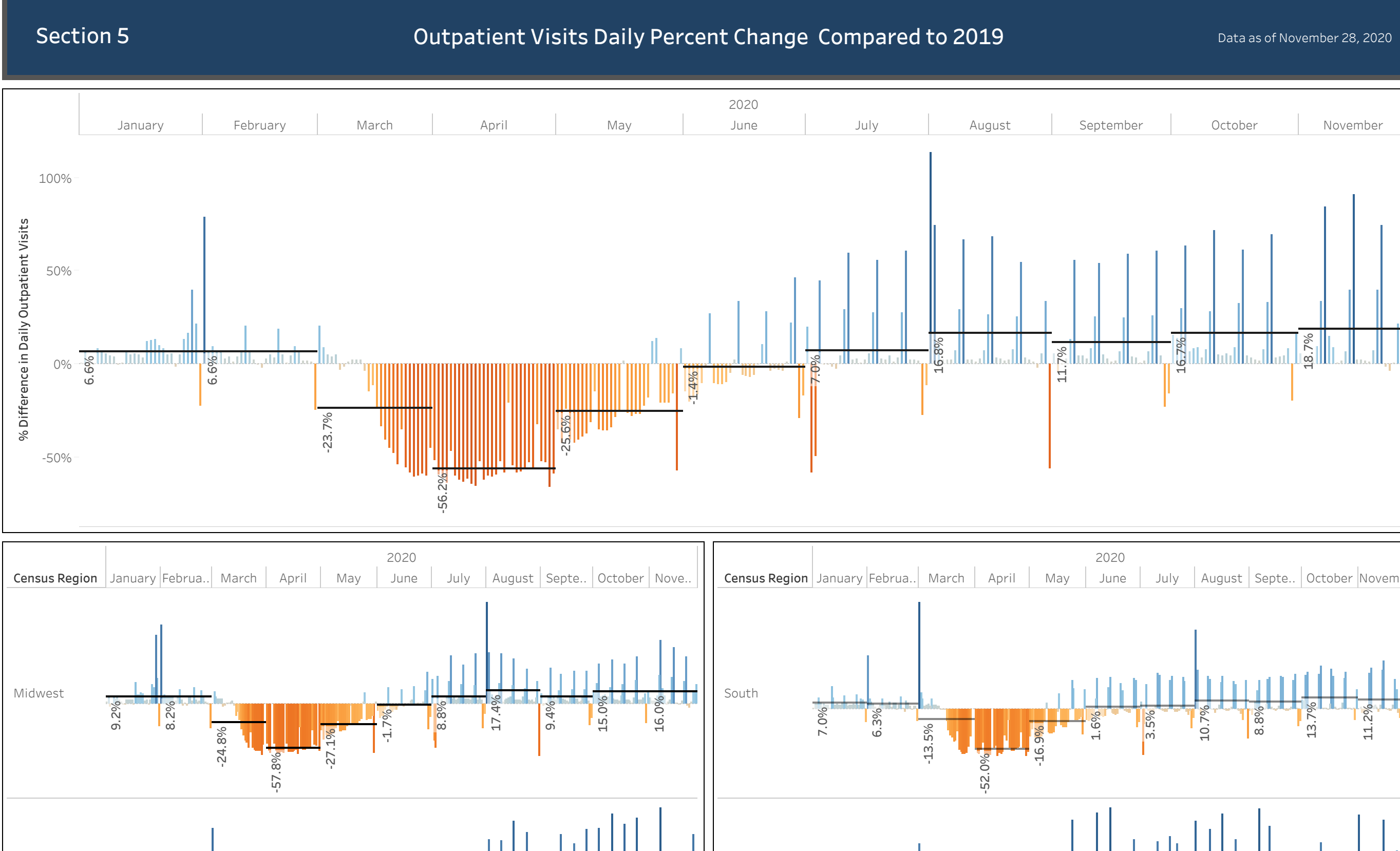
Section 4 Emergency Visits Daily Percent Change Compared to 2019

Data as of November 28, 2020



Section 5 Outpatient Visits Daily Percent Change Compared to 2019

Data as of November 28, 2020



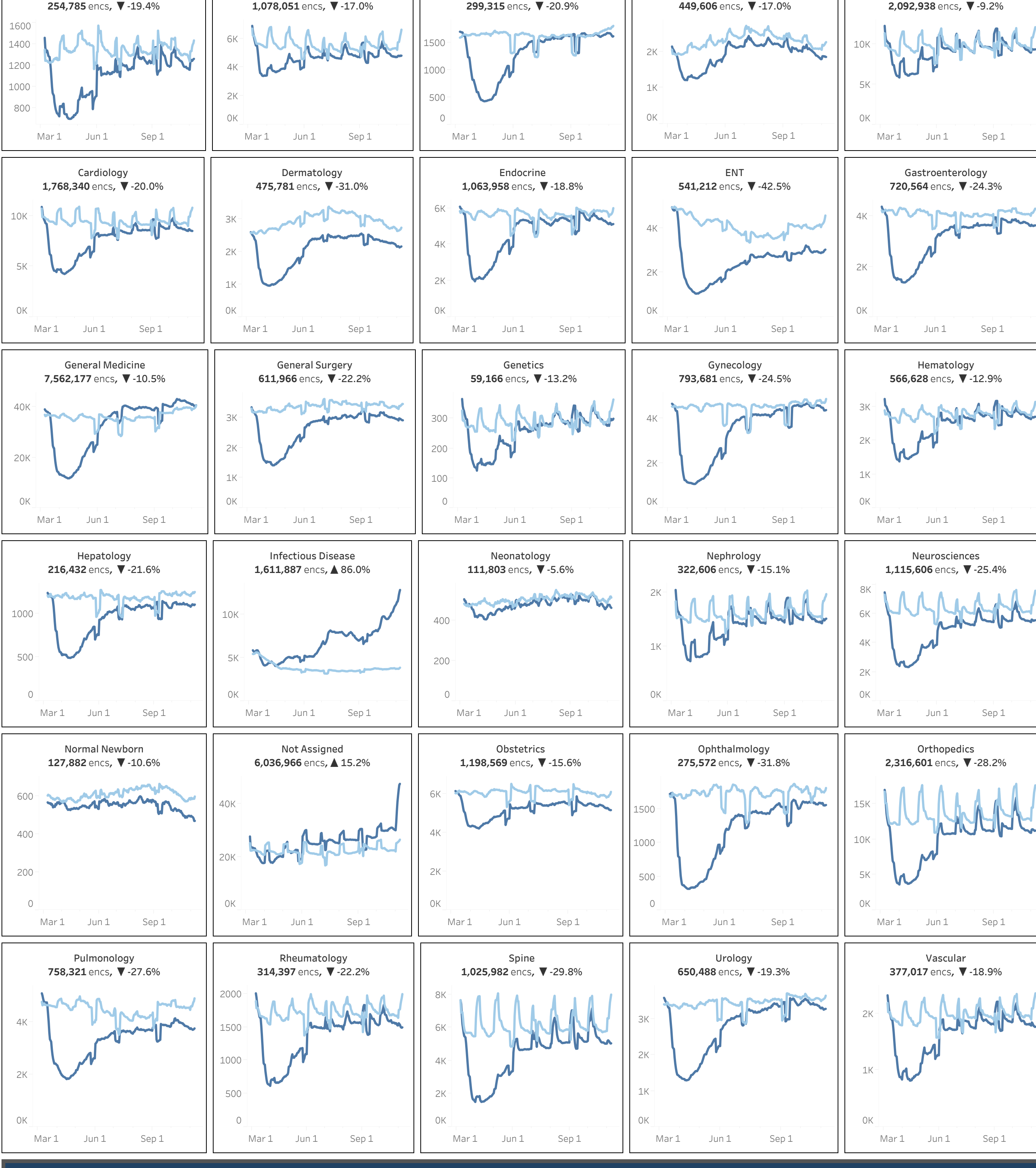
Section 6 Sg2 Service Line Percent Change Last 14 Days

Data Compares Service Line Volume Changes for the weeks of October 25, 2020 - October 31, 2020 to the weeks of November 01, 2020 - November 07, 2020

Allergy and Immunology	▲ 8.9%	Hepatology	▲ 2.4%
Behavioral Health	▲ 2.0%	Infectious Disease	▲ 15.5%
Breast Health	▼ -3.2%	Neonatology	▼ -1.1%
Burns and Wounds	▲ 3.1%	Nephrology	▲ 6.0%
Cancer	▲ 4.5%	Neurosciences	▲ 2.4%
Cardiology	▲ 0.1%	Normal Newborn	▼ -4.7%
Dermatology	▲ 0.5%	Obstetrics	▼ -1.6%
Endocrine	▲ 0.2%	Ophthalmology	▼ -1.3%
ENT	▲ 5.4%	Orthopedics	▲ 3.0%
Gastroenterology	▲ 0.7%	Pulmonology	▲ 0.6%
General Medicine	▼ -0.4%	Rheumatology	▼ -1.9%
General Surgery	▲ 0.2%	Spine	▲ 0.3%
Genetics	▲ 8.7%	Urology	▼ -0.3%
Gynecology	▼ -2.4%	Vascular	▼ -1.2%
Hematology	▲ 2.7%		

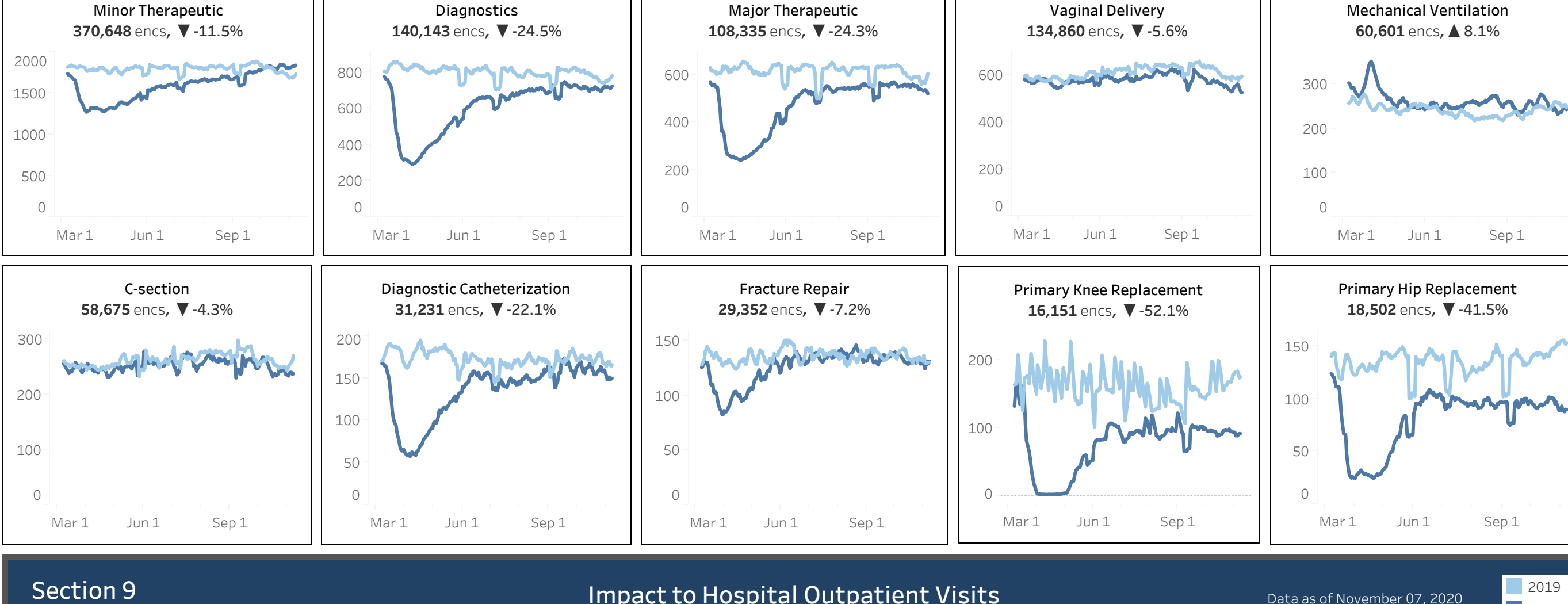
Section 7 Volume Losses by Service Line 2019 vs 2020

Data as of November 07, 2020



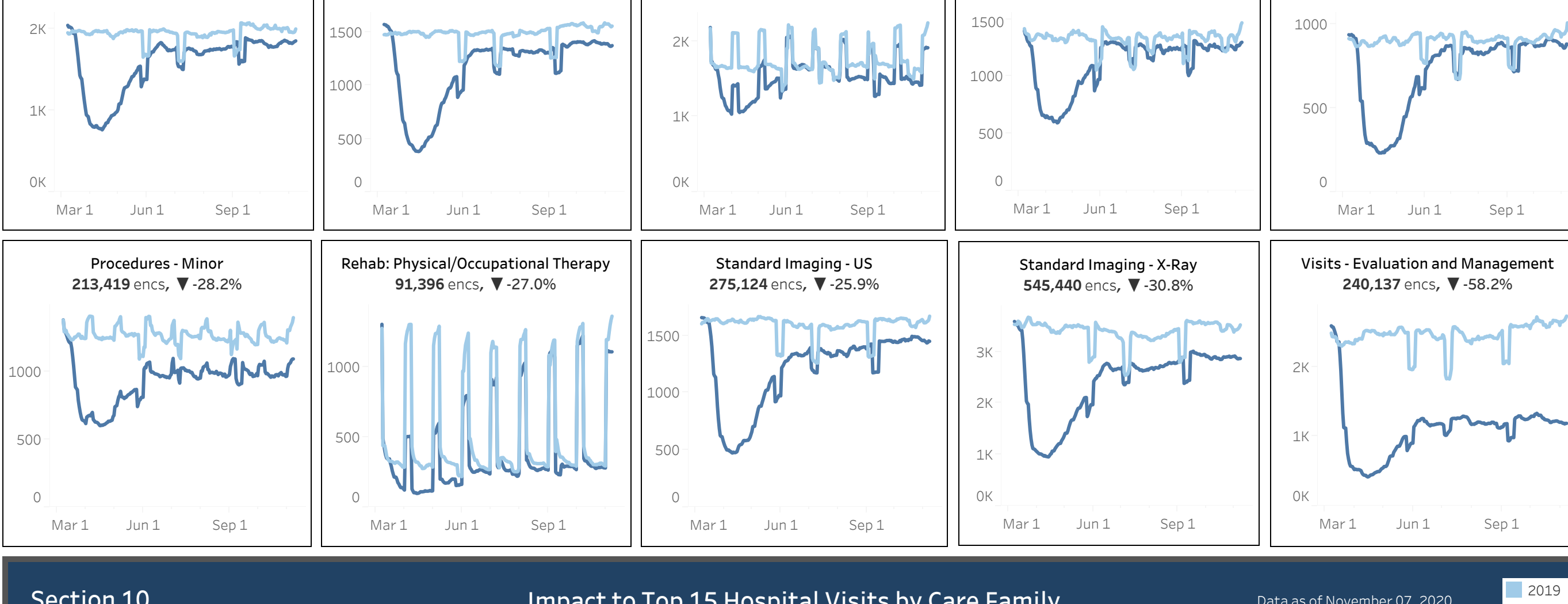
Section 8 Impact to Inpatient Procedures and Surgeries

Data as of November 07, 2020



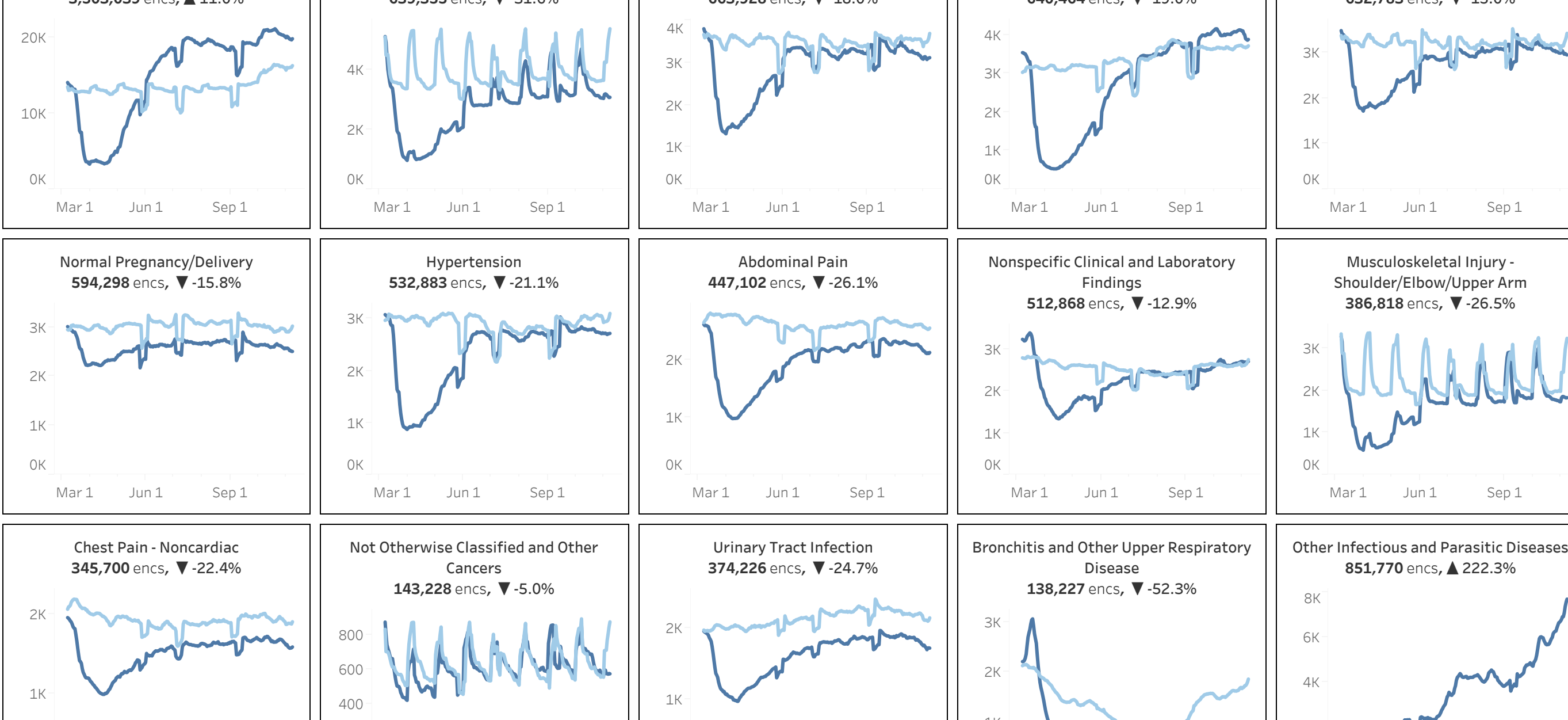
Section 9 Impact to Hospital Outpatient Visits

Data as of November 07, 2020



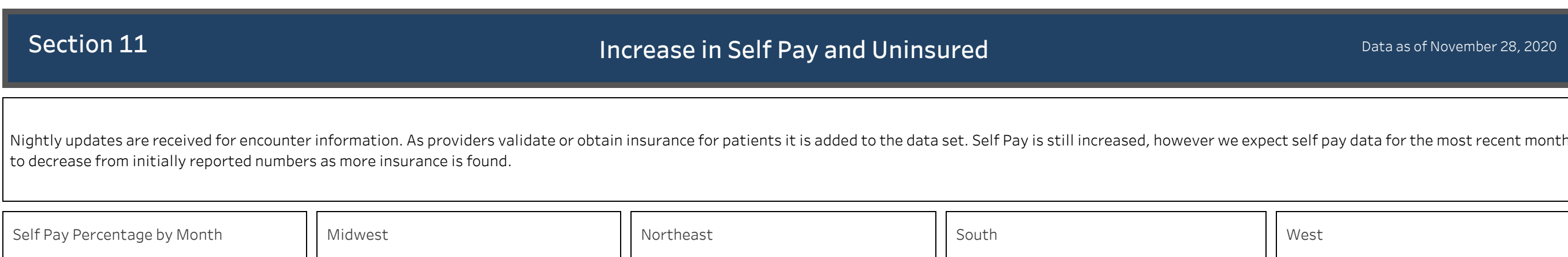
Section 10 Impact to Top 15 Hospital Visits by Care Family

Data as of November 07, 2020



Section 11 Increase in Self Pay and Uninsured

Data as of November 28, 2020



Nightly updates are received for encounter information. As providers validate or obtain insurance for patients it is added to the data set. Self Pay is still increased, however we expect self pay data for the most recent month to decrease from initially reported numbers as more insurance is found.

Data Source: 59 StrataSphere health systems with decision support and valid coded encounter data available for both 2019 and 2020. Strata reviewed a total of 10 million encounters for matching timeframes in 2019 and 2020. All hospital billing encounters with nonzero charges were pulled.

Analysis of impact of COVID-19 on volumes and revenue by clinical service line and sub service lines

Timeframe: January 1, 2020 to November 28, 2020.
Data Processing: Considerations:
 - All encounters with Total Charge = 0 are removed from the encounter count.
 - Once the encounter has charges greater than 0 it will then be included in the encounter count.
 - Self-Pay: The hospital billing encounter's primary insurance plan and financial class were analyzed to identify patients that did not have insurance.

Baseline: Admit dates between March 20 and November 07, 2019.
COVID era: Admit dates between March 20 and November 07, 2020.
 The COVID era timeline was chosen to reflect the first full weeks of widespread closures and shelter-in-place orders. The end date was chosen to ensure sufficient time for patient discharge and diagnosis coding to take place. The time frame will be expanded as time passes.
Data Processing: All encounters were run through the 2021 Sg2 Care Groupers™ to obtain service lines and CARE families.
Methodology and Output:
 For all columns, data was aggregated by either service line or CARE family, and the metrics were calculated using the aggregate values.
 The columns in the output were calculated as follows:
 - Baseline encounters: Total number of encounters in the 2019 time frame.
 - COVID-era encounters: Total number of encounters in the 2020 time frame.
 - Volume loss: Baseline encounters minus COVID-era encounters.
 - Percent volume loss: Volume loss divided by baseline encounters.