

National Patient and Procedure Volume Tracker™

Update for March 1st, 2021

This report represents a full look at patient volumes in 2020 compared to 2019. Except for outpatient, patient volume in 2020 never reached pre-COVID 2019 levels. There has been a new normal that has been established with inpatient volumes 5-7% off 2019 volumes, observation volumes are 11-20% off 2019 volumes and emergency "treat and release" visits are 20-25% off 2019 volumes. The emergency department has been a health access point for many people and a financial mainstay for many organizations. While necessary care needs to come back, health systems need to leverage the lessons of where and how to deliver primary and urgent care to determine whether or not the drop in ED visits is a negative outcome. Outpatient is the only area with increased volume. Many organizations opened up weekend availability in 2020 to make up for the drop in volume during March - May 2020. This worked.

Service line data also shows a lot of missed care. Infectious Disease is the only service line with 2020 volumes exceeding 2019. It is also important to note that "Not Assigned" cases are higher in 2020 compared to 2019. Not Assigned represents encounters that have not been coded yet. Seven weeks after the close of the year and there is still a large backlog of uncoded cases. This has revenue ramifications to organizations.

Many inpatient procedures continue to be down substantially. With the changing inpatient unit and size of care rules and increasing availability of same day surgeries, there will be tectonic shifts in many specialties. We are working on bringing more ambulatory data into our reports to track this.

This report represents a full look at patient volumes in 2020 compared to 2019. In this report we performed daily comparisons between 2020 and 2019. When looking at daily patient volumes, day of the week matters. To account for this, we shifted days in 2020 to match 2019 days of the week. For example, Friday, January 31, 2020 was compared against Friday, February 1, 2019. 2020 was also a leap year. Therefore, Monday, March 30, 2020 was compared to Monday, April 1, 2019. The report states that the volume data is through December 29, 2020 however this accounts for a full year comparison of 2020 vs 2019.

Also note that the report ends during holiday season. Decreases for inpatient, observation and emergency encounters due to holidays were greater in 2020 than 2019.

Census Region				
Midwest	Northeast	South	West	Grand Total
124	35	101	35	295

Section 1 Admission Stays and Visits Recent Volume Changes

Data as of December 29, 2020

30 Day Change Compare to 2019				14 Day Change Compare to 2019			
Daily Inpatient Admissions	▼7.5%	Daily Observation Visits	▼23.9%	Daily Emergency Visits	▼25.8%	Daily Outpatient Visits	▲5.5%
Daily Inpatient Admissions	▼6.8%	Daily Observation Visits	▼23.4%	Daily Emergency Visits	▼27.7%	Daily Outpatient Visits	▲8.0%

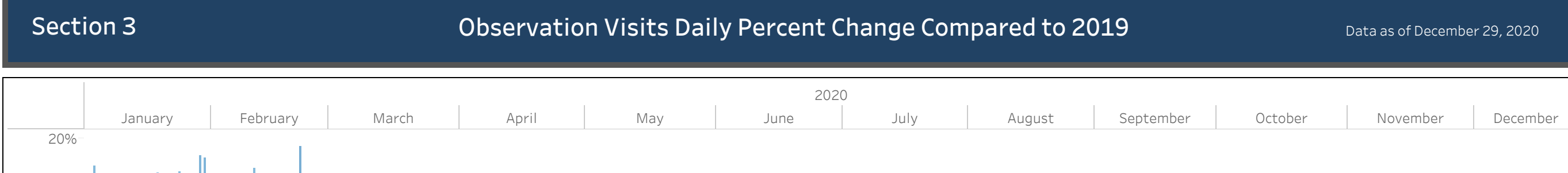
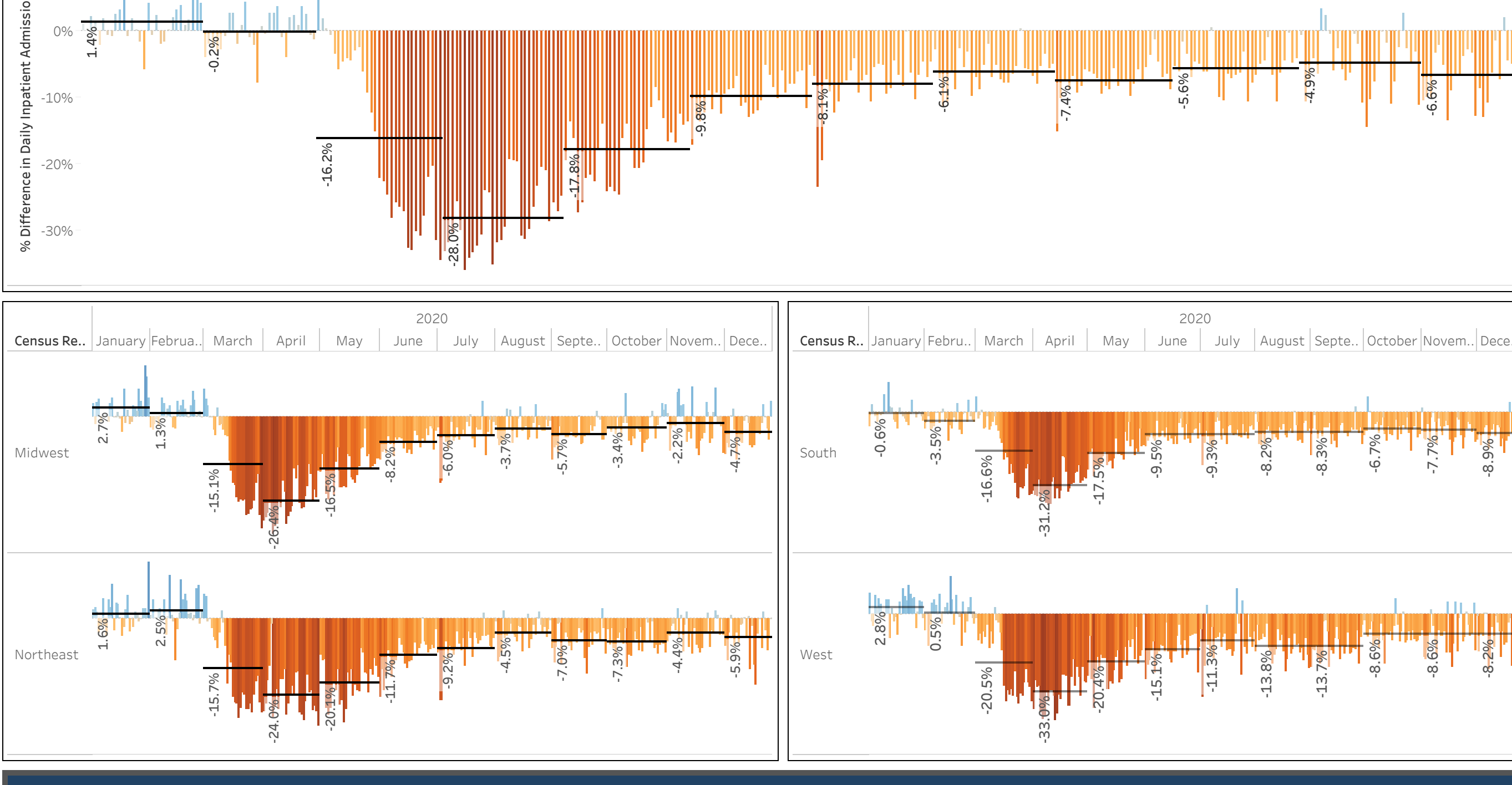
Change in Last 30 Days				Change in Last 14 Days			
Daily Inpatient Admissions	▲3.4%	Daily Observation Visits	▲3.1%	Daily Emergency Visits	▼1.8%	Daily Outpatient Visits	▲5.6%
Daily Inpatient Admissions	▼4.5%	Daily Observation Visits	▼2.3%	Daily Emergency Visits	▲0.4%	Daily Outpatient Visits	▼21.3%

Census Region	Metric	30 Day Change Compare to 2019	14 Day Change Compare to 2019
Midwest	Daily Inpatient Admissions	▼5.6%	▼3.8%
	Daily Observation Visits	▼11.5%	▼7.7%
	Daily Emergency Visits	▼30.3%	▼23.0%
	Daily Outpatient Visits	▲4.3%	▲8.8%
Northeast	Daily Inpatient Admissions	▼5.9%	▼6.5%
	Daily Observation Visits	▼24.3%	▼24.5%
	Daily Emergency Visits	▼22.4%	▼25.3%
	Daily Outpatient Visits	▲15.5%	▲14.5%
South	Daily Inpatient Admissions	▼9.6%	▼9.2%
	Daily Observation Visits	▼24.1%	▼23.6%
	Daily Emergency Visits	▼26.2%	▼26.8%
	Daily Outpatient Visits	▲5.2%	▲8.9%
West	Daily Inpatient Admissions	▼9.1%	▼7.9%
	Daily Observation Visits	▼35.8%	▼37.9%
	Daily Emergency Visits	▼24.3%	▼25.5%
	Daily Outpatient Visits	▼3.0%	▼0.1%

Census Region	Metric	Change in Last 30 Days	Change in Last 14 Days
Midwest	Daily Inpatient Admissions	▲1.2%	▼2.5%
	Daily Observation Visits	▲1.3%	▲1.8%
	Daily Emergency Visits	▼7.4%	▼1.5%
	Daily Outpatient Visits	▲2.9%	▼20.5%
Northeast	Daily Inpatient Admissions	▲2.6%	▼7.9%
	Daily Observation Visits	▼3.3%	▼2.1%
	Daily Emergency Visits	▼2.2%	▼3.9%
	Daily Outpatient Visits	▲2.2%	▼25.9%
South	Daily Inpatient Admissions	▲4.0%	▼5.2%
	Daily Observation Visits	▼5.4%	▼2.2%
	Daily Emergency Visits	▼1.8%	▲1.2%
	Daily Outpatient Visits	▲7.6%	▼20.4%
West	Daily Inpatient Admissions	▲5.8%	▼2.4%
	Daily Observation Visits	▼4.9%	▼6.6%
	Daily Emergency Visits	▲4.0%	▼5.9%
	Daily Outpatient Visits	▲9.5%	▼18.5%

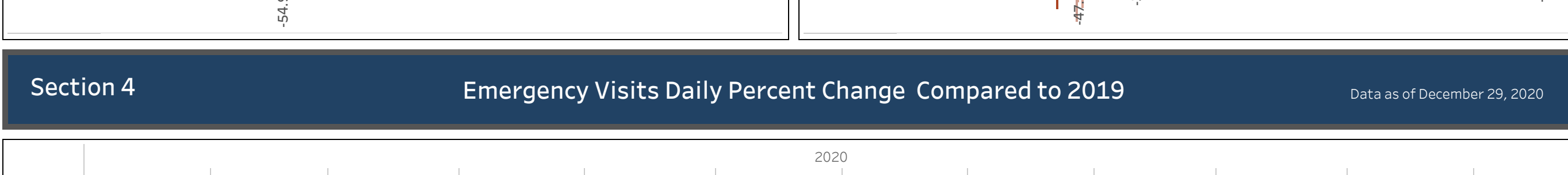
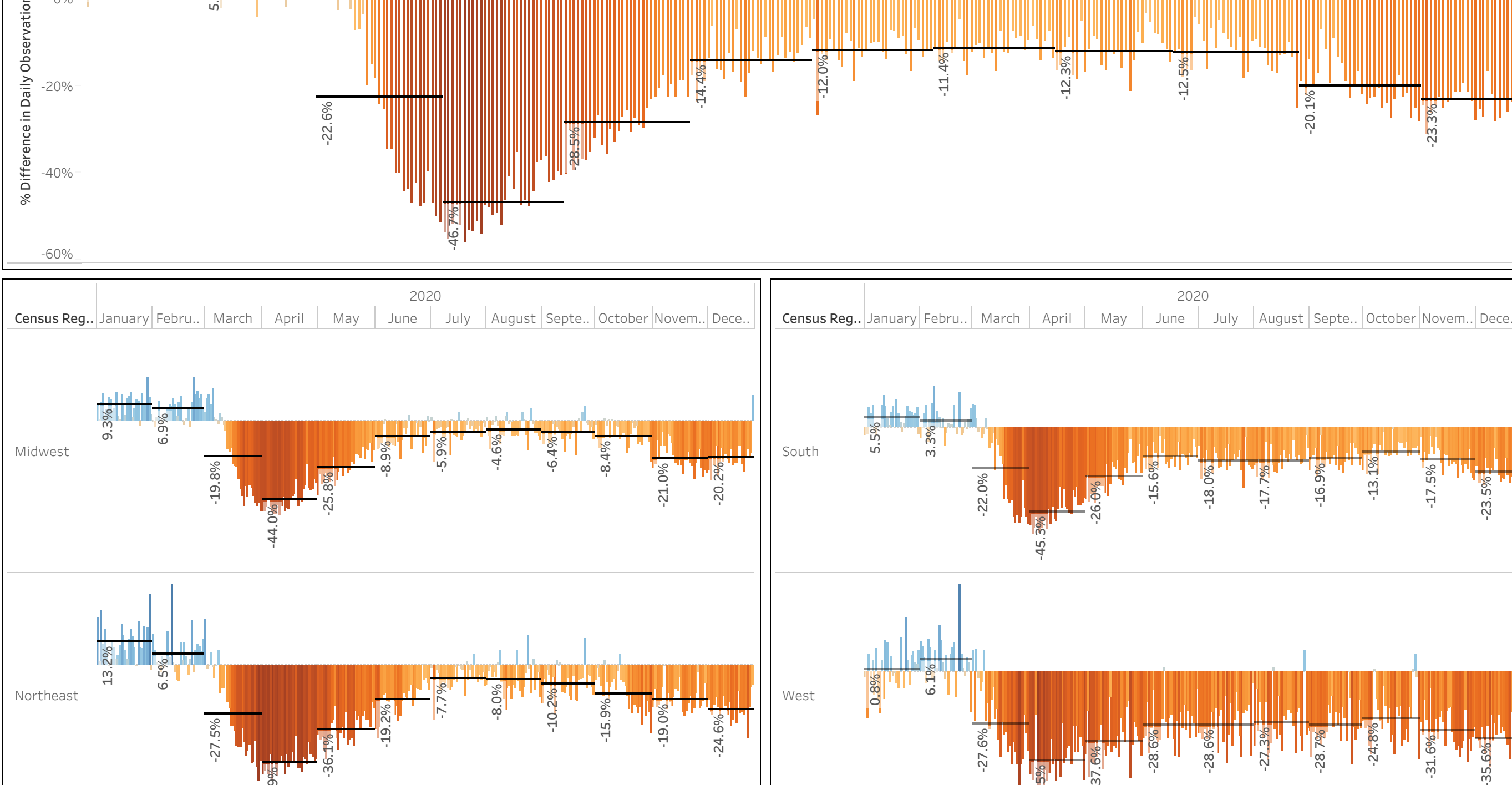
Section 2 Inpatient Admissions Daily Percent Change Compared to 2019

Data as of December 29, 2020



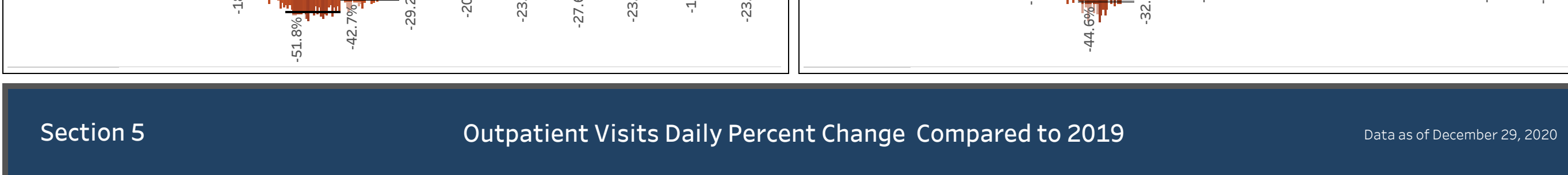
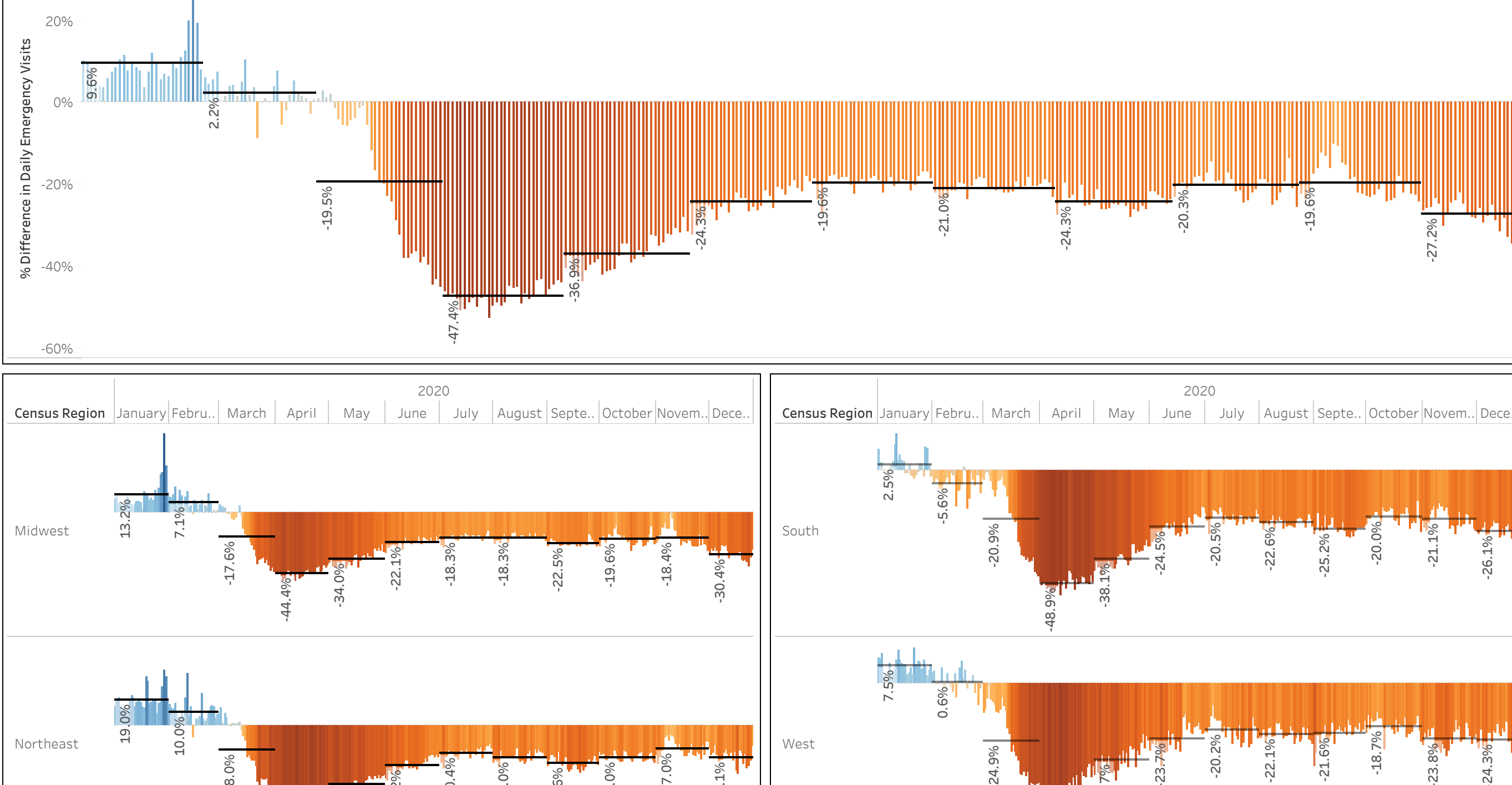
Section 3 Observation Visits Daily Percent Change Compared to 2019

Data as of December 29, 2020



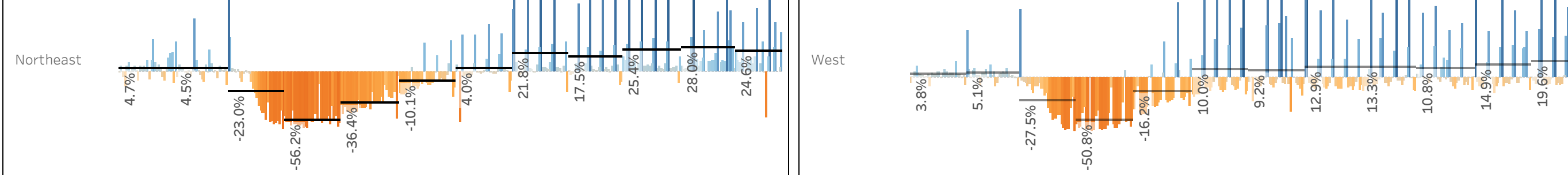
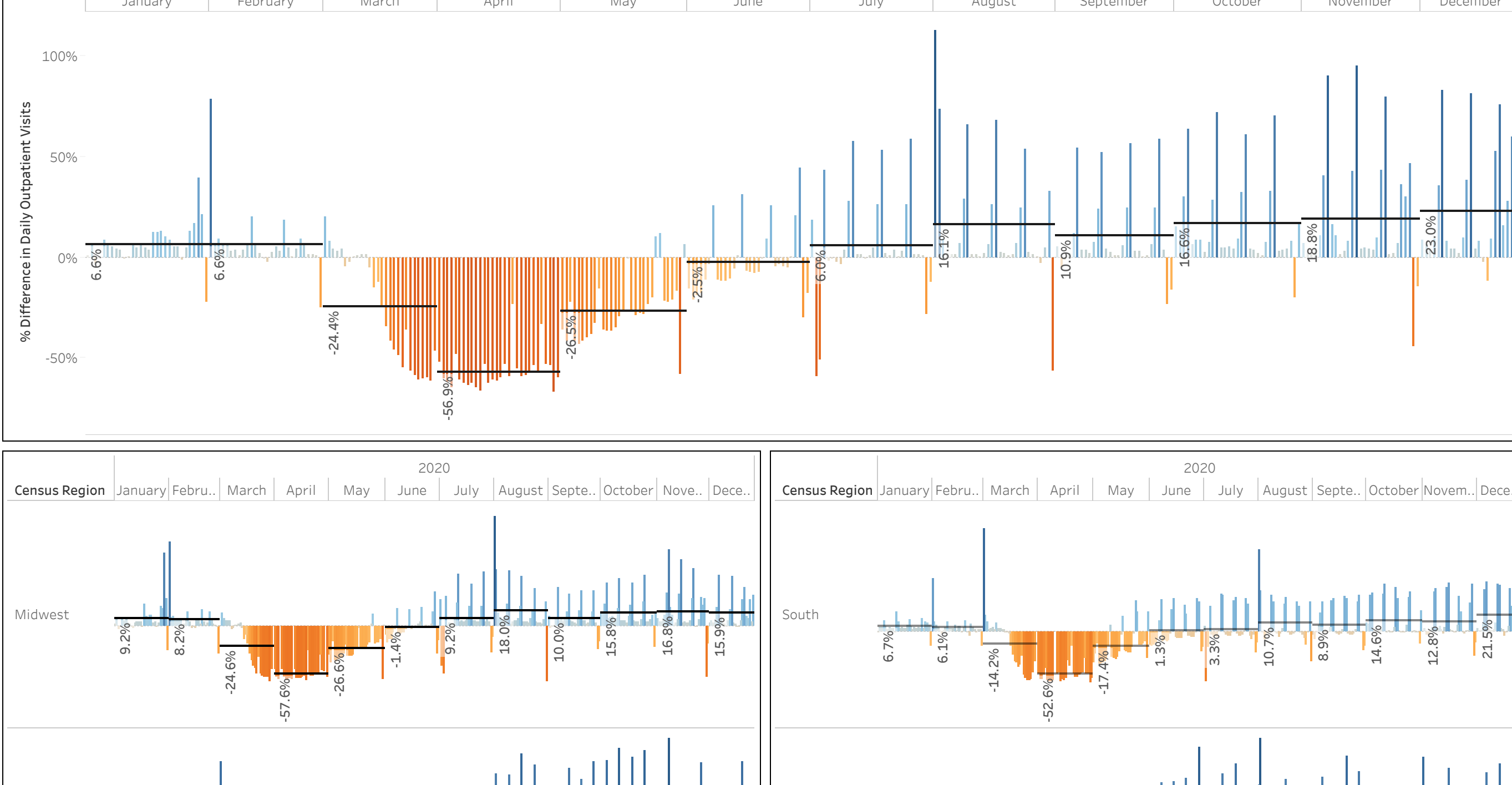
Section 4 Emergency Visits Daily Percent Change Compared to 2019

Data as of December 29, 2020



Section 5 Outpatient Visits Daily Percent Change Compared to 2019

Data as of December 29, 2020



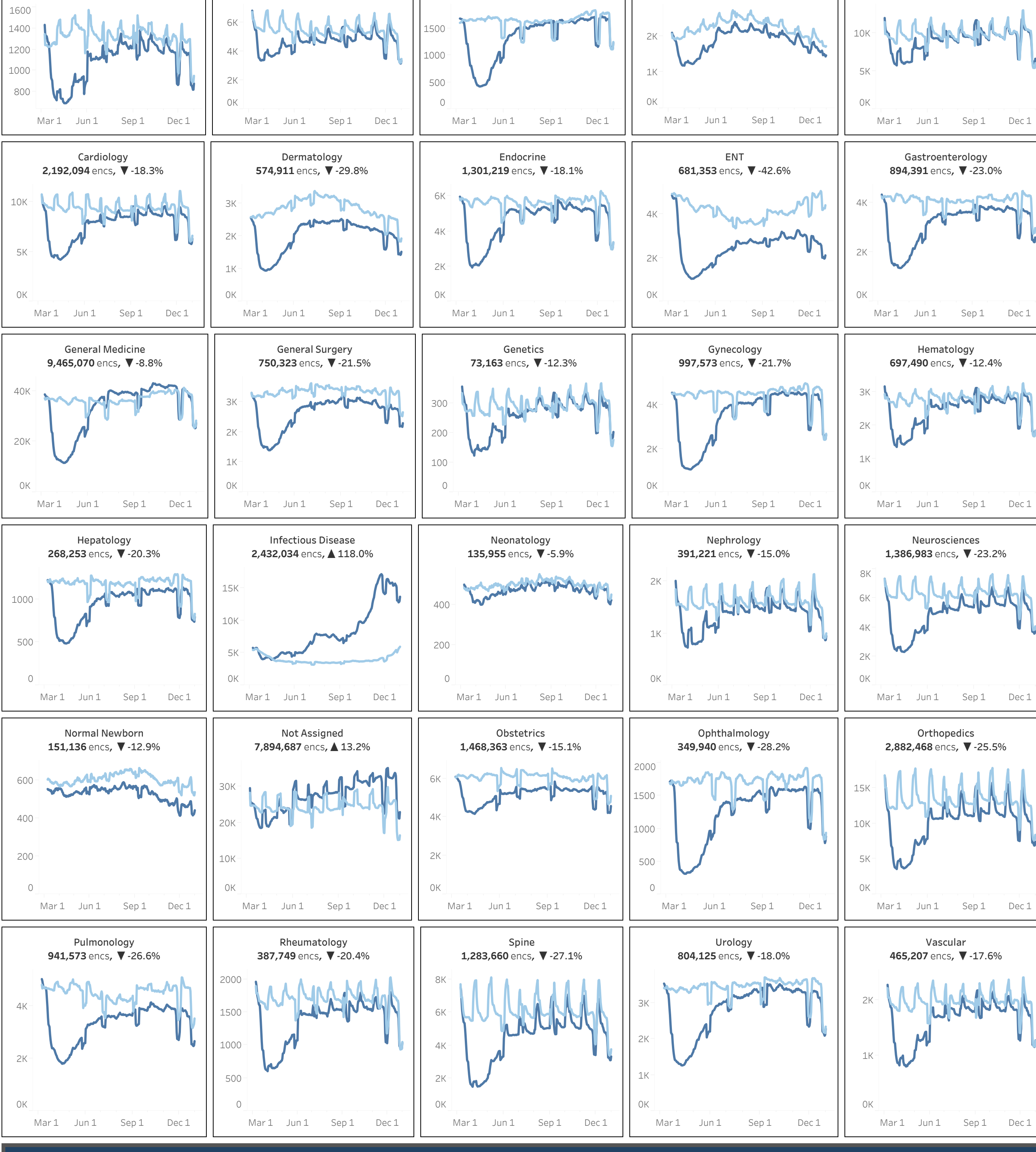
Section 6 Sg2 Service Line Percent Change Last 14 Days

Data Compares Service Line Volume Changes for the weeks of December 18, 2020 - December 24, 2020 to the weeks of December 25, 2020 - December 31, 2020

Allegory and Immunology	▼-14.1%
Behavioral Health	▼-16.4%
Breast Health	▼-16.8%
Burns and Wounds	▼-5.0%
Cancer	▼-16.8%
Cardiology	▼-10.5%
Dermatology	▼-10.1%
Endocrine	▼-16.6%
ENT	▼-10.2%
Gastroenterology	▼-15.0%
General Medicine	▼-15.9%
General Surgery	▼-8.1%
Genetics	▼-19.4%
Gynecology	▼-20.9%
Hematology	▼-19.2%
Hepatology	▼-16.3%
Infectious Disease	▼-9.6%
Neonatology	▼-7.2%
Nephrology	▼-14.3%
Neurosciences	▼-13.6%
Normal Newborn	▼-5.4%
Obstetrics	▼-7.8%
Ophthalmology	▼-21.9%
Orthopedics	▼-15.7%
Pulmonology	▼-13.0%
Rheumatology	▼-14.8%
Spine	▼-16.0%
Urology	▼-15.4%
Vascular	▼-14.5%

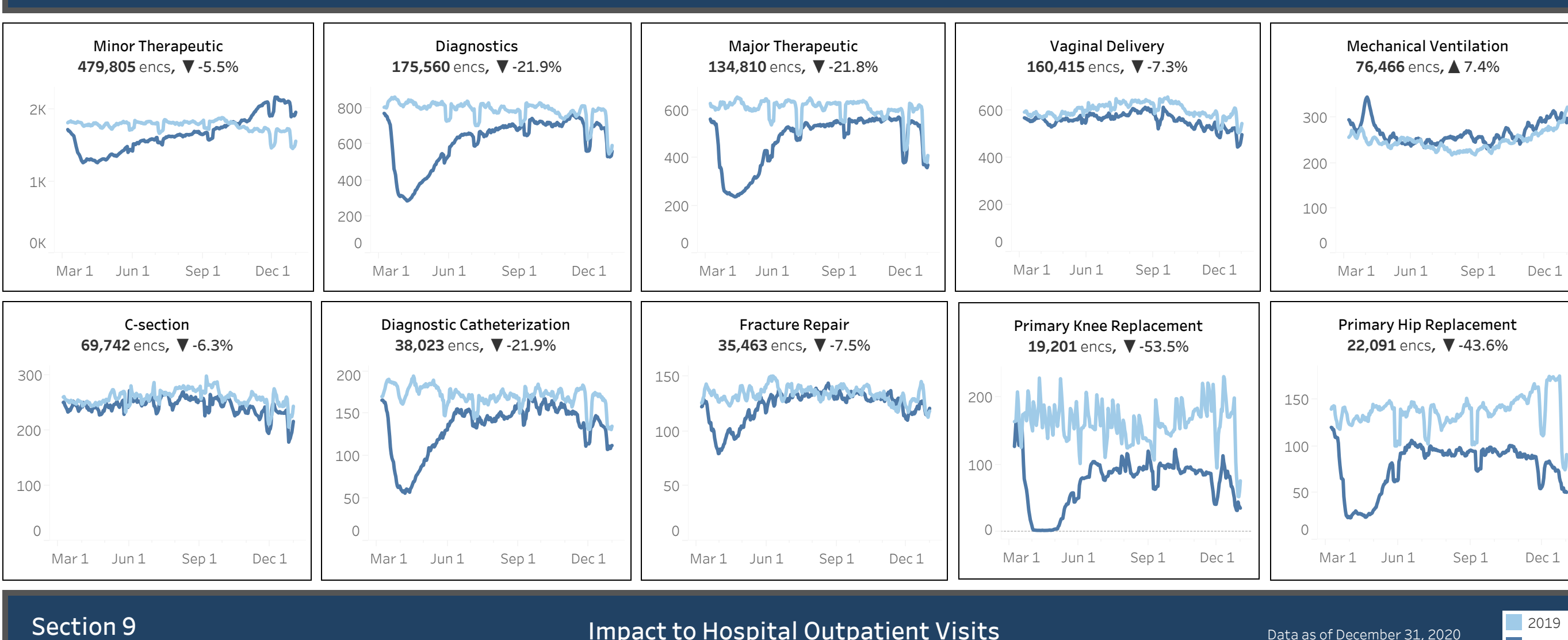
Section 7 Volume Losses by Service Line 2019 vs 2020

Data as of December 31, 2020



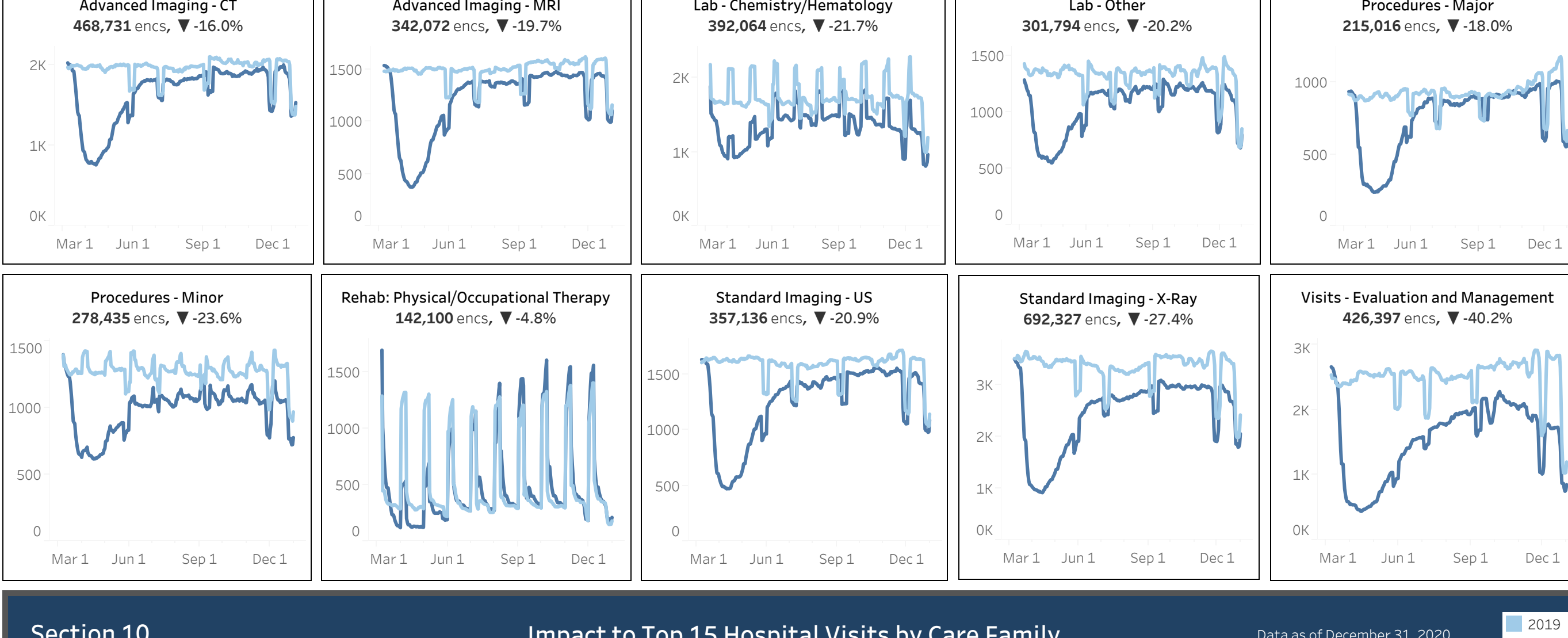
Section 8 Impact to Inpatient Procedures and Surgeries

Data as of December 31, 2020



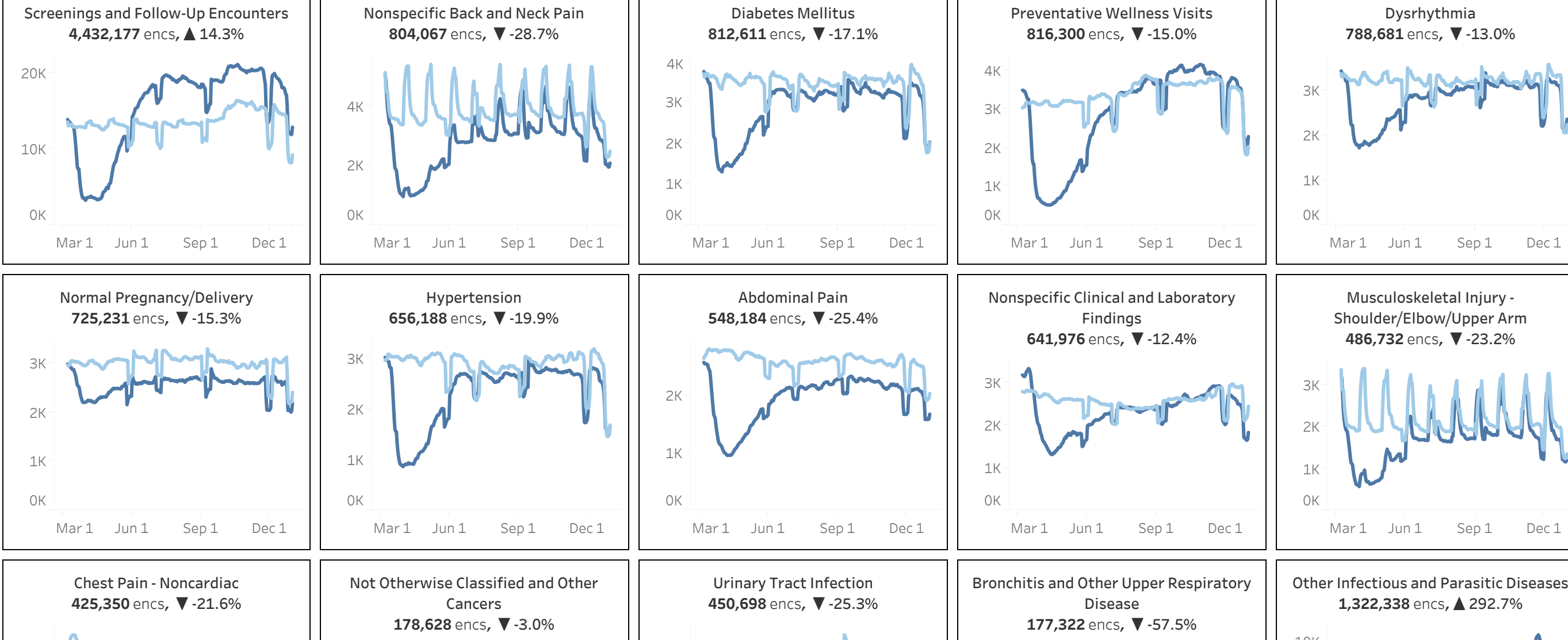
Section 9 Impact to Hospital Outpatient Visits

Data as of December 31, 2020



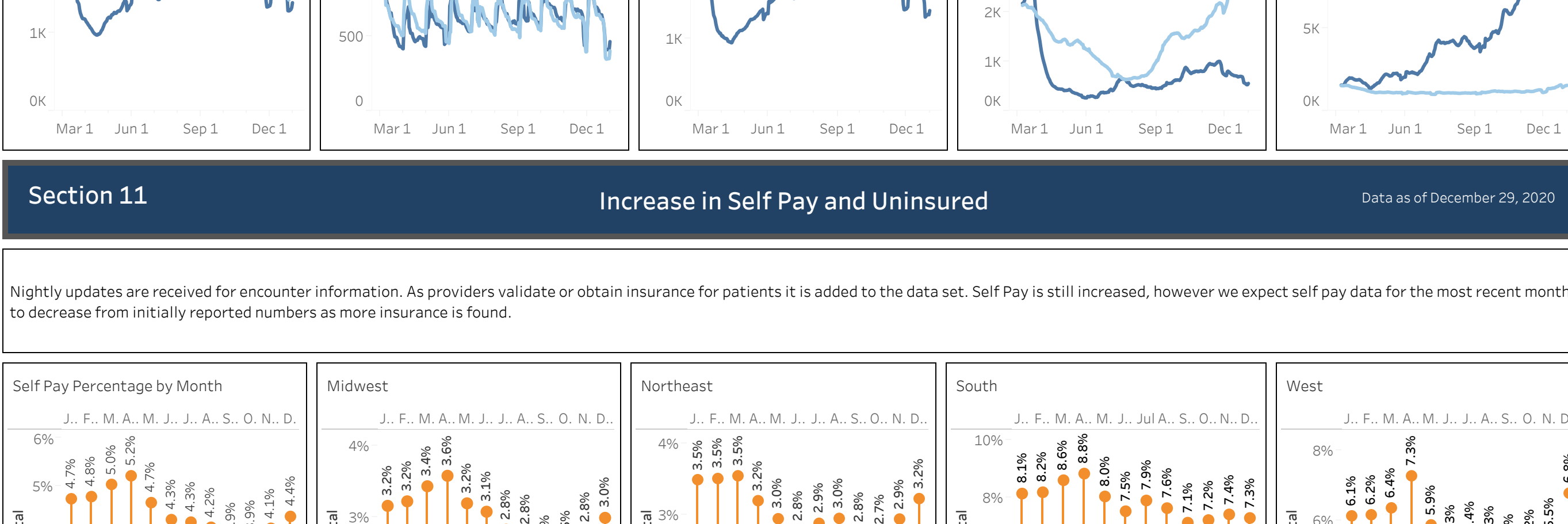
Section 10 Impact to Top 15 Hospital Visits by Care Family

Data as of December 31, 2020



Section 11 Increase in Self Pay and Uninsured

Data as of December 29, 2020



Data Source: 59 StrataSphere health systems with decision support and valid coded encounter data available for both 2019 and 2020. Strata reviewed a total of 10 million encounters for matching timelapses in 2019 and 2020. All hospital billing encounters with nonzero charges were pulled.

Analysis of impact of COVID-19 on volumes and revenue by clinical service line and sub service lines

Timeframe: Baseline: Admit dates between March 20 and December 31, 2019. COVID era: Admit dates between March 20 and December 31, 2020. The COVID era timeframe was chosen to reflect the first full weeks of widespread closures and shelter-in-place orders. The end date was chosen to ensure sufficient time for patient discharge and diagnosis coding to take place. The time frame will be expanded as time passes. Data Processing: All encounters were run through the 2021 Sg2 Care Groups™ to obtain service lines and CARE families. Methodology and Output: For all columns, data was aggregated by either service line or CARE family, and the metrics were calculated using the aggregate values. The columns in the output were calculated as follows: Baseline encounters: Total number of encounters in the 2019 time frame. COVID-era encounters: Total number of encounters in the 2020 time frame. Volume loss: Baseline encounters minus COVID-era encounters. Percent volume loss: Volume loss divided by baseline encounters.