

National Patient and Procedure Volume Tracker™

Monthly Update 4/12/2021

Section 1.1 – Overall, patient volumes have rebounded since the February snow storms. The most dramatic shift is seen in the South Region (Section 2.2).

Sections 1.1 and 1.2 – The fastest growing area the past 30 days and consistently double digits compared to the 26-week rolling average is Observation. Initial examination of the data shows an increase in Cardiology, General Medicine and Neurosciences Service Lines. The biggest increases came from the Sg2 Care Families of “Chest Pain – Noncardiac,” “Dysrhythmia,” “Syncope,” “Congestive Heart Failure,” “Epilepsy and Seizure Disorders,” and “Coronary Heart Disease”. We stratified these encounters by patients over and under 65 years old and found the 65+ age group increasing faster than the under 65 age group. We suspect that as patients are vaccinated they are more comfortable seeking out care.

Section 1.4 - Aside from Outpatient, patient volumes have not reached pre-COVID-19 2019 levels. The recent increase in Outpatient visits can be partially attributed to vaccine administration. Vaccine administration is also the reason that General Medicine outpatient volume has increased in 2021 (Section 7.1).

Section 6 – Children’s Hospitals also recovered from the snow storms, however their February volume numbers are much lower due to the mid-month disruption (Section 6.3). We have a large portion of Children’s Hospitals in the South Region. Their outpatient growth is also less than adult hospitals as COVID-19 vaccine administration in children is not yet approved.

Section 7.2 – Infectious Disease continues to decrease! This is seen across all regions (Section 9). We are also monitoring shifts in the age groups that are being admitted. The 65+ age groups are showing a decrease in admissions whereas those age populations that are not vaccinated are making up a higher percentage of Inpatient stays.

Section 8 – Procedure volumes rebounded after the holidays, but growth has not accelerated beyond September and October 2020 volumes. For example, Colonoscopy procedures are up 11% compared to the past 30 days but overall volume is still down.

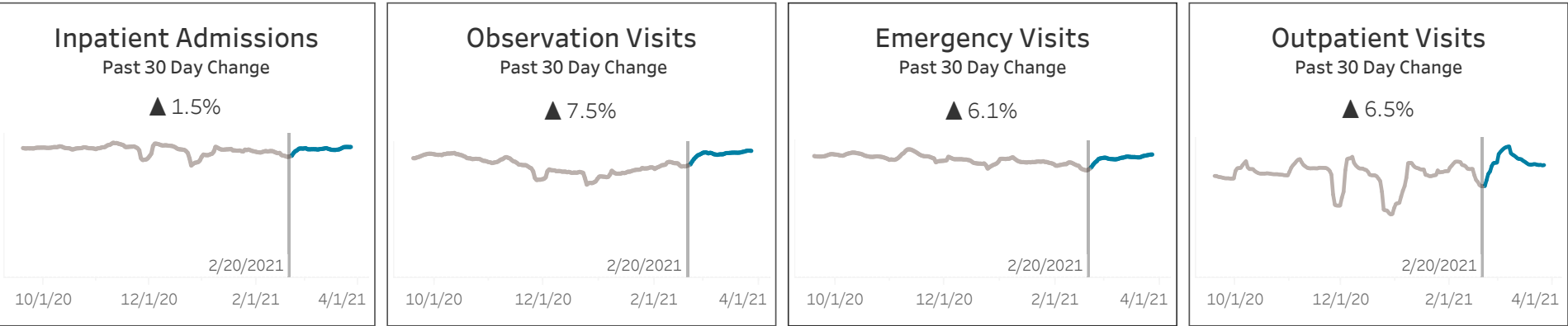
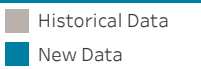
We have added 3 health systems which equates to 5 hospitals and 1 children’s hospital since the previous report. We are now reporting data from 352 hospitals, the break down by U.S. Census Region is below.

Midwest	Northeast	South	West	Grand Total
140	40	128	44	352

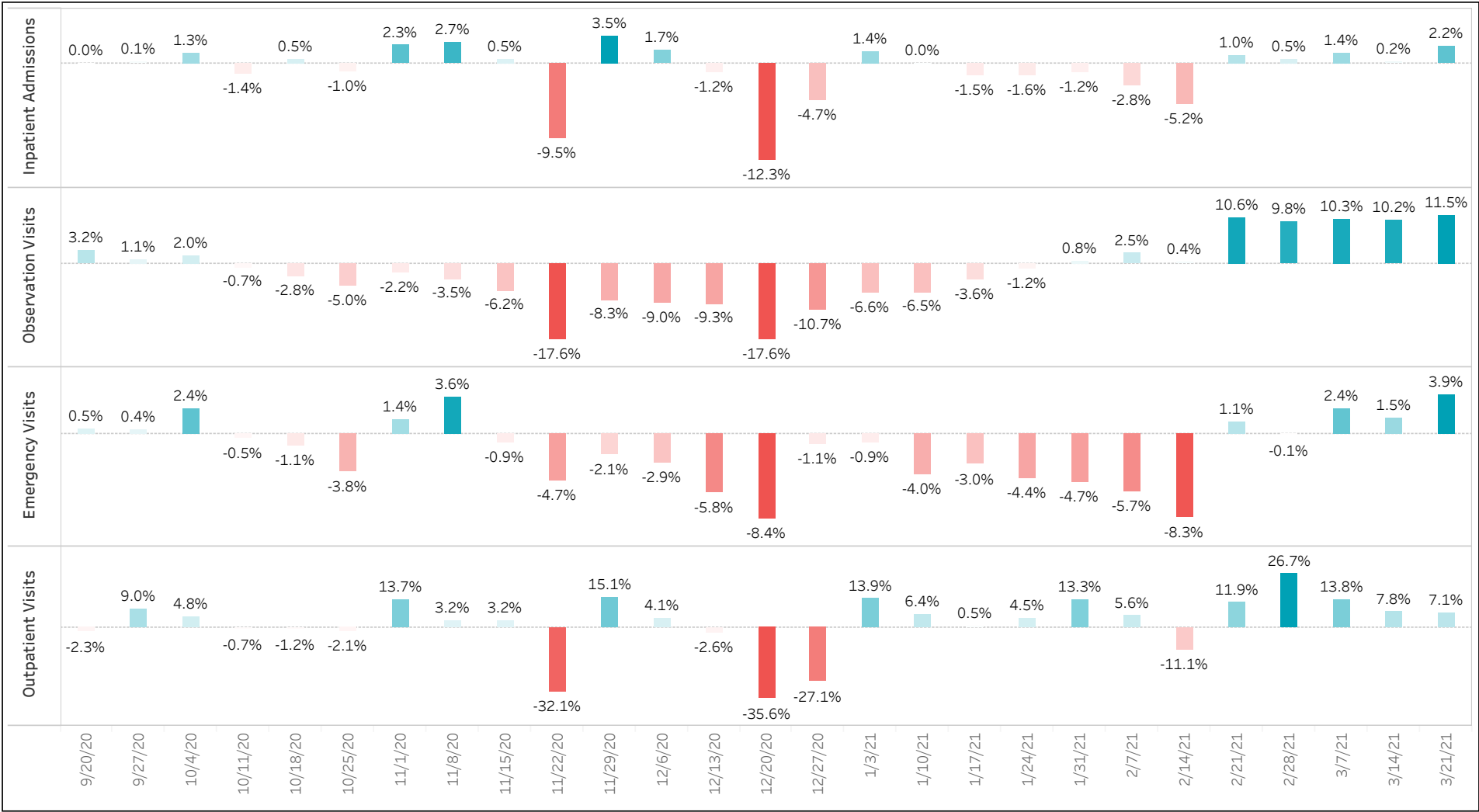
Section 1.1

National Level Recent Volume Changes

Data as of 3/27/2021



Section 1.2
National Level Weekly Volume Changes Compared to Previous 26 Weeks Rolling Average
Data as of 3/27/2021

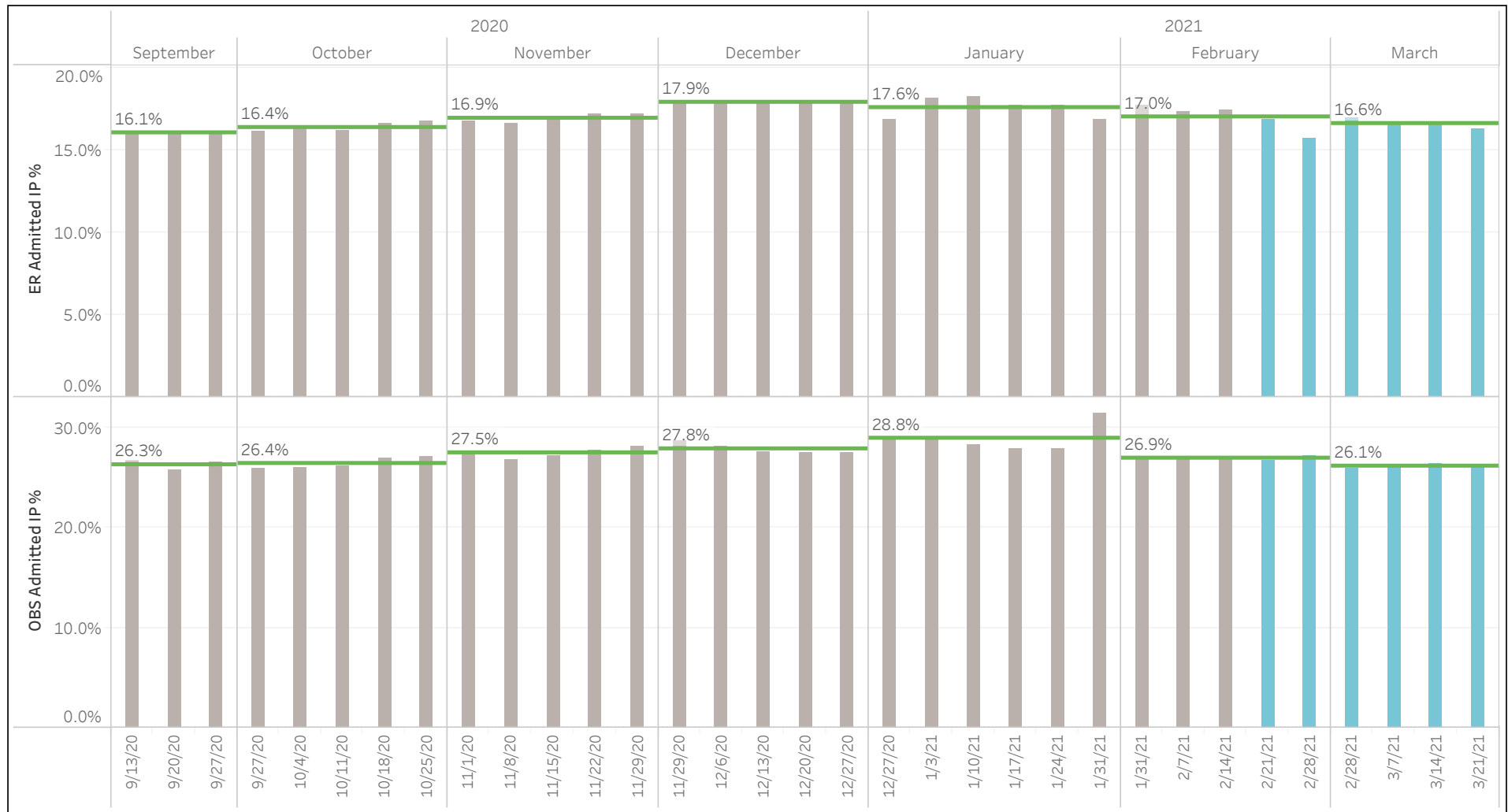


Section 1.3

National Level Inpatient Conversion Rate

Data as of 3/27/2021

Historical Data
New Data



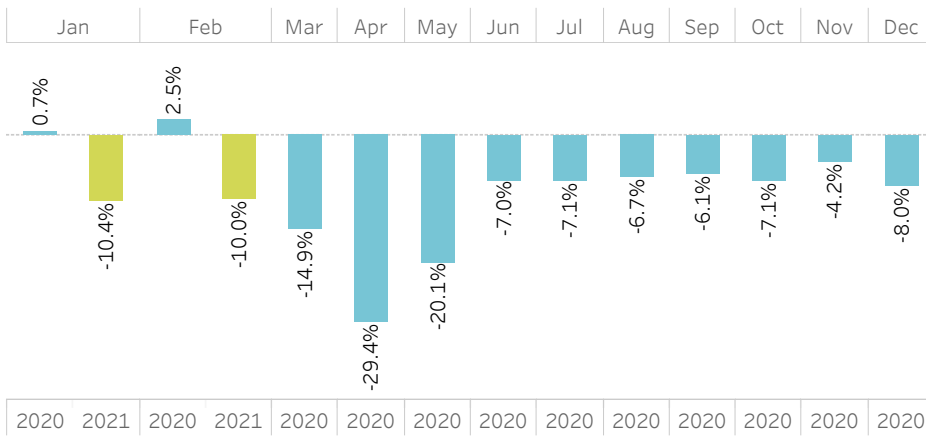
Section 1.4

Monthly Volume Changes Compared to 2019

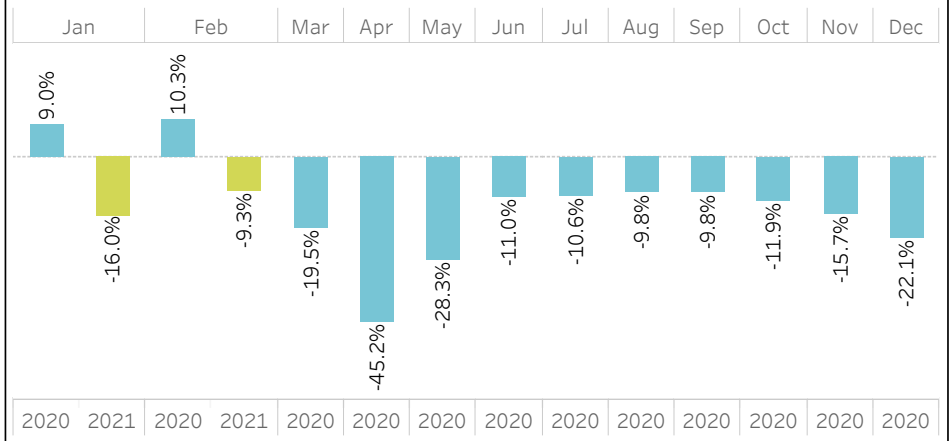
Data as of 2/28/2021

2020
2021

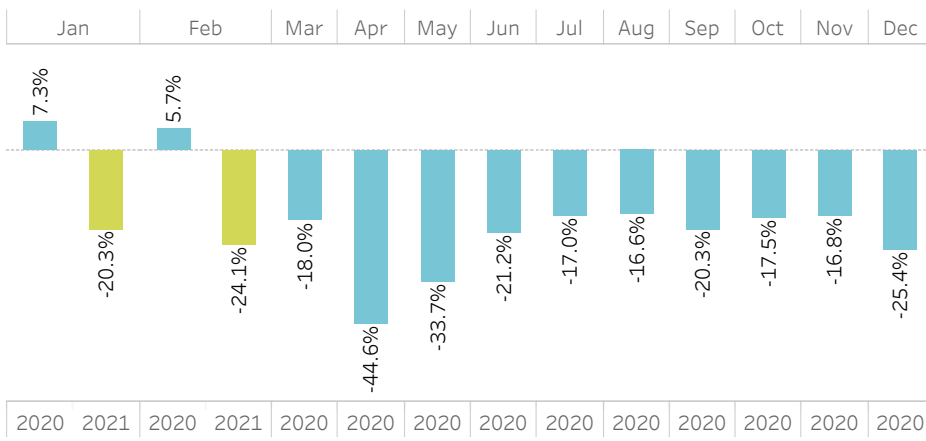
Inpatient Admissions



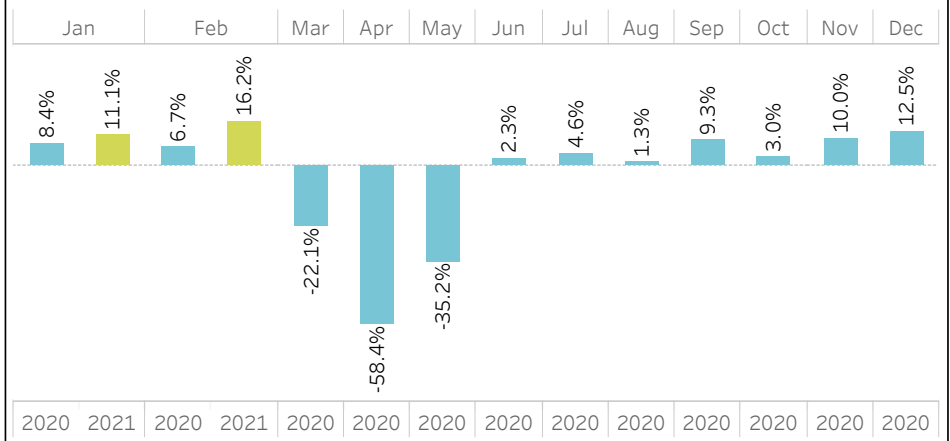
Observation Visits



Emergency Visits



Outpatient Visits



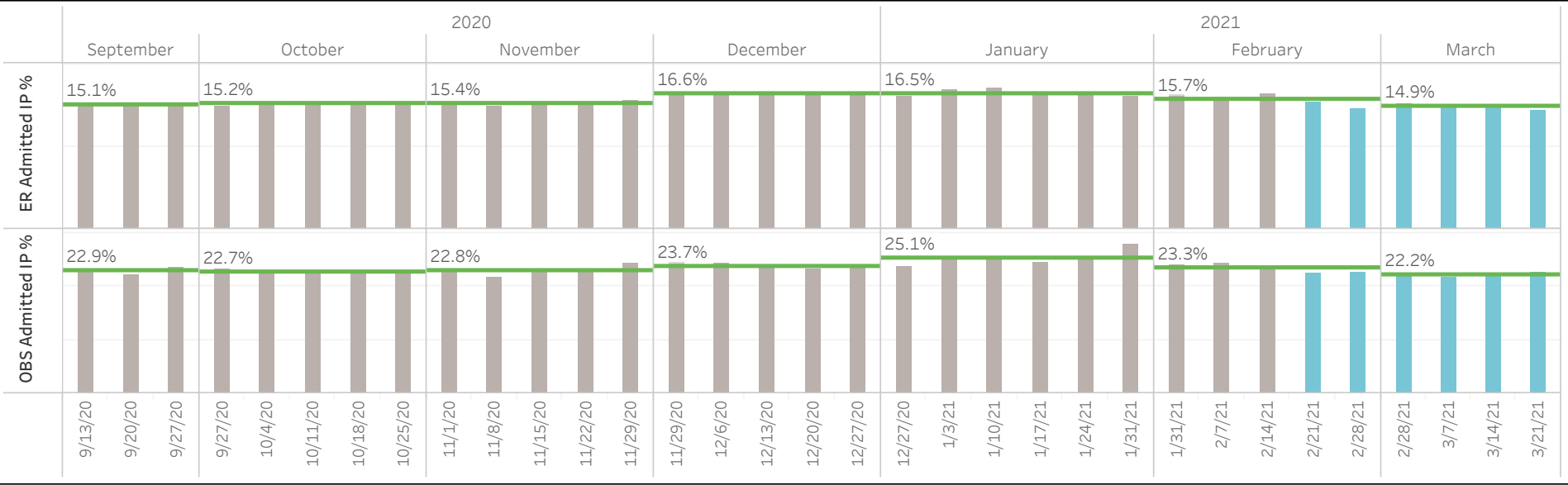
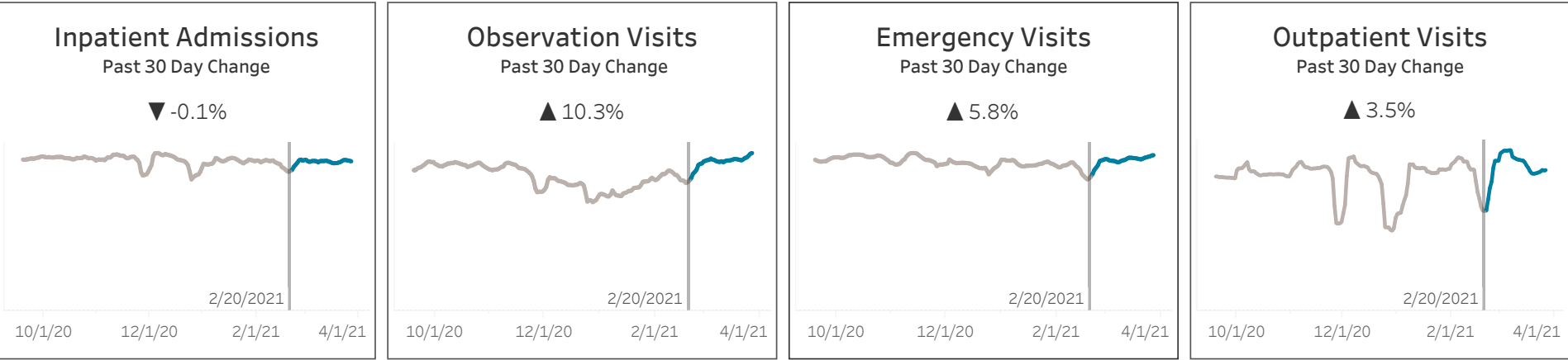
Section 2.1

Census Region-South Recent Volume Changes

Data as of 3/27/2021

Historical Data

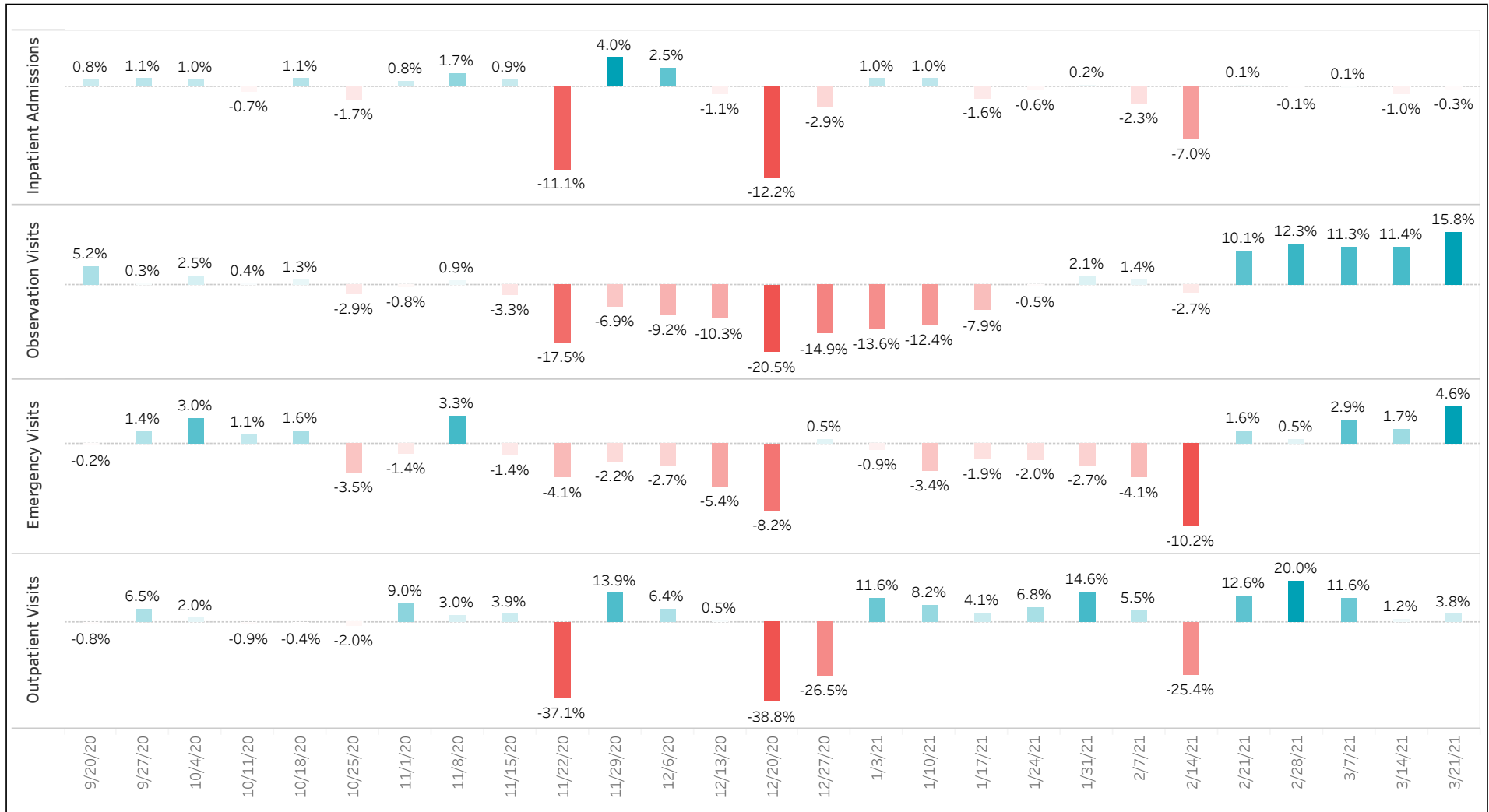
New Data



Section 2.2

Census Region - South Weekly Volume Changes Compared to Previous 26 Weeks Rolling Average

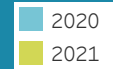
Data as of 3/27/2021



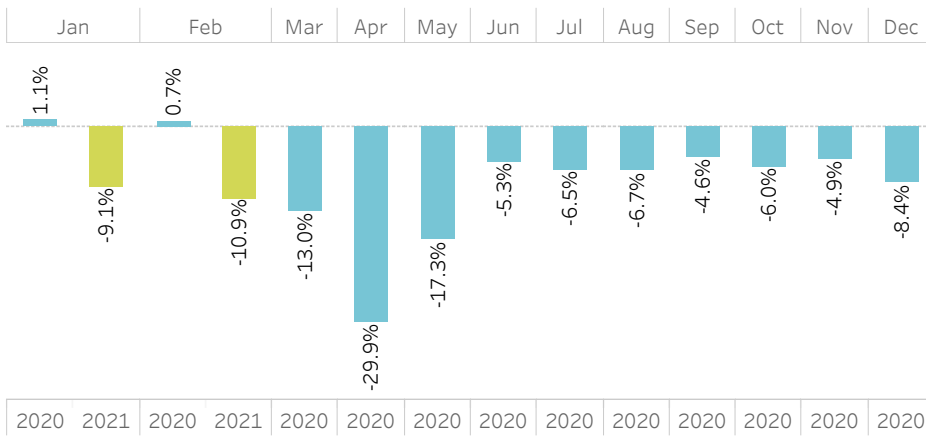
Section 2.3

Census Region - South Monthly Volume Changes Compared to 2019

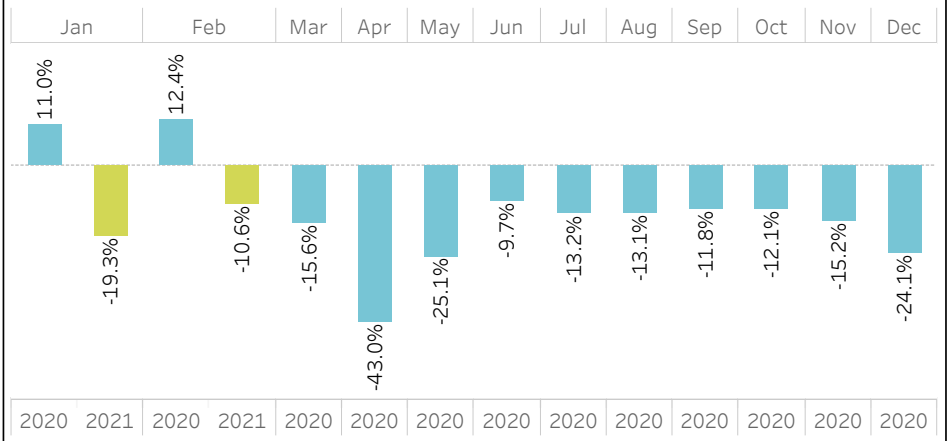
Data as of 2/28/2021



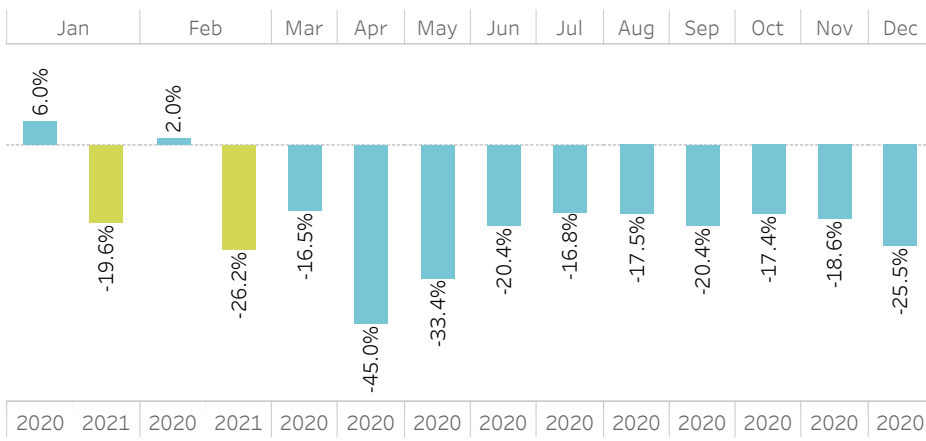
Inpatient Admissions



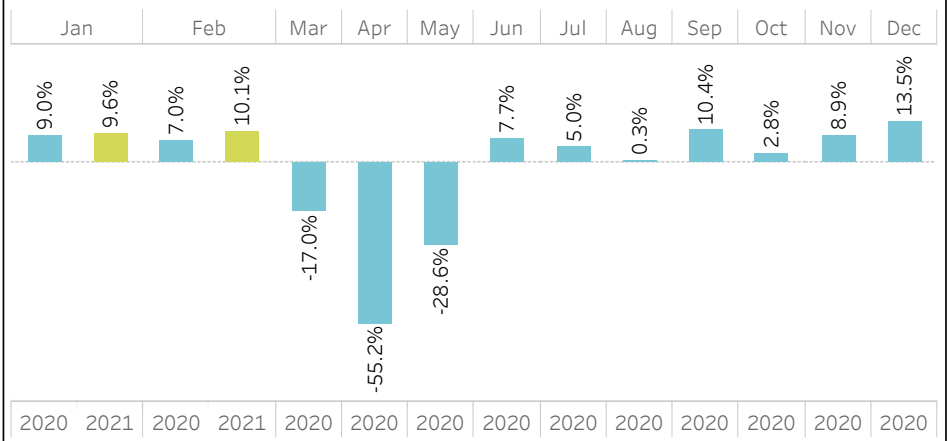
Observation Visits

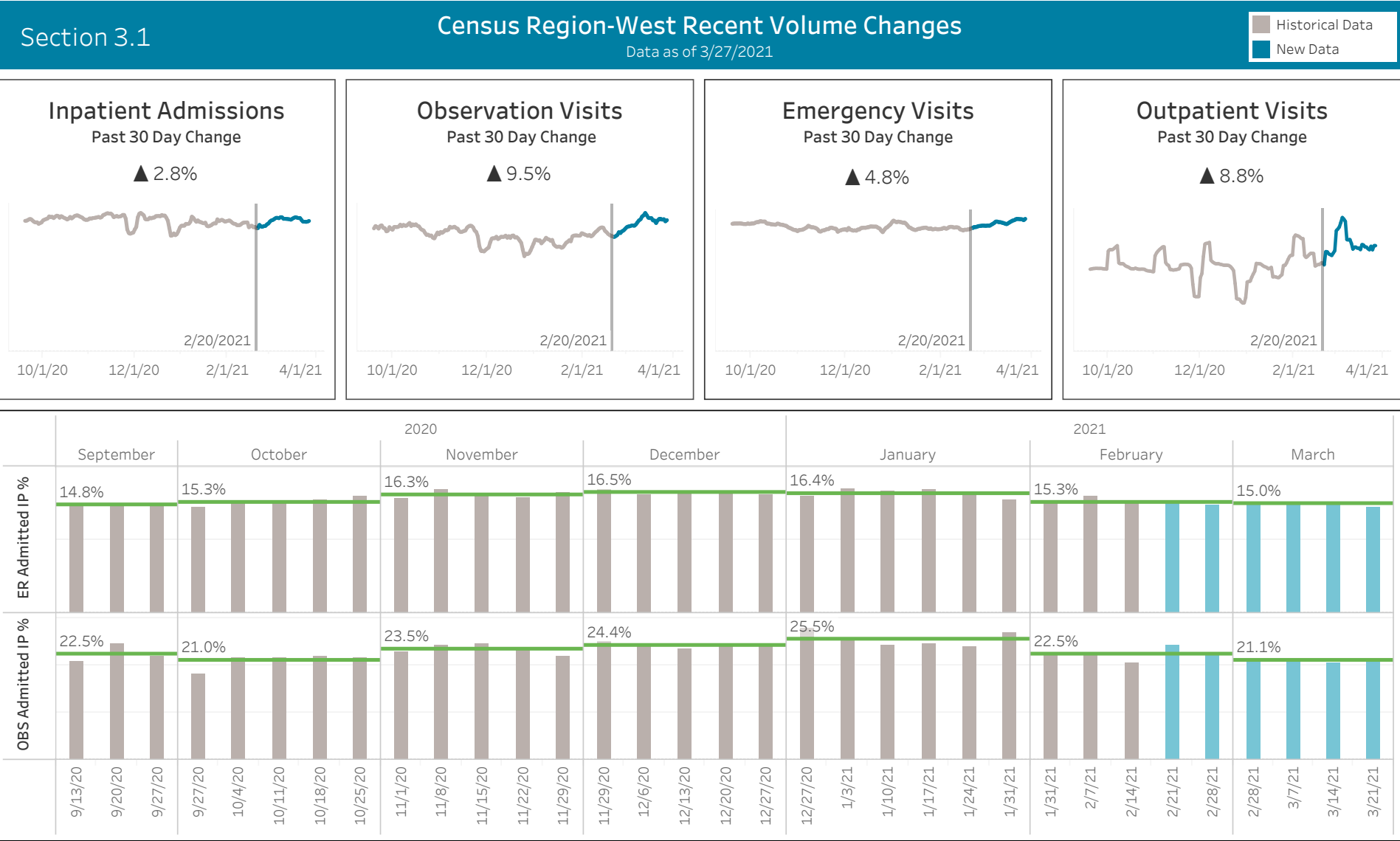


Emergency Visits



Outpatient Visits

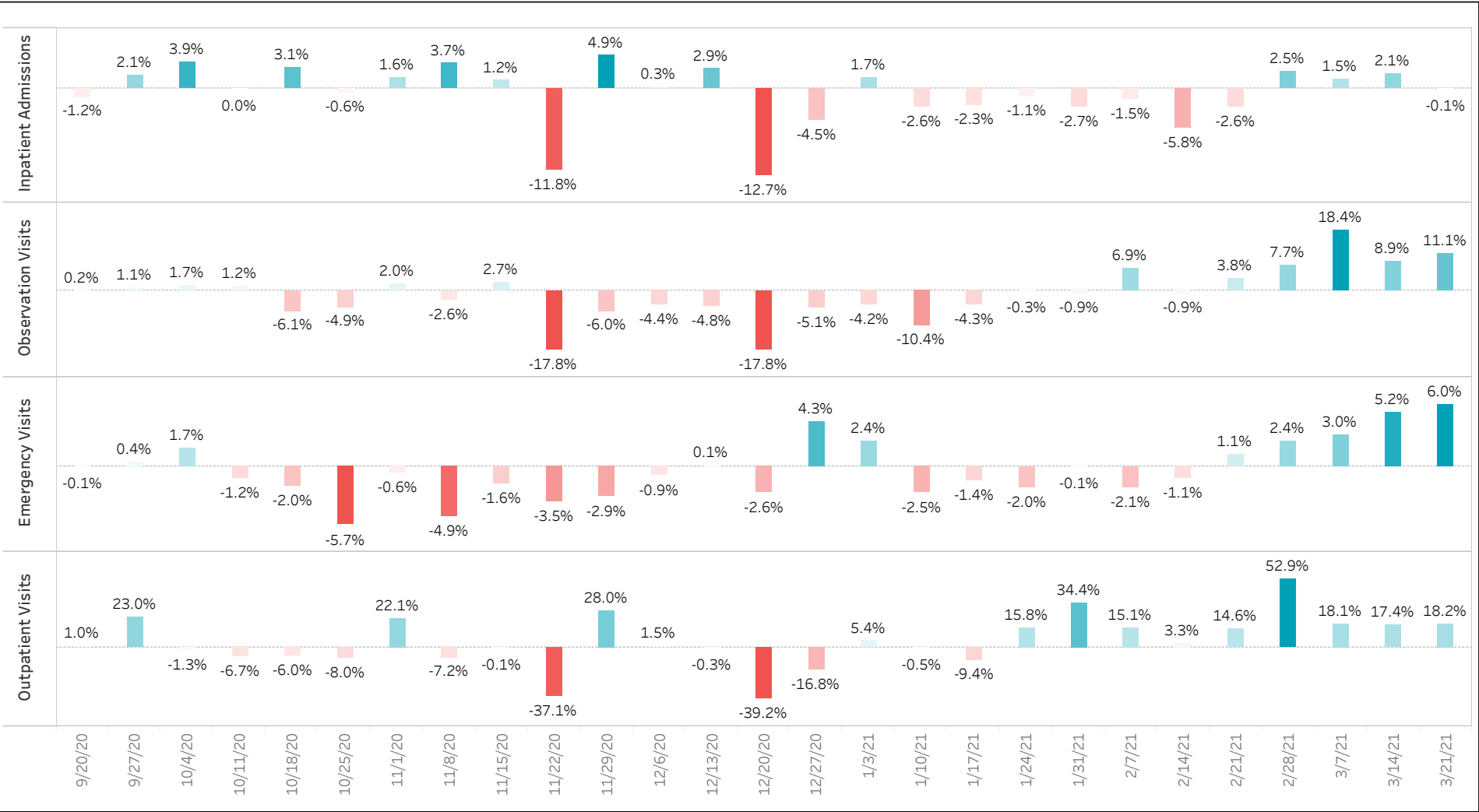




Section 3.2

Census Region - West Weekly Volume Changes
Compared to Previous 26 Weeks Rolling Average

Data as of 3/27/2021



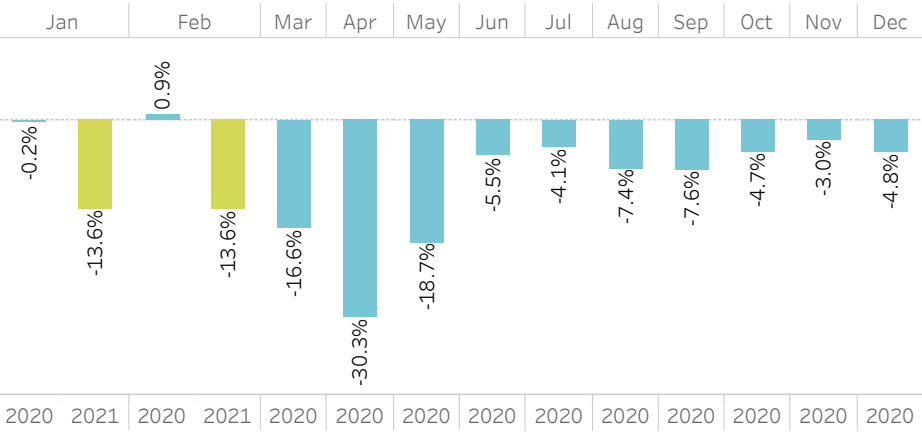
Section 3.3

Census Region - West Monthly Volume Changes Compared to 2019

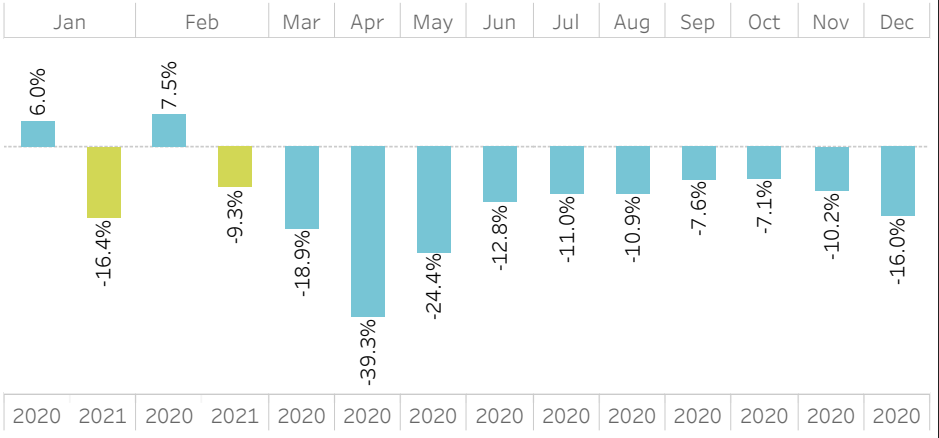
Data as of 2/28/2021



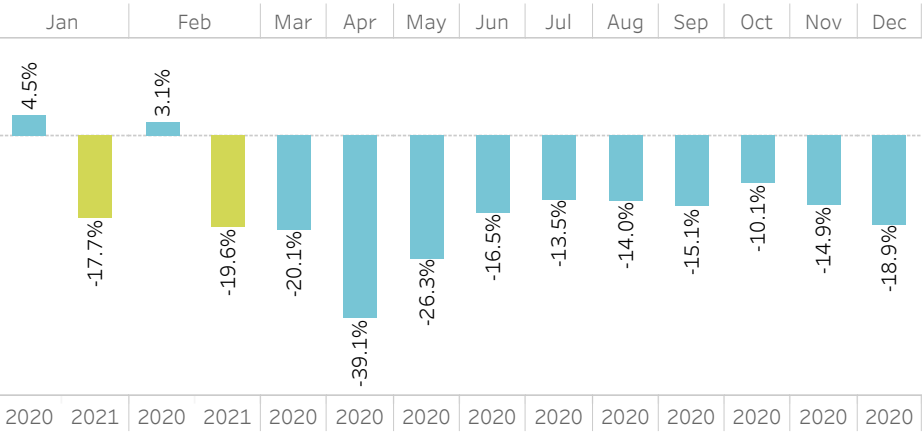
Inpatient Admissions



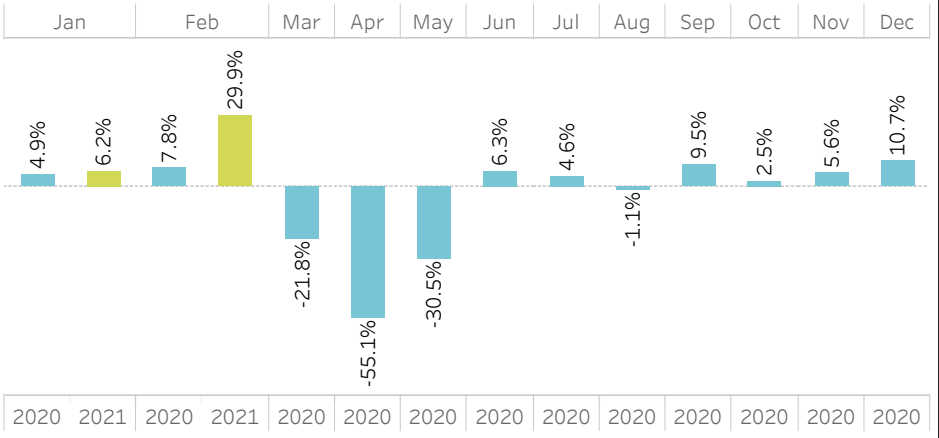
Observation Visits

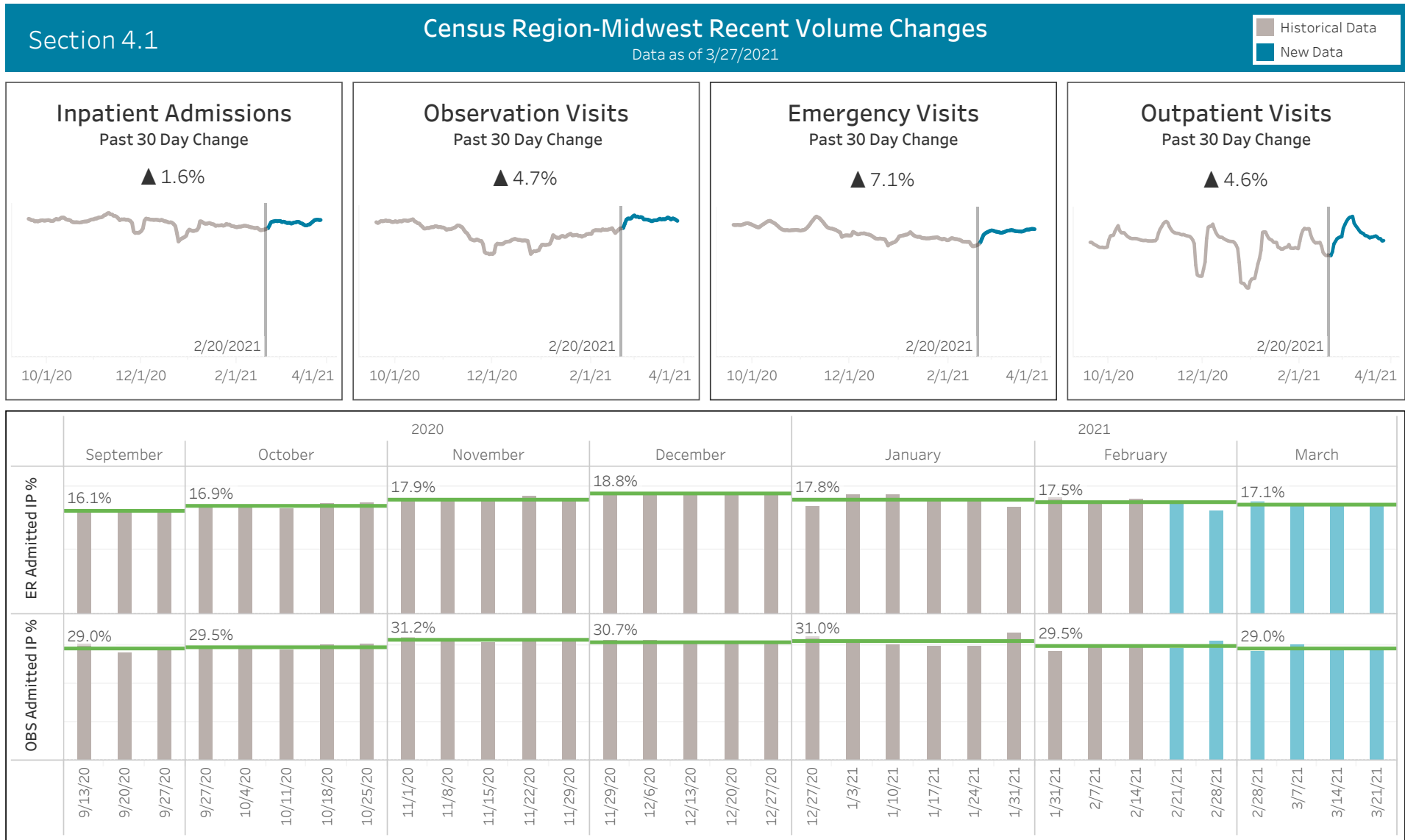


Emergency Visits



Outpatient Visits



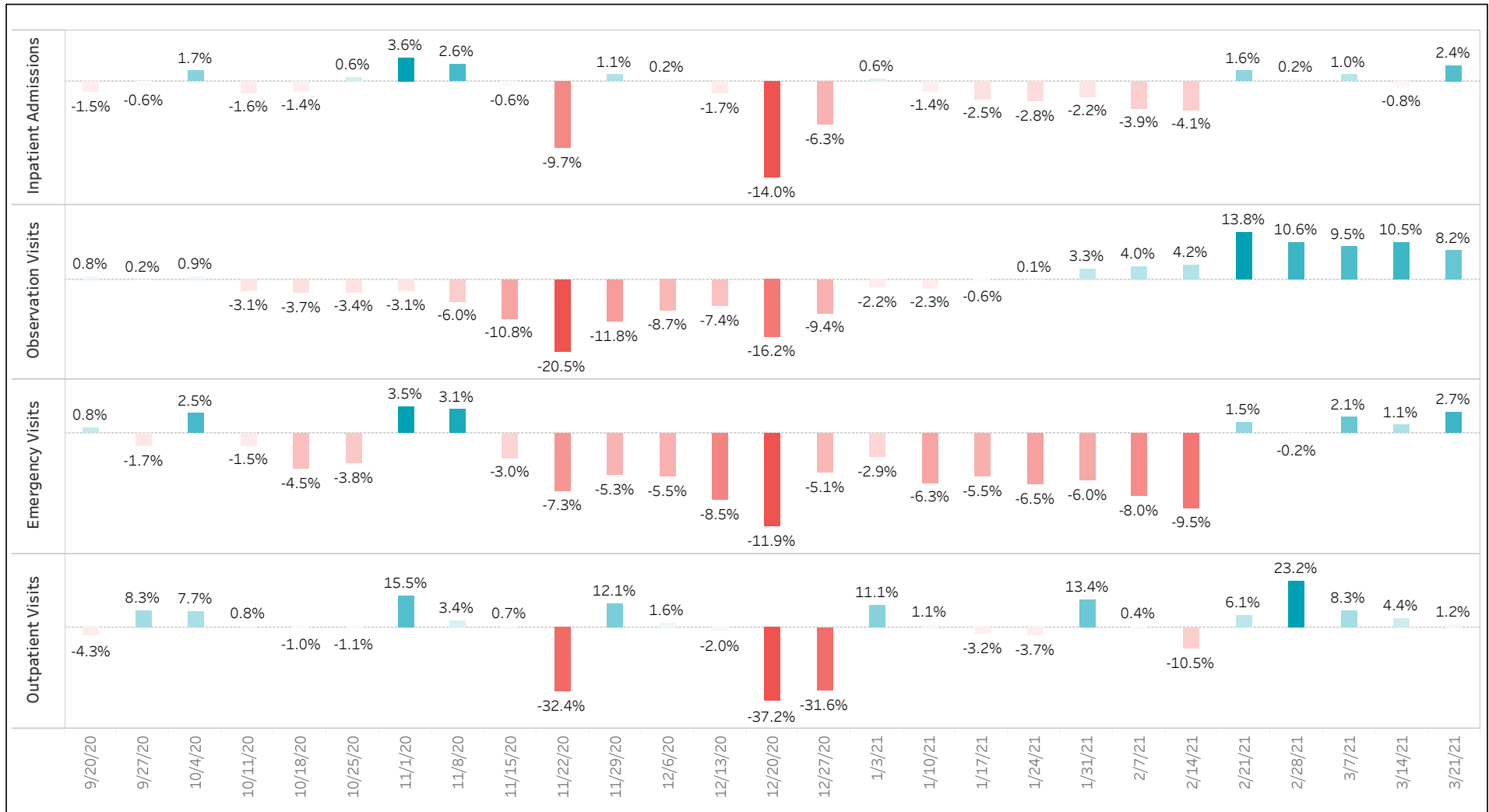


1	2	3	4	5	6	7	8	9	10	11	12	13	14	15	16	17	18	19	20	21	22	23	24	25	26	27
---	---	---	---	---	---	---	---	---	----	----	----	----	----	----	----	----	----	----	----	----	----	----	----	----	----	----

Section 4.2

Census Region - Midwest Weekly Volume Changes Compared to Previous 26 Weeks Rolling Average

Data as of 3/27/2021



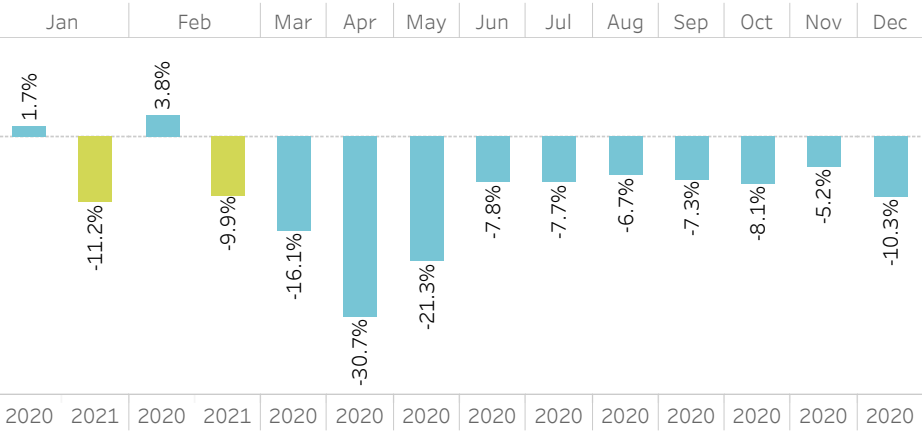
Section 4.3

Census Region - Midwest Monthly Volume Changes Compared to 2019

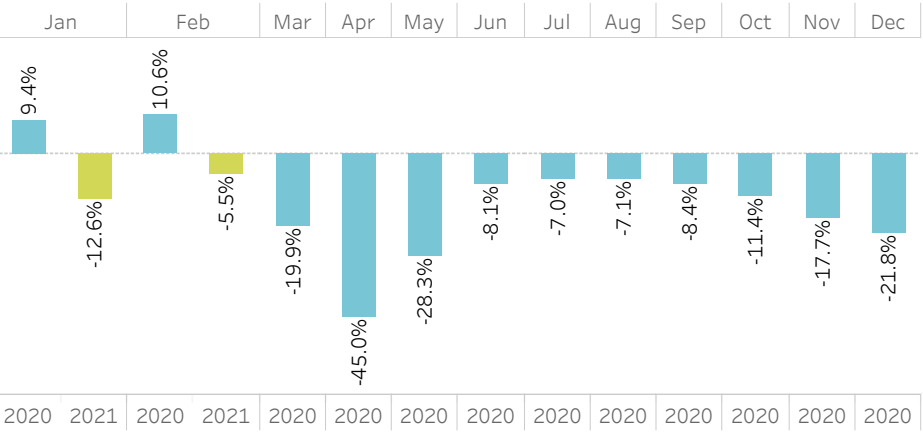
Data as of 2/28/2021



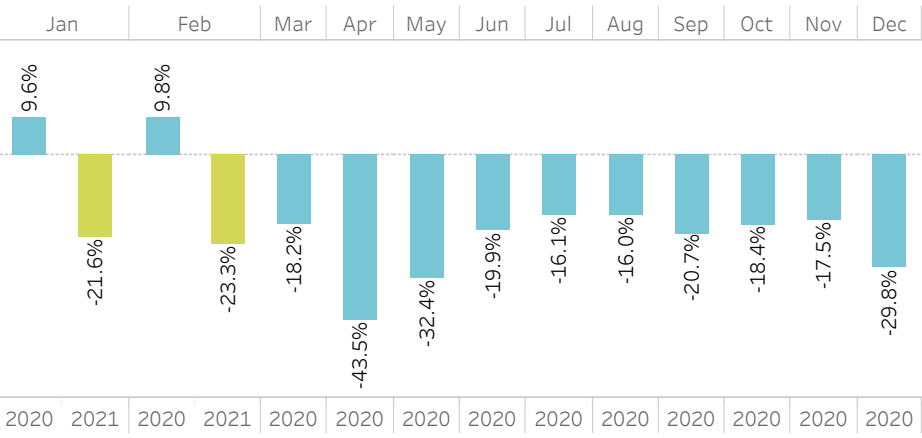
Inpatient Admissions



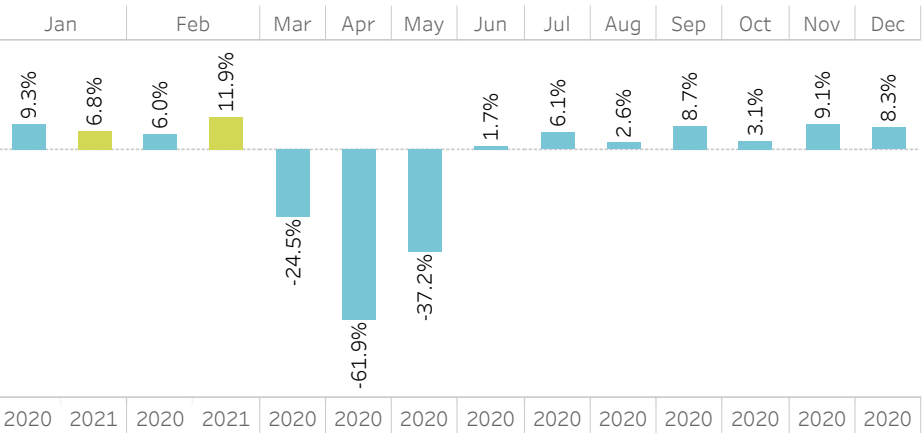
Observation Visits



Emergency Visits



Outpatient Visits



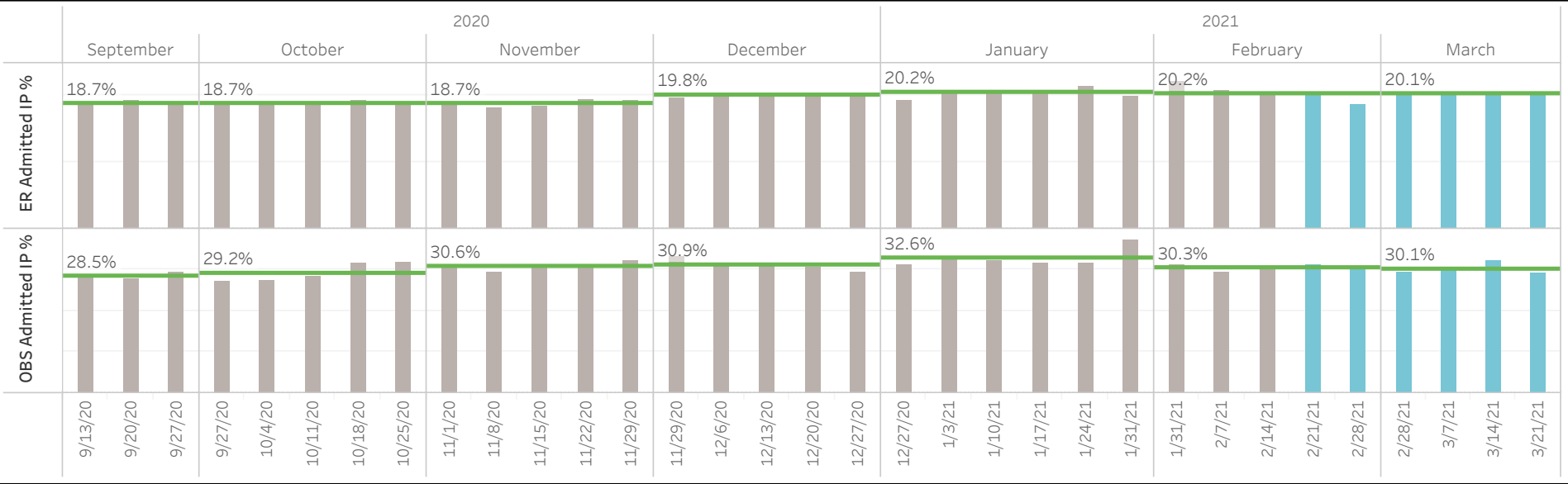
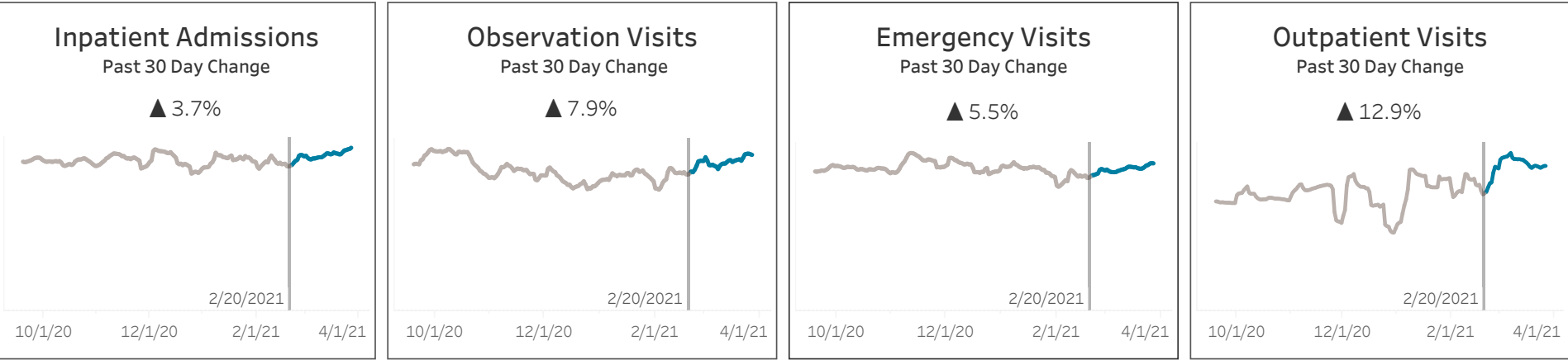
Section 5.1

Census Region-Northeast Recent Volume Changes

Historical Data

New Data

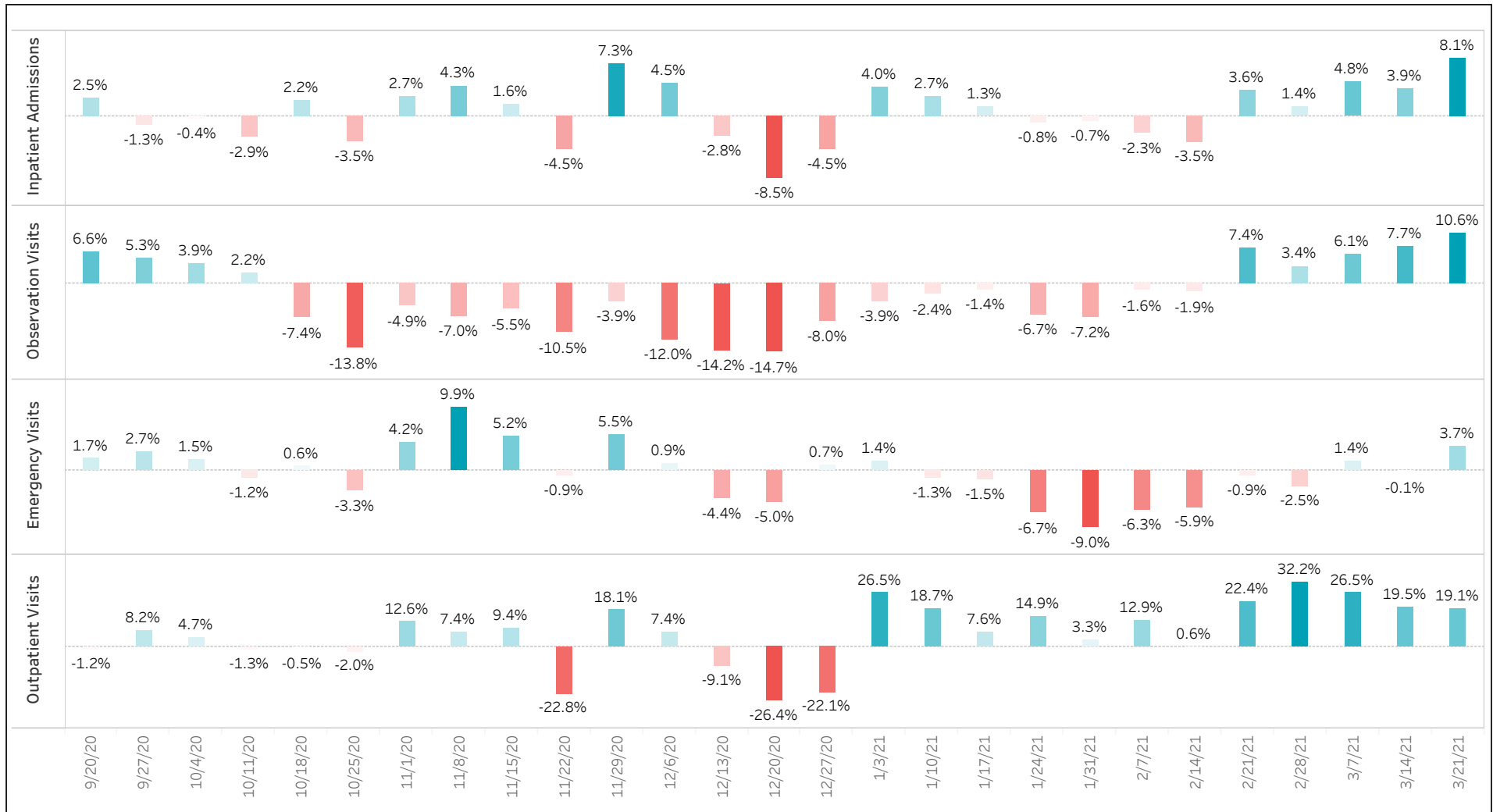
Data as of 3/27/2021



Section 5.2

Census Region - Northeast Weekly Volume Changes Compared to Previous 26 Weeks Rolling Average

Data as of 3/27/2021



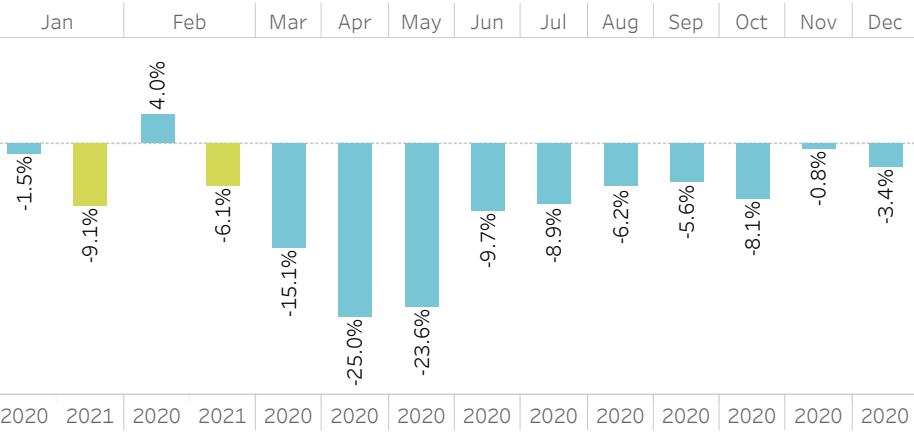
Section 5.3

Census Region - Northeast Monthly Volume Changes Compared to 2019

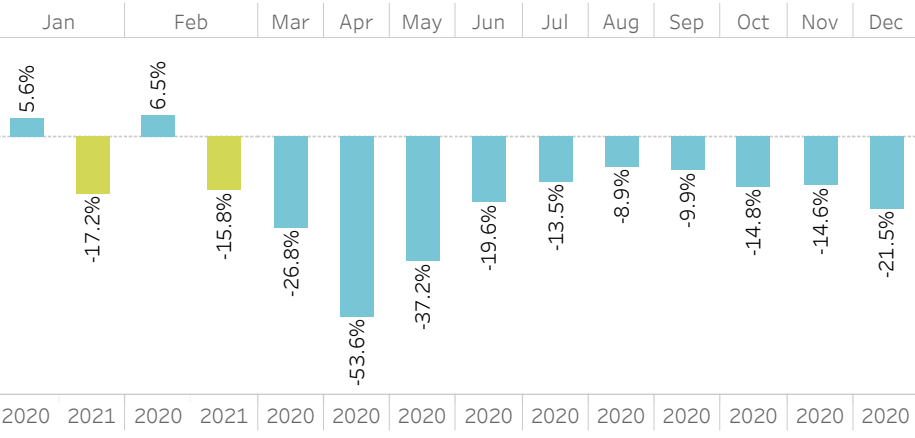
Data as of 2/28/2021

2020
2021

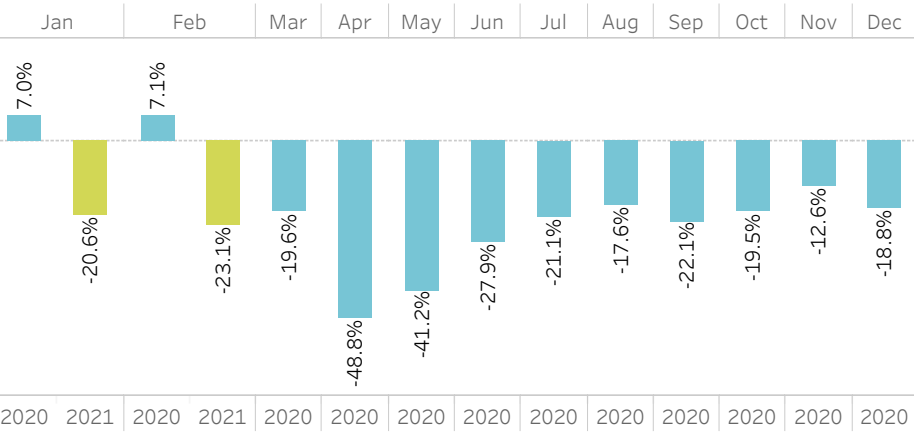
Inpatient Admissions



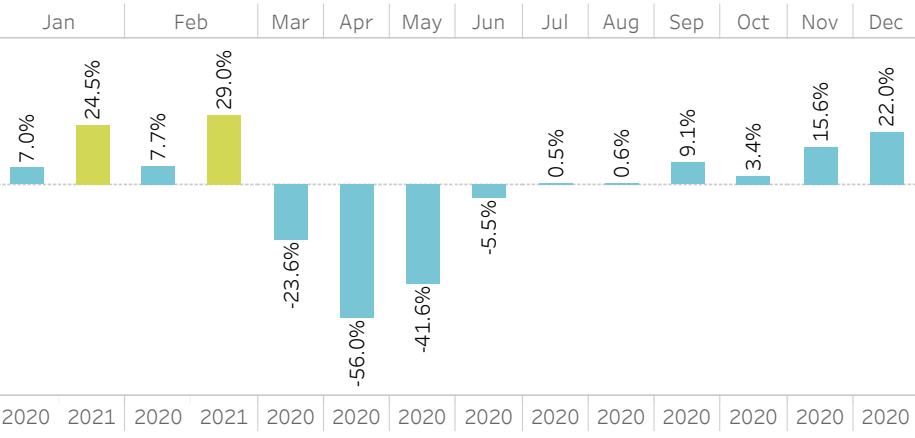
Observation Visits



Emergency Visits



Outpatient Visits

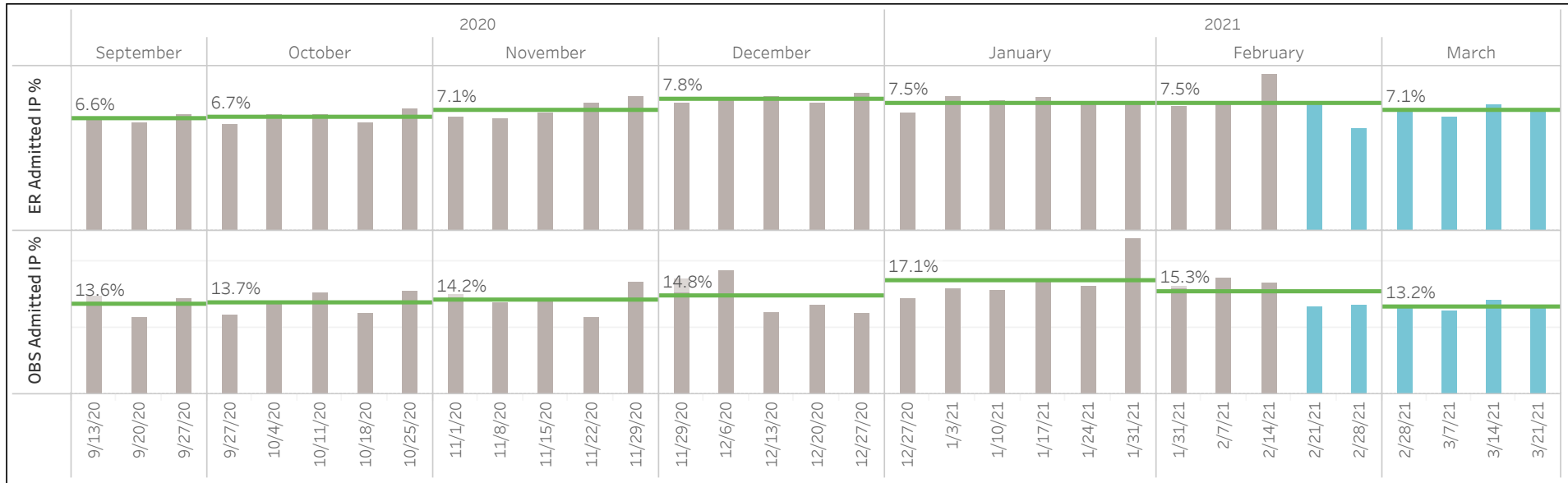
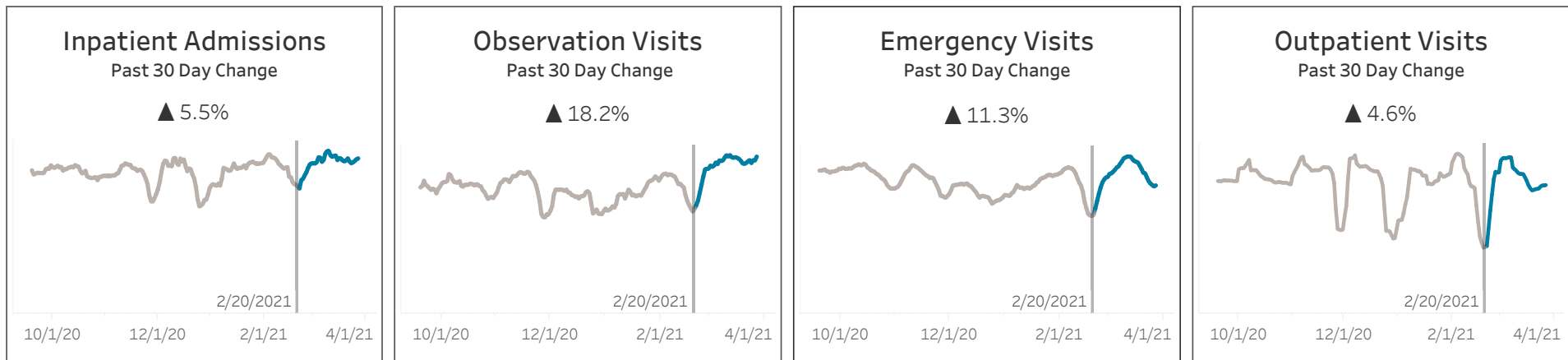


Section 6.1

National Level Children's Hospitals Recent Volume Changes
 Data as of 3/27/2021

Children's Hospital #
 13

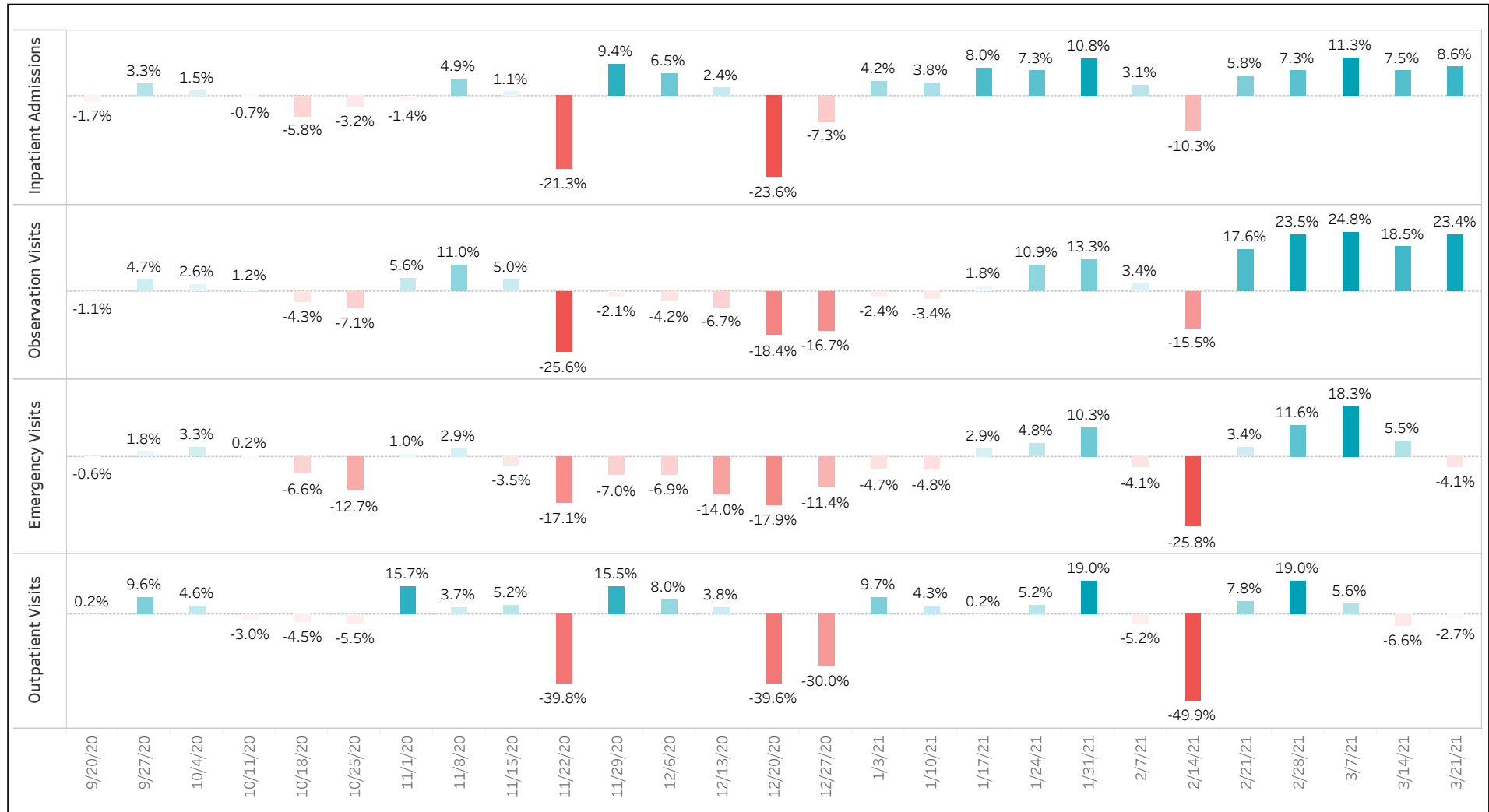
Historical Data
 New Data



Section 6.2

Children's Hospital Weekly Changes Compared to Previous 26 Weeks Rolling Average

Data as of 3/27/2021



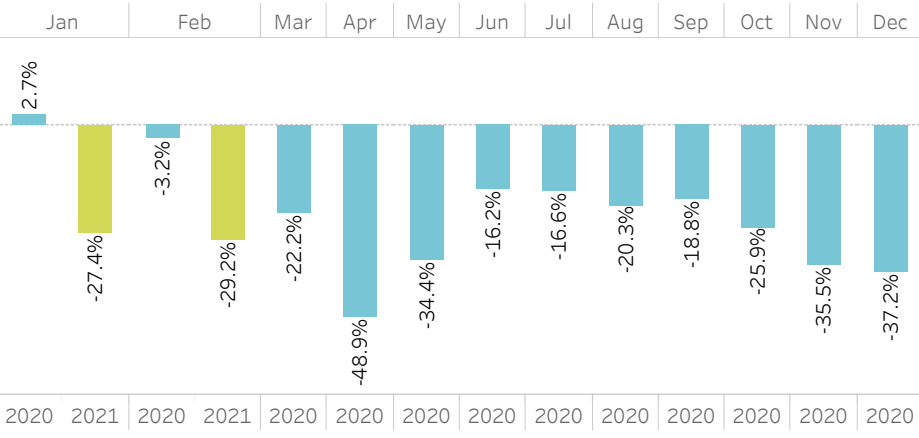
Section 6.3

Children’s Hospital Monthly Volume Changes Compared to 2019

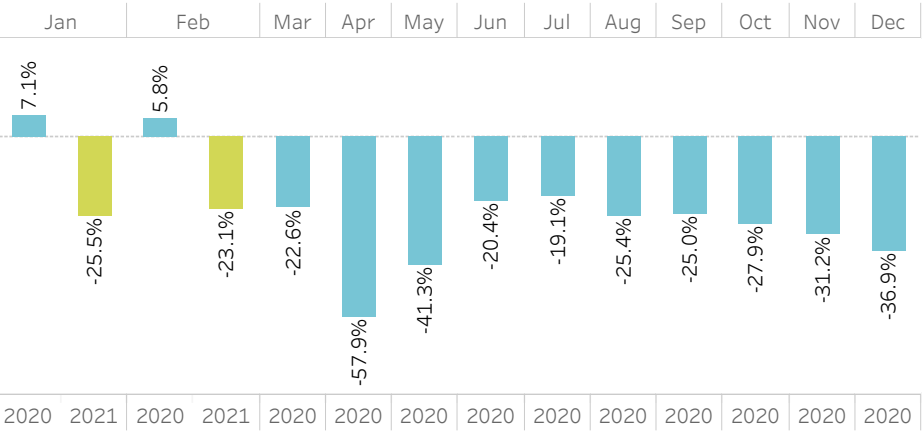
Data as of 2/28/2021



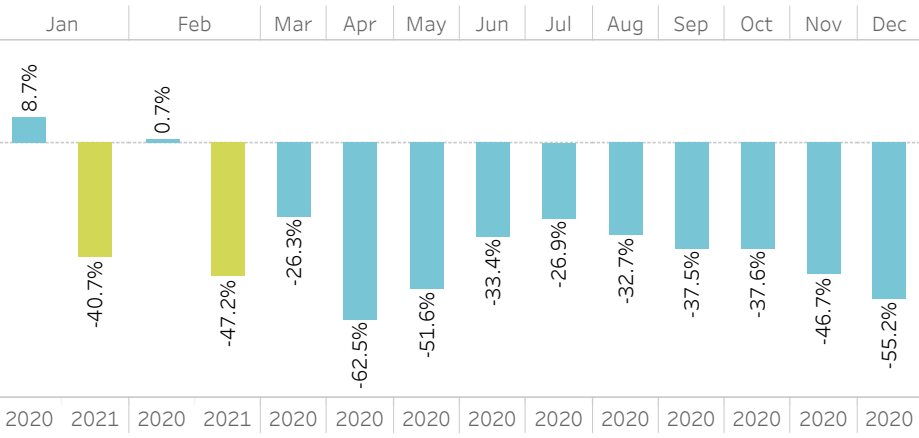
Inpatient Admissions



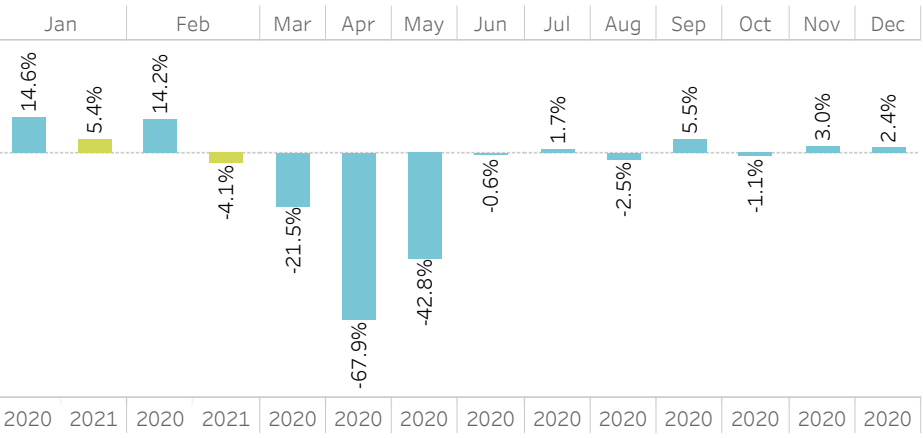
Observation Visits

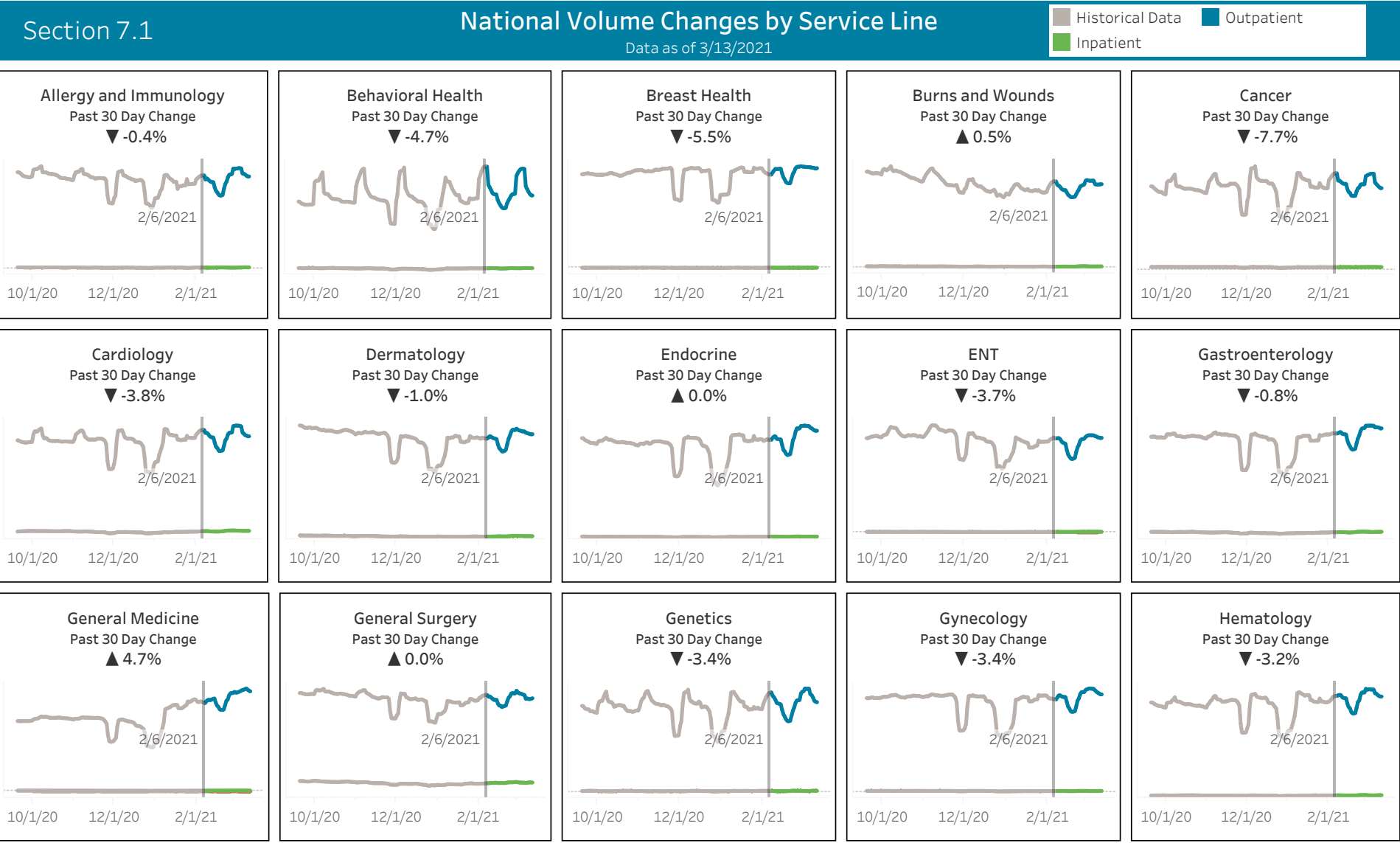


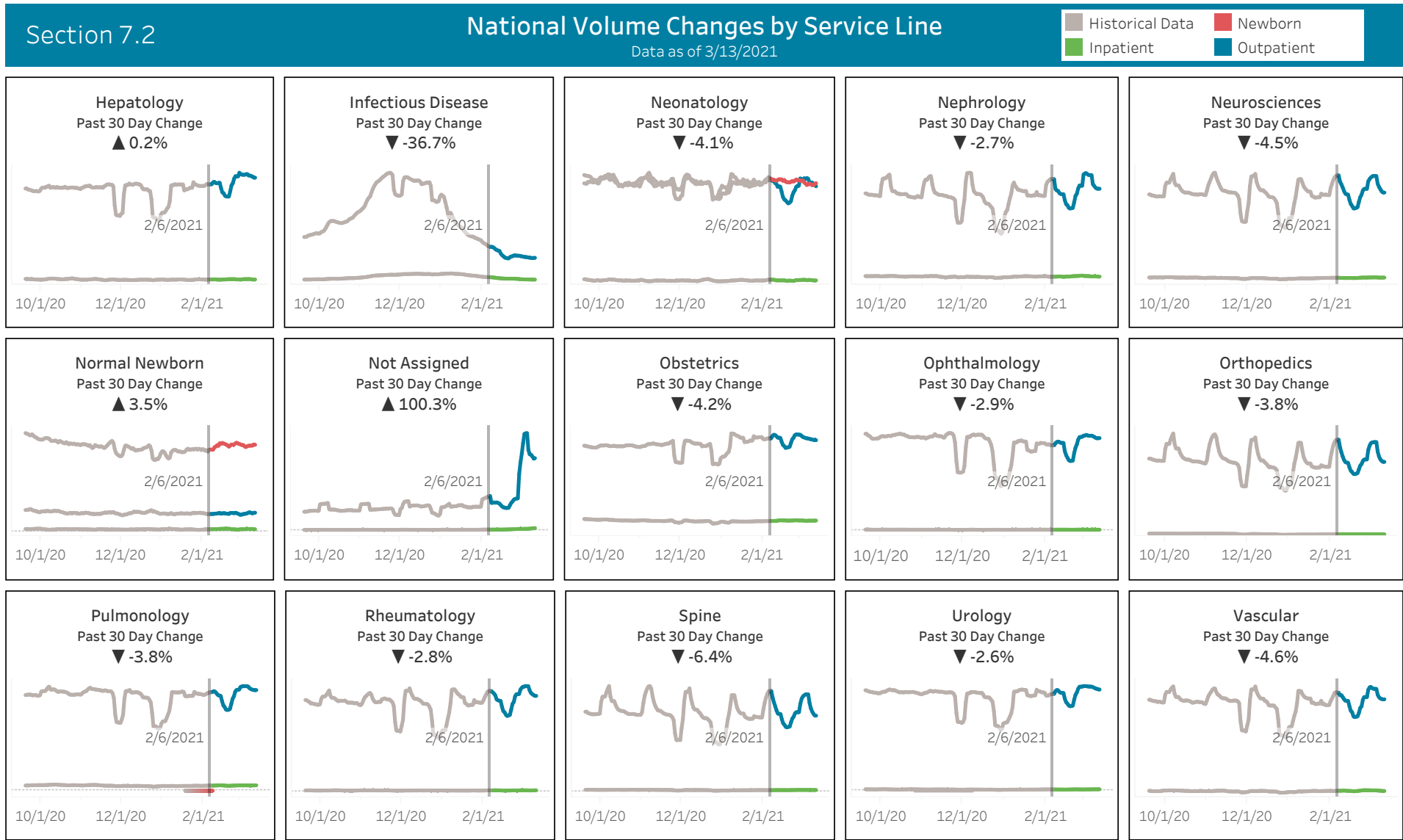
Emergency Visits

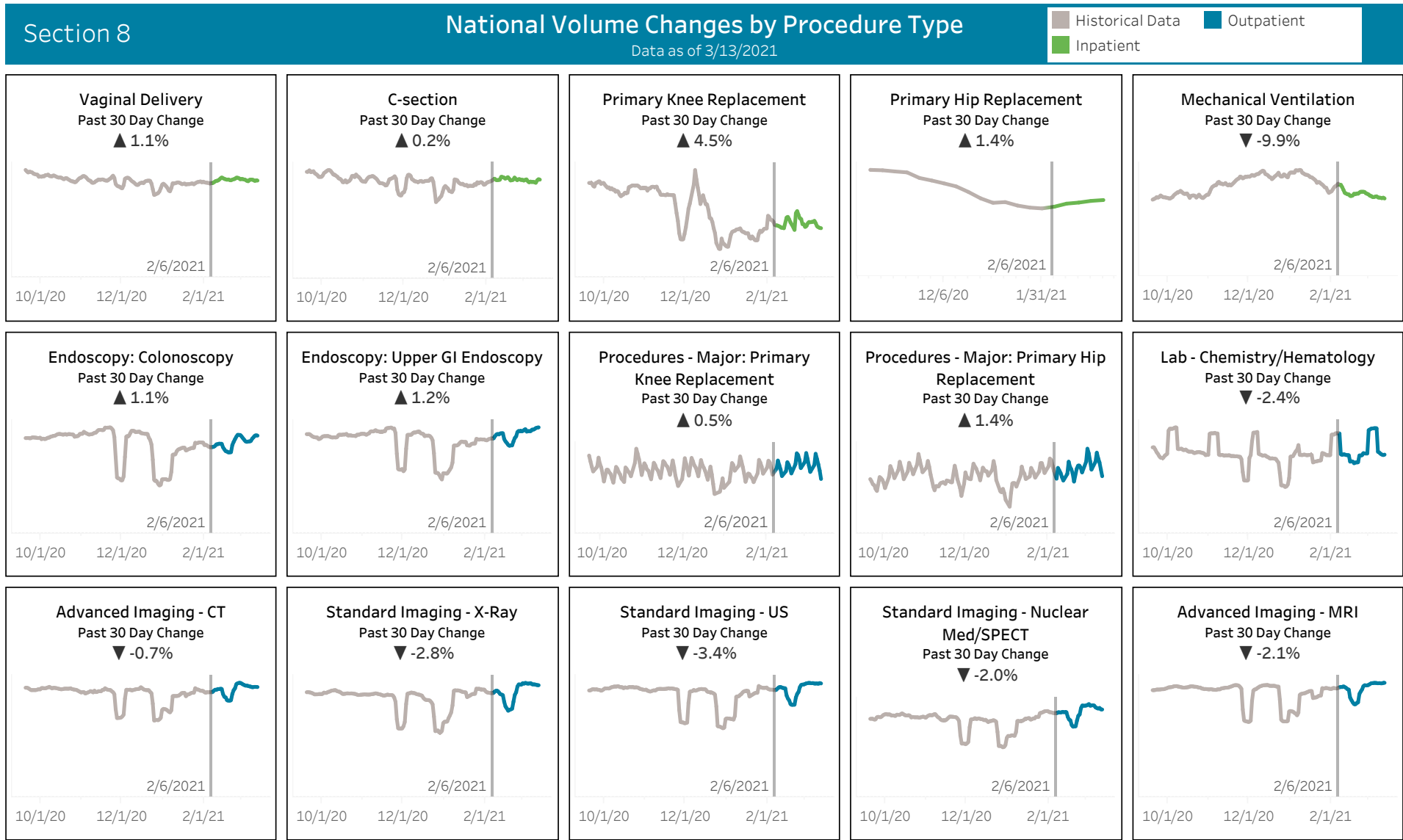


Outpatient Visits





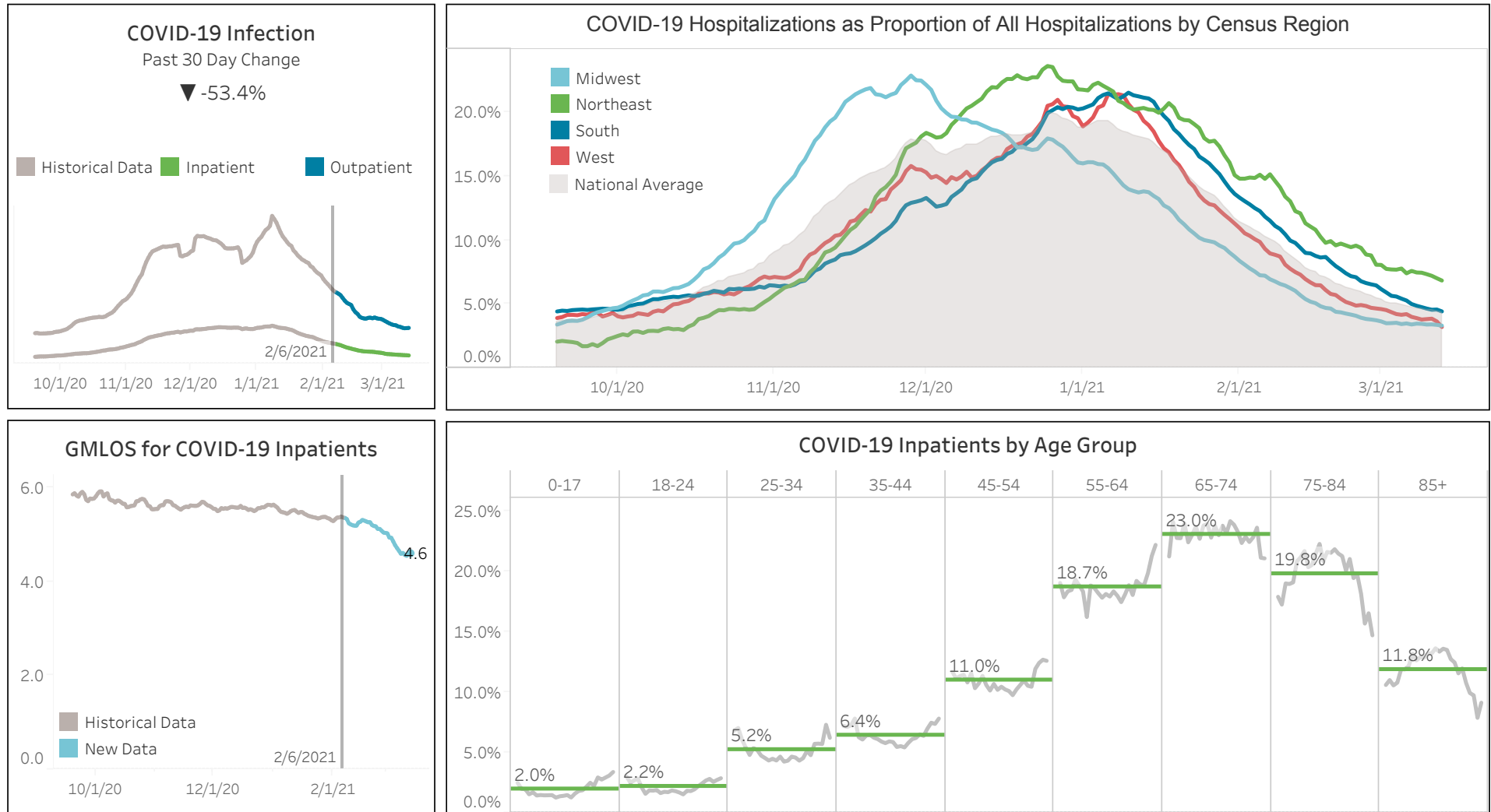




Section 9

COVID-19 Summary

Data as of 3/13/2021



Section 10.1

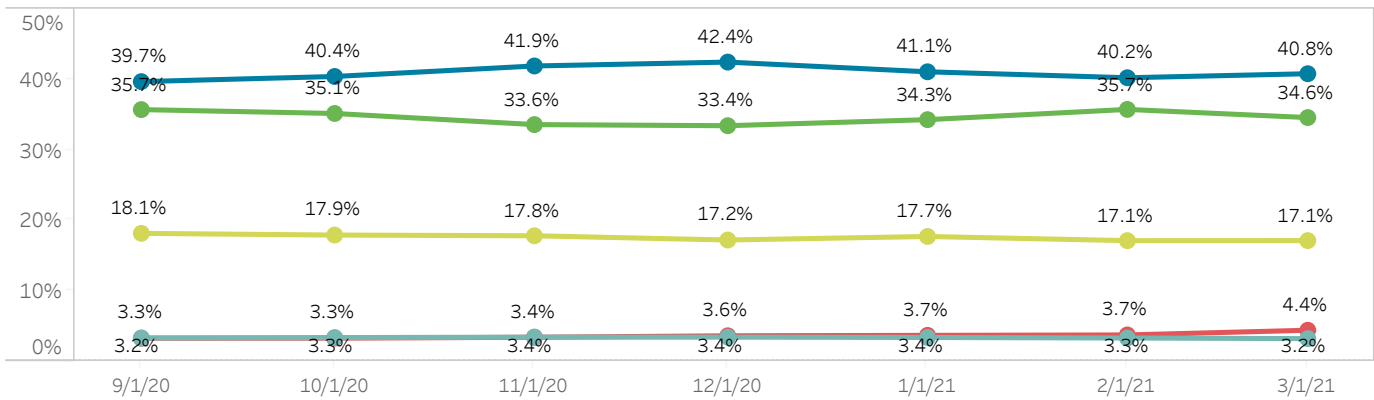
Payor Mix Monthly Analysis by Volume

Data as of 3/27/2021

Payor Mix is calculated based on encounter volume and the patient’s primary insurance plan.

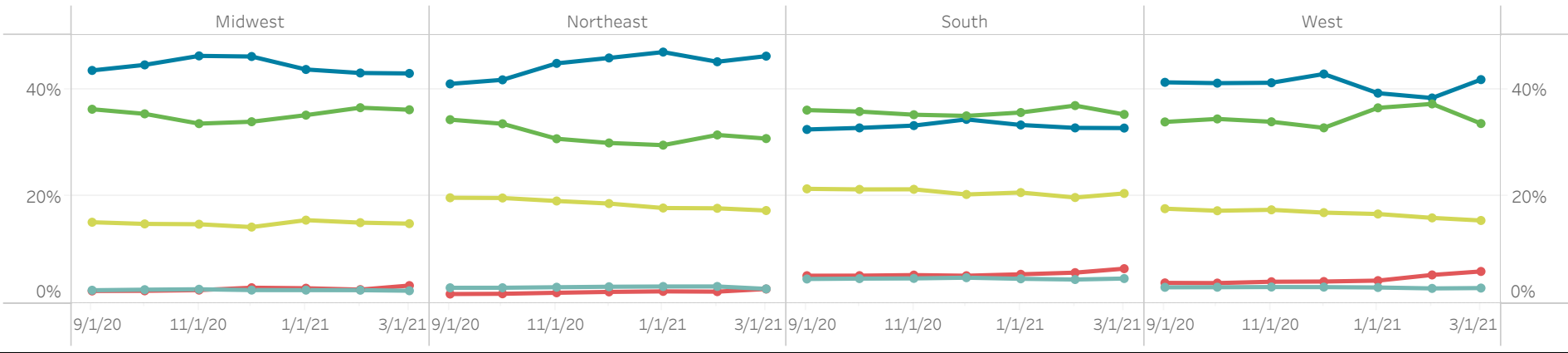
Nightly updates are received for encounter information. As providers validate or obtain insurance for patients it is added to the data set. We expect recent Self Pay numbers to be higher and to decrease over time as the insurance is updated.

Monthly Payor Mix by Volume of Encounters



Medicaid/Medicaid Managed Care Medicare/Medicare Managed Care Other Self Pay Private Health Insurance

Census Region Monthly Payor Mix by Volume of Encounters



Section 10.2

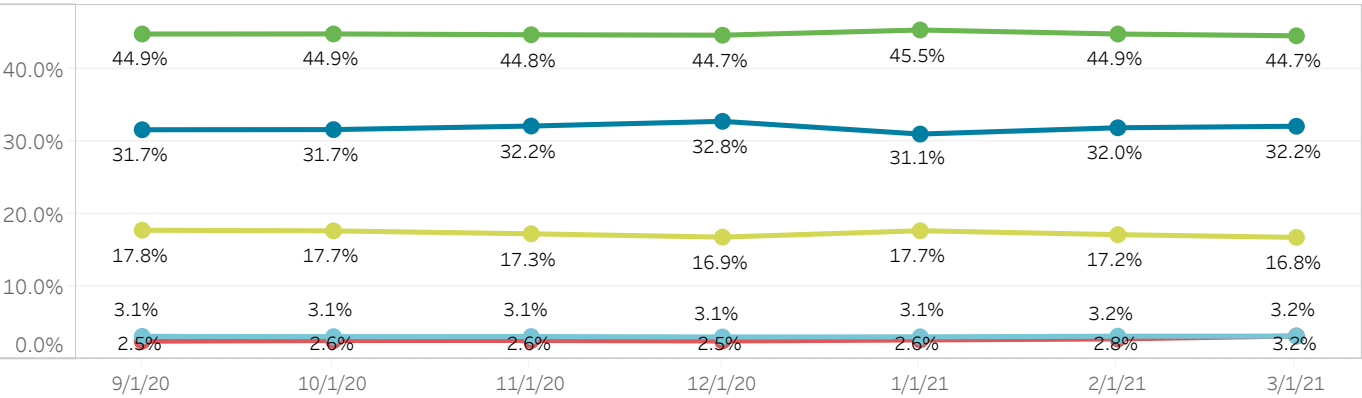
Payor Mix Monthly Analysis

Data as of 3/27/2021

Payor Mix is calculated based on the total charges on the encounter and the patient's primary insurance plan.

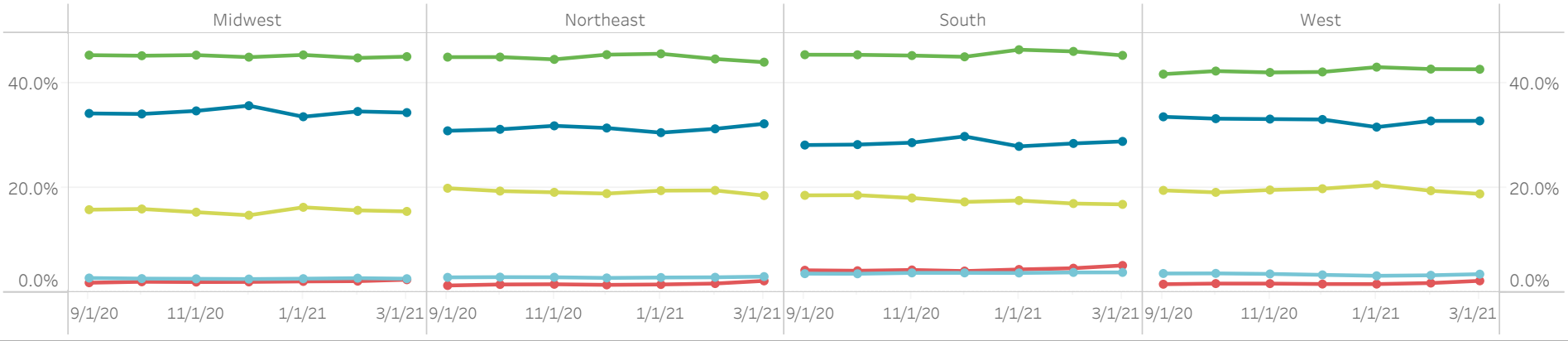
Nightly updates are received for encounter information. As providers validate or obtain insurance for patients it is added to the data set. We expect recent SelfPay numbers to be higher and to decrease over time as the insurance is updated.

Monthly Payor Mix by Gross Patient Revenue



Medicaid/Medicaid Managed Care Medicare/Medicare Managed Care Other Private Health Insurance Self Pay

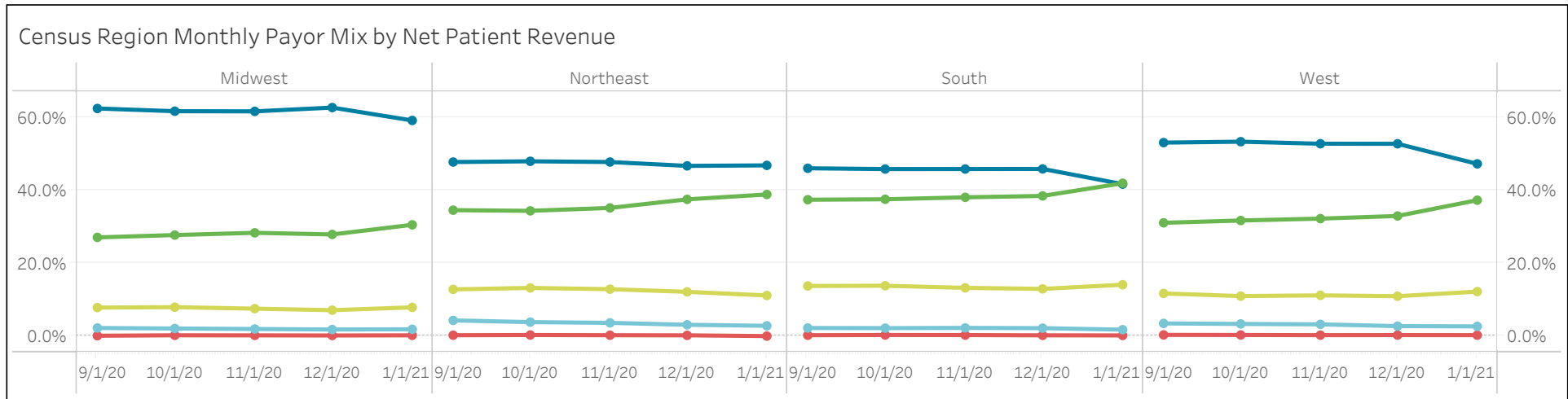
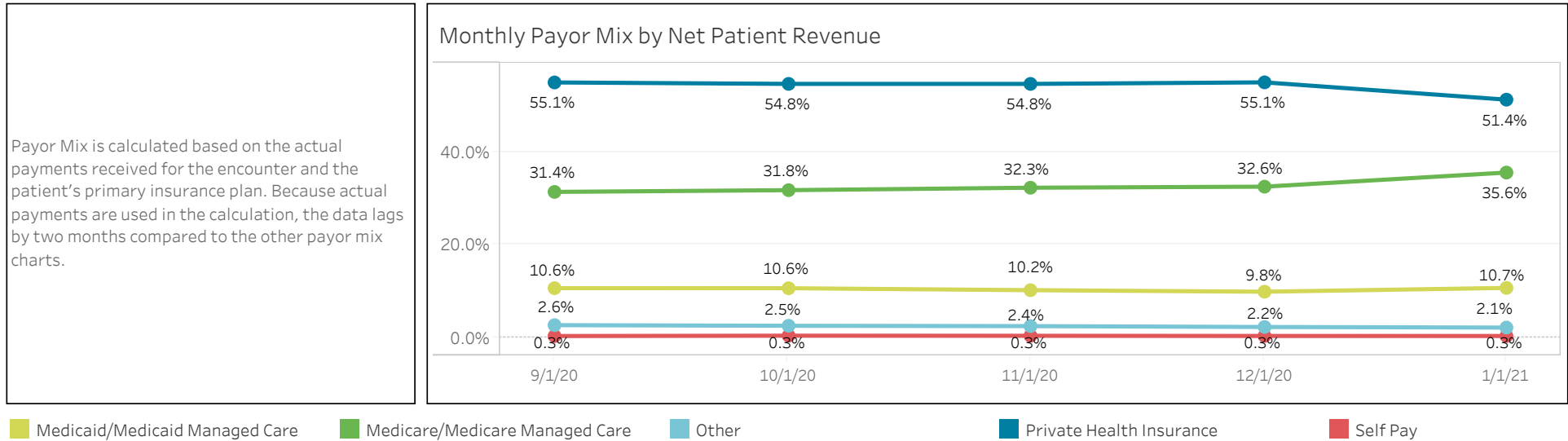
Census Region Monthly Payor Mix by Gross Patient Revenue



Section 10.3

Payor Mix Monthly Analysis

Data as of 1/31/2021



Methodology

Data Source: 75 StrataSphere® health systems with StrataJazz® Decision Support. All hospital billing encounters with nonzero charges were included. Once the encounter has charges greater than zero, it will then be included in the encounter count.

Patient Types include inpatient, observation patient, emergency patient, outpatient and newborn, which are determined by the presence of associated UB revenue codes in encounter charges.

Weekly change percentage is calculated by comparing current week patient volume with past 26 weeks rolling average volume.

Past 30 Day Change refers to the percentage difference between the sum encounter volume of the last 30 days of data, compared to the volume of the 30 days before that.

For the service line and procedure graphs: Service line and procedure groups provided by the Sg2 CARE Grouper™, based on the ICD-10 diagnosis and procedure codes, DRG codes, and CPT codes of each encounter.

For the COVID-19 summary graphs: COVID-19 infection status provided by the Sg2 CARE Grouper. Only encounters with ICD-10 diagnosis code U07.1 (indicating verified infection) are included.

GMLOS (Geometric mean length of stay) represents the nth root of the product of the LOS values for every COVID-19 inpatient admitted per day, where n is the number of patients per admit date. We chose this metric over average length of stay as it is less influenced by very high outliers.

For the payor mix analysis: the primary insurance plan is normalized by the StrataSphere machine learning payor model, encounters with a "not specified" payor are excluded.

Note: In the service line and procedure graphs observation and emergency patients are included in the outpatient volume for chart clarity.